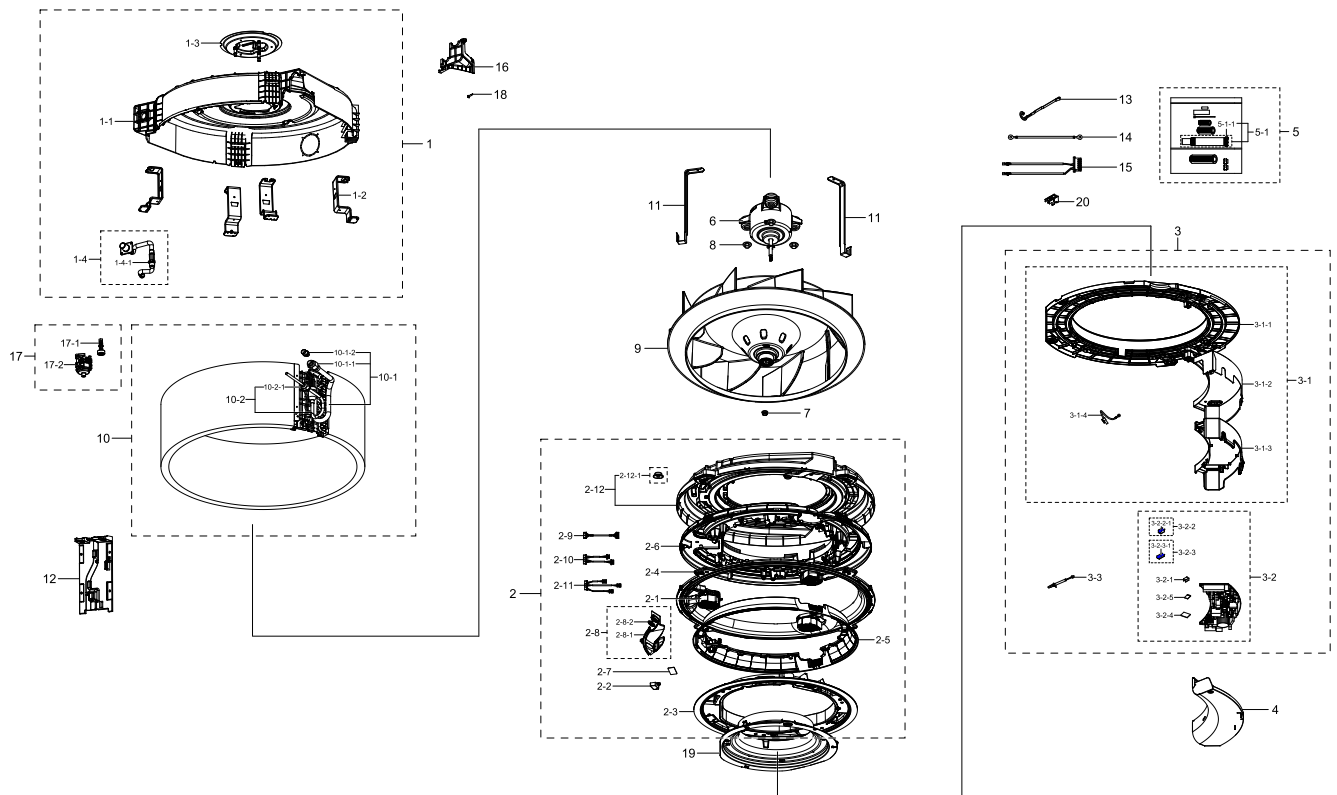


# 1. AC018KN4DCH/AA

## Exploded View



## Parts List

No.	Lvl.	Loc.	Material Code	Description & Specification	SNA	Qty.
1	2	A2676	DB90-09381A	ASSY CABI BODY; 360CST SML	SA	1
1-1	3		DB61-06571A	BODY; HIPS,T2,BLACK,S	SA	1
1-2	3	P0229	DB61-06585A	PLATE-HANGER; PLATE-HANGER,GI-SGCC,T1.6	SA	4
1-3	3	A2803	DB90-05821A	ASSY BRACKET MOTOR; Global 4W-CST	SA	1
1-4	3		DB94-06051A	ASSY HOSE DRAIN; AC145KN4PBH1	SA	1
1-4-1	4	V0020	DB62-09665A	VALVE CHECK; PPO,BLACK,1-1,8	SA	1
2	2		DB90-09387B	ASSY FRAME OUTLET; 360 CST	SA	1
2-1	3		DB31-00674A	MOTOR BLDC FAN; Booster Fan motor,2800,12	SA	3
2-2	3		DB61-06616A	CASE PCB-SUB; PC	SA	1
2-3	3		DB90-09379A	ASSY COVER-UP; 360CST	SA	1
2-4	3		DB90-09396A	ASSY FRAME OUTLET-UP; 360CST LRG	SA	1
2-5	3		DB90-09397A	ASSY COVER-OUTLET; 360CST	SA	1
2-6	3		DB90-09463A	ASSY FRAME OUTLET-LOW; 360CST	SA	1
2-7	3	A0694	DB92-02805A	ASSY PCB SUB; RECEIVER,DVM NASA_MASTER_N,	SA	1
2-8	3	A0882	DB93-15822A	ASSY DISPLAY; 360CST	SA	1

Exploded Views and Parts List

No.	Lvl.	Loc.	Material Code	Description & Specification	SNA	Qty.
2-8-1	4		DB64-03204A	WINDOW DISPLAY-B; WINDOW DISPLAY-B,PMMA,T	SA	1
2-8-2	4		DB92-03855A	ASSY PCB DISPLAY; DISPLAY PBA,AC9000K,97*	SA	1
2-9	3		DB93-06159B	ASSY CONNECTOR WIRE-DISPLAY; 10,2095,26,B	SA	1
2-10	3		DB93-16336A	ASSY CONNECTOR WIRE-DC SIGNAL; 10,2095,26	SA	1
2-11	3		DB93-15861B	ASSY CONNECTOR WIRE-DC SIGNAL; 12,2095,26	SA	1
2-12	3	A2303	DB94-06052A	ASSY TRAY DRAIN; AC145KN4PBH1	SA	1
2-12-1	4		DB73-00133B	RUBBER-CAP DRAIN SOCKET; EPDM	SA	1
3	2		DB92-04628B	ASSY KIT; INDOOR,CAC R32,CAC_360CST_MAIN	SNA	1
3-1	3		DB90-09386C	ASSY CASE CONTROL; 360CST	SA	1
3-1-1	4	C1140	DB63-03763A	COVER-BELL MOUTH; AC145KN4PBH1,HIPS,T2,HB	SA	1
3-1-2	4		DB61-06767A	PLATE CONTROL-LOW; AC145KN4PBH1,GI-SGCC,T	SNA	1
3-1-3	4		DB61-06768A	CASE CONTROL-IN; MPPE,T2.5,EBONY BLACK	SNA	1
3-1-4	4	A0646	DB93-08805B	ASSY CONNECTOR WIRE-EARTH; 1,1015,18,YEL/	SA	1
3-2	3	A2748	DB92-04034E	ASSY PCB MAIN; MAIN,CAC R32,260*108.5,220	SA	1
3-2-1	4		DB37-00026A	TERMINAL BLOCK; DAPC 3013-2P-M,MELAMINE,3	SA	1
3-2-2	4		DB94-06973A	ASSY HEAT SINK 1; MAIN,FCU,260*108.5,Y,22	SNA	1
3-2-2-1	5		0205-000178	GREASE-SILICON; YG6111,WHITE, for assembl	SA	1
3-2-3	4		DB94-06974A	ASSY HEAT SINK 5; MAIN,FCU,260*108.5,Y,22	SNA	1
3-2-3-1	5		0205-000178	GREASE-SILICON; YG6111,WHITE, for assembl	SA	1
3-2-4	4		DB92-02793A	ASSY FUNCTION; COMM,DVM NASA_CST,Y	SA	1
3-2-5	4	A0694	DB92-04020A	ASSY PCB SUB; SUB,20*25,Indoor EEPROM,Yes	SA	1
3-3	3	A3189	DB95-05009A	ASSY THERMISTOR IN-ROOM; SMH250-02L,L100,	SA	1
4	2		DB61-06766A	PLATE CONTROL-UP; AC145KN4PBH1,GI-SGCC,T0	SA	1
5	2	A0916	DB94-02739G	ASSY DRAIN-HOSE INSTALL; GLOBAL 4WAY	SA	1
5-1	3		DB94-02719B	ASSY DRAIN-HOSE; 250,NS1004PXEA,CLAMP TYP	SA	1
5-1-1	4		DB90-06130A	ASSY HOLDER-CLAMP; NS1004PXEA	SA	1
6	2		DB31-00578E	MOTOR BLOWER; FMC6531SSL,65W,DC310V,NO FE	SA	1
7	2		DB60-00406A	FASTENER-NUT FLANGE; SWRCH10A	SA	1

No.	Lvl.	Loc.	Material Code	Description & Specification	SNA	Qty.
8	2		DB60-00427A	FASTENER-NUT WASHER; FASTENER-NUT WASHER,	SA	3
9	2	A1151	DB94-03093A	ASSY FAN TURBO; NS0714DXEA	SA	1
10	2	A1062	DB96-22161B	ASSY EVAP-UNIT; AC060KN4PBH1,360CST SML 6	SA	1
10-1	3		DB96-22155B	ASSY TUBE EVAP OUT; 360CST SML 6.0kW	SA	1
10-1-1	4	N0027	DB60-30010C	FASTENER-NUT FLARE; BRASS	SA	1
10-1-2	4	C1284	DB63-00360C	COVER-FLARE; SH12ACB,PA,-,-,-,-,-,-,-,-	SNA	1
10-2	3	A2355	DB96-22158A	ASSY TUBE EVAP IN; AC072KN4PBH1	SNA	1
10-2-1	4	N0027	DB60-30010A	FASTENER-NUT FLARE; BRASS	SA	1
11	2		DB61-04518A	HOLDER-EVAP; Global 4W-CST,STS430,T0.6	SA	2
12	2		DB61-06562A	CASE-PARTITION; HIPS,T1.6,NATURAL	SA	1
13	2	S0242	DB81-00635A	SPRING ETC-SENSOR; DVM-SYSTEM,STS304,R2.5	SA	2
14	2	A0646	DB93-17152B	ASSY CONNECTOR WIRE-EARTH; 1,1015,12,YEL/	SA	1
15	2		DB32-00239A	SENSOR TEMP; SMH200-06H,L800,10kohm	SA	1
16	2		DB90-09385A	ASSY COVER-PIPE; 360CST	SA	1
17	2		DB94-06097B	ASSY TRAY DRAIN-PUMP; 360 CST	SNA	1
17-1	3		DB95-04462E	SWITCH FLOAT; 700.5mm,2.5,1600mm,SMH250	SA	1
17-2	3		DB31-00649G	PUMP DRAIN; 400,-,1200,ul3266,1600,V-0	SA	1
18	2	S0019	DB60-00150A	SCREW-SPECIAL; HWH,M4,L26,ZPC(WHT),SWRCH1	SA	2
19	2		DB90-09398B	ASSY COVER-INLET; 360CST EXP	SA	1
20	3		DB61-05788A	BRACKET-CONDUIT; G-4WAY,MINI 4WAY,SGCC-M,	SA	1