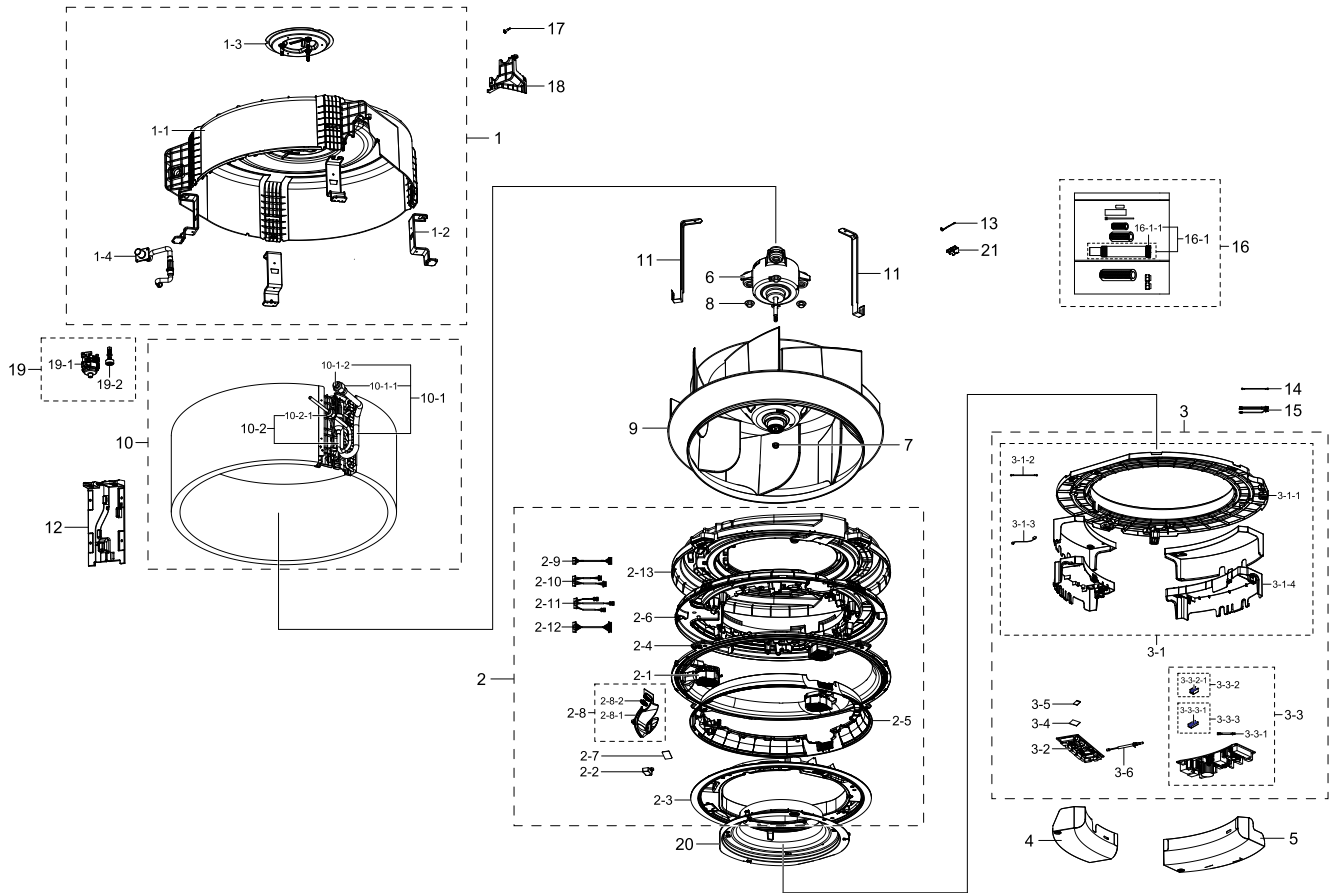


# 1. AC018KN4DCH/AA

## Exploded View



## Parts List

No.	Lvl.	Loc.	Material Code	Description & Specification	SNA	Qty.
1	2	A2676	DB90-09381A	ASSY CABI BODY; 360CST SML	SA	1
1-1	3		DB61-06571A	BODY; HIPS,T2.0,BLACK,S	SA	1
1-2	3	P0229	DB61-06585A	PLATE-HANGER; PLATE-HANGER,GI-SGCC,T1.6	SA	4
1-3	3	A2803	DB90-05821A	ASSY BRACKET MOTOR; Global 4W-CST	SA	1
1-4	3		DB94-06051A	ASSY HOSE DRAIN; AC145KN4PBH1	SA	1
2	2		DB90-09387A	ASSY FRAME OUTLET; 360CST	SA	1
2-1	3		DB31-00674A	MOTOR BLDC FAN; Booster Fan motor,2800,12	SA	3
2-2	3		DB61-06616A	CASE PCB-SUB; PC	SA	1
2-3	3		DB90-09379A	ASSY COVER-UP; 360CST	SA	1
2-4	3		DB90-09396A	ASSY FRAME OUTLET-UP; 360CST LRG	SA	1
2-5	3		DB90-09397A	ASSY COVER-OUTLET; 360CST	SA	1
2-6	3		DB90-09463A	ASSY FRAME OUTLET-LOW; 360CST	SA	1
2-7	3	A0694	DB92-02805A	ASSY PCB SUB; RECEIVER,DVM NASA_MASTER_N,	SA	1

Exploded Views and Parts List

No.	Lvl.	Loc.	Material Code	Description & Specification	SNA	Qty.
2-8	3	A0882	DB93-15822A	ASSY DISPLAY; 360CST	SA	1
2-8-1	4		DB64-03204A	WINDOW DISPLAY-B; WINDOW DISPLAY-B,PMMA,T	SA	1
2-8-2	4		DB92-03855A	ASSY PCB DISPLAY; DISPLAY PBA,AC9000K,97*	SA	1
2-9	3		DB93-06159A	ASSY CONNECTOR WIRE-DISPLAY; 10,2095,26,B	SA	1
2-10	3		DB93-15860A	ASSY CONNECTOR WIRE-DC SIGNAL; 11,2095,24	SA	1
2-11	3		DB93-15861A	ASSY CONNECTOR WIRE-DC SIGNAL; 12,2095,26	SA	1
2-12	3		DB93-15862A	ASSY CONNECTOR WIRE-DC SIGNAL; 15,2095,26	SA	1
2-13	3	A2303	DB94-06052A	ASSY TRAY DRAIN; AC145KN4PBH1	SA	1
3	2		DB92-03857C	ASSY KIT; ASSY KIT,AC9000K,360 CST,CAC AS	SNA	1
3-1	3		DB90-09386B	ASSY CASE CONTROL; 360CST NORTH AMERICA	SA	1
3-1-1	4	C1140	DB63-03763A	COVER-BELL MOUTH; AC145KN4PBH1,HIPS,T2.0,	SA	1
3-1-2	4	A0626	DB93-07990A	ASSY CONNECTOR WIRE; 1,1015,18,YEL/GRN,ST	SA	1
3-1-3	4	A0646	DB93-08805B	ASSY CONNECTOR WIRE-EARTH; 1,1015,18,YEL/	SA	1
3-1-4	4		DB90-09444B	ASSY CASE CONTROL-LOW; 360CST NORTH AMERI	SA	1
3-2	3	A2748	DB92-03856A	ASSY PCB MAIN; MAIN PBA,AC9000K,160*60.5,	SA	1
3-3	3		DB92-03854A	ASSY PCB POWER; POWER PBA,AC9000K,194*93,	SA	1
3-3-1	4		DB93-13688A	ASSY CONNECTOR WIRE-DC SIGNAL; 2,1007,24,	SA	1
3-3-2	4		DB94-06087A	ASSY HEAT SINK 1; POWER PBA,AC9000K,194*9	SNA	1
3-3-2-1	5		0205-000178	GREASE-SILICON; YG6111,WHITE, for assembl	SA	1
3-3-3	4		DB94-06088A	ASSY HEAT SINK 2; POWER PBA,AC9000K,194*9	SNA	1
3-3-3-1	5		0205-000178	GREASE-SILICON; YG6111,WHITE, for assembl	SA	1
3-4	3		DB92-02793A	ASSY FUNCTION; COMM,DVM NASA_CST,Y	SA	1
3-5	3		DB93-12483A	ASSY PCB SUB-EEPROM; SUB,DVMPPLUS4 UP,20*2	SA	1
3-6	3	A3189	DB95-05009A	ASSY THERMISTOR IN-ROOM; 10Kohm 3%,103HW	SA	1
4	2		DB90-09442A	ASSY PLATE-CONTROL; 360CST MAIN	SA	1
5	2		DB61-06591A	PLATE CONTROL-UP; AC145KN4PBH1,GI-SGCC,T0	SA	1

No.	Lvl.	Loc.	Material Code	Description & Specification	SNA	Qty.
6	2		DB31-00578D	MOTOR BLOWER; FMC6531SSK,65W,DC310V	SA	1
7	2		DB60-00406A	FASTENER-NUT FLANGE; SWRCH10A	SA	1
8	2		DB60-00427A	FASTENER-NUT WASHER; FASTENER-NUT WASHER,	SA	3
9	2	A1151	DB94-03093A	ASSY FAN TURBO; NS0714DXEA	SA	1
10	2	A1062	DB96-22161B	ASSY EVAP-UNIT; AC060KN4PBH1,360CST SML 6	SA	1
10-1	3		DB96-22155B	ASSY TUBE EVAP OUT; 360CST SML 6.0kW	SA	1
10-1-1	4		DB60-30010C	FASTENER-NUT FLARE; BRASS	SA	1
10-1-2	4		DB63-00360C	COVER-FLARE; SH12ACB,PA,1/2"	SNA	1
10-2	3	A2355	DB96-22158A	ASSY TUBE EVAP IN; AC072KN4PBH1	SNA	1
10-2-1	4		DB60-30010A	FASTENER-NUT FLARE; BRASS	SA	1
11	2		DB61-04518A	HOLDER-EVAP; Global 4W-CST,STS430,T0.6	SA	2
12	2		DB61-06562A	CASE-PARTITION; HIPS,T1.6,NATURAL	SA	1
13	2	S0242	DB81-00635A	SPRING ETC-SENSOR; DVM-SYSTEM,STS304,R2.5	SA	2
14	2	A0626	DB93-07990A	ASSY CONNECTOR WIRE; 1,1015,18,YEL/GRN,ST	SA	1
15	2		DB95-05011D	ASSY THERMISTOR IN; 10Kohm 3%,103HW,7P,4	SA	1
16	2	A0916	DB94-02739G	ASSY DRAIN-HOSE INSTALL; GLOBAL 4WAY	SA	1
16-1	3		DB94-02719B	ASSY DRAIN-HOSE; 250,NS1004PXEA,CLAMP TYP	SA	1
16-1-1	4		DB90-06130A	ASSY HOLDER-CLAMP; NS1004PXEA	SA	1
17	2		DB60-00150A	SCREW-SPECIAL; HWH,M4,L26,ZPC(WHT),SWRCH1	SA	2
18	2		DB90-09385A	ASSY COVER-PIPE; 360CST	SA	1
19	2		DB94-06097A	ASSY TRAY DRAIN-PUMP; AC145KN4PBH1	SNA	1
19-1	3		DB31-00649B	PUMP DRAIN; 400,PBT,1200,UL224,550,PVC,VW	SA	1
19-2	3		DB95-04462B	SWITCH FLOAT; 700.5mm,2.5,1200mm,SMH250	SA	1
20	2		DB90-09398B	ASSY COVER-INLET; 360CST EXP	SA	1
21	3		DB61-05788A	BRACKET-CONDUIT; G-4WAY,MINI 4WAY,SGCC-M,	SA	1