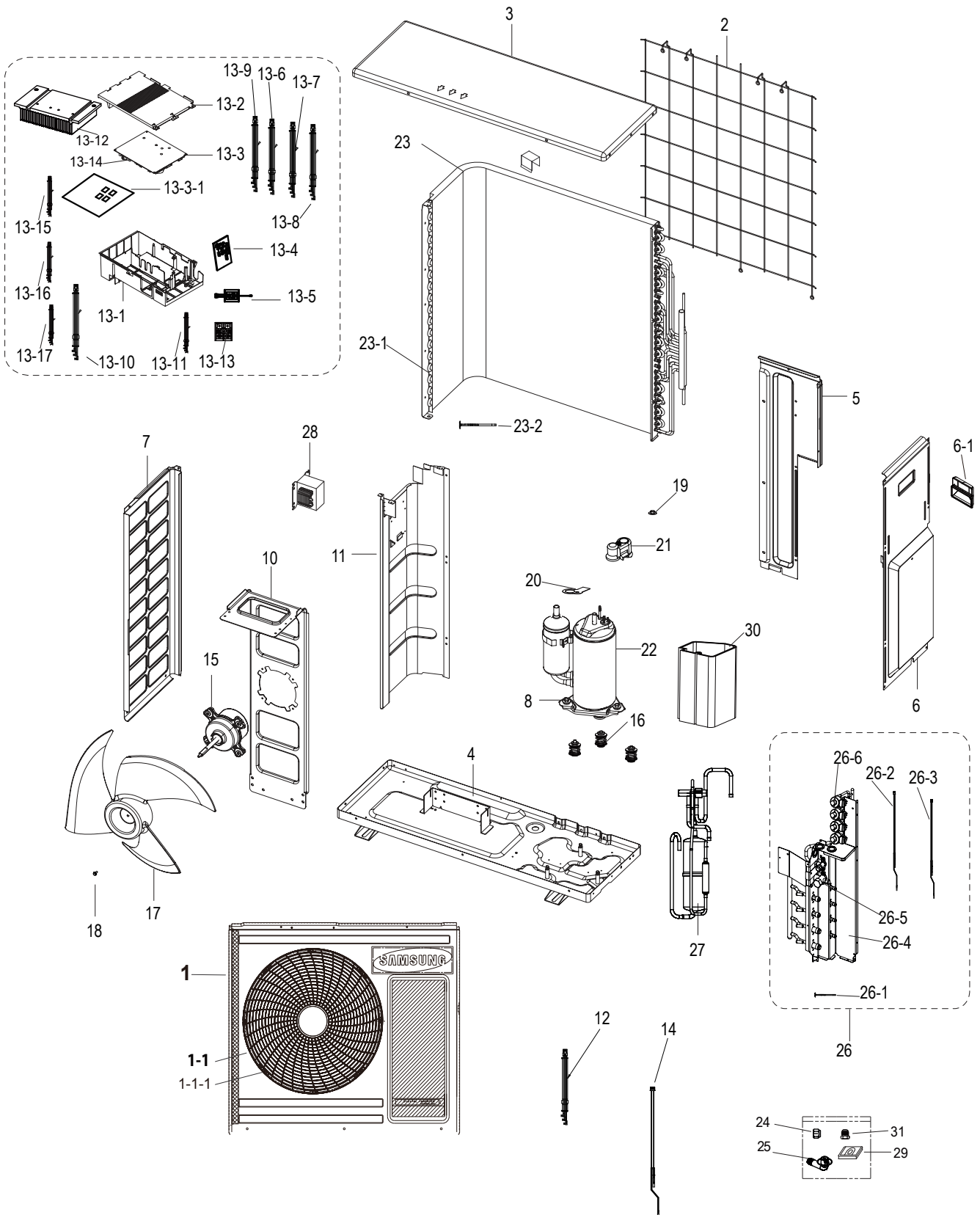


Outdoor Unit

AJ070MCJ4EH/EU



■ Part List: AJ070MCJ4EH/EU

No.	Code No.	Description	Specification	Q'ty	SA/SNA
1	DB90-07186N	ASSY CABI FRONT	AQV24EWDX,SSEC	1	SA
1-1	DB90-07157A	ASSY-GUARD FAN	XSA HI-EER,SSEC	1	SC
1-1-1	DB63-03658A	GUARD FAN	PP,EARTH BROWN	1	SA
2	DB63-03325A	GUARD COND	MH080,HSWR	1	SA
3	DB90-07183J	ASSY CABINET-UP	MH080FXEA4A,SSEC	1	SA
4	DB90-07134C	ASSY BASE OUT-TOTAL	MH080FXA4A,FAC,SSEC	1	SA
5	DB90-07281C	ASSY CABI BACK-RIGHT	AJ068MCJ3EH/EU,P	1	SA
6	DB90-07282E	ASSY CABI SIDE-RH	AJ068MCJ3EH/EU,P	1	SA
6-1	DB64-01231C	HANDLE	ABS,V0,EARTH BROWN	1	SA
7	DB90-07136C	ASSY CABINET-SIDE LF PAINT	AQ25VBFXHAC,A	1	SA
8	DB60-30028A	NUT-FLANGE	HWH,M8,ZPC(WHT),SWRCH18A,P1.2	3	SA
9	DB82-03776A	A/S ASSY-EEPROM OUT	AJ070MCJ4EH,EU,PF3_1	0	SA
10	DB90-04194D	ASSY BRACKET MOTOR	KFRD-72W/MSD,FAC,SSEC	1	SA
11	DB94-03130A	ASSY PARTITION	RJ080F4HXEA	1	SA
12	DB95-05268A	ASSY THERMISTOR OUT	103FW,6P,450/600/800	1	SA
13-1	DB61-05917A	CASE CONTROL	ABS,GRAY,VE-0858	1	SA
13-2	DB61-04910A	CASE CONTROL-UPPER	Q CHASSIS,ABS,DARK GR	1	SA
13-3	DB92-02867V	ASSY PCB INVERTER	OUTDOOR,17Y FJM CIS,24	1	SA
13-3-1	3501-001268	RELAY-POWER	12V,0.9W,25000mA,1FormA,20ms	1	SA
13-4	DB92-04176A	ASSY PCB SUB	SUB,FJM_HUB,73*80,N,12V,5V,	1	SA
13-5	DB93-14285A	ASSY CONNECTOR WIRE-COMM	2,1007,22,RED,Y	1	SA
13-6	DB93-10821C	ASSY CONNECTOR WIRE-4WAY CONNECT	2,1015,	1	SA
13-7	DB93-09495N	ASSY CONNECTOR WIRE	2,1015,14,BRN,175022	1	SA
13-8	DB93-10988E	ASSY CONNECTOR WIRE	3,1015,14,RED,MG6250	1	SA
13-9	DB93-14275A	ASSY CONNECTOR WIRE-POWER	2,1015,22,BRN,	1	SA
13-10	DB93-12121B	ASSY CONNECTOR WIRE-EARTH WIRE	1,1015,18	1	SA
13-11	DB93-14276A	ASSY CONNECTOR WIRE-DC SIGNAL	3,1007,22,	1	SA
13-12	DB62-10653A	HEAT SINK	FJM2 PF3 MODEL,AI,SCREW,32PIN	1	SA
13-13	DB65-00061G	TERMINAL BLOCK	HB-P/J,PBT,Max2.5MM*2,36.	1	SA
13-14	DB92-02862A	ASSY MODULE	STD #4 SMPS,A3050,16W (5V 28	1	SA
13-15	DB93-14277A	ASSY CONNECTOR WIRE-DC SIGNAL	3,1007,22,	1	SA
13-16	DB93-14543A	ASSY CONNECTOR WIRE-DC SIGNAL	5,1007,26,	1	SA
13-17	DB93-15320A	ASSY CONNECTOR WIRE-REACTOR	2,1015,16,WH	1	SA
14	DB93-11244E	ASSY CONNECTOR WIRE	3,3343,14,YEL,MG6108	1	SA
15	DB31-00512F	MOTOR FAN	FMBC531SSK,124[W],1050RPM,DC31	1	SA
16	DB63-02297A	GROMMET ISOLATOR	48F,NR,L32.5,ID11.5,OD2	3	SA
17	DB67-00861A	FAN PROPELLER	-,SAN+GF20%,OD460,-,T3.5,-	1	SA
18	DB60-00437A	FASTENER-NUT FLANGE	SWRCH10A,14,1.2,6	1	SA
19	6021-001142	NUT-HEXAGON FLANGE	M5,ZPC(WHT),SWRCH10A,	1	SA
20	DB63-01416C	GASKET	A/C model,SIR,T1.2,25.0,L55,A/C m	1	SA
21	DB63-02312A	COVER TERMINAL	39F,44F,48F,SABICN1250,2.	1	SA
22	G8T260FUA EW	RCP,COMP,CPR,,R410A	ROTARY	1	SA
23	DB96-09223A	ASSY COND	MH080FXEA4B,FJM SSEC	1	SA
23-1	DB96-09222A	ASSY COND SUB	MH080FXEA4B,FJM SSEC	1	SA
23-2	DB81-00635A	SPRING ETC-SENSOR	DVM-SYSTEM,STS304,R2.5	2	SA
24	DB60-30010B	FASTENER-NUT FLARE	BRASS	2	SA
25	DB67-00477A	DRAIN-PLUG OUT	UH140GZMC,PP,WHITE,SSEC	1	SA
26	DB96-23304A	ASSY VALVE	HP,AJ080MCJ4EH/EU,PMA	1	SA
26-1	DB81-00635A	SPRING ETC-SENSOR	DVM-SYSTEM,STS304,R2.5	8	SA
26-2	DB95-04653B	ASSY THERMISTOR OUT-SUB IN	RJ080F4HXEA,S	1	SA
26-3	DB95-04654B	ASSY THERMISTOR OUT-SUB OUT	RJ080F4HXEA,	1	SA
26-4	DB90-07120E	ASSY BRACKET-VALVE PAINT	RJ060F3HXEA,FJM	1	SNA
26-5	DB62-09660A	VALVE SERVICE-SPINDLE	.,5/8",R410A, FLAR	1	SA
26-6	DB62-12124A	VALVE EXPAN	1.65,500	1	SA
27	DB96-15674B	ASSY VALVE-4WAY	HP,AJ080MCJ4EH/EU,PMA	1	SA
28	DB27-00043C	COIL HARMONIC	5mH,124.5*85.8*73,20A,Scre	1	SA
29	DB73-20134A	RUBBER-LEG	V2-MD,NR,55	4	SA
30	DB63-02029A	FELT-COMP SOUND A	MH040,FELT/PVC,T5+T1.6	1	SC
31	DB67-00789A	NIPPLE-CONNECTOR	MH080FXEA4A,C3771,L41,C	2	SNA