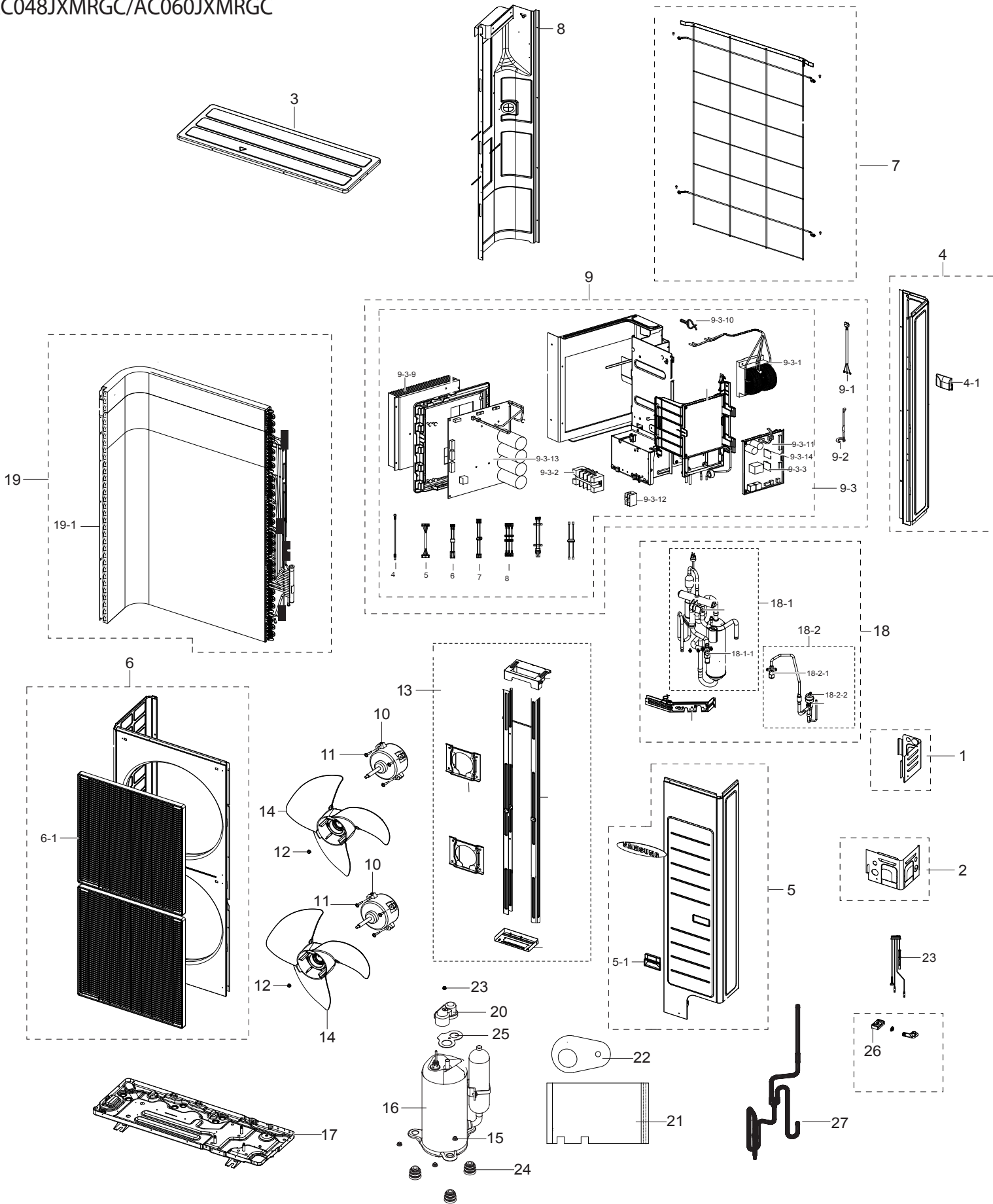


Outdoor Unit

AC048JXMRGC/AC060JXMRGC



■ Parts List

AC060JXMRGC

NO.	Parts Code	Description	Spec.	Unit	QTY	SA/SNA
1	DB64-03051A	CABINET-INSTALL BACK PAINT	DVMS ECO,EGI-	1	PC	SA
2	DB64-03050A	CABINET-INSTALL FRONT PAINT	DVMS ECO,EGI	1	PC	SA
3	DB90-07810A	ASSY CABI TOP	DVMS ECO,SSEC	1	PC	SA
4	DB90-08589A	ASSY CABI BACK-RIGHT	UB3,SSEC	1	PC	SA
4-1	DB64-02613B	HOLDER-UP	RC140PHXEA,PP,T2.5,EARTH BROWN,HE	1	PC	SA
5	DB90-07807E	ASSY CABI FRONT-RH	DVMS ECO,SSEC	1	PC	SA
5-1	DB64-02613B	HOLDER-UP	RC140PHXEA,PP,T2.5,EARTH BROWN,HE	1	PC	SA
6	DB90-07808B	ASSY CABI FRONT-LEFT	DVMS ECO,SSEC	1	PC	SA
6-1	DB63-02728B	GUARD-FAN	RC140PHXEA,PP,EARTH BROWN	2	PC	SA
7	DB90-09951A	ASSY GUARD-COND	UB3,SSEC	1	PC	SA
8	DB94-05126D	ASSY PARTITION	UB3,SSEC	1	PC	SA
9-1	DB93-08235H	ASSY CONNECTOR WIRE-COMP	3,3343,14,YEL,H	1	PC	SA
9-2	DB95-04871E	ASSY THERMISTOR OUT-SUB OUT	UB3 CHASSIS,	1	PC	SA
9-3	DB92-03768A	ASSY PBA KIT-OUT MODULE	OUTDOOR,BIG DUCT,16KW 3 phase	1	PC	SNA
9-3-1	DB27-00100A	COIL HARMONIC	5mH,76.8*75.2	1	PC	SA
9-3-2	DB65-00185C	TERMINAL BLOCK	CAC INVERTER,DATB-S,600V,	1	PC	SA
9-3-3	DB93-12483A	ASSY PCB SUB-EEPROM	SUB,DVMPPLUS4 UP,20*2	1	PC	SA
9-3-5	DB93-10807A	ASSY CONNECTOR WIRE-MAIN TO INVERTER COM		1	PC	SA
9-3-6	DB93-10808J	ASSY CONNECTOR WIRE-COMM	2,1015,22,RED,Y	1	PC	SA
9-3-7	DB93-10811A	ASSY CONNECTOR WIRE-EMI TO TERMINAL POWE	2	1	PC	SA
9-3-8	DB93-10864B	ASSY CONNECTOR WIRE-POWER RST	3,1015,14,	1	PC	SA
9-3-9	DB62-10902C	HEAT SINK-3PHASE	AL,10,200,200,PLATFORM	1	PC	SA
9-3-10	DB93-11114C	ASSY PCB MAIN-INVERTER	INVERTER,RC100DHX	1	PC	SA
9-3-11	DB92-03310A	ASSY PCB MAIN	OUTDOOR MAIN,CPAC NASA,192	1	PC	SA
9-3-12	DB65-00274A	TERMINAL BLOCK	TERMINAL BLOCK,B_Type	1	PC	SA
9-3-13	DB92-03542A	ASSY PCB SUB	SUB,GLOBAL 4WAY,230X130,380	1	PC	SA
9-3-14	DB82-02935A	A/S ASSY-EEPROM-OUT	AC048JXMREC/ID,UAE,3	1	PC	SA
10	DB31-00579A	MOTOR FAN	125W,DC310V,CLASS E	2	PC	SA
11	DB60-00150A	SCREW-SPECIAL	HWH,M4,L26,ZPC(WHT),SWRCH18A	8	PC	SNA
12	6021-001142	NUT-HEXAGON FLANGE	HEX-PLANGE,M8,ZPC(WHT)	2	PC	SA
13	DB90-07811A	ASSY BRACKET MOTOR	DVMS ECO,SSEC	1	PC	SA
14	DB94-04381A	ASSY FAN PROPELLER	DVM S ECO,520	2	PC	SA
15	DB60-30028A	NUT-FLANGE	HWH,M8,ZPC(WHT),SWRCH18A,P1.2	3	PC	SA
16	UG5T450FXAJX	RCP,55.F,R410A		1	PC	SA

NO.	Parts Code	Description	Spec.	Unit	QTY	SA/SNA
17	DB90-07806D	ASSY BASE OUT	AC072JXMRCC/ID,UB3,PFC	1	PC	SA
18	DB96-21515A	ASSY TUBE-VALVE	AC060JXADKC/VN,ASSY	1	PC	SA
18-1	DB96-21512A	ASSY TUBE SUCTION	AC060JXADKC/VN,ASSY	1	PC	SA
18-1-1	DB62-09654A	VALVE SERVICE-SPINDLE	„3/4" R410a,FLARE	1	PC	SA
18-2	DB96-21226A	ASSY TUBE EEV	AC072JXQRGC/ID,UB3,PFC	1	PC	SA
18-2-1	DB62-09654A	VALVE SERVICE-SPINDLE	FLARE,R410A,9.52	1	PC	SA
18-2-2	DB62-11206A	VALVE COIL EXPAN	DC12V,COIL,1000,18.95,M	1	PC	SA
19	DB96-21535A	ASSY COND-MODULE	AC060JXADKC/VN,PFC	1	PC	SA
19-1	DB96-21536A	ASSY COND SUB-UNIT	AC060JXADKC/VN,UB3 PF	1	PC	SA
20	DB63-02280A	COVER TERMINAL	39F,44F,48F,SABICN1250,2.	1	PC	SA
21	DB63-03389A	FELT-COMP SIDE	FELT,8,665,400,PET	1	PC	SA
22	DB63-03390A	FELT-COMP TOP IN	FELT,8,274,168	1	PC	SNA
23	6021-001142	NUT-HEXAGON FLANGE	M5,ZPC(WHT),SWRCH10A,	1	PC	SA
24	DB63-02251A	GROMMET ISOLATOR	SI	3	PC	SA
25	DB63-02281B	GASKET	A/C model,SIR,T1.2,25.0,L55,A/C m	1	PC	SA
26	DB73-20134A	RUBBER-LEG	V2-MD,NR,55	4	PC	SA
27	DB96-21533B	ASSY TUBE DISCHARGE	48K,SSEC UAE C/O	1	PC	SA