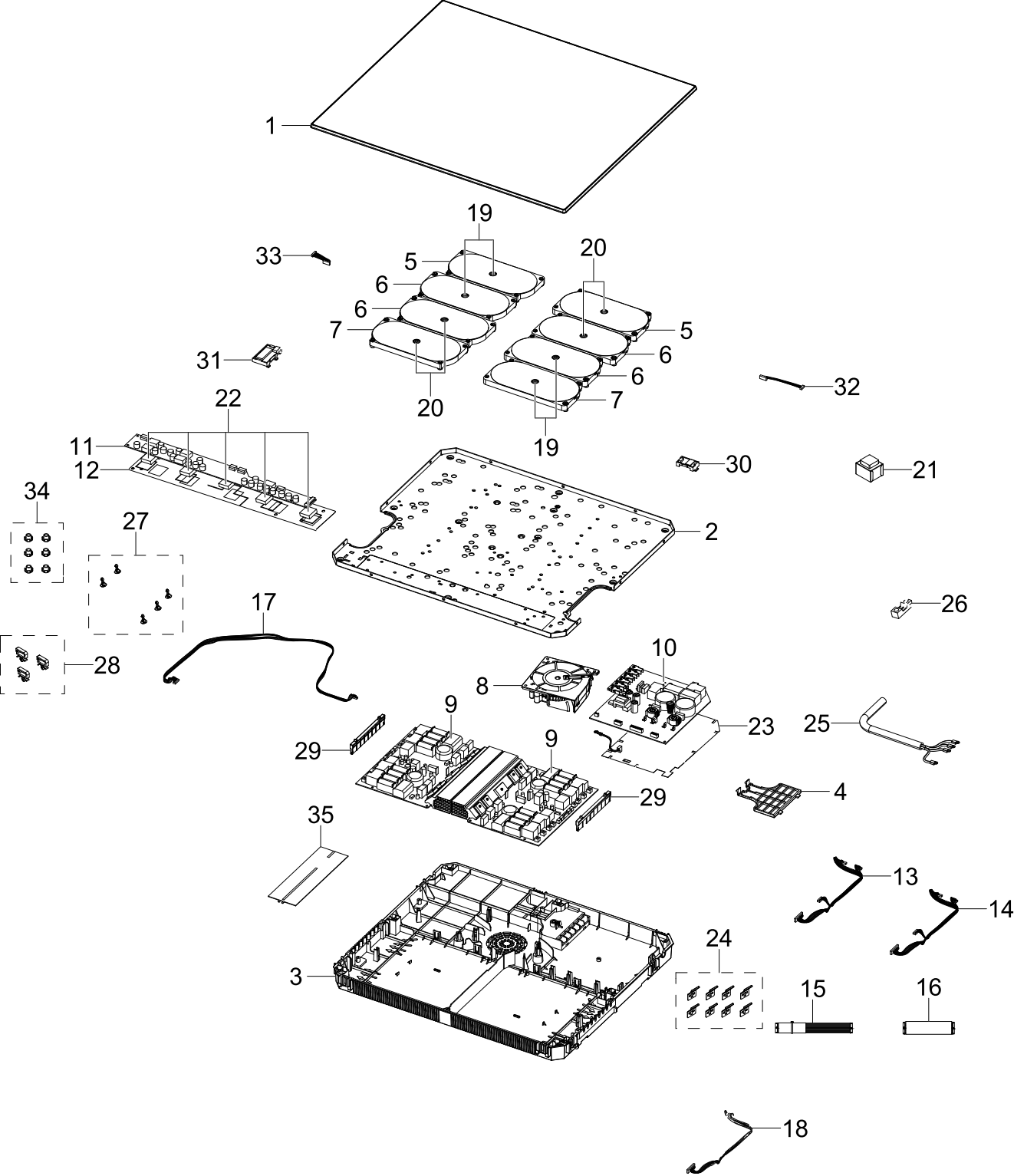


# 1. NZ64R9787GK/EC

NZ64R9787GK/EC

## Exploded View



## Parts List

No.	Lvl.	Loc.	Material Code	Description & Specification	SNA	Qty.
1	1		DG82-01291A	SVC ASSY-GLASS TOP PLATE; NZ64R9787GK/EO,	SA	1
2	1		DG81-03167A	SVC-BRACKET SHIELD; NZ63T8708XW,122660000	SA	1
3	1		DG81-03168A	SVC-CASE BOTTOM; NZ63T8708XW,121660000076	SA	1
4	1		DG81-03169A	SVC-COVER TERMINAL BLOCK; NZ63T8708XW,121	SA	1
5	1		DG81-03352A	SVC-WORKING COIL 195MM; NZ64T9787TG,17466	SA	2
6	1		DG81-03353A	SVC-WORKING COIL 195MM; NZ64T9787TG,17466	SA	4
7	1		DG81-03354A	SVC-WORKING COIL 195MM; NZ64T9787TG,17400	SA	2
8	1		DG81-03166A	SVC MOTOR-COOLING; NZ63T8708XW,1746600000	SA	1
9	1		DG82-01147A	SVC ASSY PBA-INVERTER PBA; NZ64T9787TG,17	SA	2
10	1		DG82-01139A	SVC ASSY PBA-FILTER PBA WITH EARTH WIRE;	SA	1
11	1		DG82-01149A	SVC ASSY PBA-TOUCH DISPLAY PBA; NZ64T9787	SA	1
12	1		DG81-03174A	SVC-MICA SHEET_DISPLAY; NZ63T8708XW,12766	SA	1
13	1		DG81-03181A	SVC-ASSY WIRE HARNESS-DC SIGNAL; NZ63T870	SA	1
14	1		DG81-03351A	SVC-WIRE HARNESS DC SIGNAL; NZ63T6777MR,1	SA	1
15	1		DG81-03180A	SVC-ASSY WIRE HARNESS-DC SIGNAL(HASS); NZ	SA	1
16	1		DG81-03179A	SVC-ASSY WIRE HARNESS-DC SIGNAL; NZ63T870	SA	1
17	1		DG81-03342A	SVC-ASSY WIRE HARNESS-POWER; NZ63J9770EK/	SA	2
18	1		DG81-03341A	SVC-ASSY WIRE HARNESS-POWER; NZ63J9770EK/	SA	2
19	1		DG81-03355A	SVC-TOP SENSOR (FLEX); NZ64T9787TG,174660	SA	4
20	1		DG81-03356A	SVC-TOP SENSOR (FLEX); NZ64T9787TG,174660	SA	4
21	1		DG82-01142A	SVC ASSY-RELAY CASE ASSY; NZ63J9770EK/EG,	SA	1
22	1		DG81-03170A	SVC-CUSHION RELAY CASE; NZ63T8708XW,12466	SA	5
23	1		DG81-03185A	SVC-MICA SHEET POWER PBA; NZ63T8708XW,127	SA	1

No.	Lvl.	Loc.	Material Code	Description & Specification	SNA	Qty.
24	1		DG81-03212A	SVC-INSTALLATION BKT; NZ63T8708XW,1296600	SA	8
25	1		DG81-03327A	SVC POWER CORD; NZ63J9770EK/EG,1746600000	SA	1
26	1		DG81-02879A	SVC-WIRE FASTENER; NZ64R3747RK/UR,1216600	SA	1
27	1		DG81-02963A	A/S-ISOLATED COLUMN; NZ64T3707AK,12166000	SA	5
28	1		DG81-03347A	SVC-WIRE CLIP; NZ64K5747BK/EU,12166000000	SA	3
29	1		DG81-03332A	SVC-CASE BOTTOM BRACKET; NZ63J9770EK/EG,1	SA	2
30	1		DG82-01077A	SVC ASSY PBA-BLUETOOTH; NZ63T8708XW,17166	SA	1
31	1		DG82-01078A	SVC ASSY PBA-WI-FI; NZ63T8708XW,171660000	SA	1
32	1		DG81-03176A	SVC-WIRE HARNESS-DC SIGNAL (BT); NZ63T870	SA	1
33	1		DG81-03175A	SVC-WIRE HARNESS-DC SIGNAL (WI-FI); NZ63T	SA	1
34	1		DG81-03348A	SVC-LAMP COVER; NZ63T6777MR,1266600000105	SA	6
35	1		DG81-03359A	SVC-MICA SHEET; NZ64T5747EK/SA,1276600000	SA	1