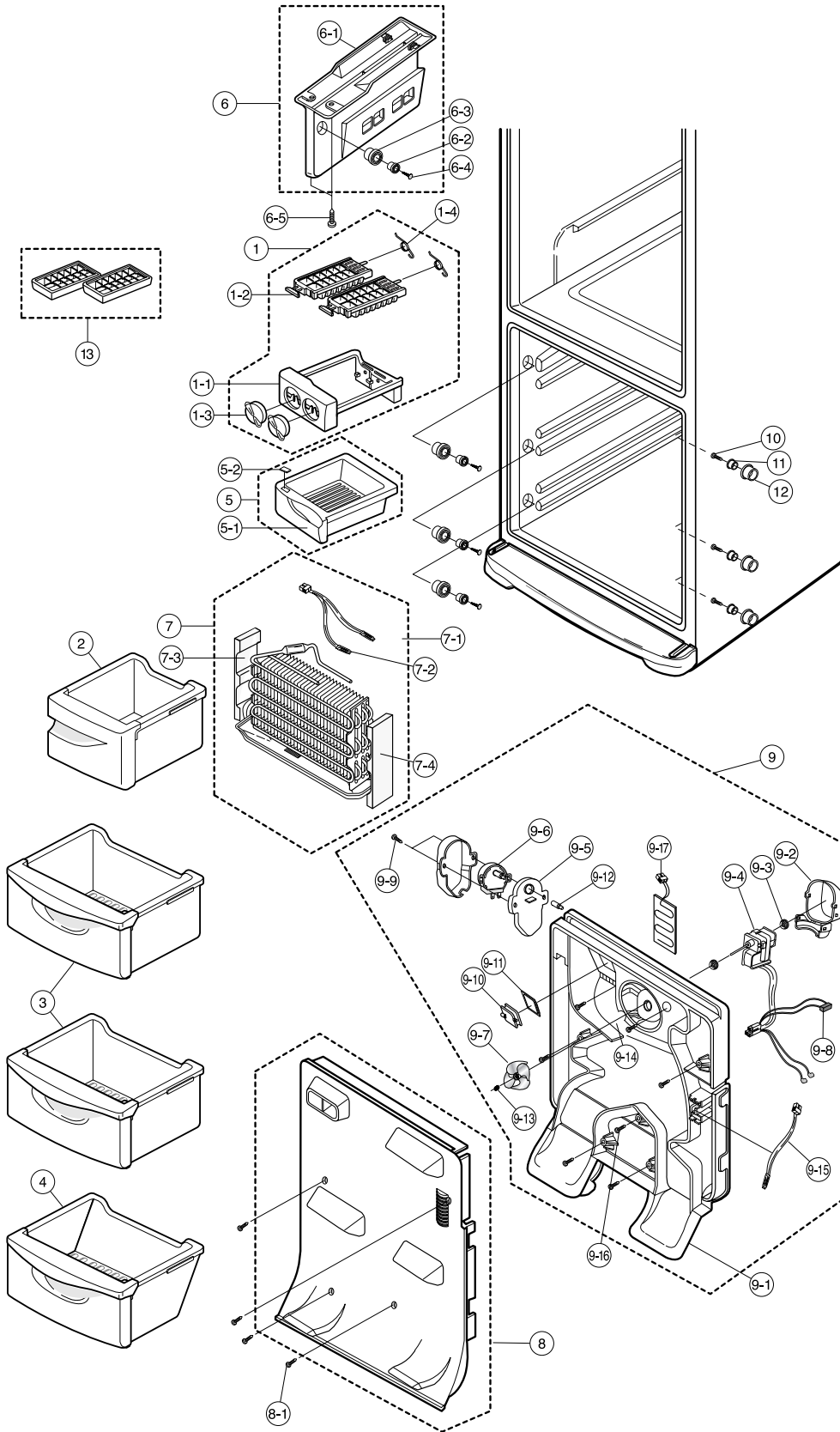


10. Parts List

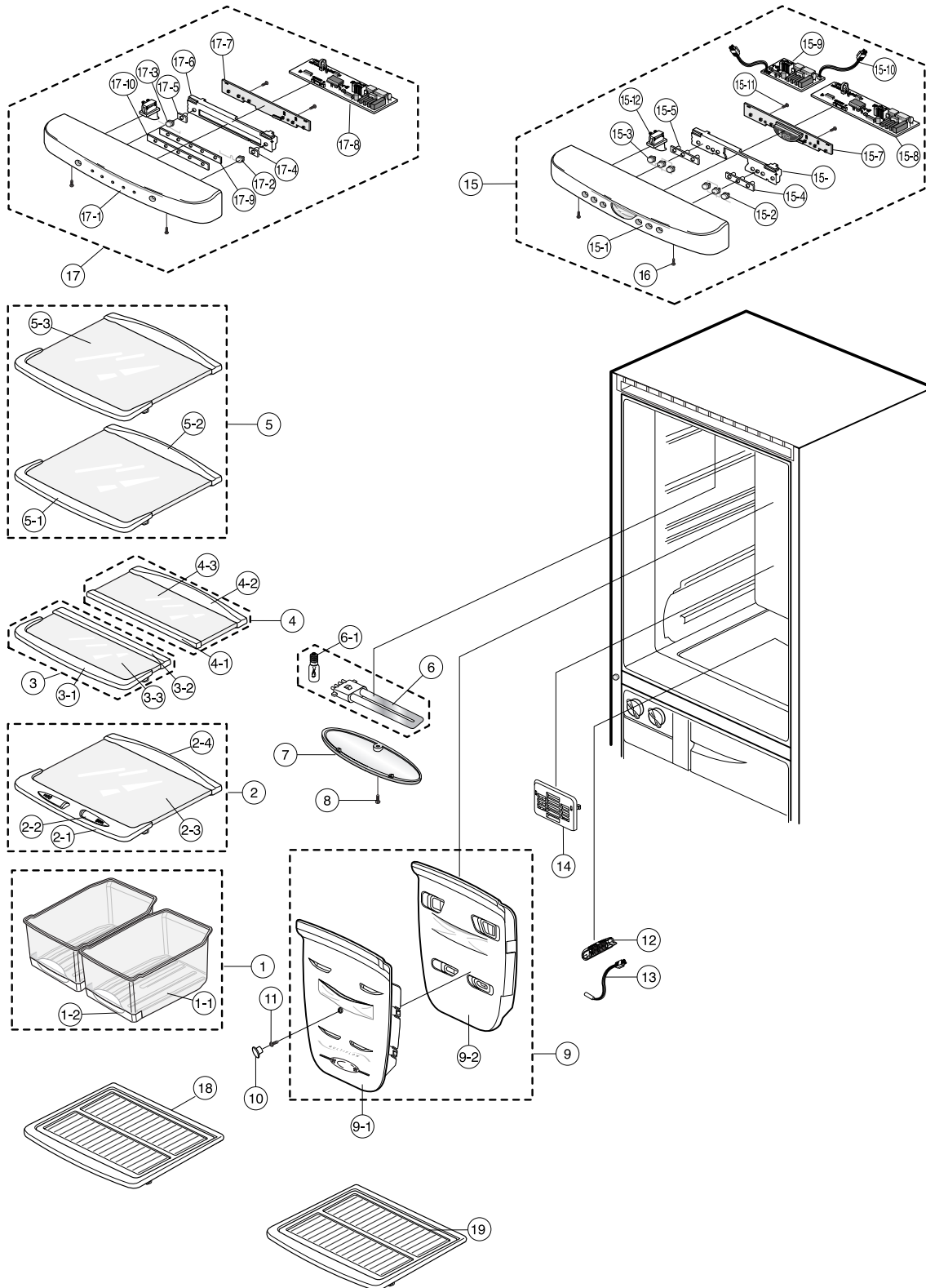
10-1. Freezer Compartment



■ Freezer List

NO	CODE-NO	ITEM	SPECIFICATION	Q'TY	REMARK
1	DA66-00087A	TRAY ICE-ASSY	HIPS,SRL36,L39	1	
1-1	DA71-00108A	FIXER-TRAY ICE	HIPS,W9540,SRL36,L39	1	
1-2	DA66-00071A	TRAY-ICE	SRL36,L39,W9540	2	
1-3	DA64-00158A	KNOB-TRAY ICE	HIPS,W9540,SRL36,L39	2	
1-4	DA61-20136A	SPRING-ICE MAKER	STS304,ID1.0,PI10.5,SR-53E	2	
2	DA66-00086A	TRAY FRE-C-ASSY	SRL36,L39	1	
3	DA66-00091A	TRAY FRE-A-ASSY	WHT	2	
	DA66-00091B	TRAY FRE-A-ASSY	TRANSE PARENT	1	
4	DA66-00092A	TRAY FRE-B-ASSY	WHT	1	
	DA66-00092B	TRAY FRE-B-ASSY	TRANSE PARENT		
	DA66-00101A	TRAY-ICE,CUBE, ASSY	SRL36,L39	1	
5-1	DA66-00056A	TRAY-ICE,CUBE	SRL36,L39	1	
5-2	DA67-00302A	CAP-TRAY-ICE,CLUB		1	
6	DA61-00137A	SUPPORT-RAIL ASSY	HIPS,WHT,SRL36,L39	1	
6-1	DA61-00082A	SUPT-RAIL	HIPS,SRL36,L39,WHT	1	
6-2	DA66-00052A	ROLLER-FRE-A	POM,SRL36,L39	1	
6-3	DA66-00053A	ROLLER-FRE-B	POM,SRL36,L39	1	
6-4	6002-000215	SCREW-TAPPING	TH-1S,M4XL16,ZPC(YEL),MSWR1	1	
6-5	6002-000213	SCREW-TAPPING	TH,M4,L12,ZPC(YEL),SWRCH18	2	
7	DA96-00015A	EVAP ASSY	SRL36,L39,FIN,A1100P-H24,240V,310W	1	
	DA96-00015B	EVAP ASSY	SRL36,L39,FIN,A1100P-H24,220V,310W	1	
	DA96-00024A	EVAP ASSY	SRL36,L39,FIN,A1100P-H24,127V,310W	1	
7-1	DA32-10105Q	SENSOR ASSY	502AT,COMBI-PJT,300,YELLOW,F-DEF-SENSOR	1	
7-2	DA47-10162F	THERMO FUSE	250V,10A,72	1	
7-3	DA60-00053A	SPACER-EVAP,L	127V EVAP ASSY	1	
7-4	DA60-00054A	SPACER-EVAP,I	127V EVAP ASSY	1	
8	DA63-00395E	COVER-EVAP FRONT-ASSY	TWIST,PP	1	
	DA63-00395F	COVER-EVAP FRONT-ASSY	NORMAL,PP	1	
8-1	6002-000215	SCREW-TAPPING	TH,1,M4.0,L16,ZPC(YEL),MSWR1	4	
9	DA63-00396R	COVER EVAP REAR-ASSY	240V/50Hz	1	
	DA63-00396S	COVER EVAP REAR-ASSY	220V/50,60Hz	1	
	DA97-00150A	COVER EVAP REAR-ASSY	127V/60Hz	1	
9-1	DA63-00237A	COVER-EVAP REAR	PP,NTR,SRL36,L39,T1.5	1	
9-2	DA61-00081A	CASE-MOTOR	PP,SRL36,L39,NTR	1	
9-3	DA63-40119A	GROMMET-MOTOR	NBR,BLK	2	
9-4	DA31-00002P	MOTOR-FAN	240V/50Hz, 2550 rpm	1	
	DA31-00002U	MOTOR-FAN	220V/50Hz, 2550 rpm	1	
	DA31-00002X	MOTOR-FAN	127V/60Hz, 2550 rpm	1	
9-5	DA61-00117A	CASE-G-MOTOR	PP,SRL36,L39,NTR	1	
9-6	DA31-10107C	MOTOR-GEARD	M2LA49Z,220V,SR-41~518	1	
	DA31-10107B	MOTOR-GEARD	M2BC59ZR12,110V	1	
9-7	DA31-00019A	FAN-PROPELLER	SRL36,L39,NTR	1	
9-8	DA34-10125B	SWITCH SENSITIVE	5V,Black	1	
9-9	6002-000467	SCREW	PH-2S 4X10 YEL	2	
9-10	DA31-00026A	BLADE	PC,NTR,SRL36,L39	1	
9-11	DA63-00359A	GASKET-BLADE	SILICON	1	
9-12	DA66-00095A	SHAFT-BLADE ASSY	POM,SRL36,L39	1	
9-13	DA61-20128A	SPRING-FAN	STS27,ID1.0	1	
9-14	6002-000215	SCREW-TAPPING	TH,1,M4.0,L16,ZPC(YEL),MSWR1	2	
9-15	DA32-10109P	SENSOR-ASSY	502AT	1	
9-16	6006-001083	SCREW ASSY TAPP	TH,M4,L16,ZPC(YEL),SWRCH18	1	
9-17	DA47-00056A	HEATER-EVAP COVER,RE	240V	1	
	DA47-00056B	HEATER-EVAP COVER,RE	220V	1	
	DA47-00056C	HEATER-EVAP COVER,RE	127V	1	
10	6002-000215	SCREW-TAPPING	TH,1,M4.0,L16,ZPC(YEL),MSWR1	6	
11	DA66-00052A	ROLLER-FRE-A	POM	6	
12	DA66-00053A	ROLLER-FRE-B	POM	6	
13	DA67-40146B	TRAY ICE	PE, NTR, SR-1500	2	

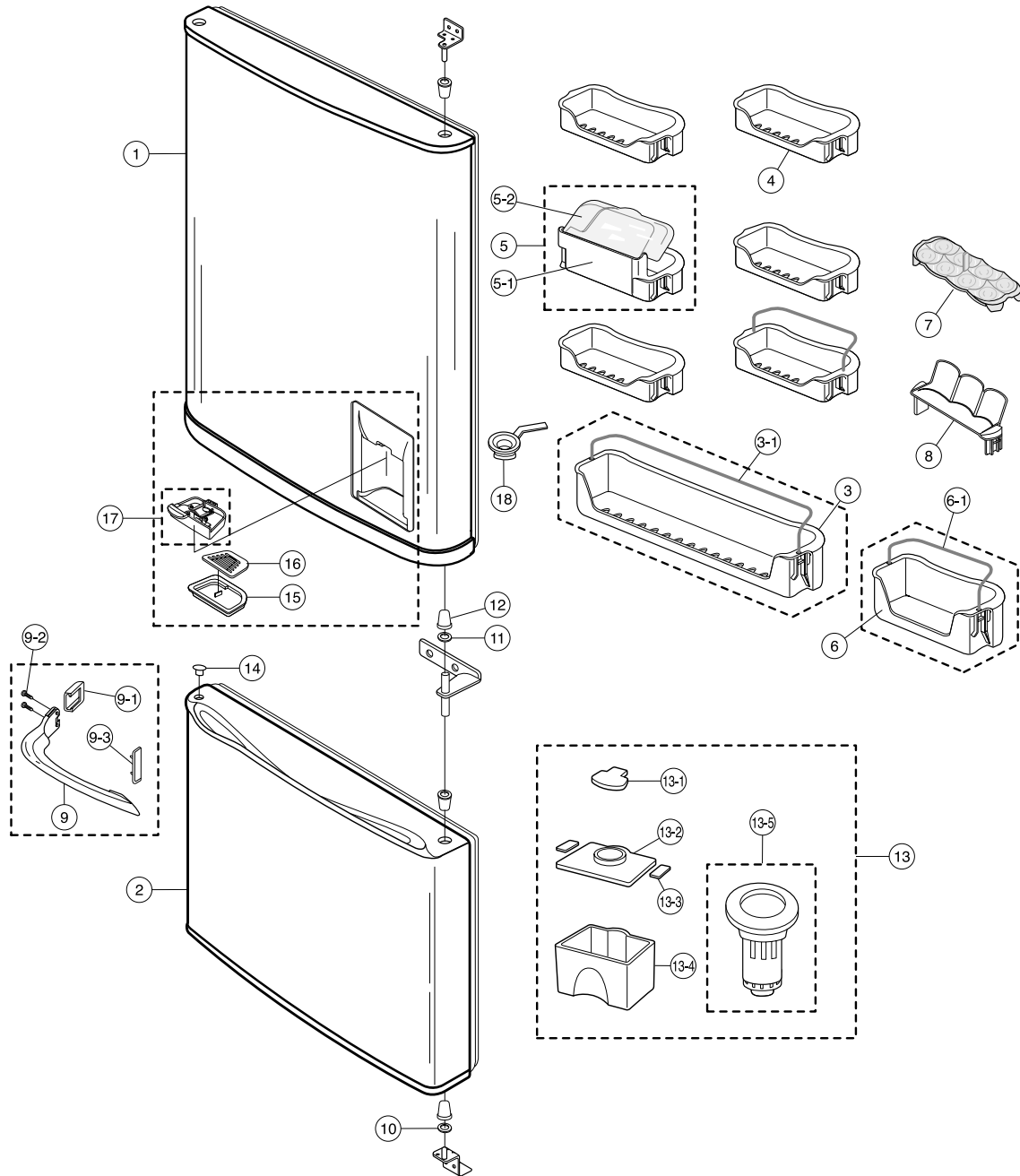
10-2. Refrigerator Compartment



■ Refrigerator List

NO	CODE-NO	ITEM	SPECIFICATION	Q'TY	REMARK
1	DA61-00126B	BOX-VEG ASS,Y		2	
1-1	DA69-00102B	BOX-VEG	GPPS	2	
1-2	DA67-00203A	CAP-VEG	HIPS	2	
2	DA67-00272A	SHELF-VEG ASSY	GLESS	1	
2-1	DA64-00119A	TRIM-SHELF-FRONT, LOW	PP,W9540	1	
2-2	DA66-00061A	LEVER-HUMIDITY	PP,WHT	2	
2-3	DA67-20346K	SHELF GALSS	GLASS,T4	1	
2-4	DA64-00116A	TRIM-SHELF REAR-A	P.P,BJ-730T4	1	
3	DA67-00268A	SHELF REF-B-ASSY	GLASS,,T4	1	
3-1	DA64-00114A	TRIM-SHELF REF-FRONT	P.P,BJ-730T4	1	
3-2	DA64-00115A	TRIM-SHELF REAR-B	PP,W9540	1	
3-3	DA67-20346J	SHELF GALSS	GLASS,T4	1	
4	DA67-00270A	SHELF REF-C-ASSY	GLESS	1	
4-1	DA64-00115A	TRIM-SHELF REAR-B	P.P,W9540	1	
4-2	DA64-00116A	TRIM-SHELF REAR-A	P.P,BJ-730T4	1	
4-3	DA67-20346J	SHELF GALSS	GLASS,T4	1	
5	DA67-00269A	SHELF REF-A-ASSY	GLESS	3	
5-1	DA64-00114A	TRIM-SHELF REF-FRONT	P.P,BJ-730T4	3	
5-2	DA64-00116A	TRIM-SHELF REAR-A	P.P,BJ-730T4	3	
5-3	DA67-20346H	SHELF GALSS	GLASS,T4	3	
6	4713-00104I	LAMP-FLUORESCENT	220V,150mA,11W	1	
6-1	4713-001140	LAMP-INCANDESENT	240V,25W	1	
	4713-001141	LAMP-INCANDESENT	130V,25W	1	
7	DA63-00235A	COVER-LAMP REF	PP	1	
8	6002-000213	SCREW-TAPPING	TH-1S,M4X12,ZPC(YEL)	1	
9	DA97-00228A	COVER DAMPER-REF ASSY	PP,W-9540	1	
9-1	DA63-00239B	COVER-DAMPER REF	PP,W-9540	1	
9-2	DA72-00170A	SPACER-DAMPER, REF	PS	1	
10	DA67-30266D	CAP-SCREW	PP	1	
11	6002-000215	SCREW-TAPPING	TH-1S,M4X12,ZPC(YEL)	1	
12	DA63-10467A	COVER-SENSOR	HIPS	1	
13	DA32-10105B	SENSOR-ASSY	502AT	1	
14	DA63-00234A	COVER-SUCTION, REF	PP,W9540	1	
15	DA63-00870A	COVER-TOP TABEL ASSY	HIPS,SC-97527R	1	
15-1	DA63-00245B	COVER-TOP TABLE ASSY	ABS,SC-97527R,IN HOUSE	1	
15-2	DA64-00118A	BUTTON-PCB, R	ABS,SC-97527R	1	
15-3	DA64-00117A	BUTTON-PCB, L	ABS,SC-97527R	1	
15-4	DA63-00371A	GASKET-BUTTON PCB,R	MBR	1	
15-5	DA63-00390A	GASKET-BUTTON PCB,L	MBR	1	
15-6	DA70-00138A	PLATE-EARTH	SBHG1	1	
15-7	DA41-00014A	PBA-PANEL	COMBI	1	
15-8	DA41-00018B	PBA-MAIN	COMBI	1	
15-9	DA41-00013A	PBA-SUB	240V	1	
	DA41-20160B	PBA-SUB	127V	1	
15-10	DA39-00112A	WIRE HARNESS-INVERTER	INVERTER	1	
15-11	6002-000213	SCREW-TAPPING	TH-1S,M4X12,ZPC(YEL)	2	
15-12	DA34-00015C	SWITCH-DOOR	H3005CL,250V,25W	1	
16	6001-000366	SCREW-MACHING	FH,M4X10,CR PLT,STS304	2	
17	DA97-00526A	COVER TOP TABLE,ASSY	SEMI	1	
17-1	DA63-00328B	COVER TOP TABLE	≥#0" ABS	1	
17-2	DA64-00180B	BUTTON PCB,R	ABS,SC-97527R	1	
17-3	DA64-00180A	BUTTON PCB,L	ABS,SC-97527R	1	
17-4	DA63-00375A	GASKET-BUTTON PCB,R	NBR,BLACK	1	
17-5	DA63-00375A	GASKET-BUTTON PCB,L	NBR,BLACK	1	
17-6	DA70-00208A	PLATE-EARTH	COMBI	1	
17-7	DA41-00043A	PAN-PCB	COMBI	1	
17-8	DA41-00042A	MAIN-PCB	COMBI	1	
17-9	DA67-00329A	COVER DISPLAY	GPPS	1	
17-10	DA67-00444A	GASKET-WINDOW	NBR	1	
18	DA67-00206A	SHELF-REF LOW	GPPS(HF-2660),NTR	1	
19	DA67-00207A	SHELF-REF	GPPS(HF-2660),NTR,SRL36,L39	4	

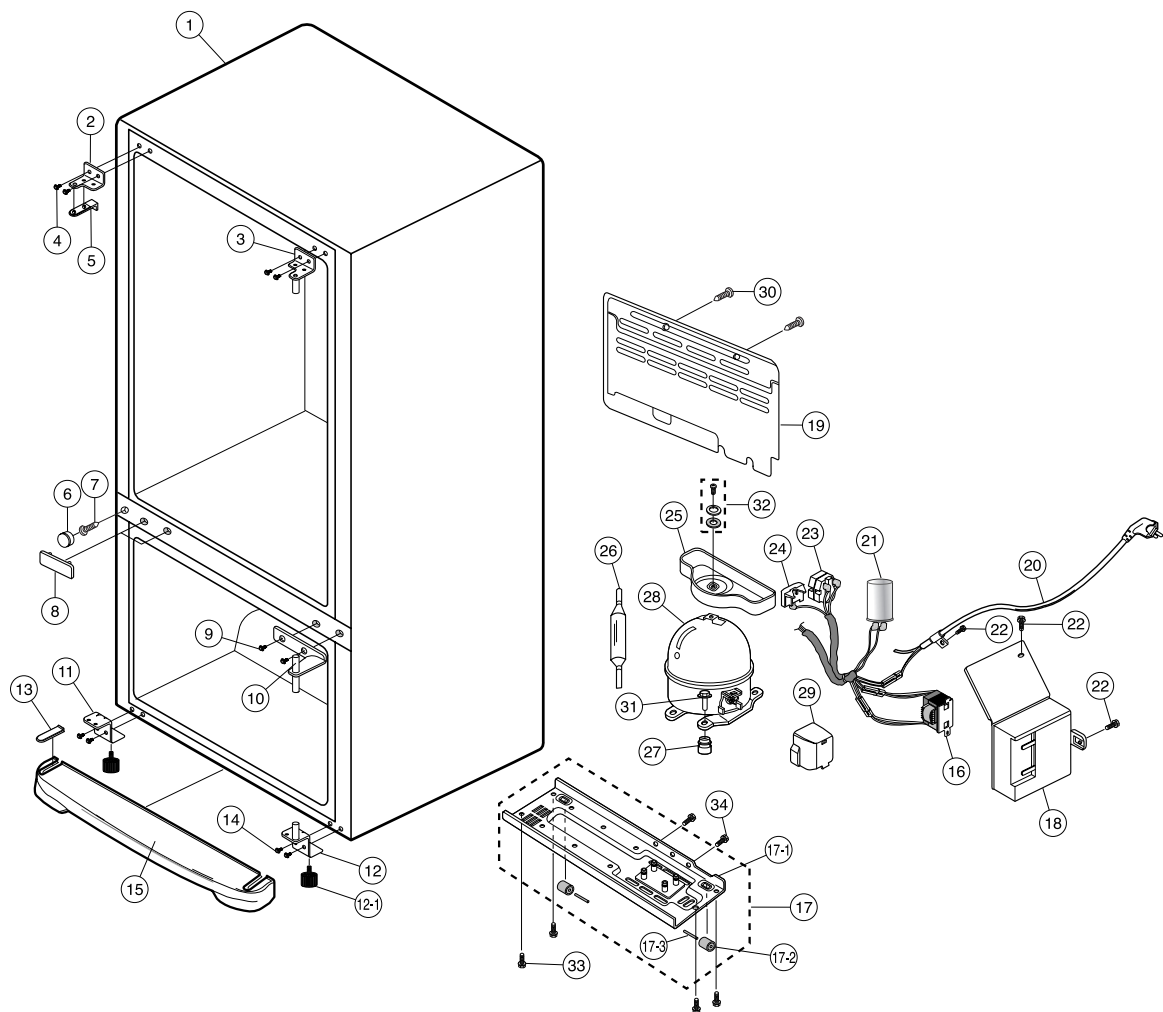
10-3. Door



■ Door List

NO	CODE-NO	ITEM	SPECIFICATION	Q'TY	REMARK
1	DA91-00711A	ASSY DOOR FOAM REF, DISP	SRL39, RICH-ROUND, COOLN'COOL	1	
	DA91-00711B	ASSY DOOR FOAM REF, DISP	SRL39, RICH-ROUND, COOLTECH DY	1	
	DA91-00694A	ASSY DOOR FOAM REF	SRL39, RICH-ROUND, COOL N' COOL	1	
	DA91-00694C	ASSY DOOR FOAM REF	SRL39, RICH-ROUND, COOLATRVH DY	1	
	DA91-00697A	ASSY DOOR FOAM REF	SRL39, RICH-ROUND, BAR-HANDLZ	1	
	DA91-00694B	ASSY DOOR FOAM REF	SRL39, RICH-ROUND, COOOOLATRVH DY	1	
	DA91-00694D	ASSY DOOR FOAM REF	SRL39, RICH-ROUND, COOLTECH DY	1	
	DA91-00697B	ASSY DOOR FOAM REF	SRL39, RICH-ROUND, BAR-HAUDLZ	1	
2	DA91-00699A	ASSY DOOR FIANM FEF	SRL36,39, RICH-ROUND, RECZSS	1	
	DA91-00699B	ASSY DOOR FIANM FEF	SRL36,39, RICH-ROUND, RECZSS	1	
	DA91-00699C	ASSY DOOR FIANM FEF	SRL36,39, RICH-ROUND, RECZSS	1	
	DA91-00701A	ASSY DOOR FIANM FEF	SRL36,39, RICH-ROUND, BAR-HANDLZ	1	
	DA91-00701B	ASSY DOOR FIANM FEF	SRL36,39, RICH-ROUND, BAR-HANDLZ	1	
3	DA63-00228A	GUARD-BOTTLE	GPPS(HF-2660),SD-97527R,SRL36,L39,WHT	1	
	DA63-00228B	GUARD-BOTTLE	GPPS(HF-2660),TRANSPARENT	1	
3-1	DA71-00118A	GUARD-BOTTLE	MSWR10,SNC2,SRL36,L39,PI5.5	1	
4	DA63-00227A	GUARD-VARIETY	REF,GPPS,SC-97527R,SRL36,L39,WHT	5	
	DA63-00227B	GUARD-VARIETY	REF,GPPS,TRANSPARENT	5	
5	DA63-00405A	GUARD-DAIRY ASSY	REF,GPPS,SC-97527R,SRL36,L39,WHT	1	
	DA63-00405B	GUARD-DAIRY ASSY	REF,GPPS,TRANSPARENT	1	
5-1	DA63-00229A	GUARD-DAIRY	REF,GPPS,SC-97527R,SRL36,L39,WHT	1	
	DA63-00229B	GUARD-DAIRY	REF,GPPS,TRANSPARENT	1	
5-2	DA63-00230A	COVER-DAIRY	GPPS,SRL36,L39	1	
6	DA63-00263A	GUARD-BOTTLE-DISP	GPPS,W9540,SRL39,WHT	1	
	DA63-00263B	GUARD-BOTTLE-DISP	GPPS,TRANSPARENT	1	
6-1	DA71-00119A	GUARD-BOTTLE-B	MSWR10,SNC2,SRL39(D),PI5.5	1	
7	DA66-00058A	TRAY-EGG	SRL36,L39,S.S	1	
8	DA63-00380A	GUARD-CAN CARRY	ABS(HG-0760)	1	
9	DA64-00157A	HANDLE BAR(FAT)	ABS(HG-0760S),W-97527R,SRL39	1	
9-1	DA67-00216A	CAP-HANDLE	ABS(HG-0760),W-97527R,SRL39	1	
9-2	6001-000715	SCREW-MACHINE	TH,+.M5 xL16,SWRCH18A	2	
9-3	DA67-00298A	CAP HOLE HANDLE BAR	ABS(HG-0760S),WHT(SC-97527R)	1	
10	DA61-00083A	HINGE-WASHER,LOW	POM(TP-20),NTR	1	
11	DA66-00073D	SHAFT-WASHER,D	T2.0,RD-PVC,N.T.R,SRL36,L39	1	
12	DA63-00247A	GROMMET-HINGE	NY-66,NTR,SRL36,L39,S.S	4	
13	DA74-00054A	TANK WATER-ASSY	PP,SRL39	1	
13-1	DA67-30216A	CAP-COVER WATER	PE,WHT	1	
13-2	DA63-00240A	COVER-WATER TANK	PP,SRL39,S.S	1	
13-3	DA65-20004A	CLAMP-TANK	P.C	2	
13-4	DA74-00051A	TANK WATER	PP,SRL39	1	
13-5	DA61-00139A	CASE-COCK ASSY	ABS,SC-97527R,SRL39,DISP	1	
14	DA67-00194A	CAP-HINGE HOLE	PP,SC-97527R,WHT	1	
15	DA66-00054A	TRAY-DISPENSER-A	ABS(HG-0760H),SRL39,W-97527,S.S,WHT	1	
16	DA66-00055A	TRAY-DISPENSER-B	ABS(HG-0760H),SRL39,W-97527,S.S,WHT	1	
17	DA63-00376A	COVER DISPENSER-ASSY	SRL39	1	
18	DA71-20155B	FIXER-CASE,ASSY	ABS,SR-L5285,L5785,SC-9343	1	

10-4. Cabinet Parts & Unit



■ Cabinet Parts & Unit Lists

NO	CODE-NO	ITEM	SPECIFICATION	Q'TY	REMARK
1	—	ASSY CABI FOAM	—	—	
2	DA61-00075A	HINGE-UPPER-L	SHP1,SRL36,L39,ZPC2	1	
3	DA61-00073A	HINGE-UPPER ASSY-R	SHP1,SRL36,L39,ZPC2	1	
4	DA60-10123E	SCREW-TAP TITE	HH,M6,L19,ZPC2-W,GSD 3KM	4	
5	DA67-00196A	CAP-HINGE HOLE-UPP	PP,SC-97527R,WHT	1	
6	DA67-30218R	CAP-SCREW	ABS,SC-97527	1	
7	DA60-00003A	SCREW-TAP,PH	PH,TAPPING,4X10	1	
8	DA67-00195A	CAP-HINGE HOLE-MID	PP,SC-97527R,WHT	1	
9	DA60-10123E	SCREW-TAP TITE	HH,M6,L19,ZPC2-W,GSD 3KM	2	
10	DA61-00146A	HINGE MID ASSY	SRL36,L39	1	
11	DA61-00128A	HINGE-LOW-L-ASSY	SHP1,SRL36,L39,ZPC2	1	
12	DA61-00127A	HINGE-LOW,R-ASSY	SHP1,SRL36,L39,ZPC2	1	
12-1	DA61-00084A	FOOT-FRONT	PP,NTR,SRL36,L39	2	
13	DA67-00197A	CAP-HINGE HOLE-LOW	PP,SC-97527R,WHT	1	
14	DA60-10124A	SCREW-TAP TITE	HH,M6,L16,ZPC2-Y	4	
15	DA63-00241A	COVER-LEG,FR	SC-97527R	1	
16	DA26-00003A	TRANS DC	240V,50/60Hz	1	
	DA26-00003B	TRANS DC	127V,50/60Hz	1	
17	DA71-00109A	CHASSIS-COMP ASSY	SBHG1	1	
17-1	DA71-00101A	CHASSIS-COMP	SBHG1	1	
17-2	DA61-40115B	CASTER-FRONT	PP,NTR,SR-50	2	
17-3	DA60-90124A	RIVET	MSWR10,OD6.0,L56,ZPC3	2	
18	DA61-00089A	CASE-JUNCTION	PP,SRL36,L39,S,S,NTR	1	
19	DA63-00398A	COVER COMP-ASSY	SBHG1,SRL39	1	
20	-	POWER-CODE	-	1	OPTION
21	2501-001185	C-OIL	3.5 μ F,350V	1	
	2501-001185	C-OIL	5 μ F,350V	1	
	2501-001045	C-OIL	12 μ F,250V	1	
22	6002-001118	SCREW-TAPPING	TH,SOCKET(HEX),M4	3	
23	DA35-10013B	RELAY-PTC	J531Q35E330M3852	1	
	DA35-10013E	RELAY-PTC	J531Q33E100M2002	1	
24	DA34-10003H	PROTECTOR-O/L	4TM213PHBY-53	1	
	DA34-10003N	PROTECTOR-O/L	4TM412PHBY-53	1	
25	DA66-00031C	TRAY-DRAIN WATER	T3-P/J(2ND),S,S,0.6	1	
26	DA73-30102B	DRYER-ASSY	CU,OD18.85,ID2,L102,2P,10.0G	1	
27	DA63-40004A	GROMMET-COMP	NBR	4	
28	DK4A1Q-L1U	COMPRESSOR	R600a	1	
	SK170H-L1U	COMPRESSOR	R134a	1	
	DK172P-L2U	COMPRESSOR	R134a	1	
29	DA63-10352A	COVER-RELAY	BLK	1	
30	6002-000217	SCREW-TAPPING	TH,4X8,ZPC(YEL),MSWR10	2	
31	DA60-20008A	BOLT-HEX	SM30C,L42.6	4	
32	DA60-00018A	SCREW-ASSY	TH+,STS304	2	
33	DA60-10124A	SCREW-TAP TITE	HH,M6,L16,ZPC2-Y	4	
34	DA60-10107A	SCREW-EARTH	BSBN PT M4X10	2	

11. Disassembly & Assembly

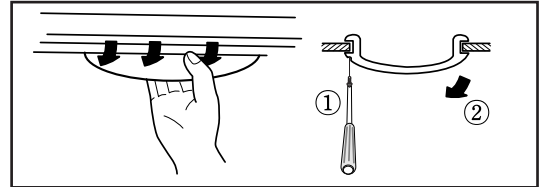
11-1. Replacement of refrigerator Incandescent lamp



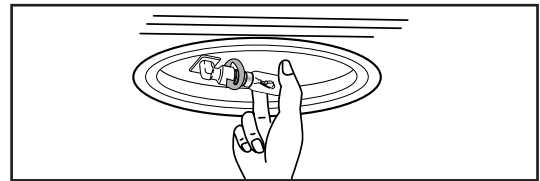
Warning

Always take out the power plug when replacing the refrigerator lamp. There is the danger of electric shock.

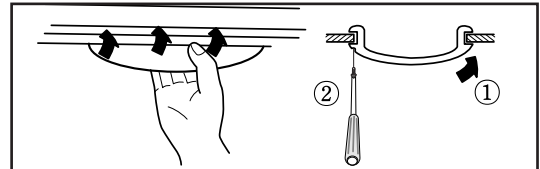
1. Remove a screw from the cover and pull down the cover with the back latch pressed.



2. Pull out the lamp.



3. After replacing the lamp, assemble the front latch of cover and then connect the back latch and screw on the cover.



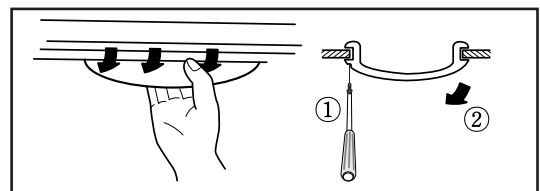
11-2. Replacement of refrigerator fluorescent lamp



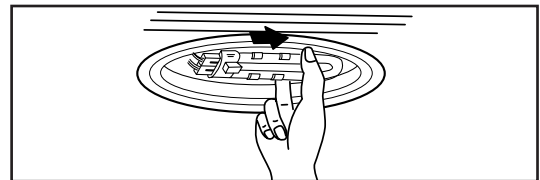
Warning

Always take out the power plug when replacing the refrigerator lamp. There is the danger of electric shock.

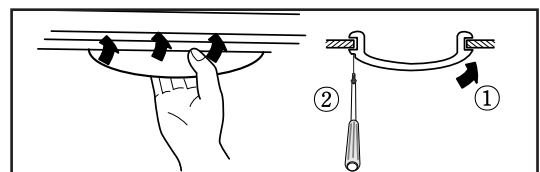
1. Remove a screw from the cover and pull down the cover with the back latch pressed.



2. Pull out the lamp.

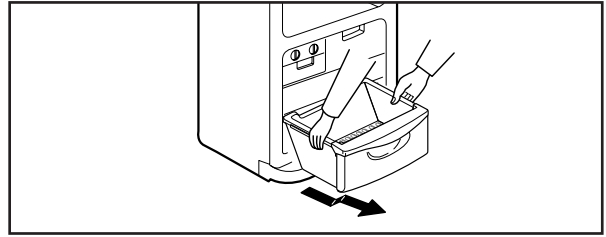


3. After replacing the lamp, assemble the front latch of cover and then connect the back latch and screw on the cover.

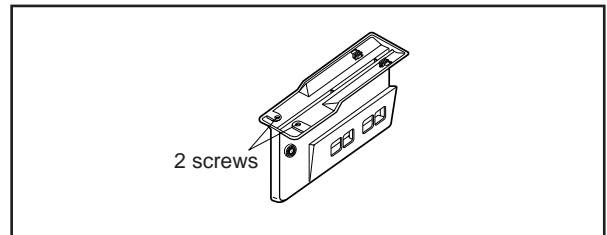


11-3. Disassembly of the cooling cycle unit in the freezer

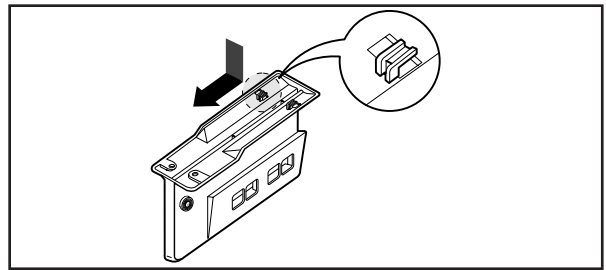
1. Take out the case from the freezer.



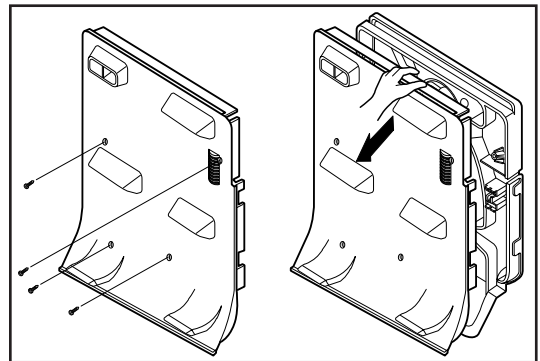
2. Remove 2 screws from the holder of the cooling cycle unit.



3. Pull out the holder of the cooling cycle unit and disconnect wire terminals.



4. Pull forward the insulating material of the cooling cycle unit and remove the wire terminal and insulating material.



5. Remove 2 screws securing refrigerator duct and pull it out by following the arrow.

