

WINIA

MANUAL DE SERVICIO Y DESPIECE

LAVADORA WVD-06T1WW10U



MAKE IT EASY _____
WINIA

These dimensions to be checked at CPK.
Bu ölçümlerin kontrol edilecek ölçüler için kontrol yapılacaktır.

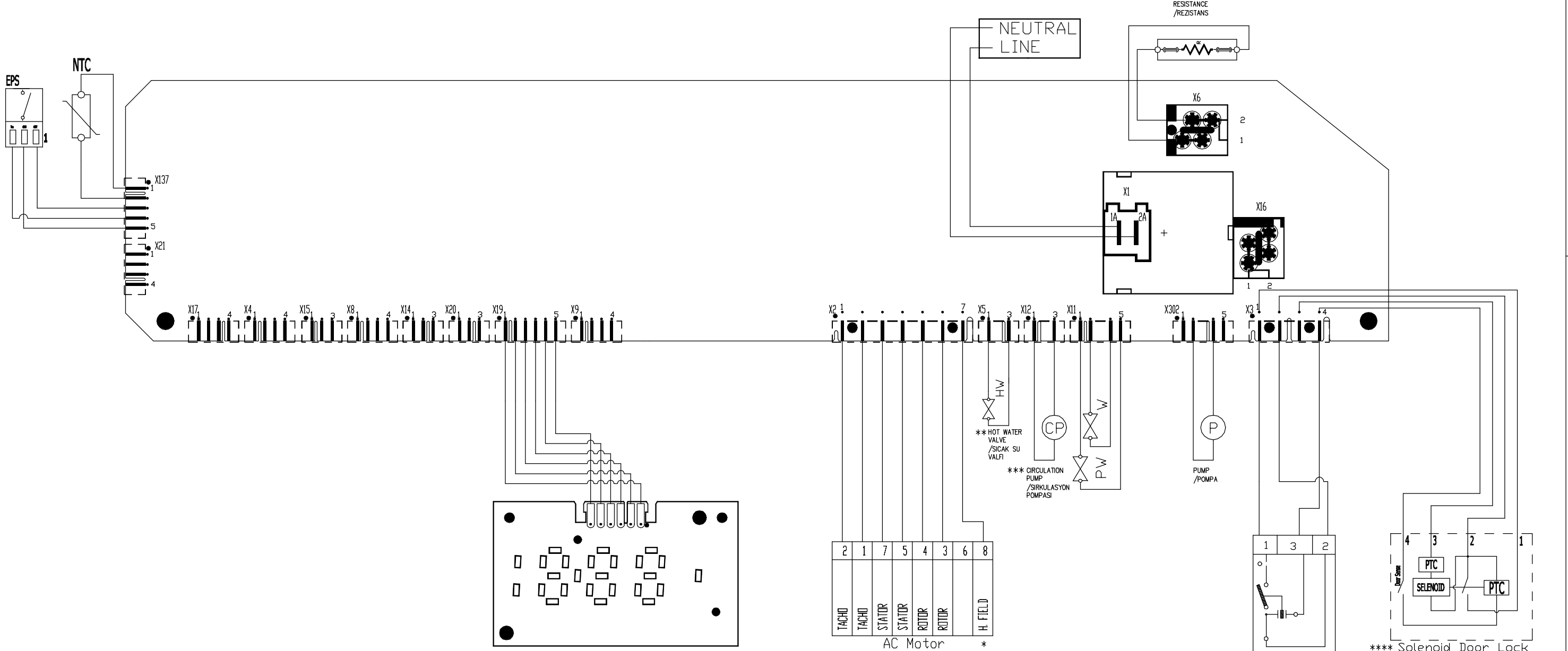
These dimensions to be checked at CPK.
Bu ölçümlerin kontrol edilecek ölçüler için kontrol yapılacaktır.

These dimensions to be checked at CPK.
Bu ölçümlerin kontrol edilecek ölçüler için kontrol yapılacaktır.

These dimensions to be checked at CPK.
Bu ölçümlerin kontrol edilecek ölçüler için kontrol yapılacaktır.

This drawing contains confidential information and is the property of VESTEL Beyaz Eşya Sanayi Tic.A.Ş. without whose permission may not be copied, shown or handed to a third party or otherwise used and it is to be returned promptly upon request to the design owner, who is responsible for the drawing.

Bu doküman gizli bilgiler içerebilir. Dokümanın VESTEL Beyaz Eşya Sanayi Tic. A.Ş.'nin yazılı izni alınmadan dağıtılması, kopyalanması, çoğaltılması, yayılması, satılması veya başka bir şekilde kullanılması yasaktır. Eğer gerekli ise dokümanın sergisinin için ön izni alınması gerekmektedir.



Definitions:

EPS : Electronic Pressure Sensor / Elektronik Basınç Sensörü
 NTC : Temperature Sensor / Sıcaklık Sensörü
 H. FIELD : Half Field / Yarım Sargı
 W : Main-Wash Valve / Ana Yıkama Valfi
 PW : Pre-Wash Valve / Ön Yıkama Valfi
 HV : Hot Water Valve / Sıcak Su Yıkama Valfi
 CP : Circulation Pump / Sirkülsasyon Pompası

Note: Please see the table for * marking below

| The optional connections according to product properties / Ürün özelliğine göre değişen opsiyonel bağlantılar | |
|---|--|
| Half Field / Yarım Sargı * | |
| Hot Water Valve / Sıcak Su Valfi ** | |
| Circulation Pump / Sirkülsasyon Pompası *** | |
| Door Lock / Kapi Kilidi **** | |

Herhangi bir değişiklikte, etkilenen diğer parçalar ürün ağacları yolu ile bulunup gerekli değişiklikler yapılmalıdır.
 Apply the required revisions on other related parts by locating through BOM lists

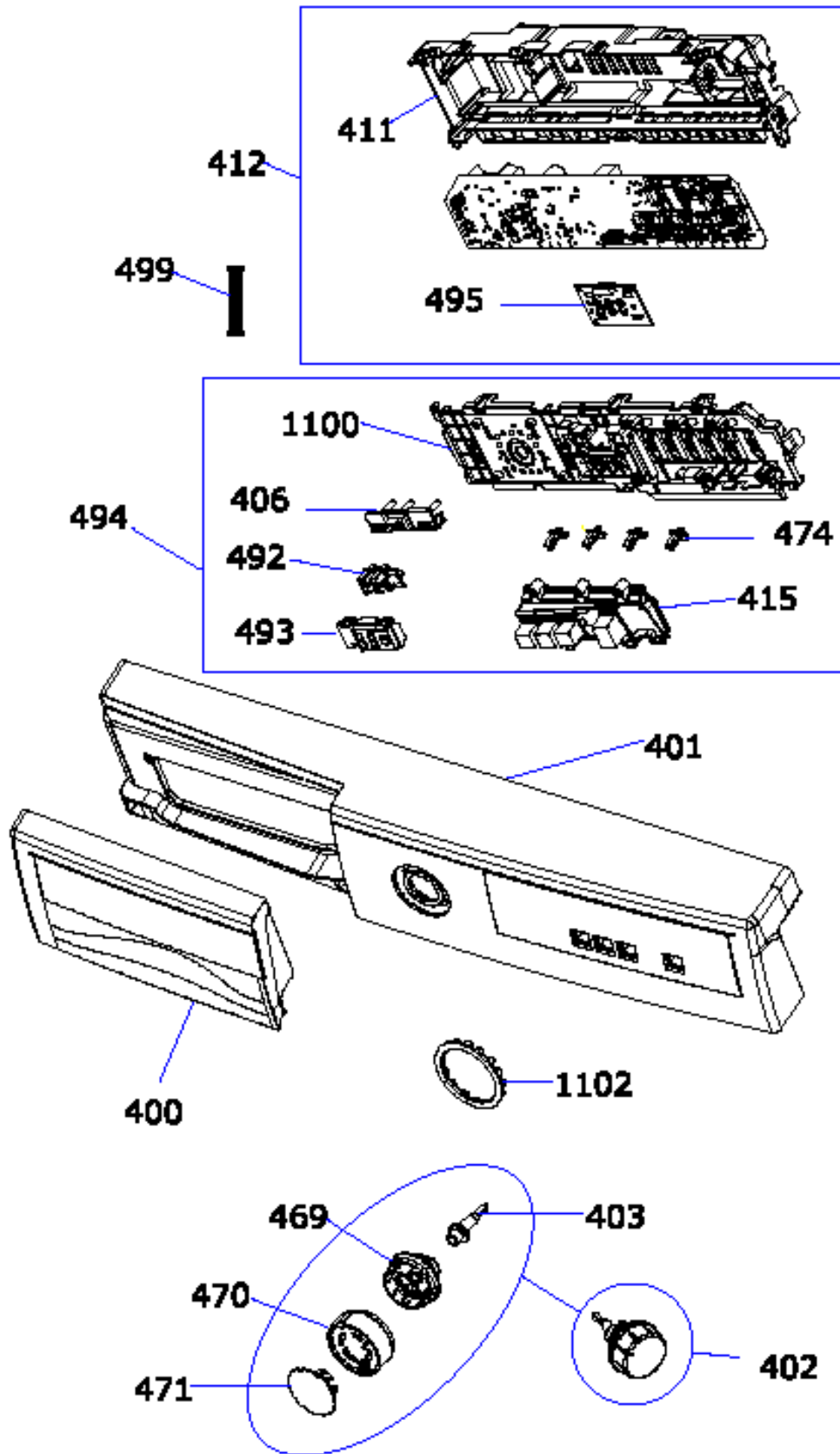
| NO | TEK | NOTES AÇIKLAMALAR | CHANGE NO DEĞ. NO | CHANGE DATE DEĞ. TARİHİ | CHANGED BY DEĞ. YAPAN | CHECKED BY KONTROL EDEN | APPROVED BY ONAYLAYAN |
|----|-----|---|----------------------------|----------------------------|---|---|--------------------------|
| | | | | | | | |
| | | DİĞERSAL TOLERANSLAR LINEAR TOLERANCES | ADI-SOYADI NAME-SURNAME | İMZA SIGNATURE | RESİM NO: DRAWING NO: VWM-10601-00 | YAYIN TARİHİ: ISSUE DATE: 26.06.2019 | |
| | | GEOMETRİK TOLERANSLAR GEOMETRIC TOLERANCES | ÇİZEN DRAWN BY | Y. Emre ÜZCAN | PARÇA KODU: PART CODE: - | | |
| | | GENEL TOLERANSLAR GENERAL TOLERANCES | KONTROL EDEN CHECKED BY | SERKAN BALCI | PARÇA ADI: PART NAME: T0-T1-T2-AC-Yıkayıcı-PTC Kapi Kilidi Elektriksel Bağlantı Senesi | | |
| | | ACISAL TOLERANSLAR ANGULAR TOLERANCES | ONAYLAYAN APPROVED BY | SERKAN BALCI | PARÇA ADI: PART NAME: T0-T1-T2-AC Washer-PTC Door Lock Connection Diagram | | |
| | | MALZEME MATERIAL | &malzeme | | | | |
| | | | | | | DİLÇEK SCALE | DRAWING SCALE |
| | | | | | | SAYFA/TAMAMI: SHEET/TOTAL: | 1 / 1 |

Tüm parça ve malzemeler, 2002/95/EC RoHS direktifine (elektrikli ve elektronik eşyalarda bazı zararlı maddelerin kullanımının sınırlandırılmasına dair yönetmelik) uygun olmalıdır. / All parts and materials must comply with directive 2002/95/EC (RoHS) on the restriction of the use of certain hazardous substances in electrical and electronic equipment.

Tüm ambalaj parça ve malzemeleri ambalaj atıklarının kontrolü yönetmeliğine uygun olmalıdır. / All packaging parts and materials must comply with directive 94/62/EC on packaging and packaging waste.

TO EXPLODED VIEW

1. CONTROL PANEL PARTS



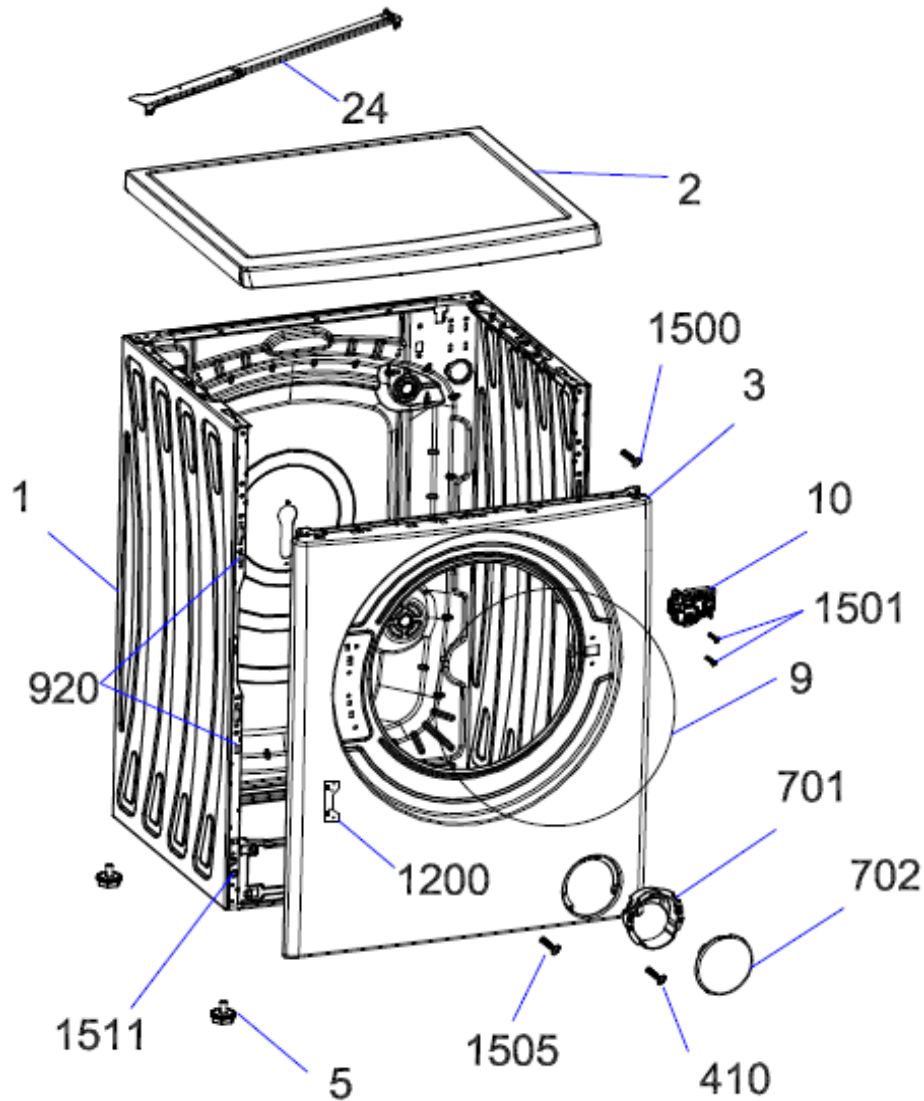
TO EXPLODED VIEW

| NO | PART NAME | QUANTITY |
|------|--|----------|
| 400 | DETERGENT DRAWER COVER | 1 |
| 401 | CONTROL PANEL | 1 |
| 402 | PR. ADJUSTMENT KNOB GR | 1 |
| 403 | PROGRAMME ADJUSTMENT SHAFT | 1 |
| 405 | LIGHT GUIDE DUO | 1 |
| 411 | PCB BOX | 1 |
| 412 | ELECTRONIC CARD | 1 |
| 415 | TRIPLE SELECTION BUTTON | 1 |
| 469 | PROGRAM ADJ. INSERT | 1 |
| 470 | PROGRAM ADJ. KNOB | 1 |
| 471 | PROGRAM ADJ. KNOB COVER | 1 |
| 474 | BUTTON SHAFT/T SERIES | 4 |
| 492 | DISPLAY 1888 LIGHT GUIDE | 1 |
| 493 | DISPLAY 888 COVER/PARDUS | 1 |
| 494 | PCB COVER-SELECTION BUTTON.GR. | 1 |
| 495 | T1/T2 CARD GR.AMBER | 1 |
| 499 | LCD COMMUNICATION CABLE-MECHANICAL | 1 |
| 500 | CONTROL PANEL GROUP (indicated for the website) | 1 |
| 1100 | PCB BOX REAR COVER | 1 |
| 1102 | LIGHTGUIDE INSERT | 1 |

***469-470-471-1102 “This spare part is optional and depends on agreed specifications. Therefore you may not find this position number in product’s spare part list.”**

TO EXPLODED VIEW

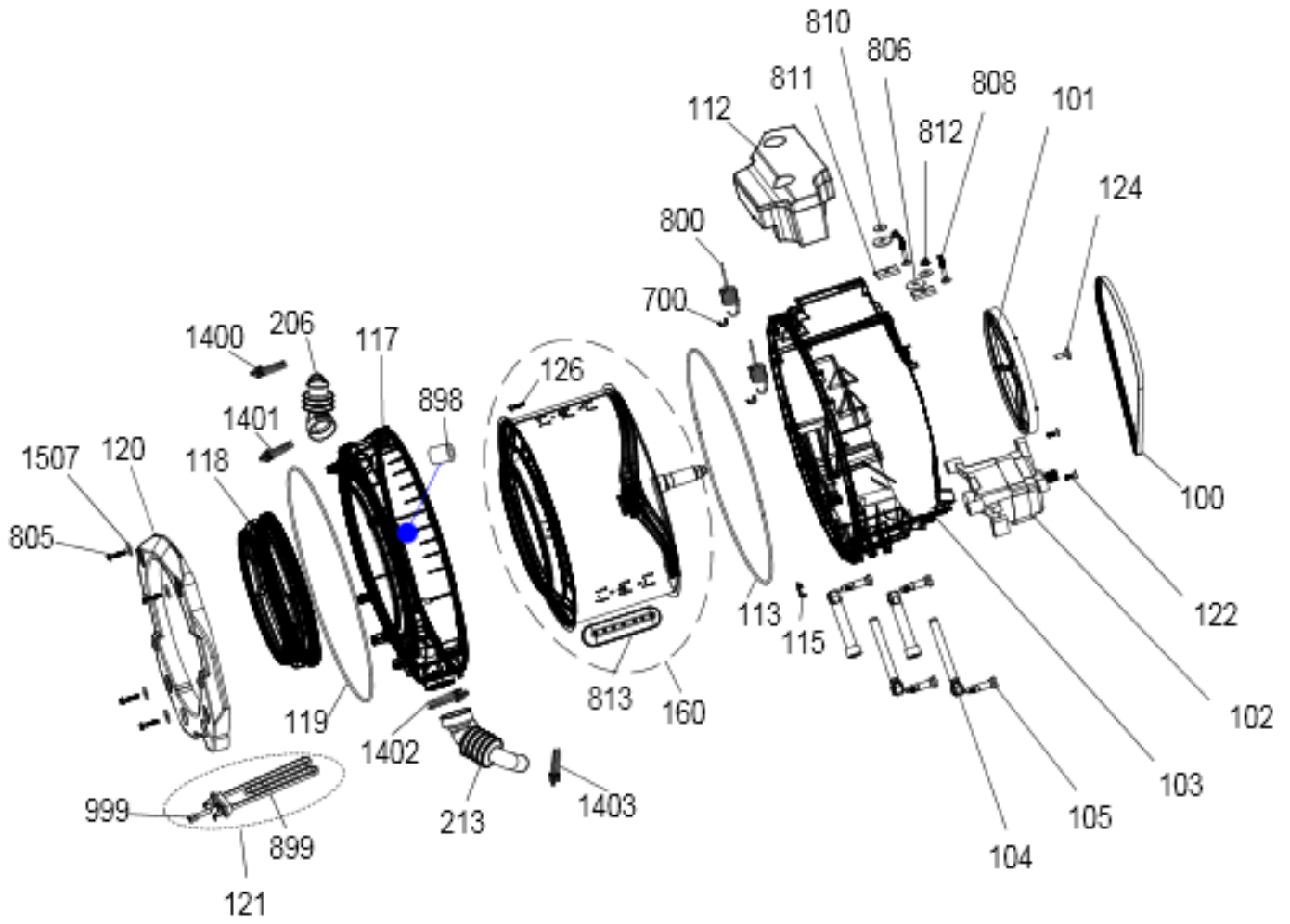
2. FRONT PANEL PARTS



| REF. NO | PART NAME | QTY |
|---------|--|-----|
| 1 | BODY GROUP PAINTED | 1 |
| 2 | UPPER TRAY GROUP | 1 |
| 3 | FRONT PANEL GROUP | 1 |
| 5 | ADJUSTABLE FEET GR. | 4 |
| 9 | HOUSING FRAME BELLOW CLIP-PHYTON | 1 |
| 10 | DOOR LOCK | 1 |
| 24 | UPPER SUPPORT BRAKET | 1 |
| 701 | PUMP COVER HOUSING | 1 |
| 702 | PUMP COVER | 1 |
| 920 | FRONT PANEL DROP FIXING PLASTIC-II | 4 |
| 1200 | HINGE SUPPORT SHEET | 1 |
| 1500 | ST 4,2X9,5 TRTSB | 2 |
| 1501 | ISO 7049 ST 4,2X16 TORX | 2 |
| 1504 | ISO 7049 ST 4,2X13 TORX | 4 |
| 1505 | ST 4,8X9,5 PAN HE.WITH COL.TORX UN.SER.E | 2 |
| 1511 | FRONT PANEL DROP FIXING PLASTIC-I-B | 2 |
| 410 | SCREW 4X12 TORX PAN HE.W.COL.UND.HE.SER. | 1 |

TO EXPLODED VIEW

3.WASHING GROUP PARTS

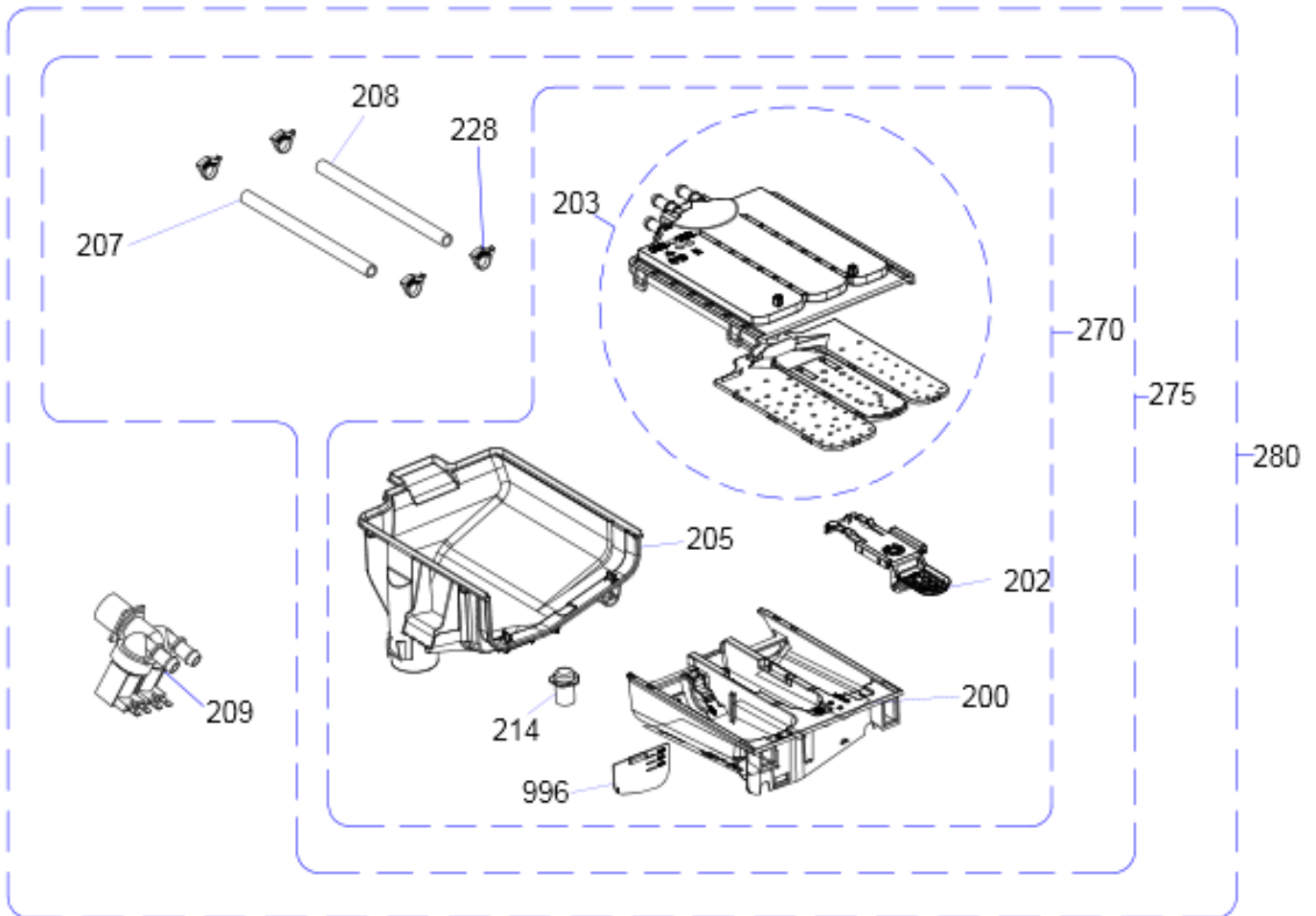


TO EXPLODED VIEW

| NO | PART NAME | QUANTITY |
|------|--|----------|
| 100 | BELT | 1 |
| 101 | DRIVEN PULLEY | 1 |
| 102 | MOTOR | 1 |
| 103 | REAR TUB GROUP | 1 |
| 104 | SHOCK ABSORBER | 2 |
| 105 | SHOCK ABSORBER PIM | 2 |
| 112 | UPPER COUNTERWEIGHT | 1 |
| 113 | TUB SEAL | 1 |
| 115 | RESISTANCE FIXING WIRE | 1 |
| 117 | FRONT TUB | 1 |
| 118 | TUB BELLOWS SEAL | 1 |
| 119 | TUB BELLOW CLIP | 1 |
| 120 | FRONT COUNTERWEIGHT | 1 |
| 121 | RESISTANCE GROUP | 1 |
| 122 | COUNTERSUNK HEAD BOLT 8X25 TORK | 2 |
| 124 | COUNTERSUNK HEAD BOLD M 8X29 | 1 |
| 126 | HEXAGON HEAD BOLT 6 X 30 | 12 |
| 160 | DRUM GROUP | 1 |
| 206 | TUB ENTERANCE WITH BELLOW HOSE | 1 |
| 213 | TUB EXIT WITH BELLOW HOSE | 1 |
| 700 | TUB HANGER SPRING PART | 2 |
| 800 | HANGER SPRING | 2 |
| 806 | DUZ RONDELA 8.4X28X3 | 2 |
| 807 | HEXAGON HEAD BOLT | 4 |
| 808 | WASHER 8,4X28X3 | 4 |
| 809 | WASHER 8,5X35X3 | 2 |
| 811 | UPPER CONCRETE SUPPORT SHEET IRON PART | 2 |
| 812 | NUT M8 | 2 |
| 813 | PLASTIC LIFTER | 1 |
| 810 | UPPER COUNTERWEIGHT WASHER 9X30X3 | 3 |
| 898 | PSW HOSE MOUNTING RUBBER | 2 |
| 899 | RESISTANCE WITHOUT NTC | 1 |
| 999 | NTC | 1 |
| 1400 | SCREWED HOSE CLAMP Ø65 | 1 |
| 1401 | SPRING TYPE BANT CLAMP | 1 |
| 1402 | HOSE CLAMP SCREW TYPE Ø72 | 1 |
| 1403 | HOSE CLAMP Ø38,8 | 1 |
| 1507 | DÜZ RONDELA 10.5X30X2.5 | 4 |

TO EXPLODED VIEW

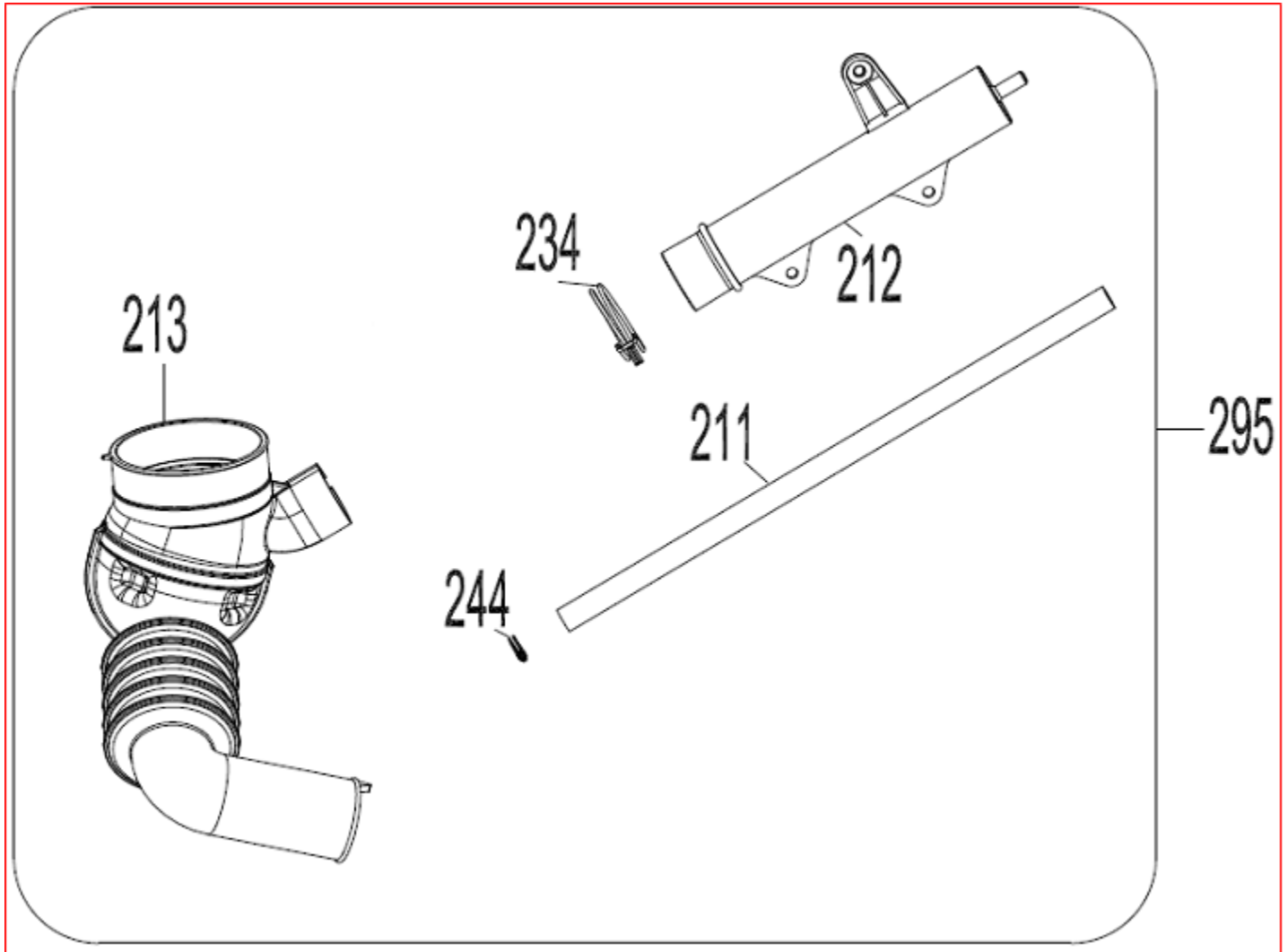
4.DETERGENT DRAWER GROUP



| NO | PART NAME | QUANTITY |
|-----|--------------------------------|----------|
| 200 | DETERGENT DRAWER | 1 |
| 202 | SIPHON COVER | 1 |
| 203 | WATER DISTRIBUTION PLATE GROUP | 1 |
| 205 | DETERGENT DRAWER HOUSING | 1 |
| 207 | VALVE-DETERGENT BOX HOSE | 1 |
| 209 | VALVE(TWO EXIT) | 1 |
| 214 | DETERGENT DRAWER LOCKING PART | 1 |
| 228 | PLASTIC HOSE CLAMP | 6 |
| 996 | LIQUID DETERGENT LEVEL PLATE | 1 |
| 270 | DETERGENT BOX GROUP | 1 |
| 275 | DETERGENT BOX GROUP/HOSE | 1 |
| 280 | DETERGENT BOX GROUP/FULL | 1 |

TO EXPLODED VIEW

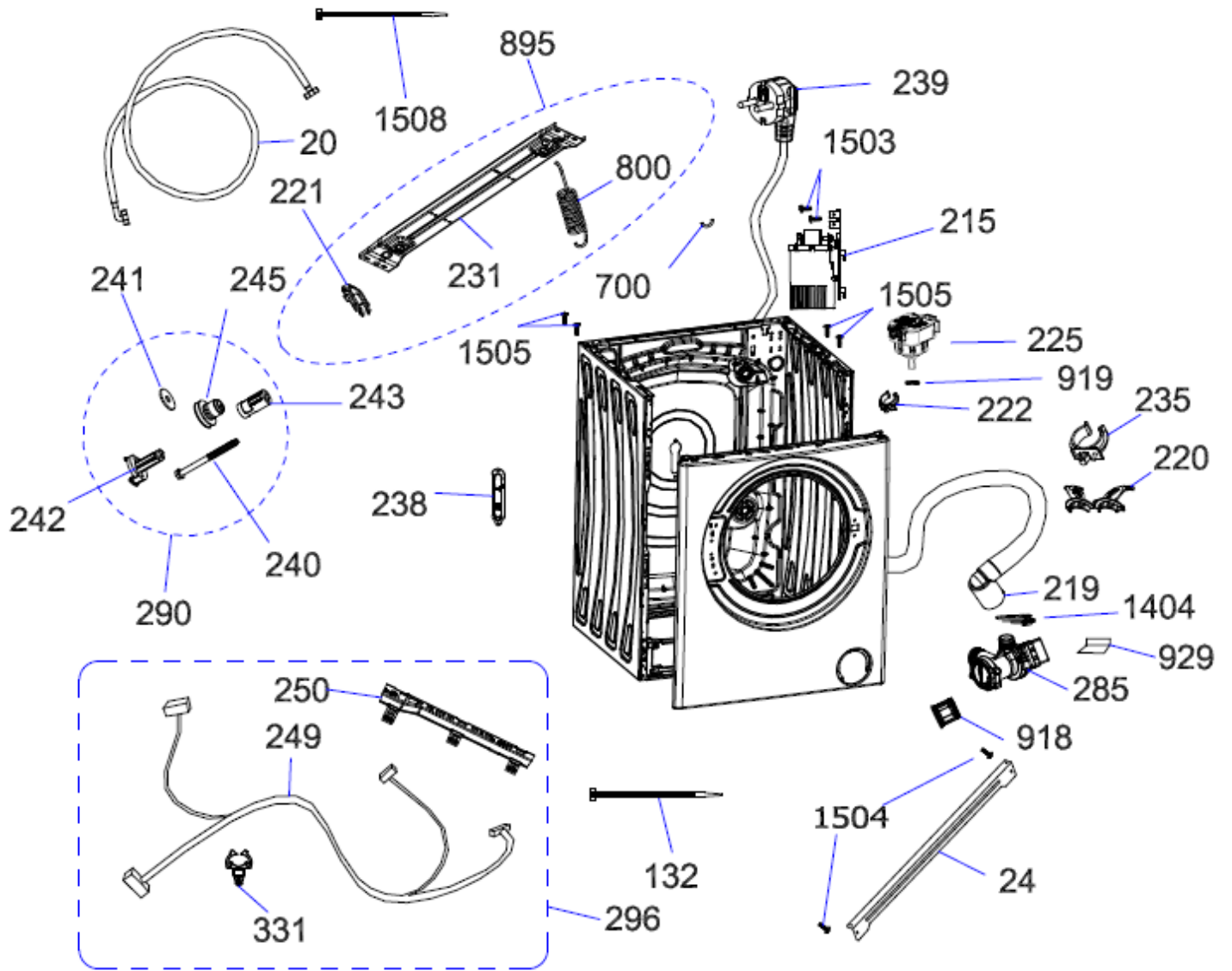
5. PRESSURE SWITCH HOSE GROUP



| NO | PART NAME | QUANTITY |
|-----|---------------------------------|----------|
| 213 | TUB EXIT WITH BELLOW HOSE | 1 |
| 212 | PRESSURE SWITCH WATER RESERVOIR | 1 |
| 211 | PRESSURE SWITCH HOSE | 1 |
| 234 | HOSE CLAMP Ø32,7 | 1 |
| 244 | HOSE CLAMP Ø9,6 | 1 |
| 295 | PRESSURE SWITCH HOSE GROUP | 1 |

213-212-211-234-244----- PRESSURE SWITCH HOSE GROUP

6. BODY GROUP PARTS

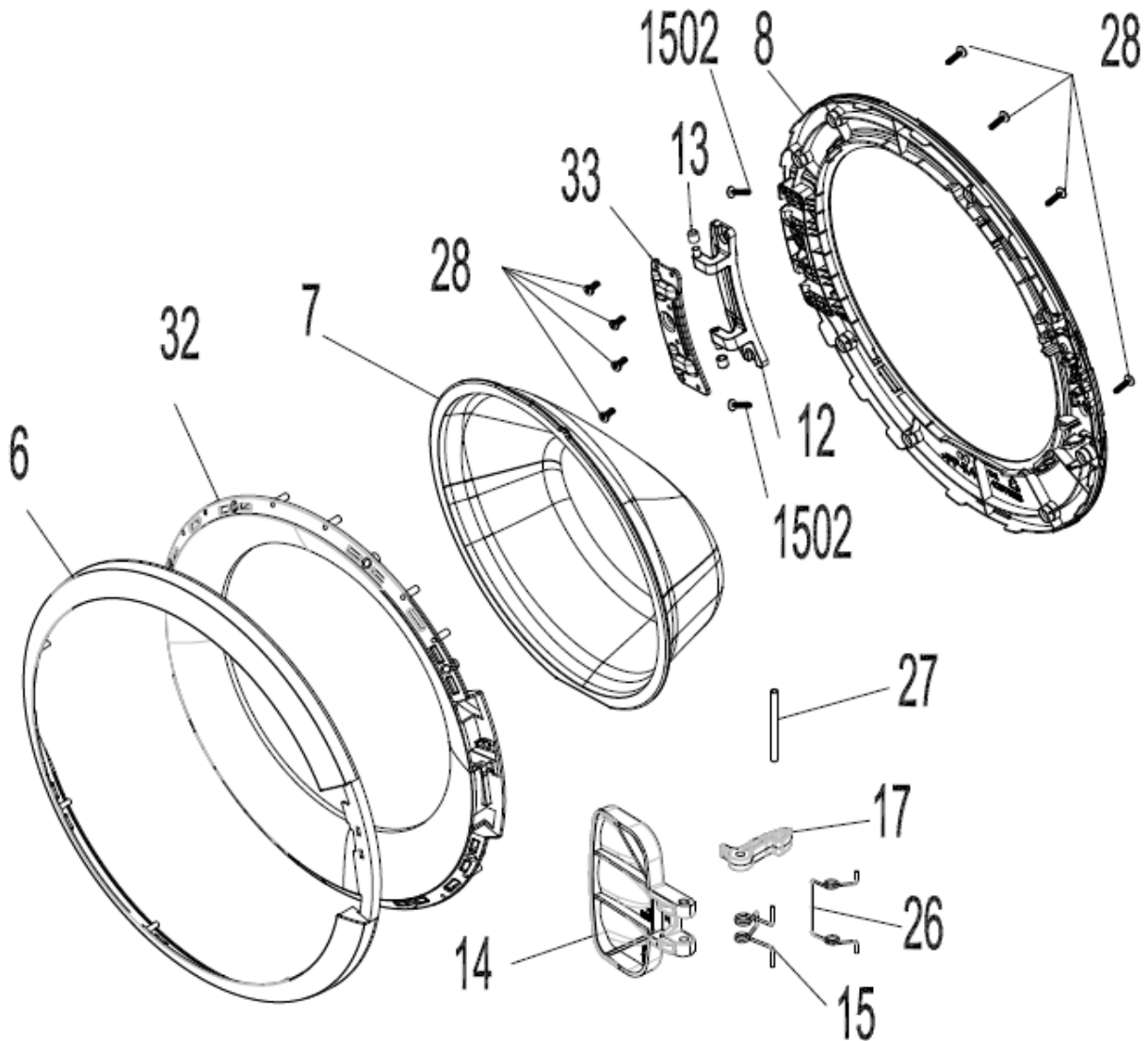


TO EXPLODED VIEW

| REF. NO | PART NAME | QTY |
|---------|---|-----|
| 20 | WATER ENTRY HOSE GROUP | 1 |
| 24 | UPPER SUPPORT BRACKET | 1 |
| 285 | PUMP GROUP | 1 |
| 220 | DRAIN HOSE ROUTER PLASTIC | 1 |
| 219 | DRAIN HOSE | 1 |
| 225 | ELECTRONIC PRESSURE SENSOR | 1 |
| 215 | EMI FILTER | 1 |
| 296 | CABLE GR | 1 |
| 249 | CABLE HARNESS | 1 |
| 250 | CABLE HARNESS HOLDER PLS | 1 |
| 331 | LOCKING WIRE SADDLE (BLUE) | 1 |
| 895 | SPRONG HANGER BRACKET GROUP | 1 |
| 800 | TUB SPRING | 2 |
| 231 | SPRING HANGER BRACKET | 1 |
| 221 | HANGER SPRING BRACKET PLS. | 2 |
| 700 | TUB HANGER SPRING PART (PLASTIC HOUSING PART BETWEEN TUB AND SPRING HOOK) | 2 |
| 235 | DRAIN HOSE HOLDING PLS | 4 |
| 239 | POWER CORD GROUP | 1 |
| 222 | PRESSURE SWITCH MOUNTING CLIP | 1 |
| 238 | SPEED CONTROL HOLE STOPPER | 1 |
| 290 | TRANSPORT SCREW GROUP-II | 4 |
| 242 | TRANSPORT SCREW PLASTIC-A-II | 4 |
| 243 | TRANSPORT SCREW PLASTIC-B-II | 4 |
| 240 | TRANSPORT SCREW | 4 |
| 245 | TRANSPORT SCREW EPDM | 4 |
| 241 | PLAIN WASHER 8,30X29X2 | 4 |
| 132 | CABLE TIE(YKB150) | 7 |
| 918 | PUMP FILTER | 1 |
| 919 | HOSE CLAMP Ø8,6 | 1 |
| 1404 | HOSE CLAMP.Ø35,0 | 1 |
| 1503 | ST 4,2X9,5 PAN HEAD W.COL.T.UNDER.SER.EA | 2 |
| 1504 | ISO 7049 ST 4,2X13 TORX | 4 |
| 1505 | ST 4,2X9,5 TRTSB | 4 |

TO EXPLODED VIEW

7. DOOR GROUP



| NO | PART NAME | QUANTITY |
|------|---|----------|
| 6 | PORTHOLE OUTER PLASTIC | 1 |
| 7 | DOOR GLASS | 1 |
| 8 | PORTHOLE INNEER PLASTIC | 1 |
| 12 | SHEET METAL HINGE GROUP | 1 |
| 13 | HINGE PLASTIC | 2 |
| 14 | DOOR HANDLE | 1 |
| 15 | HOOK SPRING | 1 |
| 16 | HANDLE SPRING | 1 |
| 17 | HOOK | 1 |
| 26 | HANDLE SPRING | 1 |
| 27 | DOOR HANDLE PIM | 2 |
| 28 | SCREW 3.5X16PAN.HE.WITH COL.CR.RE.UN.HE | 8 |
| *32 | PORTHOLE INNER FRAME | 1 |
| 50 | PORTHOLE GROUP (1502 excluded) | 1 |
| 1502 | SCREW M5X8 TSB (this part is not include in porthole group) | 2 |

* 32 “This spare part is optional and depends on agreed specifications. Therefore you may not find this position number in product’s spare part list.”

| CÓDIGO | NOMBRE | DESCRIPCIÓN | POSICIÓN |
|----------|---------------------------------|--|----------|
| 42028889 | ENCIMERA | UPPER TRAY GROUP/42/SIGMA PLUS | 2 |
| 22035571 | PATAS AJUSTABLES | ADJUSTABLE FEET SBR-H | 5 |
| 47003030 | CRISTAL PUERTA | DOOR GLASS/ALVA | 7 |
| 37008604 | ARO SUJECCIÓN GOMA PUERTA FRONT | BODY-GASKET CLAMP-ALVA-2 | 9 |
| 32024465 | INTERRUPTOR DE PUERTA | DOOR LOCK M8(TER-METALFLEX) | 10 |
| 42116450 | TIRADOR PUERTA | DOOR HANDLE/D65 | 14 |
| 35007443 | MUELLE GANCHO PUERTA | D. HANDLE COMP(HOOK SPRING) | 15 |
| 37008931 | GANCHO DE PUERTA | DOOR HOOK II.(METAL) | 17 |
| 40014423 | TUBO ENTRADA AGUA | WATER ENTRY HOSE GR/COLD | 20 |
| 35007434 | CRISTAL PUERTA | DOOR HANDLE TONGUE PIM | 27 |
| 42116461 | PUERTA COMPLETA | PORTHOLE GROUP R(D65) | 50 |
| 42028149 | CORREA | BELT(400-1000RPM 32-50)INSULATING-HUTCHI | 100 |
| 22115426 | POLEA | DRIVEN PULLEY TUF | 101 |
| 32027577 | MOTOR LAVADO | MOTOR(1000-42 LT TUF)TYPE23-WELLING | 102 |
| 20820299 | CUBA TRASERA | REAR TUB GROUP(TUF-E) | 103 |
| 47010522 | AMORTIGUADOR | SHOCK ABSORBER-7 | 104 |
| 42025094 | PASADOR AMORTIGUADOR | SHOCK ABSORBER PIM-2 | 105 |
| 42105195 | CUBA FRONTAL | FRONT TUB TUF-TYPE2 | 117 |
| 42077485 | GOMA PUERTA | TUB BELLOWS SEAL/ALVA 3-C | 118 |
| 37008603 | ARO SUJECCIÓN GOMA PUERTA TRASE | TUB-GASKET CLAMP-ALVA -2 | 119 |
| 20846083 | RESISTENCIA + NTC | RESISTANCE GR.(STR) | 121 |
| 22006747 | BOMBO | DRUM GROUP/E-1000-SK | 160 |
| 42087110 | TUBO DE JABONERA A BOMBO | TUB ENTERANCE WITH BELLOW HOSE-C | 206 |
| 32035767 | VÁLVULA ENTRADA | VALVE(2 EXIT-RAST2,5) | 209 |
| 32005983 | FILTRO ANTIPARÁSITOS | PARASITE FILTER(0,47 uF 10 A-AERODEW) | 215 |
| 42074837 | MANGUERA DESAGÜE | DRAIN HOSE-LONG-GREY | 219 |
| 32025730 | PRESOSTATO | ELECTRONIC PRESSURE SENSOR | 225 |
| 42199994 | CAJÓN DETERGENTE | DETERGENT BOX GR/FULL/COLD/SLIM-42/6 | 280 |
| 32035483 | BOMBA DESAGÜE + FILTRO | PUMP(HANYU-12 MM) | 285 |
| 42079698 | TUBO PRESOSTATO | PRESSURE SWITCH HOSE GR(ALVA-5)BALL SYST | 295 |
| 42232943 | FRONTAL TECLADO | CON.PAN.GR.WINIA A5T0(WVD-06T0WW10U) | 400 |
| 42232943 | FRONTAL TECLADO | CON.PAN.GR.WINIA A5T0(WVD-06T0WW10U) | 401 |
| 42210213 | TECLA PROGRAMAS | PR.AD.KNOB GR/T/G.CHROME-K.BYZ-K2 | 402 |
| 22122317 | PCB COMPLETA | VEL.CARD T1- | 412 |
| 22085027 | PCB DISPLAY | VEL T0.CARD GR.AMBER | 495 |
| 42187827 | SUJECCION TAPA FILTRO BOMBA | PUMP COVER HOUSING/3 | 701 |
| 42187826 | TAPA FILTRO BOMBA | PUMP COVER/3 | 702 |
| 37022658 | MUELLE CUBA | TUB SPRING ALVA 1-C | 800 |
| 42148896 | BATEADOR | PLASTIC LIFTER 140 | 813 |
| 32025771 | NTC SENSOR | NTC TEMP. SEN.-RAST | 999 |
| 42232943 | FRONTAL TECLADO | CON.PAN.GR.WINIA A5T0(WVD-06T0WW10U) | 1102 |