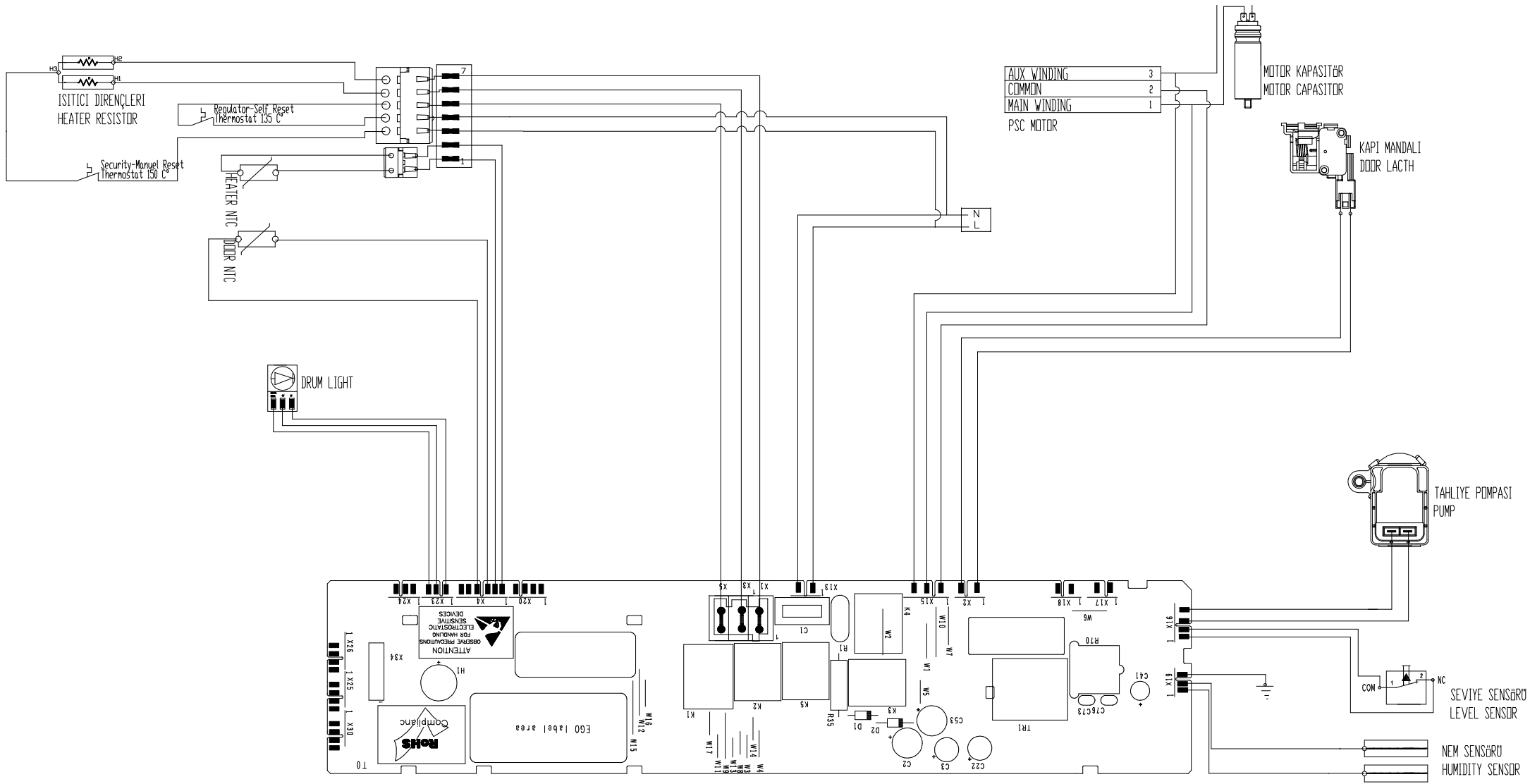


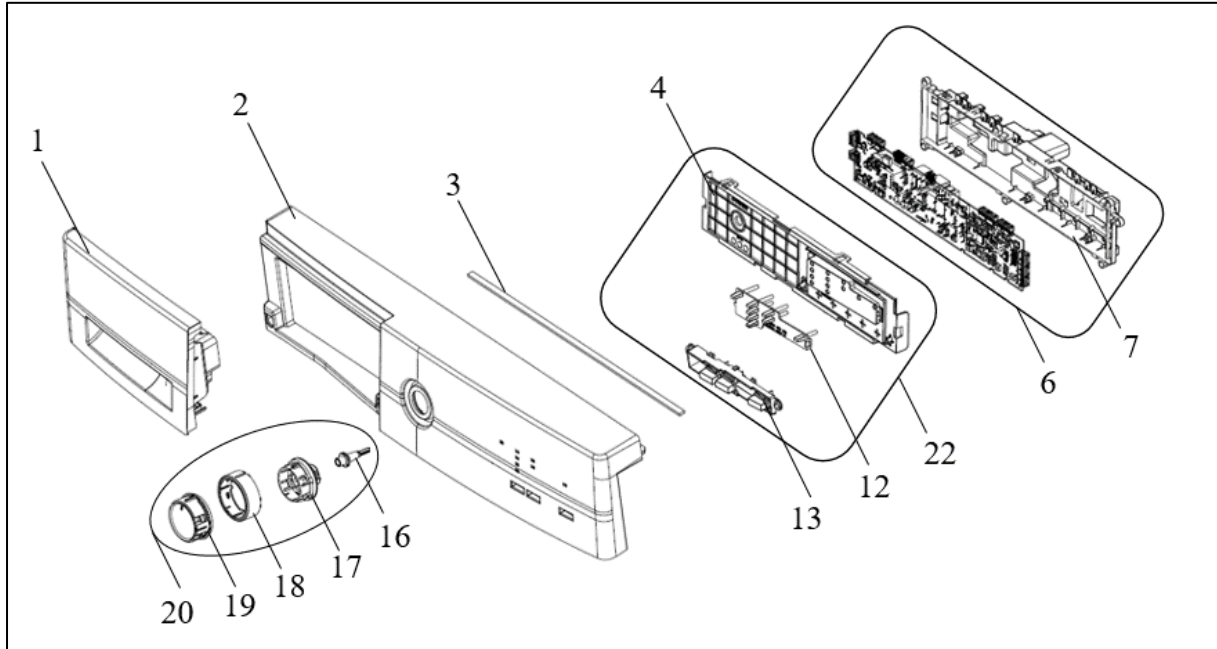
SERVICE MANUAL

DRY MACHINE

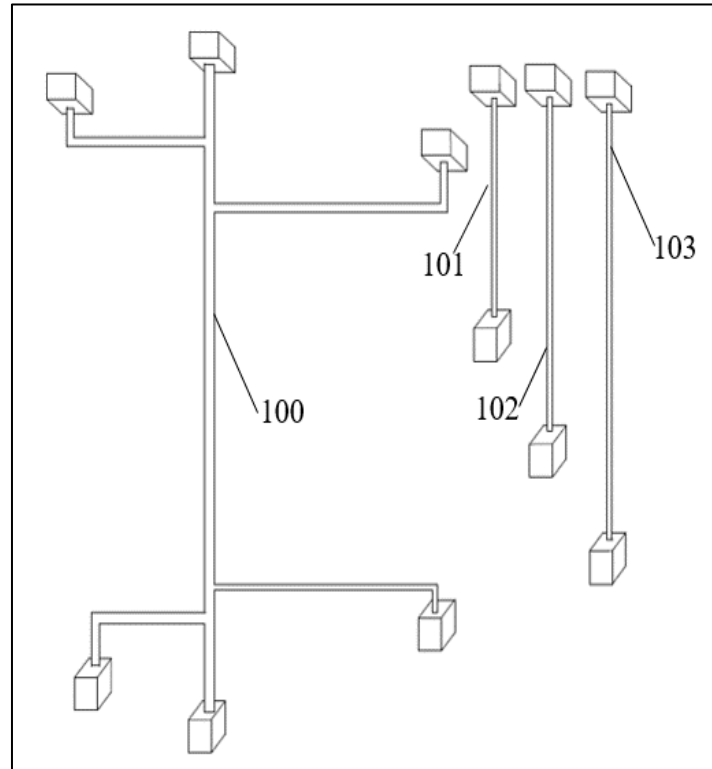
DDR-VC8B1



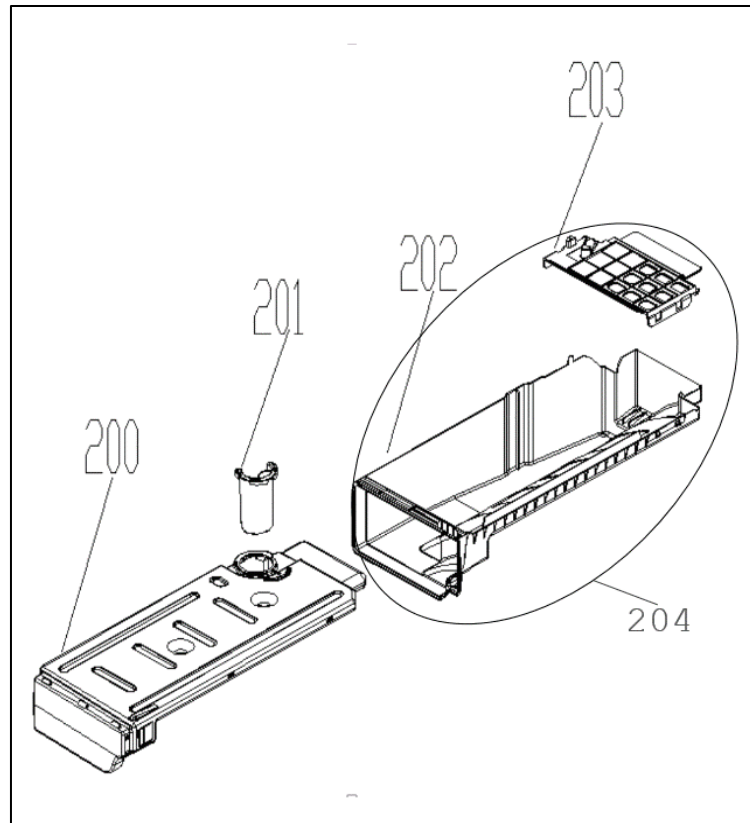
1. CONTROL PANEL PARTS



NO	PART NAME	QUANTITY
1	WATER TANK DRAWER COVER	1
2	CONTROL PANEL	1
3	CONTROL PANEL ISOLATION	1
4	PCB BOX COVER	1
6	PCB BOARD GR	1
7	PCB BOX	1
12	LIGHT GUIDE	1
13	SELECTION BUTTONS	1
16	PROGRAM SELECTION KNOB COVER	1
17	PROGRAM SELECTION KNOB BODY	1
18	PROGRAM SELECTION KNOB INS. PART	1
19	PROGRAM SELECTION SHAFT	1
20	PROGRAM SELECTION KNOB	1
22	LIGHT GUIDE GR	1
23	CONTROL PANEL GR (1-2-3-20-22)	1

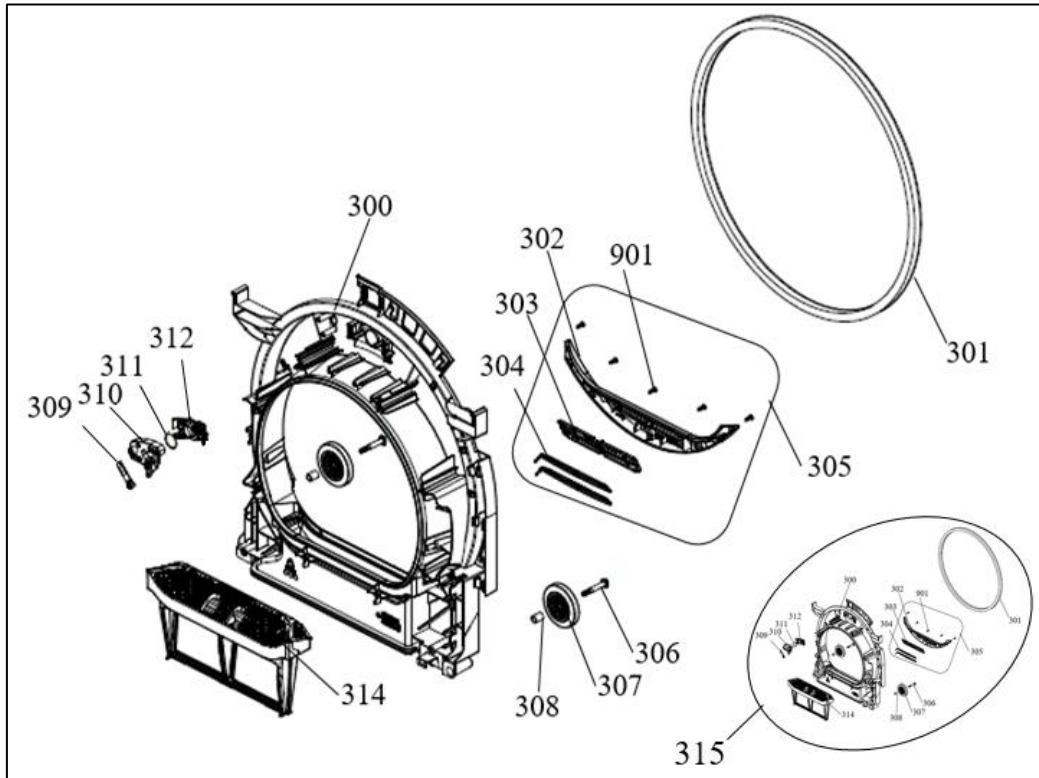
2. CABLE GROUP PARTS

NO	PART NAME	QUANTITY
100	CABLE TREE	1
101	DRUMLIGHT CABLE	1
102	DOOR LATCH CABLE	1
103	HUMMIDITY SENSOR CABLE	1
104	CABLE GR (100-618)	1

3. WATER TANK PARTS

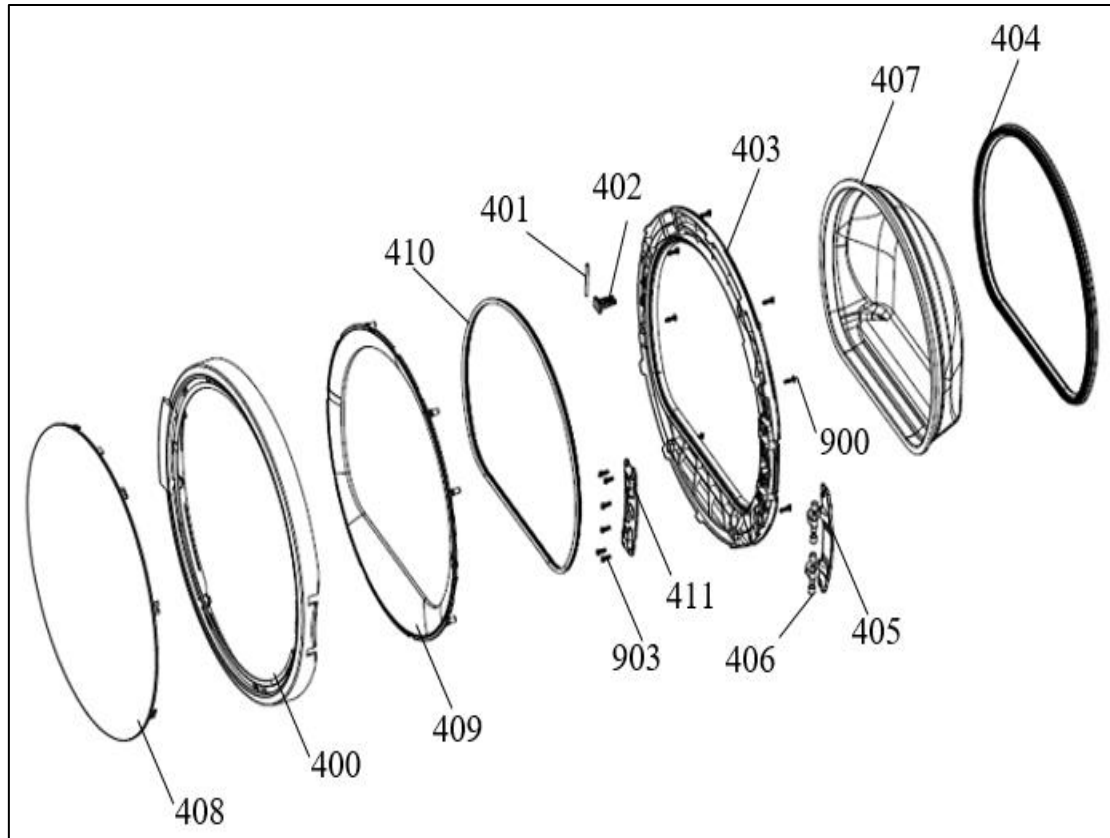
NO	PART NAME	QUANTITY
200	WATER TANK	1
201	TANK DRAIN COVER	1
202	WATER TANK HOUSING	1
203	WATER TANK HOUSING COVER	1
204	WATER TANK HOUSING GR	1

4. FRONT SHIELD PARTS

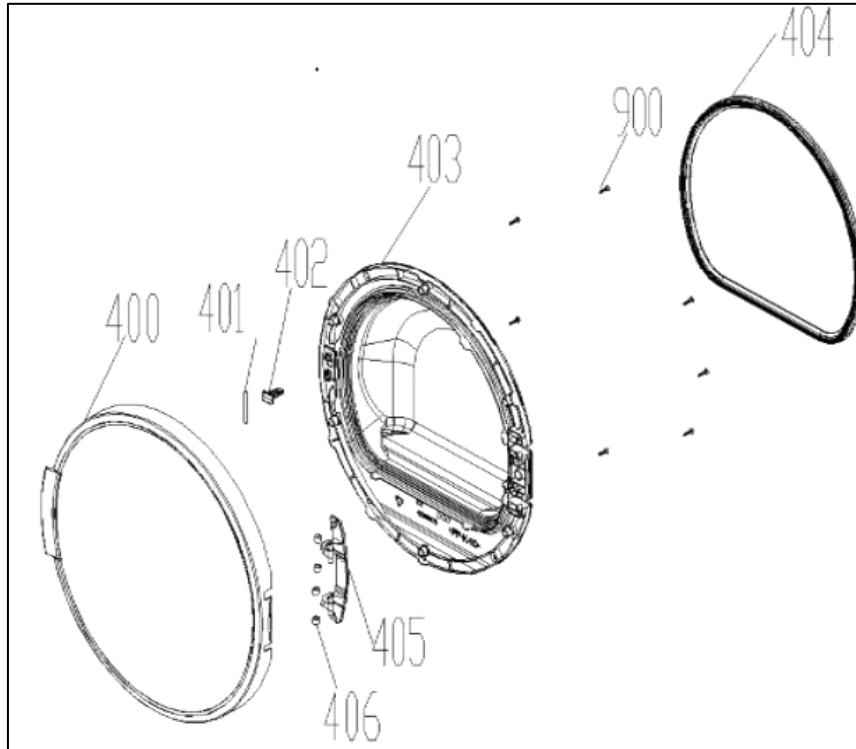


NO	PART NAME	QUANTITY
300	FRONT SHIELD	1
301	FRONT ISOLATION FOAM	1
302	HUMMIDITY SENSOR PLASTIC	1
*303	SENSOR HOLDER	1
*304	SENSOR SHEET	2
305	HUMMIDITY SENSOR GROUP (302-303 -304 - 103)	1
306	WHEEL SCREW	2
307	BEARING WHEEL	2
308	BEARING WHEEL BUSHING	2
309	DRUMLIGHT CARD	1
310	DRUMLIGHT CARD BOX	1
311	DRUMLIGHT CARD GASKET	1
312	DRUMLIGHT COVER	1
314	FILTER	1
315	FRONT SHIELD GROUP	1
901	HUMIDITY SENSOR SCREW	5

*303,304 can order with group code, pos no: 305

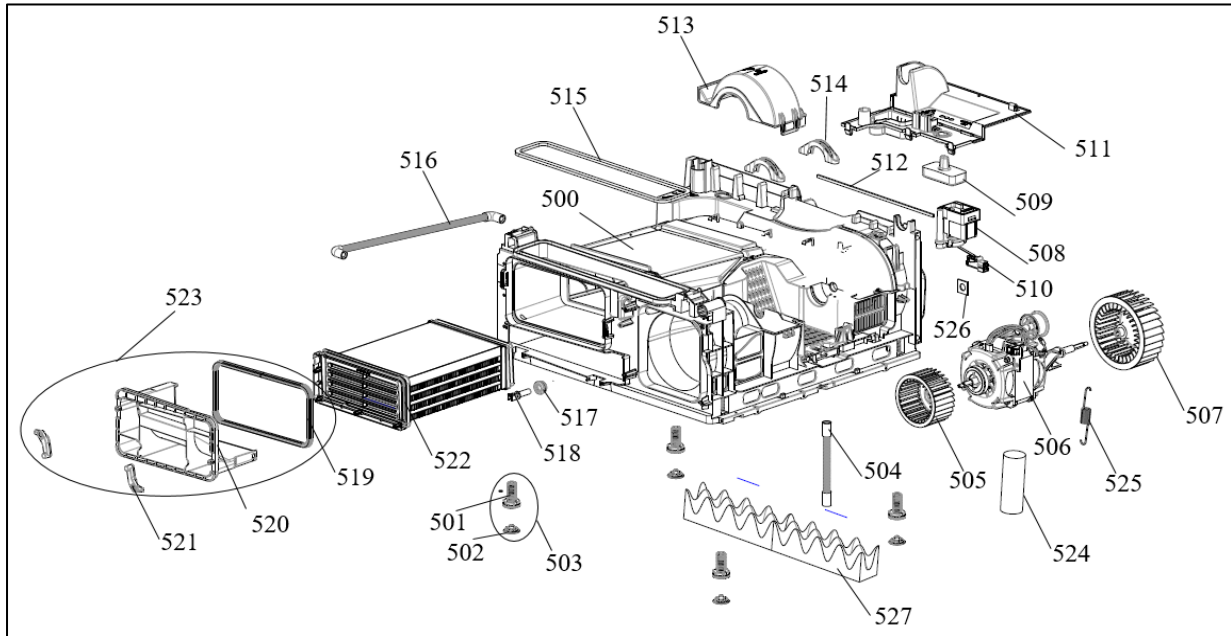
5. DOOR PARTS**5.1. Glass Door Parts**

NO	PART NAME	QUANTITY
400	DOOR OUTER PLASTIC	1
401	HINGE PIN	1
402	DOOR HOOK	1
403	INNER DOOR PLASTIC	1
404	DOOR GASKET	1
405	DOOR HINGE	1
406	DOOR HINGE BUSHING	4
407	DOOR GLASS	1
408	DOOR FRONT COVER	1
409	OUTER PLASTIC INNER FRAME	1
410	DOOR GLASS ISOLATION GASKET	1
411	DOOR HINGE SHEET METAL	1
412	DOOR GROUP	1
900	3.5 X 16 PLASTIC SCREW	11
903	4 X 12 PLASTIC SCREW	6

5.2. Plastic Door Parts

NO	PART NAME	QUANTITY
400	DOOR OUTER PLASTIC	1
401	HINGE PIN	1
402	DOOR HOOK	1
403	INNER DOOR PLASTIC	1
404	DOOR GASKET	1
405	DOOR HINGE	1
406	DOOR HINGE BUSHING	4
900	3.5 X 16 PLASTIC SCREW	7

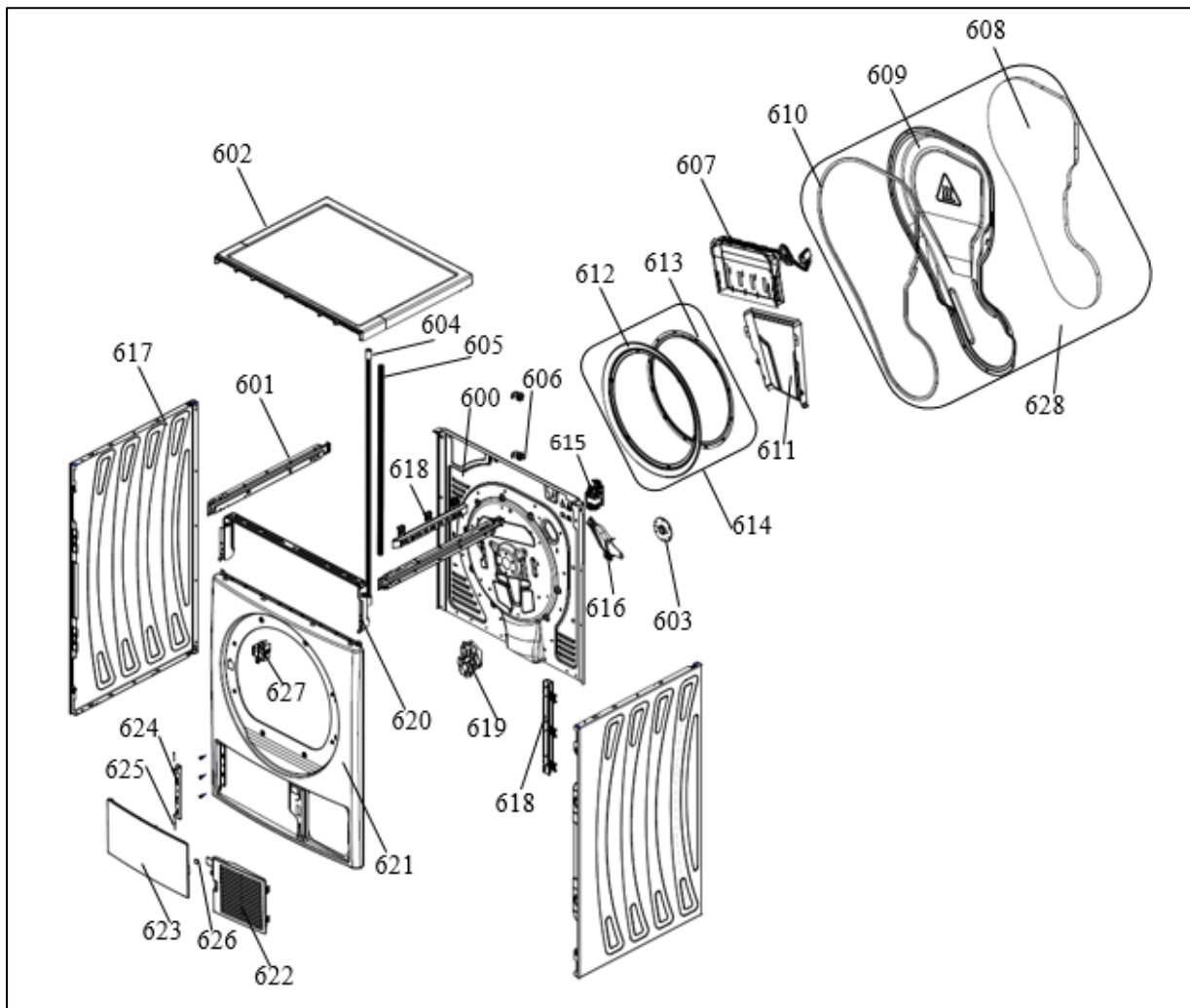
6. BASEMENT PLASTIC PARTS



NO	PART NAME	QUANTITY
500	BASEMENT PLASTIC PART	1
501	ADJUSTABLE STANDING PLASTIC	4
502	ADJUSTABLE STANDING RUBBER	4
503	ADJUSTABLE STANDING GROUP	4
504	RETURN HOSE	1
505	COOLING FAN	1
506	MOTOR	1
507	PROCESS FAN	1
508	PUMP	1
509	FLOAT	1
510	AQUA SWITCH	1
511	PUMP HOUSING	1
512	REAR PANEL ISOLATION FOAM	1
513	COOLING FAN COVER	1
514	MOTOR FIXING PLASTIC	1
515	AIR CHANNEL SEAL	1
516	SIDE HOSE	1
517	NTC RUBBER	1
518	NTC	1
519	CONDENSER DRAWER COVER GASKET	1
520	CONDENSER DRAWER COVER	1
521	CONDENSER DRAWER COVER LOCK PLASTIC	2

522	CONDENSER BOX	1
523	CONDENSER DRAWER COVER GR	1
524	CAPACITOR (11uF)	1
525	MOTOR SPRING	1
526	MOTOR ISOLATION FELT	1
527	SOUND ISOLATION FOAM	1
528	BASEMENT PLASTIC GR (500-503)	1

7. BODY PARTS

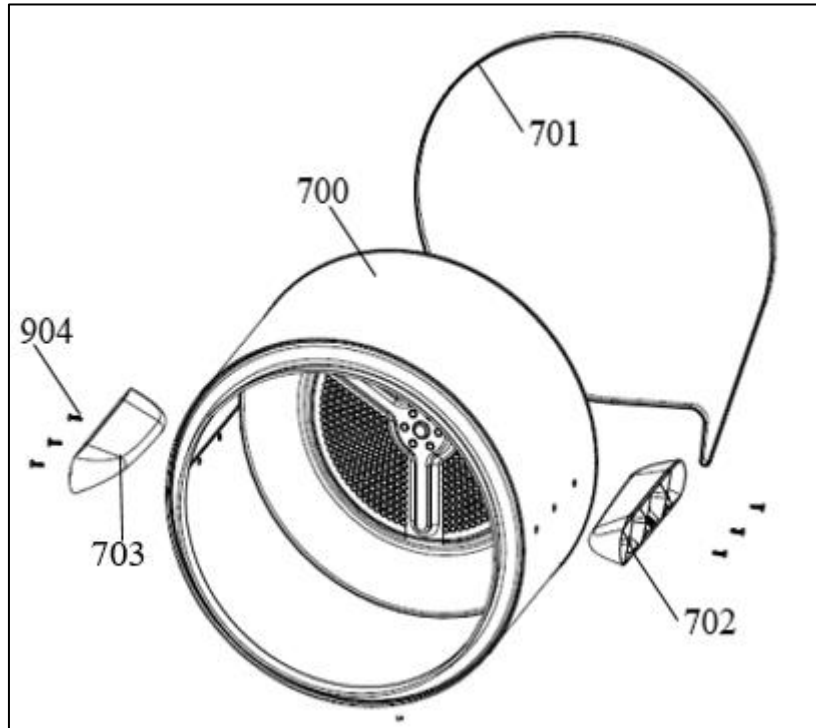


NO	PART NAME	QUANTITY
600	REAR PANEL	1
601	SIDE BRACKET	2
602	UPPER TRAY	1

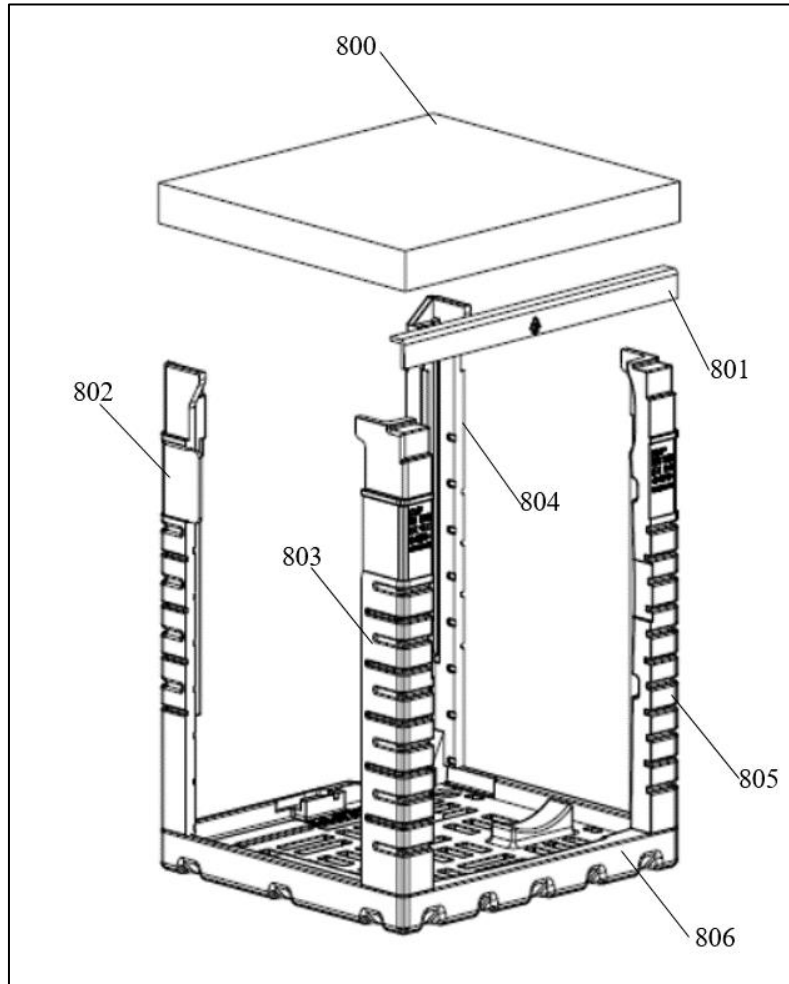
VESTEL	F1 WODAN	CUSTOMER SUPPORT
	EXPLODED VIEW	

603	REAR BEARING GR	1
604	WATER TANK HOSE	1
605	WATER TANK RETURN HOSE	1
606	HOSE HOLDER PLASTIC	2
607	HEATER	1
608	REAR COVER OUTER ISOLATION	1
*609	REAR COVER SHEET	1
610	REAR COVER INNER SEAL	1
611	AIR GUIDE BRACKET	1
612	REAR ISOLATION (SEAL&FELT)	1
613	REAR ISOLATION SHEET	1
614	REAR ISOLATION GROUP	1
615	EMI FILTER	1
616	HEATER CABLE GUIDE PLASTIC	1
617	SIDE PANEL	2
618	CABLE HOLDER PLASTIC	2
619	SOCKET HOLDER PLASTIC	1
620	TOP BRACKET	1
621	FRONT PANEL	1
622	PLINTH	1
623	PLINTH COVER	1
624	PLINTH COVER HINGE	1
625	PLINTH COVER PIM	2
626	PLINTH MAGNET	1
627	DOOR LATCH	1
628	REAR COVER GR	1
629	REAR PANEL GR (600-614-603-615-606-616)	1
630	FRONT PANEL GR (621-624-627)	1

*609 can order with group code, pos no: 628

8. DRUM PARTS

NO	PART NAME	QUANTITY
700	DRUM GR (700-702-703-904)	1
701	BELT	1
702	PLASTIC LIFTER 1	1
703	PLASTIC LIFTER 2	1
904	5 X 20 PLASTIC SCREW	6

9. PACKING GROUP PARTS

NO	PART NAME	QUANTITY
800	TOP CARTON	1
801	CORNER HARDBOARD	1
802	REAR LEFT STYROFOAM	1
803	FRONT LEFT STYROFOAM	1
804	REAR RIGHT STYROFOAM	1
805	FRONT RIGHT STYROFOAM	1
806	BOTTOM STYROFOAM	1
807	PACKAGING GR	1

Component	Description	Pos. Numbers
22012992	UPPER SUPPORT BRAKET-1	620
22012996	SIDE SUPPORT BRAKET 1/112LT	601
22013026	FR.PAN.GR PAINTED/F/SOL KAPI/KM	621
22033135	BACK PANEL CONDENSER GR	629
22033136	BACK ISOLATION GR	614
22053464	DRUM/TD/112LT/GALVANIZED/AZ150	700
22055270	SIDE PAN.GR PAIN/112LT/STRAIGHT	617
22065359	FR.PAN.GR PAINTED	630
22070401	FRONT SHIELD 100-112LT (TD)	315
22091136	BACK ISOLATION/YIKANMIÅž	613
22102166	HUMIDITY SENSOR GR.	305
22102638	BACK PANEL-COND. TANK ÅœST- NTC BANT GR	600
22119668	PACKAGE GROUP/112LT-113LT(SHRINK)-20 DNS	807
22120468	REAR COVER(KM) DAEWOO	628
22124332	E.CARD F1-200560200-v04h_rev1	6
32026462	DRUM LIGHT_SAMSUNG LED	309
32031600	CAPACITOR(11uF -A SINIFI-M8)KEMET	524
32031612	HEATER(1600-900 W/2 TH-1 NTC)IRCA	607
32031614	PUMP(B13-6AA11110/33MM IMP)18MM-HANYU	508
32031615	SENSOR(D459-YGAM-60/18-35 cN)CHERRY	510
32031617	NTC(DOOR-12K) COMMON COD	518
32033446	DOOR LATCH CABLE-TELESET	102
32033641	DRUM LIGHT CABLE-TD	101
32033812	E.FILT.CX(0.1UF)CY(2X27NF)R(1MO)16A-ADEV	615
32034494	MOTOR(7/8/9KG-KON.100/112L)45MM-V0AL-WEL	506
32034791	HUM SENSOR MNFT CBL 7-8-9KG(FL BNT)TLST	103
32035780	DOOR LATCH-SPRING2-(MV-438-5(2)A MS)-MFL	627
32039146	CAB.GR(8/9KG_112LT KOND)-V0-19	104
37016359	SCREW,P,TSB,4X14,F,INOX	901
37016360	SCREW,P,RTSB,4X12,F,ST,A3B,SERRATED	903
37029062	PLINTH PIM/DRYER	625
37029179	CONDENSER CASSETTE	522
37030031	SCREW,P,TSB,7X50,F,ST,A3B,PT,REDÅœKS	306
37030263	REAR BEARING	603
37031309	AIR ROUTING BRAKET (KM)	611
37033886	WHEEL BURCU 17,8	308
37034740	MOTOR SPRING 87N-2,5MM	525
42074676	NTC GASKET	311
42161559	SOCKET HOLDER PLASTÅ°C(DRYER)	619
42161564	PCB BOX/F SERIES(DRYER)	7
42161591	HOSE HOLDER PLASTIC (TD)1	606
42161595	DRUM LIGHT PCB CARD BOX(DRYER)	310
42161596	DRUM LIGHT PIPE(DRYER)	312
42161597	MOTOR FÅ°XÅ°NG PLASTÅ°C	514
42161599	FRONT SHIELD/WÅ° DRUM LIGHT	300
42161601	PUMP HOUSING	511

42161602 COOLING BLOWER COVER	513
42161605 HUMIDÄ°TY SERSOR PLASTÄ°C	302
42161612 COOLING Ä°R FAN BLADE	505
42161615 PROCESS Ä°R FAN GROUP	507
42163360 PLINTH/DRYER	622
42163361 PLINTH COVER/DRYER	623
42163362 PLINTH HINGE/DRYER	624
42163375 WATER TANK HOSE	604
42163376 WATER TANK RETURN HOSE	605
42163389 FLOAT(EPS)	509
42163417 UPPER TRAY GROUP/112LT	602
42164399 BELT(7-8-9KG 100-112LT)7PH2012-HUTCHIN	701
42164806 NTC RUBBER TD	517
42174061 FAN HOUSING DRAIN HOSE	504
42174099 DRUM ROLLER GROUP	307
42174185 SIDE HOSE/112C	516
42174187 CONDENSER CASSETTE COVER GR.112LT	523
42174188 WATER TANK HOUSING GR 112 LT	204
42174190 DRUM REAR ISOLATION GROUP	612
42183097 CABLE HOLER PLASTIC-2(DRYER)	616
42204991 FILTER CASSETTE GR (DIAMOND)-WHÄ°TE-(PPT20	314
42209501 WATER TANK GROUP 112LT	205
42209504 CON.PAN.GR.DAEWOO WF1A(DDR-VC8B1)	23
42213021 FLOOR PLASTIC CON.GR/112LT_FRONT G(GF30/	528
42213065 PORTHOLE GROUP (D10-OPAK/KM) DAEWOO	412
47002042 CORNER CARDBOARD	801
47014895 PLINTH MAGNET/DRYER	626
47014911 BASEMENT PLASTIC AIR CHANNEL FOAM	515
47014912 BASEMENT PLASTIC REAR PANEL ISOLATION FO	512
47015082 SOUND INSULATION FOAM	527
47015083 MOTOR SHAFTFELT	526
47016347 HUMIDITY SENSOR ISOLÄ°ON FOAM	316
47016909 BACK COVER OUTER ISOLATION SPONGE	608
47017742 DRUM FRONT ISOLATION GROUP-2	301
47018087 BACK COVER INNER ISOLATION FOAM-50 SH	610
52238429 BOTTOM STYROFOAM/112LT CONDANSER (TD)	806
52238844 TOP CARTON/112-113 LT/C DALGA	800
52283517 FRONT STYROFOAM RIGHT-F.SER.TD-RIGHT/20	805
52283518 FRONT STYROFOAM-F.SER.TD-LEFT/20 DNS	803
52283519 REAR STYROFOAM-F.SER.TD-RIGHT/20 DNS	804
52283520 REAR STYROFOAM-F.SER.TD-LEFT/20 DNS	802