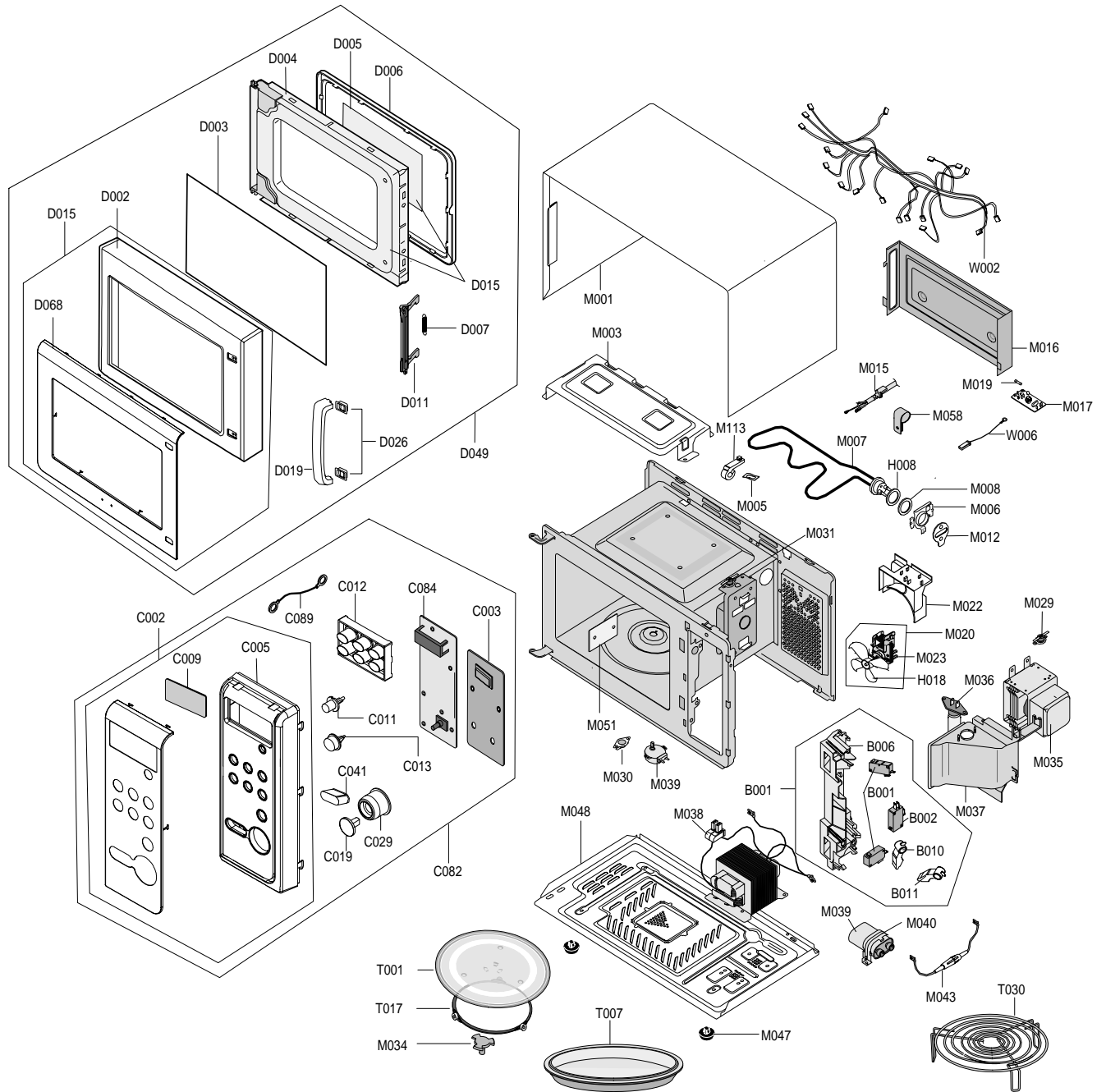


7. Exploded Views and Parts List

7-1 Exploded Views



7-2 Main Parts List

No.	Code No.	Description	Specification	Q'ty	Remark
B001	3405-001034	SWITCH-MICRO	125/250VAC,16A,200GF,SPST-N	2	
B002	3405-001032	SWITCH-MICRO	125/250VAC,16A,200GF,SPDT	1	
B006	DE72-00137A	LATCH-BODY	NC2000(0.6/0.8/1.2),PP,-,-,-,	1	
B010	DE66-00093A	LEVER-SWITCH(A)	NC2000,PP(TH53),-,-,-,-,	1	
B011	DE66-00094A	LEVER-SWITCH(B)	NC2000,PP(TH53),-,-,-,-,	1	
B018	DE96-00120B	ASSY BODY LATCH	M1717N,NC2000(HANDLE)	1	
M001	DE64-00350Z	PANEL-OUTER	M187AST,C/STEEL,SECC,T0.5,-,-,	1	
M003	DE61-00143A	BRACKET-UPPER	MW850WA,SECC,T0.5,-,-,-,NC	1	
M005	DE61-70060A	SPRING-PLATE	-,SK-5,T0.5,-,-,-,-,-,-,-	1	
M006	DE74-80062A	STOPPER-HEATER	3RD-W,SECC,T0.8xW70xL70,-	1	
M007	DE47-00004A	HEATER-GRILL	SHG-2733E,-,-,1100W(1080W),	1	
M008	DE63-20017A	GASKET-HEATER	-,BRASS,T1.5,OD30.5,ID22.5	1	
M012	DE61-50576A	BRACKET-HEATER	-,STS430,T0.5,W70,L70,-,-	1	
M015	DE39-20058L	ASSY POWER CORD	CE2713/XEF,1.5SQ,230V50H	1	
M016	DE71-60451A	COVER-BACK	3RD-0.7,SECC,T0.5,W115,L332,-	1	
M017	DE96-00011A	ASSY NOISE FILTER	SN-3WUA,250V15A,3W 15A	1	
M019	3601-001197	FUSE-CARTRIDGE	250V,15A,SLOW-BLOW,CERAMI	1	
H008	6031-001424	WASHER-PLAIN	PTFE,-,ID22.2,OD28,T1.7,WHT	1	
H018	DE31-90057A	BLADE-FAN	PP,T1.5,-,-,3RD-W,-,-,-	1	
M020	DE96-00031A	ASSY-MOTOR FAN	SMF-3RDEA,230V50HZ,2400RP	1	
M022	DE71-00148A	COVER-BLOWER	MW850WA,PP,T1.5,-,-,-,NTR,N	1	
M023	DE31-10184A	MOTOR FAN	SMF-3RDEA,230V50Hz,2400rpm,3rd	1	
M029	DE47-20009A	THERMOSTAT	PW2N-520PB,160/60,250V/7.5A,H	1	MGT-TCO
M030	DE47-20010A	THERMOSTAT	PW-2N(120/60)187Y,250V7.5A,12	1	CAV-TCO
M031	DE47-00002B	THERMOSTAT	PW2N,-,-,100,110,-,-,-,187H,3	1	GRL-TCO
M034	DE67-00140A	COUPLER	NC2000(0.6~0.8),PPS(ESS840),-,3G	1	
M035	OM75P(31)ERHN	ASSY-MAGNETRON	OM75P(31)ERHN	1	
M036	4713-001046	LAMP-INCANDESCENT	240V,104mA,25W,ORG,-,-	1	CV/AIR
M037	DE71-60457B	COVER-AIR	3RD-0.7(BTM),PP,-,-,-,-,-	1	
M038	DE26-00096A	TRANS H.V	SHV-EURO2-1,230V,50Hz,2350V,3.	1	
M039	2501-001016	C-OIL	950nF,2.1KV,BK,35x54x80,20mm	1	
M040	DE61-00139A	BRACKET-HVC	NC2000,SECC,T0.8,-,-,-,0.6/0	1	
M043	DE91-70061B	ASSY-H.V.FUSE	THV060T-0750-H,5KV/0.75A,R	1	
M047	DE61-40066A	FOOT	-,PP,-,BLK,-,-,-	2	
M048	DE80-00023A	BASE-PLATE	MW850WA,SGCC1,T0.6,-,-,NC2000	1	
M049	DE31-10154A	MOTOR SYNCHRONOUS	M2HJ49ZR02,ST-16,50/60	1	
M051	DE71-00159A	COVER-CEILING	CN2835,MICA SHEET,T0.3,W11	1	
M058	DE65-20014A	CABLE CLAMP	-,,-,NY-66,-,DA-6N	1	P-CORD
M113	DE61-30008A	SUPPORT-HEATER	ALUMINA,-,T12,CE745G,-,	1	
T001	DE74-20102E	TRAY-COOKING	NC 0.8,GLASS,T6,890G,-,-,-,	1	
T007	DE97-00108B	ASSY-TRAY BROILER	CE2713T,3RD-O.7,NEW,-	1	
T017	DE97-00193B	ASSY-GUIDE ROLLER	NC2000 0.8,T2*P1198(14	1	
T030	DE74-70071D	RACK-WIRE	MSWR10,PI3,0.7/NC2000,D230,H85	1	
W002	DE96-00206A	ASSY-WIRE HARNESS A	CE2733N,230V50HZ,NEW	1	
W006	DE39-40409A	WIRE HARNESS-E	230V50HZ,M9G45,CTW,-,-,-	1	H/EART

7-3 Control Parts List

No.	Code No.	Description	Specification	Q'ty	Remark
C002	DE94-01105B	ASSY CONTROL-PANEL	-,CE287AST/XEC,NATURA	1	
C003	RCA-K2LED1-77	ASSY PCB PARTS	CE287AST/XEC,230V50HZ	1	
C005	DE64-01150A	CONTROL-PANEL	M187ST/CE287ST,ABS(HG0760S)	1	
C009	DE64-01151A	WINDOW-DISPLAY	M187ST/CE287ST,SAN(CR5381	1	
C011	DE64-01152A	BUTTON-SELECT(A)	M187ST/CE287ST,ABS(HG07	1	
C012	DE64-01153A	BUTTON-SELECT(B)	M187ST/CE287ST,ABS(HG07	1	
C013	DE64-01154A	BUTTON-SELECT(C)	M187ST/CE287ST,ABS(HG07	1	
C019	DE64-01156A	BUTTON-START	M187ST/CE287ST,ABS(HG0760S)	1	
C029	DE64-01157A	KNOB-DIAL	M187ST/CE287ST,ABS(HG0760S),-	1	
C041	DE64-01155A	BUTTON-CANCEL	M187ST/CE287ST,ABS(HG0760S)	1	
C082	-	ASSY CONTROL-BOX	230V60HZ,CE287AST/XEC,N	1	S.N.A
C084	DE96-00377A	ASSY-KEY MODULE	DKM-187AST,KEY-MODULE	1	
C089	DE39-40673D	WIRE HARNESS-H	M187.CE287AST,GROUND,-,-,	1	
C133	DE64-01147B	CHASSIS-PANEL	CE287AST/XEC,STS304,T0.5,-	1	
D002	DE64-01145A	DOOR-A	M187AST/CE287AST,ABS(HG0760),-,-,	1	
D003	DE64-01146A	SCREEN-DOOR	CE287ST,SAN(CR5381),-,-,-,-,	1	
D004	DE94-00351B	ASSY DOOR-E(COATING)	MW850WA,BLK-COATING	1	
D005	DE64-00221E	FILM-DOOR	-,CE2877N,PET,T0.15,W143,L264,	1	
D006	DE64-40008B	DOOR-C	-,PP,CE745G,-,-,-,BLK,-	1	
D007	DE61-00198A	SPRING-KEY	M1877,HSWR,PI0.7,-,D6,23 1/4,	1	
D011	DE64-00211A	DOOR-KEY	NC2000(0.6/0.8/1.2),PP,-,BLK,-,	1	
D015	DE94-01104A	ASSY DOOR-SUB	M187AST/XEC,NATURAL-STS(A)	1	
D019	DE64-01149A	HANDLE-DOOR	M187ST/CE287ST,ABS(HG0760S),	1	
D049	-	ASSY DOOR	CE287AST/XEC,NATURAL STS A,EUR	1	S.N.A
D068	DE64-01148A	CHASSIS-DOOR	CE287ST,STS430,T0.5,-,-,STA	1	

S.N.A : SERVICE NOT ASSEMBLY

7-4 Standard Parts List

Code No.	Description	Specification	Q'ty	Remark
6006-001171	SCREW-ASSY MACH	WS,PH,+,M4,L8,NI PLT	2	BKT-HEATER
6006-001170	SCREW-ASSY TAPP	WS,TH,+,M4,L10,ZPC(YEL)	1	N/FILTER
6006-001170	SCREW-ASSY TAPP	WS,TH,+,M4,L10,ZPC(YEL)	1	P-CORD
6006-001174	SCREW-ASSY TAPP	WE,TH,+,M4,L12,ZPC(YEL)	4	OUT-PANEL
6006-001176	SCREW-ASSY TAPT	WT,PH,+,M4,L8,ZPC(YEL)	1	BOTT-TCO
6006-001176	SCREW-ASSY TAPT	WT,PH,+,M4,L8,ZPC(YEL)	1	CVT-TCO
6006-001176	SCREW-ASSY TAPT	WT,PH,+,M4,L8,ZPC(YEL)	1	D-MOTOR
6006-001176	SCREW-ASSY TAPT	WT,PH,+,M4,L8,ZPC(YEL)	2	MGT-TCO
6006-001176	SCREW-ASSY TAPT	WT,PH,+,M4,L8,ZPC(YEL)	1	-
6002-000231	SCREW-TAPPING	TH,+,2S,M4,L12,ZPC(YEL),SM20C	2	B-LATCH
6002-000231	SCREW-TAPPING	TH,+,2S,M4,L12,ZPC(YEL),SM20C	3	B-PLATE
6002-000231	SCREW-TAPPING	TH,+,2S,M4,L12,ZPC(YEL),SM20C	1	BKT-UPPER
6002-000231	SCREW-TAPPING	TH,+,2S,M4,L12,ZPC(YEL),SM20C	1	C-BLOWER
6002-000231	SCREW-TAPPING	TH,+,2S,M4,L12,ZPC(YEL),SM20C	1	CON-BOX
6002-000231	SCREW-TAPPING	TH,+,2S,M4,L12,ZPC(YEL),SM20C	1	COVER-AIR
6002-001321	SCREW-TAPPING	PWH,+,2S,M5,L10,ZPC(YEL)	4	HVT
6002-001321	SCREW-TAPPING	PWH,+,2S,M5,L10,ZPC(YEL)	2	MGT
6002-001325	SCREW-TAPPING	TH,TORX,2S,M4,L12,ZPC(YEL)	2	C-BACK
6002-001355	SCREW-TAPPING	TH,+,2S,M4,L12,NI PLT,SWRCH18A,-	1	P/OUTER
6002-000643	SCREW-TAPPING	TH,+,2S,M4,L10,ZPC(YEL),SWRCH1	2	-
6002-000630	SCREW-TAPPING	PH,+,2S,M3,L8,ZPC(YEL),SWRCH18	1	EARTH
6002-000630	SCREW-TAPPING	PH,+,2S,M3,L8,ZPC(YEL),SWRCH18	7	PCB
DE74-10011A	SEAL-WASHER	-,TK721(AG+CU),-,T0.05,ID6.5,-,-	1	-