

S/M No.:

Service Manual

Refrigerator

RF-650NT..

RF-650NW..

RN-650NT..

RN-650NW..



FACTORY MODEL : FRP-512..



FACTORY MODEL : FRP-513..

RF-651NT..

RF-651NW..

RN-651NT..

RN-651NW..



FACTORY MODEL : FRP-514..

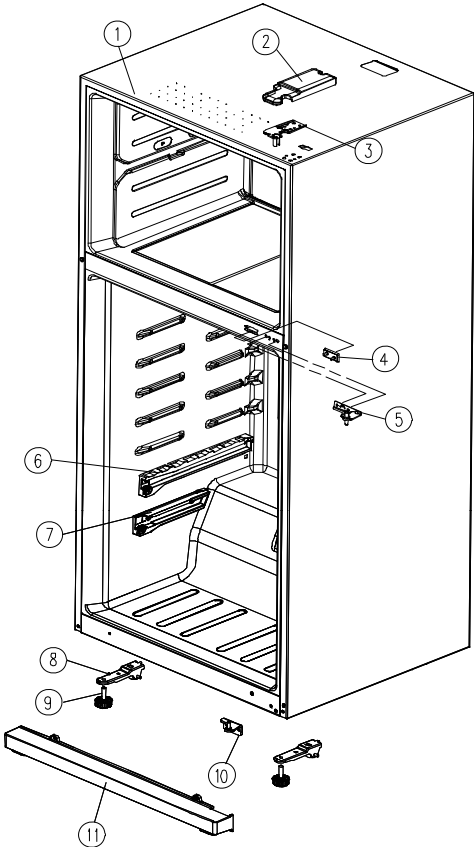


FACTORY MODEL : FRP-515..

✓ Caution

In this manual, some parts can be changed for improving their performance without notice. So, If you need the latest parts information, please visit and refer to PPL (Parts Price List) in Service Information Center. (<http://svc.dwe.co.kr>)

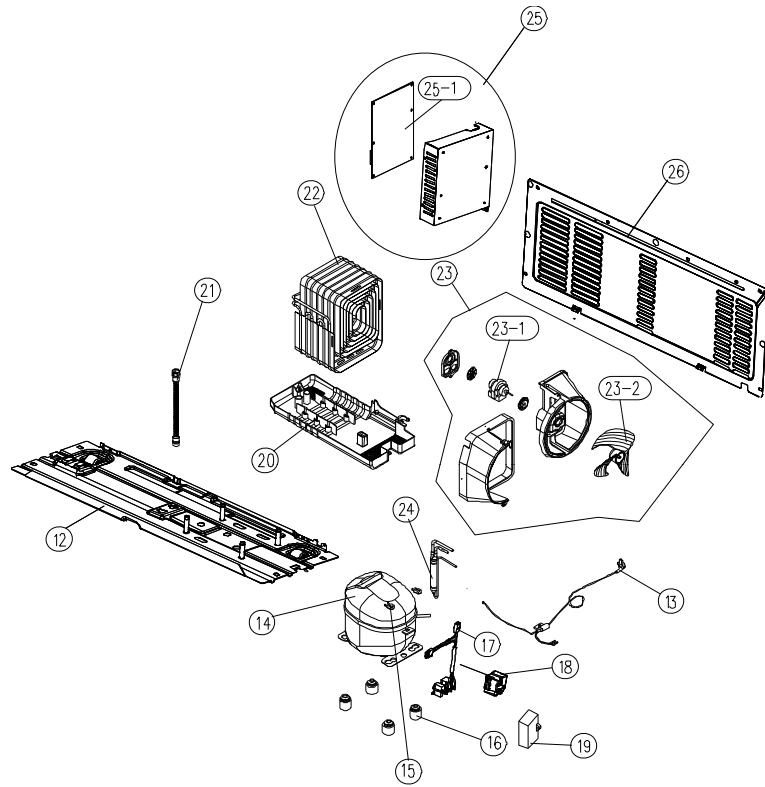
D
V
E
V
O
O



NO	PART-CODE	PART NAME	SPEC.	Q'ty
1	3000066310	ASSY CAB URT	FRP-510,DIGITAL	1
2	3001445400	COVER *T HI	PP J-370A, FRP-512	1
3	3012935400	HINGE *T AS	SH1 2.6T, FPR-512	1
4	3018100010	SWITCH DR	2 BUTTON/4P,DSD-5	1
5	3012935500	HINGE *M AS	SH1 4T MFZN FRP-512	1
6	3012543200	GUIDE C/C *L AS	FRP-512, GUIDE+ROLLER	1
	3012543300	GUIDE C/C *R AS	FRP-512, GUIDE+ROLLER	1
7	3012543400	GUIDE V/CASE *L AS	FRP-512, GUIDE+ROLLER	1
	3012543500	GUIDE V/CASE *R AS	FRP-512, GUIDE+ROLLER	1
8	3016502800	CASTER *F AS	FRP-512, T2.6	2
9	3012105101	FOOT ADJ AS	PP(BLACK)	2
10	3012935600	HINGE *U AS	SH1 5T, FRP-512	1
11	301149A500	COVER CAB BRKT *F	FRP-512, PP J-370A	1

- Some parts can be changed for improving their performance without notice.

Date	Amendment Note

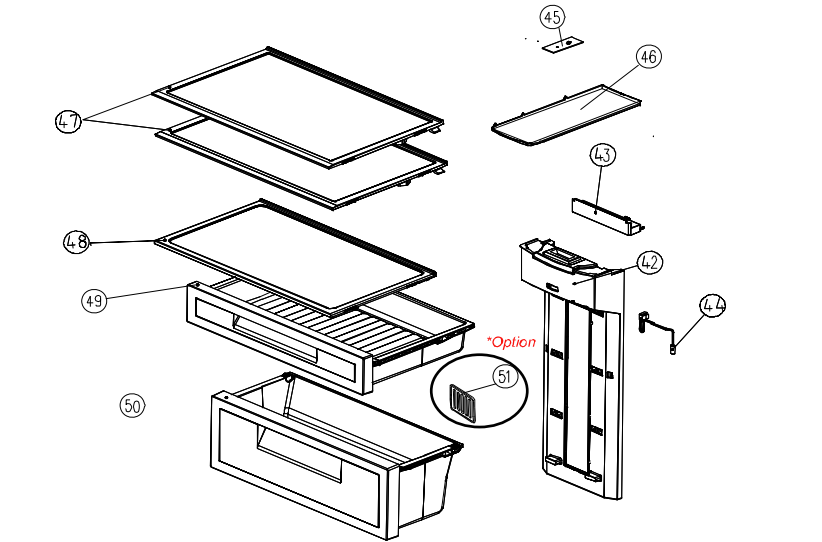
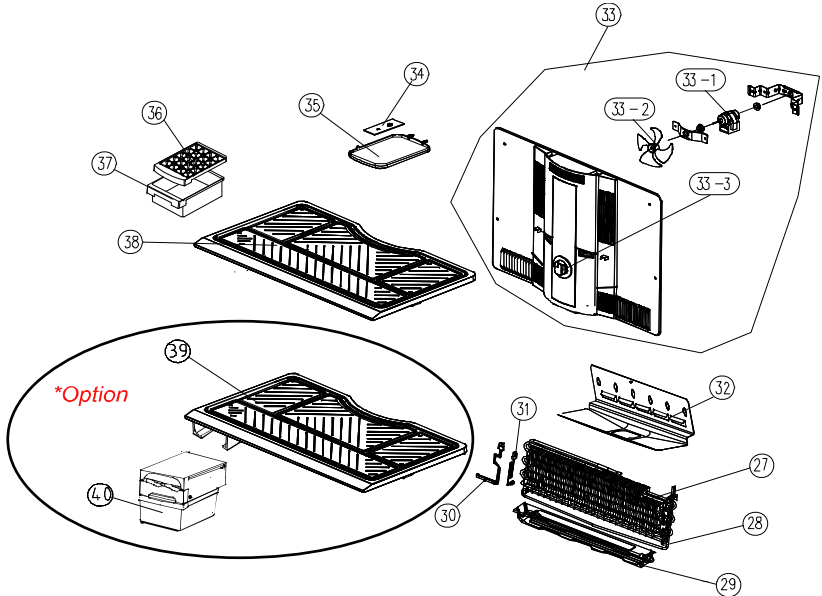


NO	PART-CODE	PART NAME	SPEC.	Q'ty
12	3010345201	BASE COMP AS	FR-B512FH	1
13	OPTION	CORD POWER AS	-	1
14	3956126S51	COMPRESSOR	HPL26YH-5-K, 220-240V/50HZ	2
	3956112250		DG125E11RAW5 220-240V/50HZ	1
	3956183Q5B		MK183Q-L2UB/DW2 220-240V/50HZ	1
	3953158K20		YX58LHE2 127V/60HZ	1
	3953158K30		YF58LHE3 110V/60HZ	1
	3956162D4A		MK162B-LIUA 220V/60HZ	1
15	3016007000	SPECIAL WASHER	SBHG T0.6	4
16	3010101600	ABSORBER COMP	R-134a	4
	3010101480	ABSORBER COMP AS	R-600a	4
17	3018134300	SWITCH P RELAY AS	DW HPL26YH	1
	3018129650		Panasonic(R600a)	1
	3018130620		S/S MK183Q	1
	3018130640		DW YX58LHE2/3	1
	3018130650		S/S MK162B	1
18	3811400503	COVER RELAY	DW HPL26YH / DW YX58LHE2/3	1
	3811402100		S/S MK183Q / MK162B	1
	3001410000		Panasonic DG125E11RAW5	1
19	3016406100	CAPACITOR RUN	400V 5UF /HPL26YH, MK183Q	1
	3016405800		350V 4UF/Panasonic(R600a)	1
	3016405900		350V 5UF S/S MK162B	1
	3016405020		250V 12UF DW YX58LHE2/3	1
20	3011190910	CASE VAPORI AS	FRP-512	1
21	3012513950	HOSE DRN B	PVC	1
22	3014467230	PIPE WICON AS	FRP-512	1
23	3018410140	MOUTHBELL AS	FR-B512FH(DC12V)	1
23-1	3015914110	MOTOR C FAN	D4612AAA27 12V 1000RPM	1
23-2	3011836300	FAN	ABS(OD150)	1
24	3016808100	DRYER AS	SBS 12G	1
25	3010576900	BOX M/PCB AS	FRP-512 BOX+M-PCB	1
25-1	30143JC060	PCB MAIN AS	FR-1, 197X122-1.6T	1
26	3012407000	GRILLE AS	GRILL+SEAL	1

- Some parts can be chaged for improving their perfomance without notice.

Date	A mendment Note

Freezer / Refrigerator Compartment

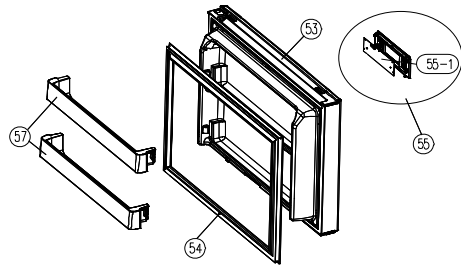


NO	PART-CODE	PART NAME	SPEC.	Q'ty
27	3017065500	EVA AS	FRP-510	1
	3017068300		FRP-510(R600a)	1
28	3012823100	HEATER SHEATH AS	230V 200W R-600a	1
29	301281010	HEATER D AS	230V 250W R-134A	1
30	3017202700	FUSE TEMP AS	FR-B512FH	1
	3017203220		FR-510C(R600A)	1
31	3012767700	HARNESS D SENS	NBC-K43-D24(PBN-43) R-134a	1
	3012767710		GERNERAL (OD8) TPYE R-600a	1
32	3012530800	GUIDE DRN	GL TO.4X550X240	1
33	3018927610	LOUVER F AS	DC 12V	1
	3018927630		DC 12V +DECO	1
33-1	3015919500	MOTOR F FAN AS	DC12V	4
33-2	3011802700	FAN AS	FAN(OD110)+CLAMP	4
33-3	3013415000	KNOB F CONTL	HIPS, HI450	1
34	30143JC210	PCB FRE LED AS	4-LED FR-4 51X40-1.6T	1
35	3015519900	WINDOW F LAMP	FRP-512, PS MF-1-301	1
36	4010G56012	CASE ICING	Option	1
37	4017299112	CASE ICE	Option	1
38	3017853400	SHELF F	FRP-512, PS MF-1-301	1
39	3017859400	SHELF F AS	SHELF+FRAME I/CASE	1
40	3010518900	BOX ICE	GPPS	1
	3001443900		FRP-512	1
42	3001443900	COVER M/F DUCT AS	GPPS+DECO	1
	3011660700		FRP-512 HIPS HI450	1
43	3012542500	GUIDE DRN *O	FRP-512 HIPS HI450	1
44	3014810300	SENSOR R AS	HARNESS+SENSOR FRP-512	1
45	30143JC220	PCB REF LED AS	6-LED FR-4 172X20-1.6T	1
46	3015520000	WINDOW R LAMP	FRP-512, PS MF-1-301	1
47	3017853600	SHELF R AS	PP+GLASS INJECTION	2
	3017853610		PP+GLASS INJECTION+DECO	
48	3017853300	SHELF C/C AS	PP+GLASS INJECTION FRP-512	1
49	301119A800	CASE CHILD AS	FRP-512	1
50	301119AG00	CASE VEGETB AS	FRP-512	1
51	301119AC00	CASE DECO	FRP-512 / J370A	1

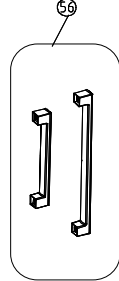
- Some parts can be chaged for improving their performace without notice.

Date	A mendment Note

F-DOOR

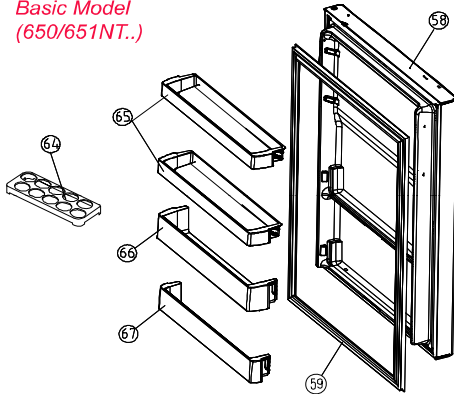


651.. Model Only.

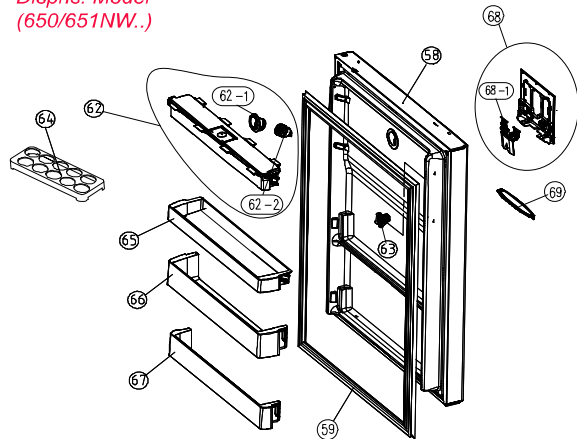


R-DOOR

Basic Model
(650/651NT..)



Dispns. Model
(650/651NW..)



NO	PART-CODE	PART NAME	SPEC.	Q'ty			
				650NT	650NW	651NT	651NW
53	300009C700	ASSY F DR	TITANIUM PCM	1	1	X	X
	300009C710		TITANIUM ELLIO	1	1	X	X
	300009C720		M/WHITE EMBO	1	1	X	X
	300009C730		TITANIUM VCM	1	1	X	X
	30100B5300		TITANIUM PCM	X	X	1	1
	30100B5310		TITANIUM ELLIO	X	X	1	1
	30100B5320		M/WHITE EMBO	X	X	1	1
	30100B5330		TITANIUM VCM	X	X	1	1
54	3012320200	GASKET F DR AS	PVC, GRAY	1	1	1	1
55	3014249700	PANEL *F CONTL AS	FRP-512	1	1	1	1
55-1	30143JC160	PCB FRONT AS	2010 510 PCB FRONT	1	1	1	1
56	3012655900	HANDLE PAKG AS	NO PAINT	X	X	1	1
57	3019064300	POCKET F	PC MF-1-301 FRP-512	2	2	2	2
58	300009C850	ASSY R DR	TITANIUM ELLIO	1	X	X	X
	300009C860		M/WHITE EMBO	1	X	X	X
	300009C870		TIANIUM VCM	1	X	X	X
	300009C880		TITANIUM ELLIO	X	1	X	X
	300009C890		M/WHITE EMBO	X	1	X	X
	300009C8A0		TIANIUM VCM	X	1	X	X
	300009C840		TITANIUM ELLIO	X	X	1	X
	300009C8B0		M/WHITE EMBO	X	X	1	X
	300009C8C0		TIANIUM VCM	X	X	1	X
	300009C8D0		TITANIUM ELLIO	X	X	X	1
	300009C8E0		M/WHITE EMBO	X	X	X	1
	300009C8F0		TIANIUM VCM	X	X	X	1
59	3012320300	GASKET R DR AS	PVC, GRAY	1	1	1	1
62	3018202100	TANK WATER AS	FRP-513	X	1	X	1
62-1	3014008800	PACKING DISPNS HOLDER	SILICON KCC0160 FRP-516	X	1	X	1
62-2	3015407000	VALVE WATER	FRP-513	X	1	X	1
63	3015206400	STOPPER W/TANK *R	ABS SG0760, FRP-513	X	1	X	1
64	3011190800	CASE EGG TRAY	GPSS	1	1	1	1
65	3019064700	POCKET EGG	FRP-512 PS MF-1-301	2	1	1	2
67	3019064900	POCKET JUMBO	PC MF-1-301 FRP-512	1	1	1	1
68	3014250500	PANEL DISPNS AS	PANEL+LEVER FRP-512	X	1	X	1
68-1	3013703300	LEVER DISPNS	PC FRP-513	X	1	X	1
69	301119AD00	CASE DISPNS DRN	ABS SG0760, FRP-513	1	1	1	1