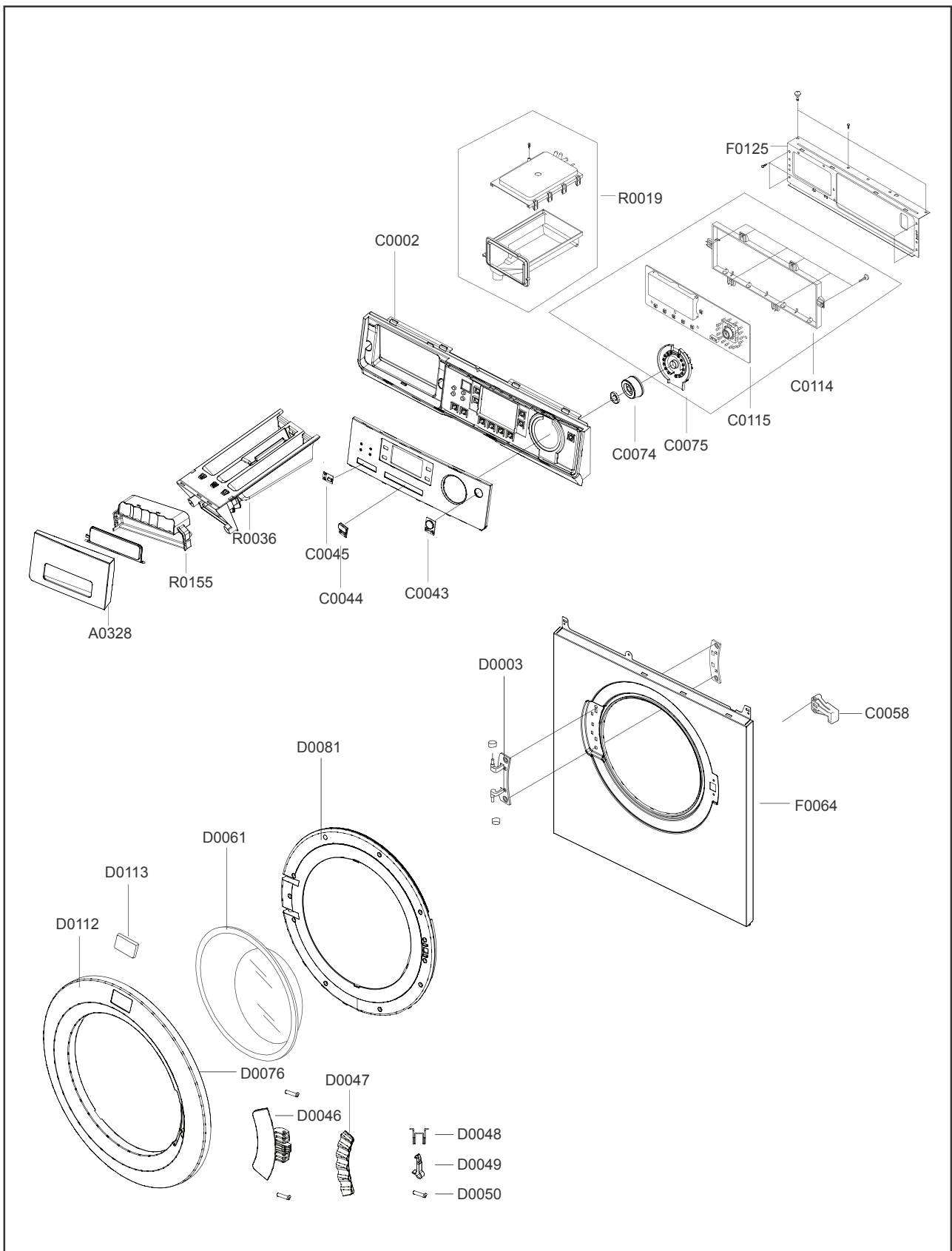
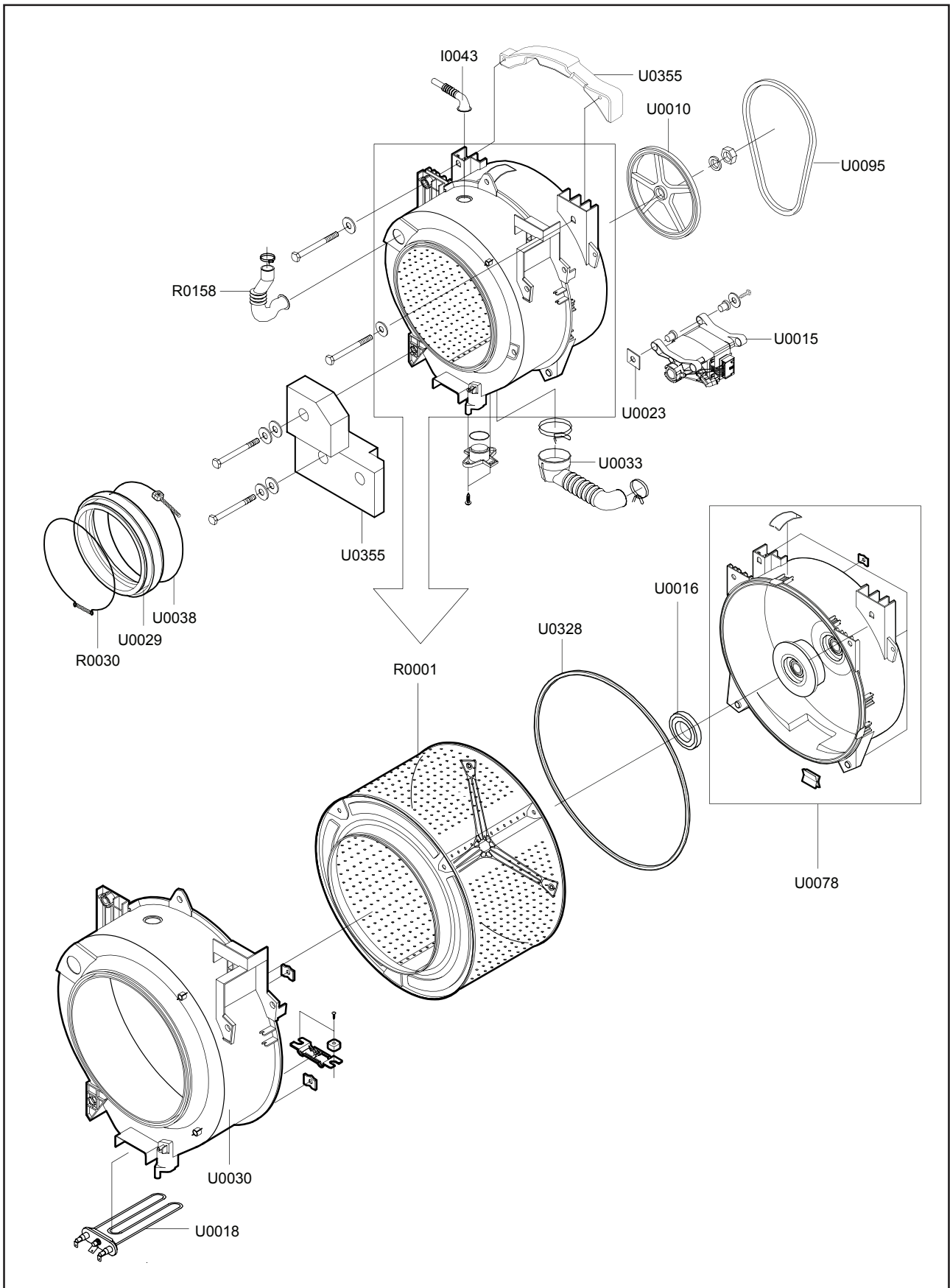


7. EXPLODED VIEWS AND PARTS LIST

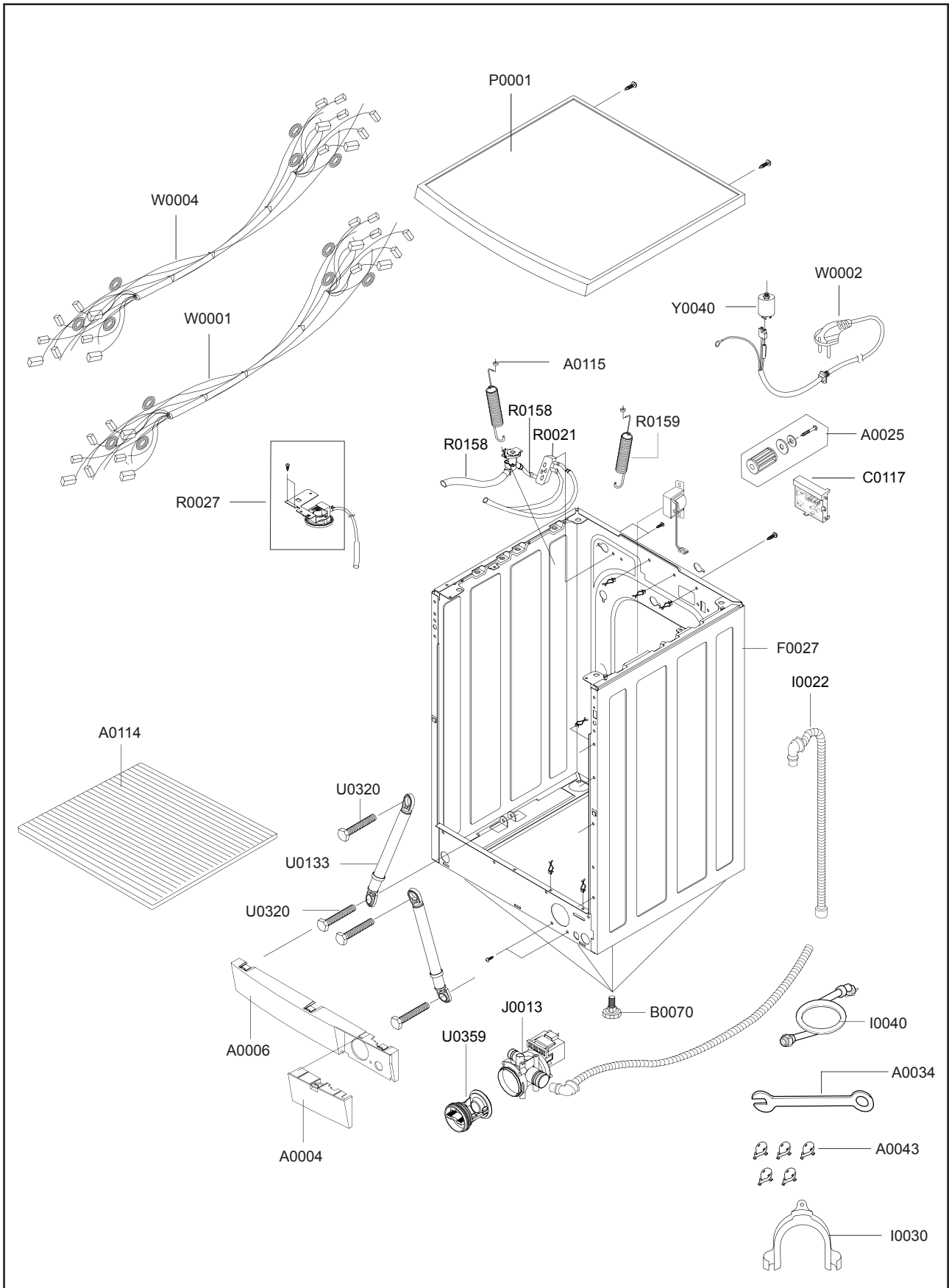
7-1. EXPLODED VIEWS OF TOP(FRONT)



7-2.EXPLODED VIEWS OF TUB



7-3.EXPLODED VIEWS OF CASE



PART LIST

WF7522S8R-YLP

SVC LOC	CODE NO	DESCRIPTION	SPECIFICATIONQ	Q' TY	SA/SNA
A0004	DC63-00609B	COVER-FILTER	WF-S854S/YLP (T2-PJT), ABS, -,	1	SA
A0006	DC63-00608B	COVER-FRONT (L)	WF-S854S/YLP (T2-PJT), ABS,	1	SA
A0025	DC97-02106A	ASSY-FIXER TUB	S1005J, SLIM-PJT	4	SA
A0034	DC60-40146A	BOLT-SPANER	-, HR, -, T2. 3, OD36, -, BLK, -, -	1	SA
A0043	DC61-10688A	CAP-FIXER	SWF-P12, PP (TB53), -, -, -, WHT, -,	7	SA
A0043	DC67-00208A	CAP-FIXER	J1453GW/XEU, PP, 1. 5mm, -, -, NTR, -	1	SA
A0043	DC61-10688A	CAP-FIXER	SWF-P12, PP (TB53), -, -, -, WHT, -,	1	SA
A0114	DC64-01136A	SHUTTER	R-SCD, PP, T4. 0, W580, L405, WHT, SSEC	1	SA
A0115	DC61-60180A	SLEEVE-PLUG	NYLON#6, SEW-720DR, -, -, NTR	4	SA
A0247	DC65-00011A	CLAMPER CORE	SEW-HW108, NYLON, -, 15, NTR, PO	1	SA
A0358	DC96-00171A	ASSY-WIRE EARTH	P-PJT (DRUM), WIRE/UL1015#	1	SA
A0362	DC61-40081A	HOLDER-WIRE	DAWH-2NC, NYLON66, -, -, -, -, NTR	4	SA
B0070	DC97-02079D	ASSY-LEG	SBP2, SD455, SD405, FLANG TYPE/25M	4	SA
C0002	DC97-12024L	ASSY-PANEL CONTROL	WF7522S8R/YLW, VIEW-CI	1	SA
C0058	DC64-00653A	DOOR-LOCK S/W	DA, PA6-G, -, H82, W50, -, BLK, 2	1	SA
C0075	DC64-01226A	KNOB-ENCODER	CATS2-PJT, ABS, -, -, -, -, -, -	1	SA
C0075	DC64-01227B	BUTTON-ENCODER	VIEW, ABS, -, -, BLK, -	1	SA
C0115	MFS-VCIONAW-00	ASSY PCB PARTS (M)	MFS-VCIONAW-	1	SA
C0117	MES-AG2MOD-S0	ASSY PCB PARTS (S)	MES-AG2MOD-S	1	SA
C0117	MFS-VCIR2AW-S0	ASSY PCB PARTS (S)	MFS-VCIR2AW-	1	SA
D0003	DC61-00932A	HINGE-DOOR	Q1636GW/XEU, ZNDC, -, -, -, -, -, TS	1	SA
D0010	DC97-14037B	ASSY-COVER DOOR	WF7522S8C, WF7522S8C/CR-C	1	SA
D0061	DC61-20207A	DOOR-GLASS	Q1636GW/XEU, GLASS, -, -, -, -, TRP	1	SA
D0072	DC61-00891A	GUIDE-HINGE	HAUZEN (DOM), POM, -, -, -, WHT, HI	2	SA
D0081	DC61-01144A	HOLDER-GLASS	SEW-3HR109BT, PP (TB53), -, -, -	1	SA
F0027	DC99-00529D	ASSY-PAINT FRAME	WF-R1056R/XSC, IMP-SIL/R	1	SA
F0064	DC97-06827D	ASSY-FRAME FRONT	WF-S854S/YLP, SIL SPRAY-	1	SA
F0125	DC61-01583A	FRAME-PLATE (U)	WF-R106NS, GA, -, -, -, T1. 0, -	1	SA
I0003	DC62-00079A	HOSE-WATER	P1405J, PVC+NYLON, -, -, -, L1500,	1	SA
I0022	DC97-00139E	ASSY-HOSE DRAIN (O)	SB-PJT, PP/L1770/CHINA	1	SA
I0030	DC62-10278A	HOSE-HANGER	-, PP (JS20), -, -, -, -, NTR, -	1	SA
I0043	DC62-10303A	HOSE-AIR	-, EPDM, ID24, -, -, L130, BLK, SWF-P1	1	SA
J0013	DC96-00692A	ASSY-PUMP DRAIN	P8091/CHINA, 220~240V/50H	1	SA
J0019	DC61-10652C	CASE-PUMP	PP (5113MF6), SWT50B1P, -, -, -, GRY	1	SA
J0025	DC31-30008D	PUMP-DRAIN	SW-70XP, 220/240V, 50Hz, SYNCHRO	1	SA
P0001	DC97-11639B	ASSY-COVER TOP	TRIUMPH-B R MODEL & VEIW	1	SA

PART LIST

WF7522S8R-YLP

SVC LOC	CODE NO	DESCRIPTION	SPECIFICATIONQ	Q' TY	SA/SNA
P0042	DC63-00814A	COVER-HANDLE	VIEW-CIS, ABS, -, -, -, -, WHT,	1	SA
P0082	DC97-05973A	ASSY-HOSE PRESSURE	5. 2kg/SD455/SD405, PVC	1	SA
R0001	DC97-01463L	ASSY-DRUM	R1043~R843, 1000RPM	1	SA
R0007	DC97-00124D	ASSY-FLANGE SHAFT	R1043~R843, MID-PJT/5. 2	1	SA
R0017	DC97-02051E	ASSY-DRUM LIFTER	SD405/455-PJT, LIFTER+FI	3	SA
R0019	DC97-11428C	ASSY-HOUSING DRAWER	SLIM/R-MODEL, AG+	1	SA
R0021	DC97-11430A	ASSY-GUIDE WATER	DRUM, AG+ KIT	1	SA
R0025	DC97-12913A	ASSY-PANEL DRAWER	WD7704S8S/YLP, VIEW-CIS	1	SA
R0027	DC97-00731A	ASSY-SENSOR PRESSURE	P1091, S-PRE+BRACKET+	1	SA
R0030	DC91-12078A	ASSY-WIRE DIAPHRAGM	SWF-P12, FRAME-FRONT	1	SA
R0036	DC61-01656A	BODY-DRAWER	SLIM, PP (TB53), T2. 0, -, L194, W1	1	SA
R0106	DD60-50018A	NUT-FLANGE	-, M5XPO. 8, FZY, MSWR10, -	2	SA
R0124	DC61-01619A	STOPPER-DRAWER	SLIM, PP (TB53), T2. 0, W33, L7	1	SA
R0158	DC62-10305A	HOSE-DRAWER TUB	-, EPDM, ID35, -, -, L158, BLK	1	SA
R0159	DC61-01279A	SPRING-HANGER	5. 2KG (F631/F831), HSWR, CD2.	2	SA
R0159	DC61-01280A	SPRING-HANGER	5. 2KG (F631/F831), HSWR, CD2.	2	SA
U0003	DC60-60044A	WASHER-PLAIN	-, ID10. 5, OD30, T3, -, STS304	2	SA
U0004	DC63-10003C	SPONGE-HOSE AIR	POL, GRY, SWF-P12, HB22-GRE	1	SA
U0010	DC66-10176D	PULLEY	SB-PJT, ALDC, -, -, ID12. 5, -, -, CENTER	1	SA
U0015	DC31-00002E	MOTOR UNIVERSAL-DRUM	HXGN2I. 02, 0~14000, -	1	SA
U0016	DC62-00007A	SEAL-OIL	-, NBR (SD25), BLK, -, -, -, P6091/NBU	1	SA
U0018	DC47-00006M	HEATER	-, Triumph-PJT, -, 1900W, 8. 26A, 230V,	1	SA
U0023	DC61-40348B	BRACKET-NUT	SBHG-R, P1291, T3, -, -, -, NO-PAI	4	SA
U0023	DC61-40348B	BRACKET-NUT	SBHG-R, P1291, T3, -, -, -, NO-PAI	2	SA
U0029	DC61-20219E	DOOR-DIAPHRAGM	SEW-HW107, EPDM, -, -, -, GR	1	SA
U0030	DC61-00365E	TUB-FRONT	R1053, FRPP (GR15%) JINFA, -, -, -, S	1	SA
U0033	DC62-00121A	HOSE-FILTER TUB	S1005J, EPDM, ID65, -, -, -, -	1	SA
U0035	DC62-20311A	VANE-CHECK	SWF-P12, EPDM, -, -, BLK, -	1	SA
U0038	DC91-12077D	ASSY-CLAMP DIAPHGRAM	WF-B853/XSC, SWF-12/	1	SA
U0078	DC97-10977H	ASSY-SEMI TUB BACK	WF-R1053, FRPP (GR15%)	1	SA
U0082	DC62-00116A	FILTER-NET	P1205J, EPDM+STS304, -, OD25, ID9	1	SA
U0095	6602-001199	BELT-TIMING GEAR	1275JMA, POLYURETHAN, T3.	1	SA
U0133	DC66-00343F	DAMPER-SHOCK	GW-PJT, STEEL+PP+RUBBER, 60N,	2	SA
U0307	DC61-00041A	CUSHION-MOTOR	SWF-6V, BUTYL, -, -, -, ID16/OD	1	SA
U0320	6011-001447	BOLT-HEX	M8, L123 (25), ZPC (YEL), SWRCH18A, W	1	SA
U0320	6011-001448	BOLT-HEX	M8, L170 (25), ZPC (YEL), SWRCH18A, W	1	SA

PART LIST

WF7522S8R-YLP

SVC LOC	CODE NO	DESCRIPTION	SPECIFICATIONQ	Q' TY	SA/SNA
U0320	DC60-40141A	BOLT-HEX	SM10C/DAMPER, HEX, M8, L66, -, ZPC2 (2	SA
U0320	DC60-40144A	BOLT-HEX	M10, L41, ZPC2 (YEL), SM10C/DAMPER	2	SA
U0328	DC62-40183A	PACKING-TUB	SWF-P12, EPDM, -, -, -, -, BLK, -	1	SA
U0353	DC61-60359E	CLAMPER HOSE	F1235AS/F1035AS, -, -, ID7. 8, Y	1	SA
U0353	DC61-60359G	CLAMPER HOSE	F1235AS/F1035AS, -, -, ID37. 2,	1	SA
U0353	DC61-60359E	CLAMPER HOSE	F1235AS/F1035AS, -, -, ID7. 8, Y	1	SA
U0353	DC61-60497A	CLAMPER HOSE	SWF-P12, HSWR, -, ID70/OD75. 8,	1	SA
U0353	DC61-00118A	CLAMPER HOSE	P1291, LYLON6/6, ID27, OD30, -,	1	SA
U0353	DC61-00133A	CLAMPER HOSE	P1291, PP (BJ-730), ID24. 5, OD2	1	SA
U0355	DC67-00042C	WEIGHT-BALANCER	F, R MODEL ETC. , Concrete,	1	SA
U0355	DC67-00143A	WEIGHT-BALANCER	5. 2KG, CONCRETE, -, -, -, U	1	SA
U0359	DC62-00066A	FILTER-CASE	-, PP, -, -, -, -, BLK/SW90V2	1	SA
U0360	DC61-60499B	CLIP-TUB	HSWR, P1291, -, NO/PAINT,	7	SA
U0360	DC61-60520A	CLIP-TUB	SK5, SWF-P12, -, PLATE-TYPE,	3	SA
W0001	DC96-00990A	ASSY-WIRE HARNESS	TROIKA-PJT, SUB/WIRE (R	1	SA
W0002	DC96-00146A	ASSY POWER CORD	UCP2, -, 250V/16A, -, -, -, -,	1	SA
W0004	DC96-01232A	ASSY-M. WIRE HARNESS	WF-F126A/CATS2, AC220	1	SA
W0010	DC63-00651A	COVER-HEATER	Q1657TGW/XEU, GI, TO. 4, -, -, -,	1	SA
W0040	DC62-00024F	VALVE-WATER	B1215J, NYLON66/250TRMN, -, -, N	1	SA
Y0035	DE65-20026A	CABLE CLAMP	-, NYLON66, -, NYLON66, NTR, NTR,	2	SA
Y0040	DC29-00006A	FILTER-EMI	DFC-2712R, P/PV/SLIM, 250V, 12A,	1	SA
Y0090	DC26-00022B	TRANS SWITCHING	EE1616-H, STANDARD UNDER	1	SA
Z0006	DC97-02412H	ASSY-BOLT	Q1657, -	2	SA
Z0006	DC97-06159B	ASSY-BOLT	SCD-PJT	1	SA
	6011-001461	BOLT-SOCKET	M12, L25, ZPC (YEL), SWRCH10A, HE	1	SA