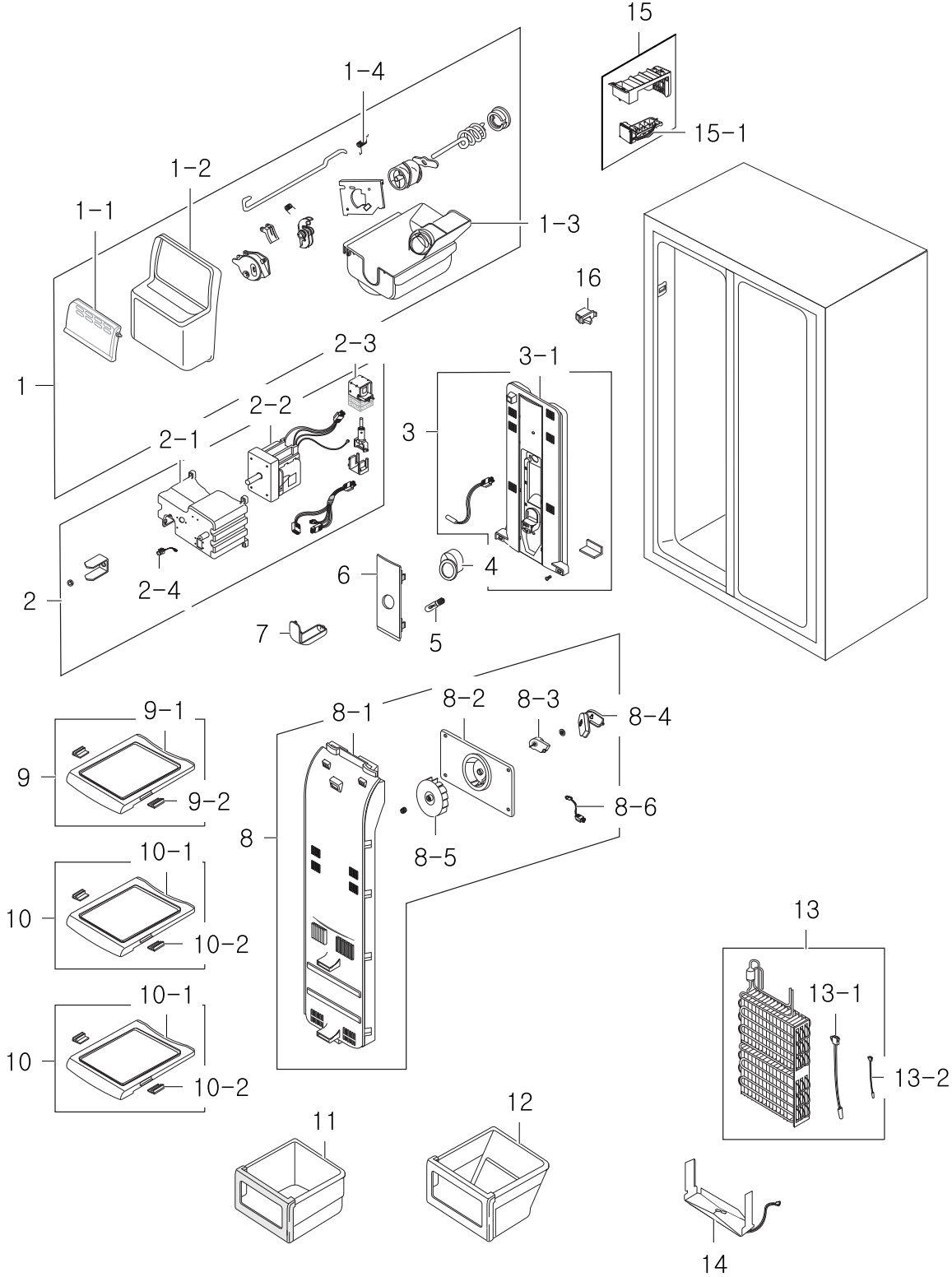


1. Freezer

Exploded View



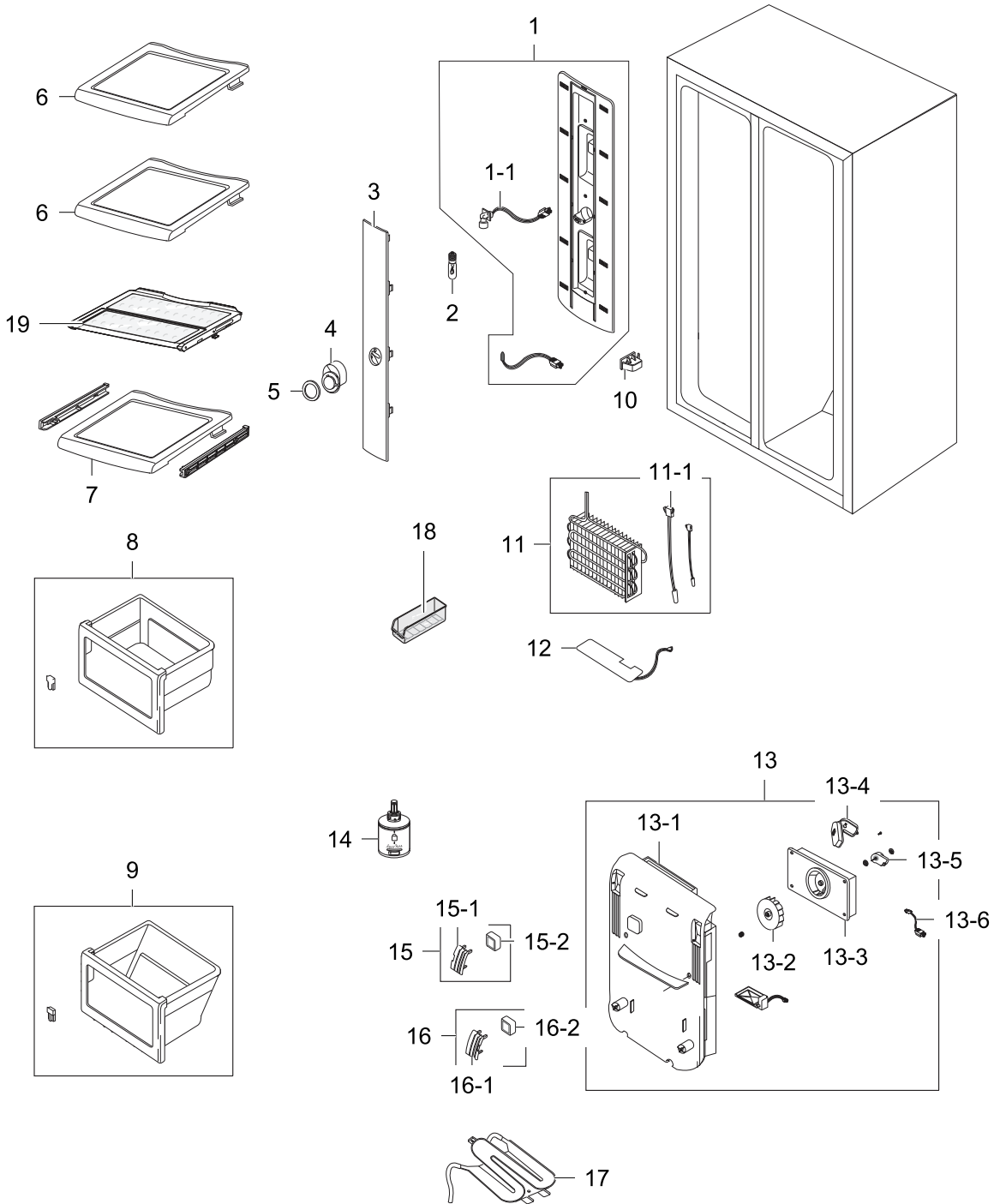
Parts List

No.	Lvl.	Loc.	Material Code	Description & Specification	SNA	Qty.
1	2	RF304	DA97-03898J	ASSY TRAY-ICE BUCKET; ET,-,-,-,-,-	SA	1
1-1	3	RF330	DA63-00181C	COVER-ICE BURKET;B; ET-PJT,PP,-,-,-,-,-,C	SA	1
1-2	3	RF327	DA63-03073A	COVER-ICE BUCKET; ET-VE,ABS,T2.0,-,-,-,-,-	SA	1
1-3	3	RM098	DA63-03071A	TRAY ICE-BUCKET; ET-VE,HIPS,T2.0,-,-,-,-,-	SA	1
1-4	3	RM039	DA61-20124A	SPRING ETC-DISPENSER; SR-S7180,STS304,PI0	SNA	1
2	2	RF416	DA97-03897A	ASSY CASE-AUGER MOTOR; ET-VE,-,-,-,-,-,220~	SNA	1
2-1	3	RF417	DA61-02794A	CASE-AUGER MOTOR; ET-VE,PP,T2.0,-,-,-,-,-	SA	1
2-2	3	RF434	DA31-00105C	MOTOR GEARED-AUGER; 15rpm,50Hz,-,220-240V	SA	1
2-3	3	RO088	DA74-40151F	VALVE-SOLENOID; SR-S6586B,-,-,-,-,-,CUBE-SN	SA	1
2-4	3	RI080	DA47-00069P	LAMP HOLDER-LAMP; E14,250V,0.3,-,-,-,-,-,PBT,-	SA	1
3	2	RF439	DA97-00101L	ASSY COVER-MULTI FRE(ET); ET-PJT,Dispense	SA	1
3-1	3	RF233	DA63-00363B	COVER EVAP-FRE FRONT; ET-PJT,PP,-,-,-,-,-,-	SA	1
4	2	RI611	DA63-00162B	COVER SENSOR-B; ET-PJT,ABS,-,-,-,-,-,PNC2,-	SC	2
5	3	RK339	4713-001189	LAMP-INCANDESCENT; 240V,-,30W,-,-,-,-,-,25x84	SA	1
6	2	RF402	DA63-00364A	COVER LAMP-FRE,A; ET-PJT,PP,-,-,-,-,-,-,FUL	SA	1
7	3	RN934	DA63-03072A	COVER-LAMP; ET-VE,PP,T2.0,-,-,-,-,-,-,-	SA	1
8	2	RF005	DA97-02088U	ASSY COVER EVAP-FRE; ET-PJT,-,-,-,W264.5,-,-	SNA	1
8-1	3	RF509	DA63-00153E	COVER-EVAP FRE(FRONT LOW); ET-PJT,PP,-,-,-,-,-	SA	1
8-2	3	RY172	DA61-00417A	CASE MOTOR; A-TOP,ABS SCRAP,-,-,-,-,-,WHT,SBS	SA	1
8-3	3	RR088	DA31-00146B	MOTOR BLDC; DRCP5030LA,1560,-,-,DC12V,230mA	SC	1
8-4	3	RF455	DA63-01809A	COVER MOTOR-BLDC; BLDC-NEW,PP,NTR,-,-,-,-,-,-	SA	1
8-5	3	RK182	DA31-00053A	FAN-BACKWARD; -,A-TOP,ABS,-,-,FRE	SA	1
8-6	3	RY711	DA39-00060B	WIRE HARNESS-MOTOR; -,-,-,-,-,-,-,F-FAN,-,-	SC	1
9	2	RF462	DA97-01962C	ASSY SHELF FRE-MID(ET); ET-PJT,NON PRINT	SC	1
9-1	3	RF353	DA67-00175B	SHELF-FRE; ET-PJT,HIPS,Cool-white,SC-0027	SA	1
9-2	3	RK886	DA64-00090A	TRIM-SHELF; LDPE,-,-,T1.0	SA	2
10	2	RF087	DA97-01932E	ASSY SHELF FRE-LOW(ET); ET-PJT,NON PRINT	SC	2
10-1	3	RF360	DA67-00146B	SHELF-FRE LOW(ET); ET-PJT,HIPS,Cool-white	SA	2
10-2	3	RK886	DA64-00090A	TRIM-SHELF; LDPE,-,-,T1.0	SA	2
11	2	RF002	DA97-00425C	ASSY CASE-BASKET UP; ET-PJT,Cool-white,EX	SA	1
12	2	RF001	DA97-00424C	ASSY CASE-BASKET LOW(ET); ET-PJT,EXP,Cool	SA	1
13	2	RF011	DA96-00090M	ASSY EVAP-FRE; V2-PJT,HFC-134A,A1100P-H12	SA	1
13-1	3	RK866	DA47-00095B	THERMO FUSE-ASSY; ET-PJT,-,-,250V,-,-,-,-,-,-	SC	1

No.	Lvl.	Loc.	Material Code	Description & Specification	SNA	Qty.
13-2	3	RR358	DA32-00006B	SENSOR TEMP; PX-41C,502AT-2,A TOP,-10C~35	SA	1
14	2	RF026	DA97-00339B	ASSY-PLATE DRAIN,FRE; ET-PJT,230V,41W,-	SA	1
15	2	RM061	DA97-00258K	ASSY ICE MAKER; ZIPEL DOM ET-PJT,DC 12V,-	SA	1
15-1	3	RM088	DA67-40334A	TRAY-ICE; SR-S6586/S7087,PP,T1.0,-,-,-,-,	SA	1
16	2	RF041	DA34-10120E	SWITCH DOOR-F; -,slide,-,-,250V,-,0.5A,-,	SA	1

2. Refrigerator

Exploded View

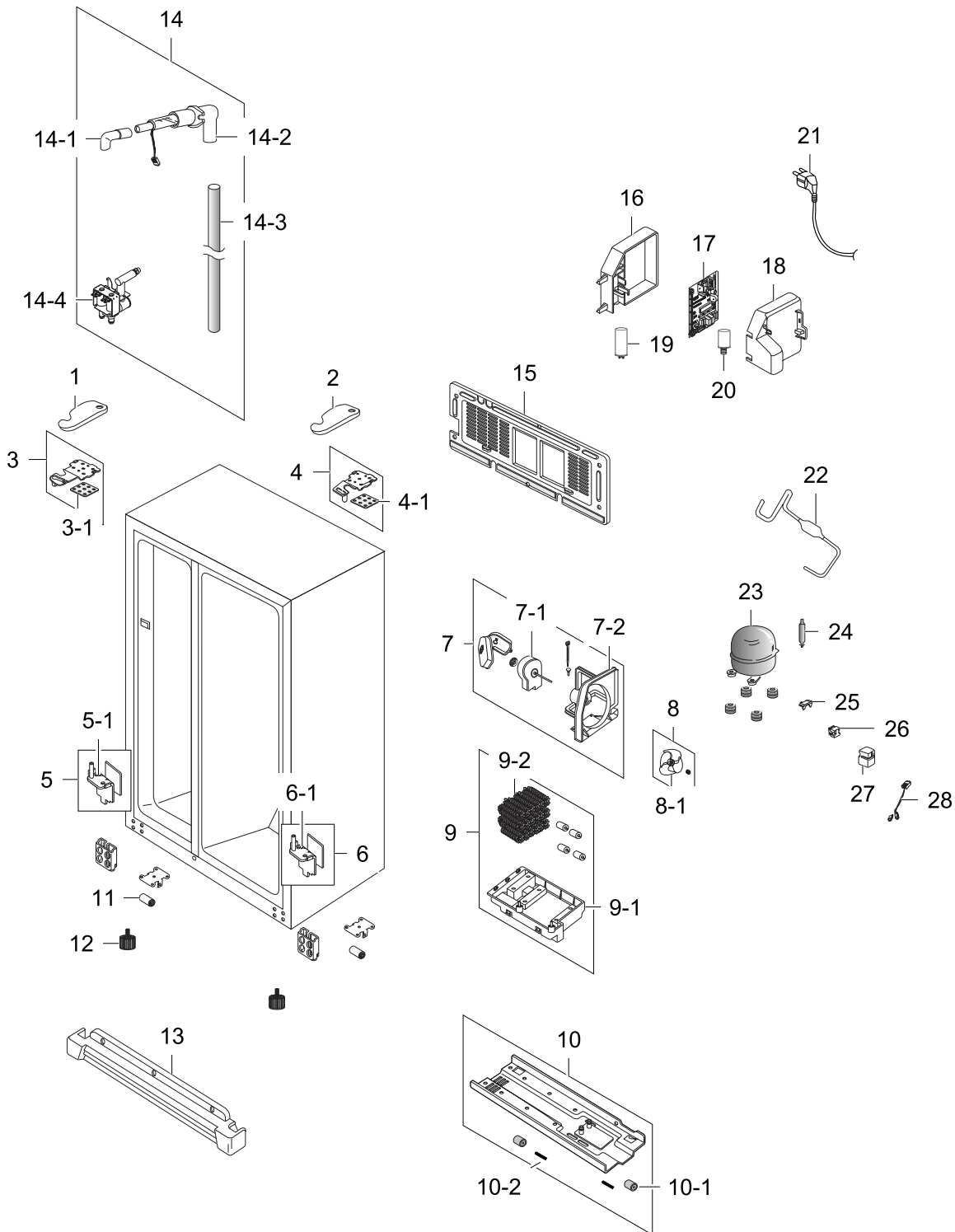


Parts List

No.	Lvl.	Loc.	Material Code	Description & Specification	SNA	Qty.
1	2	RI019	DA97-00102P	ASSY-COVER MULTI REF; ET-PJT,EXP,-,-	SA	1
1-1	3	RK316	DA47-00025H	LAMP HOLDER; E14,250V,1A,370,NTR,PBT 5VA,	SA	1
2	3	RK339	4713-001189	LAMP-INCANDESCENT; 240V,-,30W,-,-,-,25x84	SA	1
3	2	RG028	DA63-00160A	COVER-LAMP REF; -,PP,-,-,-,-,A	SA	1
4	3	RK178	DA63-11065A	COVER-SENSOR; SR-S6586/7087,PP,-,-,-,-,-,	SA	1
5	3	RK178	DA63-11065A	COVER-SENSOR; SR-S6586/7087,PP,-,-,-,-,-,	SA	1
6	2	RI671	DA67-00149D	SHELF REF-UPP(ET); ET-PJT,HIPP,-,-,-,SC-0	SA	2
7	2	RI660	DA67-00148G	SHELF REF-LOW(ET); ET-PJT,HIPP,-,-,-,SC-0	SA	1
8	3	RI430	DA61-01787A	CASE-VEG UP(ET); ET-PJT,PP,Cool-white,SC-	SNA	1
9	3	RI084	DA61-01786A	CASE-VEG LOW(ET); ET-PJT,PP,Cool-white,SC	SA	1
10	2	RI003	DA34-10110E	SWITCH DOOR-R; -,Sliding,-,-,250V,-,0.5A,	SC	1
11	2	RI016	DA96-00013Y	ASSY EVAP-REF; ET-PJT,-,A1100P-H12,-,230V	SA	1
11-1	3	RK865	DA47-00095A	THERMO FUSE-ASSY; ET-PJT,250V,-,-,-,-,-	SC	1
12	3	RI695	DA47-00038B	HEATER-DRAIN,REF; -,ET-PJT EXP,-,-,-,240V	SA	1
13	2	RI008	DA97-03334K	ASSY COVER EVAP-REF; ET-PJT,-,-,W416,L534	SC	1
13-1	3	RG175	DA63-00159E	COVER-EVAP REF(ET); ET-PJT,PP,-,-,-,SC-02	SNA	1
13-2	3	RO139	DA31-00016A	FAN-CIRCUIT; -,ET-PJT,-,-,-,12,95,63.	SA	1
13-3	3	RY172	DA61-00417A	CASE MOTOR; A-TOP,ABS SCRAP,-,-,-,WHT,SBS	SA	1
13-4	3	RF455	DA63-01809A	COVER MOTOR-BLDC; BLDC-NEW,PP,NTR,-,-,-,-,-	SA	1
13-5	3	RF431	DA31-00146E	MOTOR FAN-BLDC; DREP5020LB,BLDC Motor,0.2	SA	1
13-6	3	RY714	DA39-00060G	WIRE HARNESS-MOTOR; ZIPEL,-,-,-,L650,-,-,	SA	1
14	2	RI070	DA29-00003B	FILTER WATER-ASSY; -,A-TOP,-,-,86*86*167,	SNA	1
15	2	RF014	DA97-01487H	ASSY COVER-PURIFIER,L; ET-PJT,-,-,W59,L75	SNA	1
15-1	3	RF333	DA63-00163H	COVER-PURIFIER,L; ET-PJT,ABS,-,-,-,HG-076	SA	1
15-2	3	RG022	DA02-90106P	CATALYST-LTC; NEXT,-,-,T7,W40,L40,-,-,SS6	SA	1
16	2	RI020	DA97-01486H	ASSY COVER-PURIFIER,R; ET-PJT,-,-,W59,L75	SNA	1
16-1	3	RI607	DA63-00164H	COVER-PURIFIER,R; ET-PJT,ABS,-,-,-,-,CO	SA	1
16-2	3	RG022	DA02-90106P	CATALYST-LTC; NEXT,-,-,T7,W40,L40,-,-,SS6	SA	1
17	2	RI043	DA97-00670F	ASSY TANK WATER; A-TOP,ET-PJT,LDPE,-,-,L1	SA	1
18	2	RN888	DA67-40250E	TRAY-UTILITY; SR-S7185.7335,GPPS,-,-,-,-,-	SA	1
19	2	RI259	DA97-00199X	ASSY-SHELF REF FOLD; ET-PJT,HIPP,COOL-WHI	SA	1

3. Cabinet

Exploded View



Parts List

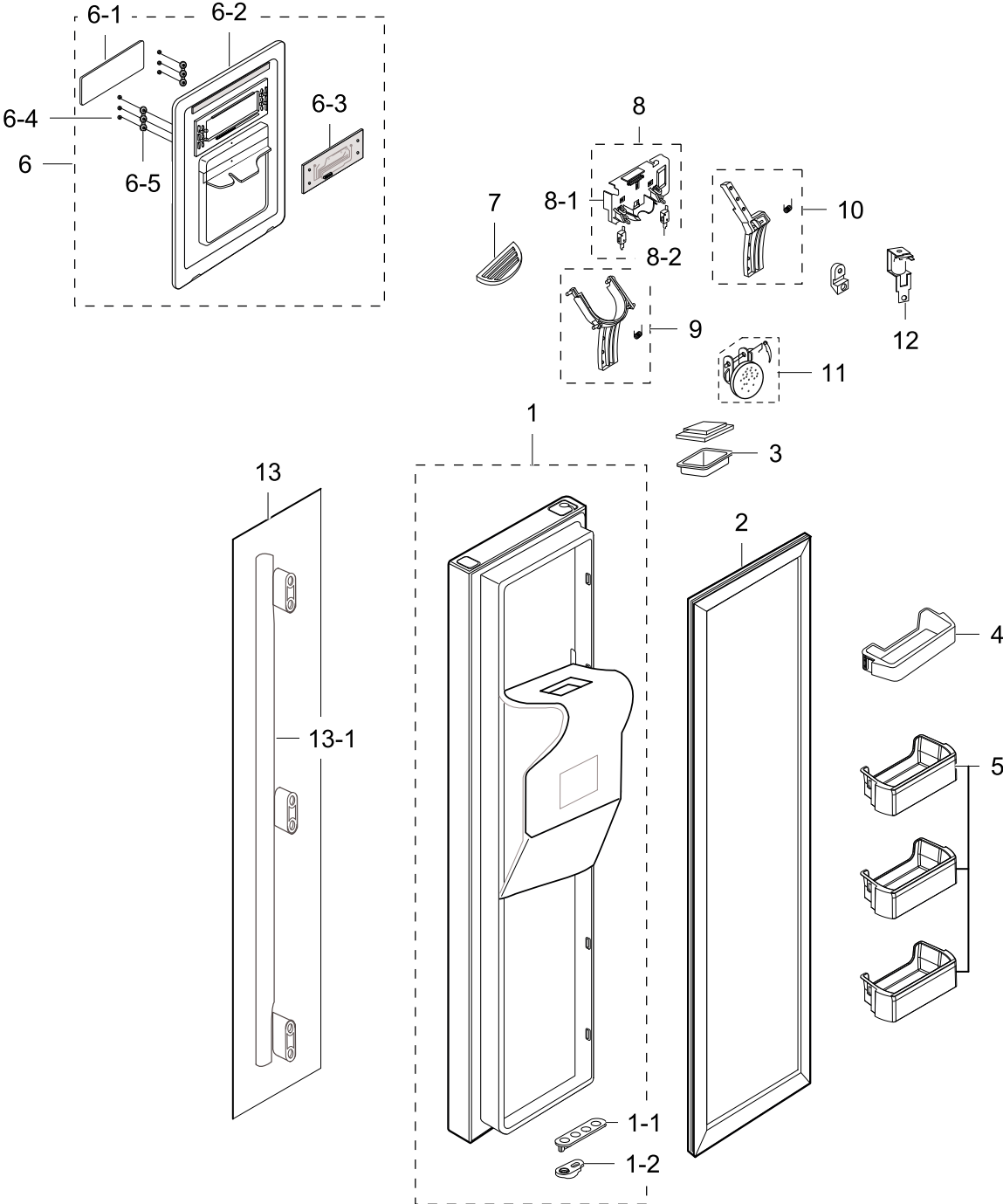
No.	Lvl.	Loc.	Material Code	Description & Specification	SNA	Qty.
1	2	RU212	DA63-02993D	COVER HINGE-UPP, L; ET,ATOP(50mm),ABS(HG0	SNA	1
2	2	RO455	DA63-02996D	COVER HINGE-UPP, R; ET,A-TOP(50mm),ABS(HG	SA	1
3	2	RO041	DA97-03809B	ASSY HINGE UPP-L; ET(50mm),-, -, -, -, DOM	SA	1
3-1	3	RK777	DA63-50192A	SHIM-HINGE UPP; -,RD-PVC,T1.0,-,L360,-,-	SA	1
4	2	RO042	DA97-03812B	ASSY HINGE UPP-R; ET(50mm),-, -, -, -, DOM	SA	1
4-1	3	RK777	DA63-50192A	SHIM-HINGE UPP; -,RD-PVC,T1.0,-,L360,-,-	SA	1
5	2	RO037	DA97-04107A	ASSY HINGE LOW-L; ET-PJT,T4.5,W80.4,L57.8	SC	1
5-1	3	RO433	DA61-02891A	HINGE-LOW FRE; ET-PJT,SHP1,T4.5,W54.6,L57	SA	1
6	2	RO147	DA97-01763A	ASSY HINGE LOW R; A-TOP,BASIC,10.5 Gasket	SC	1
6-1	3	RO435	DA61-01608A	HINGE-LOW REF; 10.5mm,SHP1,T4.5,T3.0,A-TO	SA	1
7	2	RO132	DA97-03870B	ASSY SUPPORT-CIRCUIT MOTOR; ET/ATOP_VE,-,	SA	1
7-1	3	RR088	DA31-00146B	MOTOR BLDC; DRCP5030LA,1560,-,DC12V,230mA	SC	1
7-2	3	RF412	DA61-02788A	SUPPORT-CIRCUIT MOTOR; ET/A-TOP_VE,ABS,T2	SA	1
8	2	RK180	DA31-00010F	FAN-ASS'Y; SBS,ABS+GLASSFIBER,150,3-Win	SA	1
8-1	3	RR029	DA31-00015C	FAN-TURBO; -,ET-PJT,ABS+GLASS FIBE,-,GR-4	SA	1
9	2	RH003	DA97-03869G	ASSY TRAY-DRAIN WATER; HERMES-PJT,W242.3,	SA	1
9-1	3	RH885	DA63-03069B	TRAY DRAIN-WATER; HERMES-PJT,PP SCRAP,-,W	SA	1
9-2	3	RW002	DA97-03962E	ASSY PIPE-SPIRAL COND; HERMES-PJT,VE	SA	1
10	2	RO002	DA97-03971C	ASSY CHASSIS-COMP; ET-VE,-,-,W255.5,L895.	SA	1
10-1	3	RR242	DA61-40126B	CASTER-REAR; REF-ALL,PP,-,PI 44,NTR,W22,-	SC	2
10-2	3	RH064	DA60-90146A	PIN-CASTER; MSWR10,OD6.0,L40,ZPC2,SR-289-	SA	2
11	3	RH799	DA61-01871A	CASTER; A-TOP,NY-66,O.D-35MM,-,-,-,-	SA	1
12	3	RO100	DA61-00805A	FOOT-FRONT; REF-ALL,PP,PI44,NTR,H65.8,-,B	SC	2
13	2	RO287	DA63-01968F	COVER-LEG FRONT; A-TOP(04),PP,Noble-sts(S	SA	1
14	2	RF290	DA97-00209K	ASSY-PIPE WATER FRE; ET-PJT,240V,-,-	SA	1
14-1	3	RF378	DA63-01701A	GROMMET-TUBE WATER,FILL IN; ET-PJT,SILICO	SA	1
14-2	3	RF335	DA73-00134A	PIPE-WATER FRE,ASSY(SUB); ET-PJT,AL,-,1	SA	1
14-3	3	RK450	DA73-00070W	PIPE-WATER LINE; ZIPEL,LDPE,-,OD7.93,L1	SA	1
14-4	2	RO522	DA62-00914A	VALVE WATER-FITTING; RIV-12A-22,220~240V,	SA	1
15	2	RH001	DA97-03961B	ASSY COVER-COMP(EXP); ET-VE,-,-,-,-,-,-	SA	1
16	2	RO285	DA61-00261A	CASE PCB-PANEL; A-TOP,N-ABS,-,-,-,-,-	SC	1

Exploded Views and Parts List

No.	Lvl.	Loc.	Material Code	Description & Specification	SNA	Qty.
17	2	RY475	DA41-00388A	ASSY PCB MAIN; ET-PJT VE,R600a,-,FR-4,1.6	SA	1
18	3	RO286	DA63-00783A	COVER PCB-PANEL; A-TOP,N-ABS,-,-,-,-,-,-	SC	1
19	2	RO004	2501-001186	C-OIL; 5uF,400V,BK,43x55mm,15mm	SA	1
20	3	RO229	DA27-00002A	COIL-NOISE FILTER; 4,+50%,-30%,38*50,-,-	SA	1
21	3	RK077	DA39-10115E	CBF-POWER CORD; ET-PJT,-,UCP-2,-,-,-,-,-	SA	1
22	2	RT094	DA97-06085B	ASSY PIPE CONNECT-SUCTION; HM10	SA	1
23	2	RH002	MK4A5QR1U/E09	COMPRESSOR; 15.31CC,220/240V~50HZ,RSCR		1
24	2	RH044	DA62-01514A	DRYER; REF-ALL,C1220T,OD18.70,L114,-,-,-	SC	1
25	2	RO354	DA34-10003V	RELAY PROTECTOR O/L; 4TM265RHBYY-53,ST9.4	SA	1
26	2	SA	DA35-00099A	RELAY PTC; 330MD2(J535Q35E330M3852),33RH006	1	
27	2	RH015	DA63-01866A	COVER RELAY; NORYL,T2.0,SSEC,BLACK,HOOK	SA	1
28	2	RH741	DA39-00084B	WIRE HARNESS-COMP; -,-,EXP,-,-,-,COMP,NOT	SC	1

4. Freezer Door

Exploded View

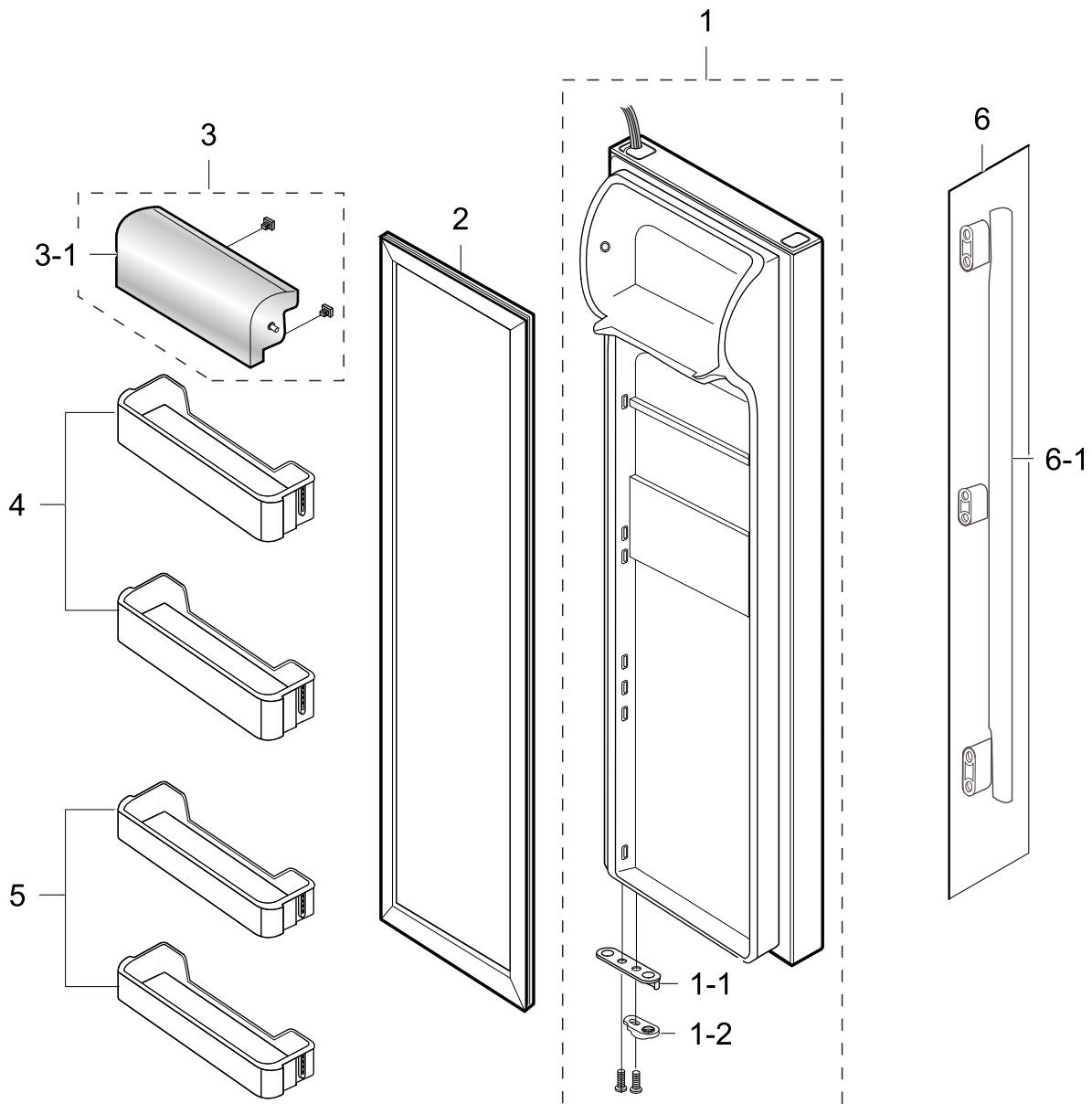


Parts List

No.	Lvl.	Loc.	Material Code	Description & Specification	SNA	Qty.
1	2	RD001	DA91-02301V	ASSY DOOR FOAM FRE; RS21(ET03),REAL/STAIN	SA	1
1-1	4	RE043	DA61-00550A	STOPPER DOOR; ET-PJT,SHP1,T3.0,-,-,-,-	SA	1
1-2	4	RO105	DA66-00344A	CAM-HINGE RISER LOW; USP05(ATOP,ET),NY-66	SC	1
2	2	RU513	DA97-04567A	ASSY-GASKET DOOR FRE; ET,SC-97487,-,-	SA	1
3	2	RY673	DA67-01430A	CAP-CHUTE ICE 50MM; ET-VE,ABS,DISP,50mm,E	SA	1
4	2	RD351	DA63-01863J	GUARD FRE-UP; ET50MM,HIPP,-,-,-,COOL-WHIT	SA	1
5	2	RY675	DA63-01864H	GUARD FRE-LOW(50); ET 04,No-silk,Cool-whi	SA	3
6	2	RD026	DA97-03967F	ASSY COVER-DISPENSER; ET-VE,DISP,EXP(EU),	SA	1
6-1	3	RR163	DA63-03023C	COVER-DISPENSER; ET-VE,ABS,DISP,EXP,-,-,-	SA	1
6-2	3	RD029	DA63-02018Z	COVER-CONTROL DISPENSER; ET-VE,ABS(CT-051	SA	1
6-3	3	RR489	DA41-00173A	ASSY PCB KIT LED; A-TOP LOOK,R/F 9mm!f10m	SA	1
6-4	3	RK310	DA64-00740B	KNOB-TOUCH; A-TOP,ABS,-,-,-,-,SILVER COAT	SA	6
6-5	3	RG086	DA61-00874A	SUPPORT-KNOB TOUCH,DISP; A-TOP,SILICON,-,	SA	2
7	2	RO489	DA63-02990R	TRAY DISPENSER; ET-VE,ABS,DISP,-,-,NOBLE	SA	1
8	2	RI169	DA97-05429C	ASSY COVER-PBA PANEL REAR; ET-VE,DISP,-,-	SA	1
8-1	3	RO464	DA63-03017A	COVER-PBA PANEL REAR; ET-VE,ABS,-,EXP,-,-	SA	1
8-2	2	RD460	DA34-00011B	SWITCH MICRO; -,-,-,-,250V,-,15A,-,-,-,-,	SA	2
9	3	RD363	DA66-00398C	LEVER DISPENSER-ICE; ET-VE,DISP,-,-,-,NOB	SA	1
10	3	RD365	DA66-00399C	LEVER DISPENSER-WATER; ET-VE,DISP,-,-,-,N	SA	1
11	3	RD068	DA97-04131G	ASSY COVER-ICE ROUTE; ET-VE,-,-,-,-,-,N	SA	1
12	3	RO088	DA74-40151F	VALVE-SOLENOID; SR-S6586B,-,-,-,-,CUBE-SN	SA	1
13	2	RO140	DA97-00727D	ASSY HANDLE-BAR; A-TOP,A6063,,,1587,,,LON	SC	1
13-1	3	RO391	DA64-00575F	HANDLE BAR; ET-PJT,AL,-,-,L1587,-,-,AL(A6	SA	1

5. Refrigerator Door

Exploded View



Parts List

No.	Lvl.	Loc.	Material Code	Description & Specification	SNA	Qty.
1	2	RE001	DA91-01745A	ASSY DOOR FOAM REF; ET-PJT(RS21),STAINLES	SA	1
1-1	4	RE043	DA61-00550A	STOPPER DOOR; ET-PJT,SHPI,T3.0,-,-,-,-	SA	1
1-2	4	RO105	DA66-00344A	CAM-HINGE RISER LOW; USP05(ATOP,ET),NY-66	SC	1
2	2	RR238	DA97-04567B	ASSY-GASKET DOOR REF; ET,SC-97487,-,-	SA	1
3	2	RD018	DA97-00904E	ASSY COVER-GUARD; ET-PJT,-,-,50mm,-,-,-,-	SC	1

Exploded Views and Parts List

No.	Lvl.	Loc.	Material Code	Description & Specification	SNA	Qty.
3-1	3	RD356	DA63-02966A	COVER-GUARD; ET-PJT,GPPS,-,-,-,-,NTR,-	SA	1
4	2	RE365	DA63-00635E	GUARD REF-UP(50); ET-PJT,EXP,COOL-WHITE,S	SA	2
5	2	RE368	DA63-00590E	GUARD REF-LOW(50); ET-PJT,PP,EXP,Cool-whi	SA	2
6	2	RO140	DA97-00727D	ASSY HANDLE-BAR; A-TOP,A6063,,,1587,,,LON	SC	1
6-1	3	RO391	DA64-00575F	HANDLE BAR; ET-PJT,AL,-,-,L1587,-,-,AL(A6	SA	1