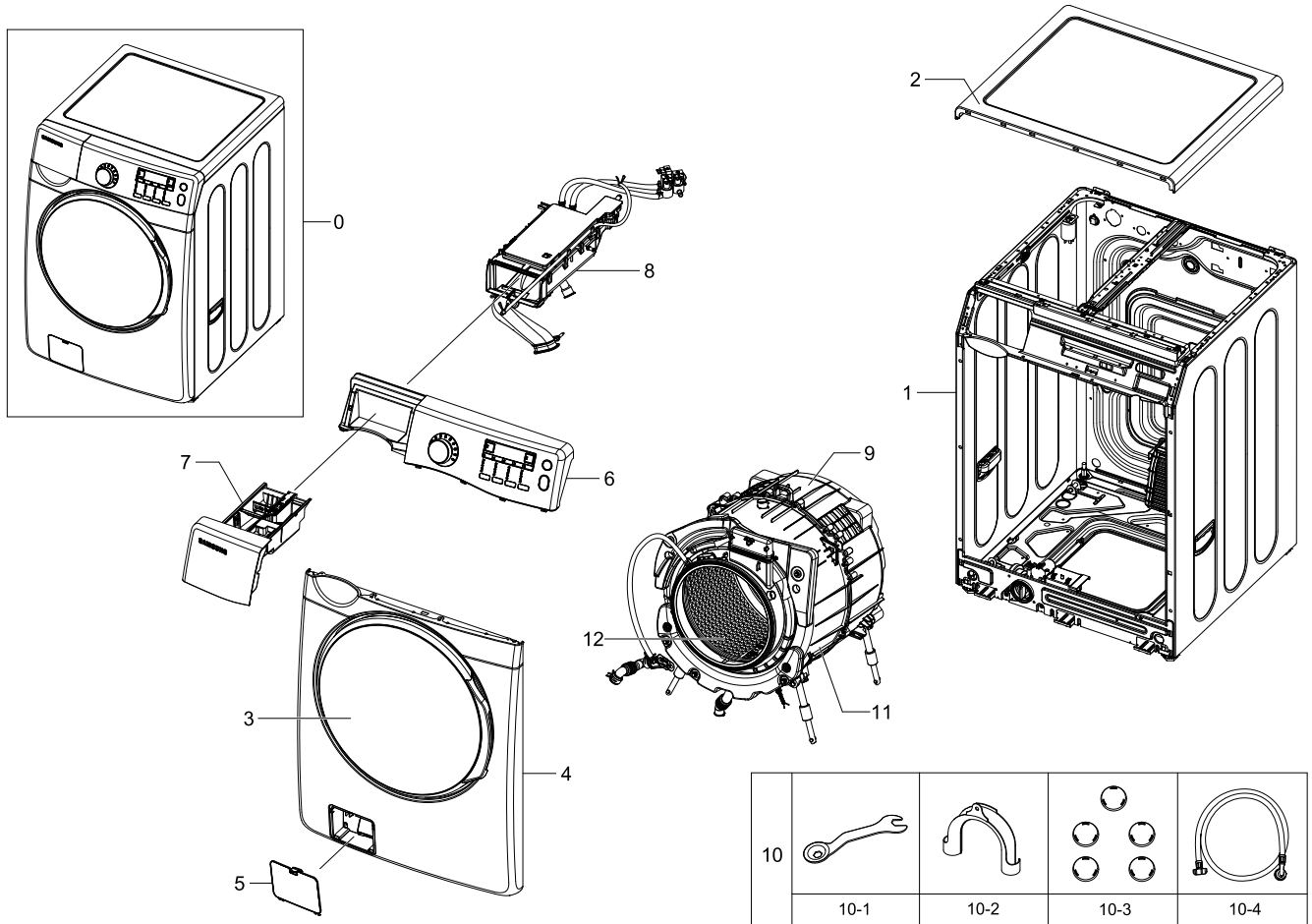


1. Main

Exploded View



Parts List

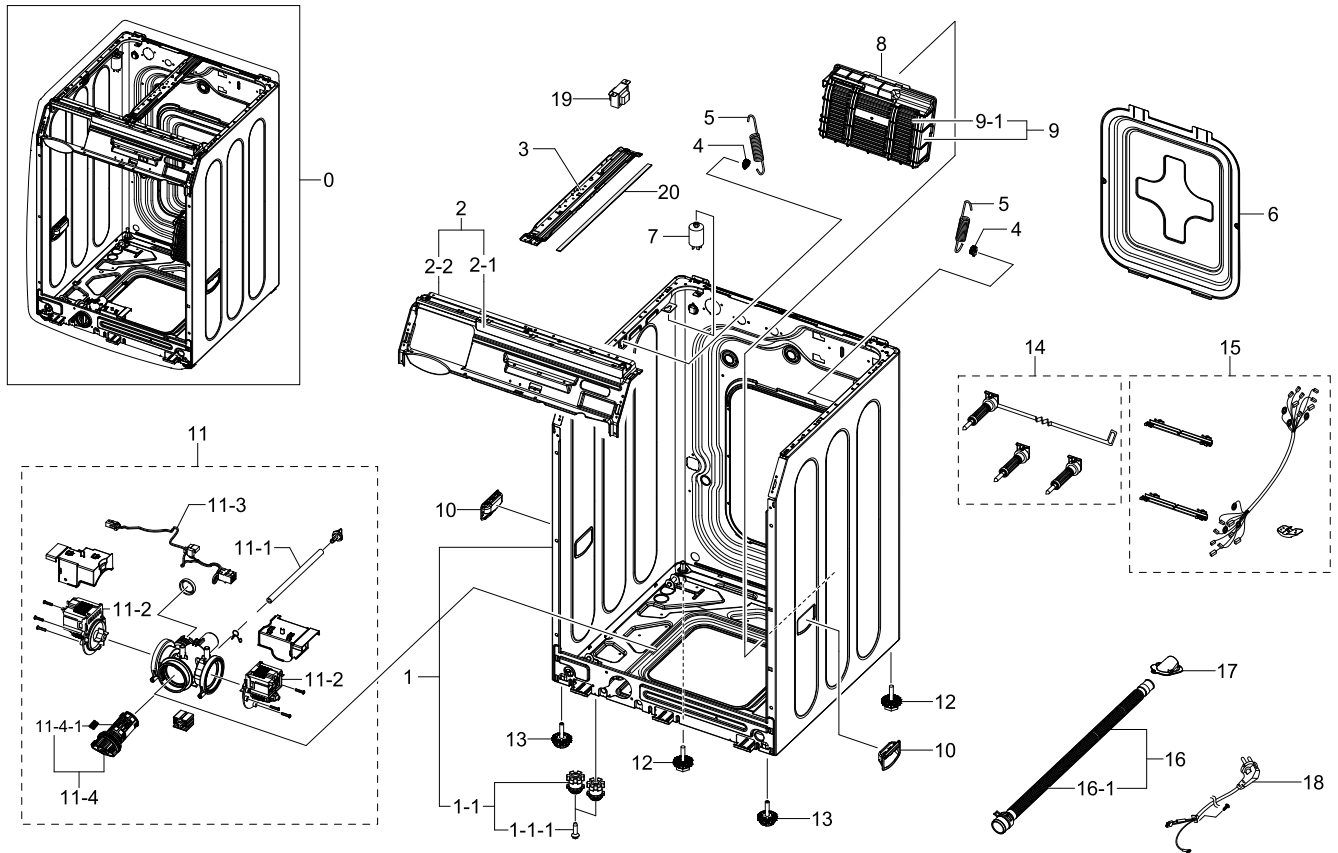
No.	Lvl.	Loc.	Material Code	Description & Specification	SNA	Qty.
1	2	WF0004	DC97-16918E	ASSY FRAME; YUKON-GLOBAL,WF431ABP/XEU,INO	SNA	1
2	2	WF0003	DC97-16941Y	ASSY COVER TOP; YUKON-GLOBAL,WF431ABP/XEU	SA	1
3	2	WD0003	DC97-16099Q	ASSY DOOR; YUKON-K,WR-PP179CS,EP HINGE,CR	SA	1
4	2	WF0005	DC97-15331R	ASSY FRAME FRONT; YUKON-GLOBAL,WD1142*,IN	SA	1
5	2	WI0012	DC97-15330E	ASSY COVER FILTER; PURPLE-LATIN,WF448AAP,	SA	1
6	2	WC0016	DC97-16615K	ASSY PANEL CONTROL; YUKON GLOBAL,WF431ABP	SNA	1
7	2	WR0005	DC97-16619D	ASSY DRAWER; YUKON-GLOBAL,WD1102XVM/XSA	SA	1
8	2	WR0008	DC97-14522R	ASSY HOUSING DRAWER; YUKON-GLOBAL,WF431AB	SNA	1

Exploded Views and Parts List

No.	Lvl.	Loc.	Material Code	Description & Specification	SNA	Qty.
9	2	WT0007	DC97-14540Y	ASSY TUB BACK; PURPLE-K,WW-/WASH/HCH BEAR	SNA	1
10	2	WA0002	DC98-01495B	ASSY ACCESSORY; YUKON-GLOBAL,WF431ABP/XEU	SNA	1
10-1	3	WJ5077	DC60-40146A	BOLT SPANER; CR,T2.5,-	SA	1
10-2	3	WH5379	DC62-10278A	HOSE HANGER; PUMP MODEL,PP,BLACK	SA	1
10-3	3	WA5001	DC67-00307A	CAP-FIXER; WF438AAC/XAA,PP,T1.5,RECYCLE,B	SC	5
10-4	3		DC97-16947A	ASSY HOSE WATER; YUKON-GLOBAL,WF431	SC	1
11	2	WT0008	DC97-17099L	ASSY TUB FRONT; YUKON-GLOBAL,WF431ABP/XEU	SNA	1
12	2	WG0004	DC97-14380C	ASSY DRUM; PURPLE-PJT,WF448	SA	1

2. Frame&Cover Parts

Exploded View



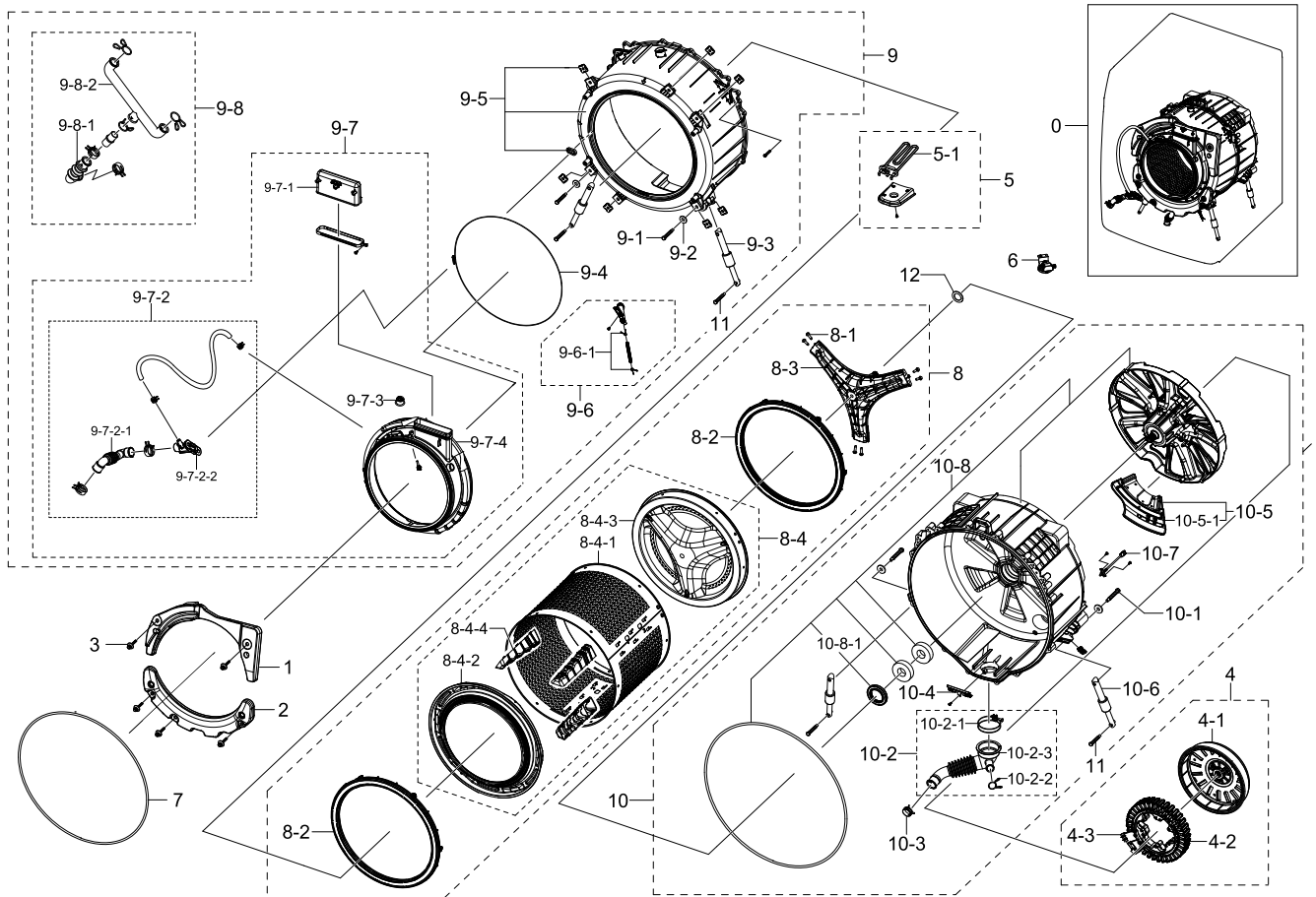
Parts List

No.	Lvl.	Loc.	Material Code	Description & Specification	SNA	Qty.
1	2	WF0004	DC97-16918E	ASSY FRAME; YUKON-GLOBAL,WF431ABP/XEU,INO	SNA	1
1-1	3	WF0015	DC97-14603K	ASSY PLATE BOTTOM; YUKON,WF501ANW/XAA,T1.	SNA	1
1-1-1	4	WX0555	6011-001565	BOLT-HEX; M6,L35.1,ZPC(WHT),SWCH25K,TAPPI	SA	2
2	2	WF0008	DC97-14843E	ASSY FRAME PLATE(U); YUKON-BEST,WF461	SA	1
2-1	3	WI0235	DC61-02008B	GUIDE PANEL; WF438AAW,PP,T2.0,FC2305/NTR,	SA	1
2-2	3	WF0088	DC61-02012B	FRAME PLATE-UP; WR-PA179UR,GI-SGCC,T1.6,W	SA	1
3	2	WI0278	DC61-01200B	GUIDE WIRE; WF206LNW,GI-SGCC,T0.8,MARS-PJ	SA	1
4	2	WI0266	DC61-02432A	GUIDE SPRING; WF419AAW,POM,T2.0,W81.5,L36	SA	2
5	2	WF0102	DC61-01257N	SPRING ETC-HANGER; GRACE-S PJT,SWP,CD4.5,	SNA	2
6	2	WF0042	DC63-00522A	COVER BACK; GW-PJT,GI,T0.4,W426,L507.7,-,	SA	1

No.	Lvl.	Loc.	Material Code	Description & Specification	SNA	Qty.
7	2		DC29-00015G	FILTER EMI; LFT-215G,250V,15,53*53*97,50/	SA	1
8	2	WZ0010	DC92-00658L	ASSY PCB MAIN; YUKON-GLOBAL,UK,Y,SMPS	SA	1
9	2	WI0017	DC92-00732A	ASSY COVER PCB(M); YUKON-BEST,WF461,N	SA	1
9-1	3	WI0196	DC63-01379A	COVER-PCB(M); WF461,PP,-,W305.6,L181.9,-,	SA	1
10	2	WI5047	DC97-15854E	ASSY HANDLE; ACE,DRUM WASHER,DARK-GREY	SA	2
11	2		DC96-01585Z	ASSY PUMP DRAIN; YUKON GLOBAL,230V	SA	1
11-1	3	WH5224	DC67-00244A	HOSE DRAIN; HOSE-DRAIN,EPDM,ID6,OD11,T2.5	SA	1
11-2	3	WU5008	DC31-00030A	PUMP-DRAIN; B20-6 / S3001,220V-240V,50Hz,	SA	2
11-3	3		DC93-00150C	ASSY M. WIRE HARNESS-PUMP; YUKON-BEST,120	SA	1
11-4	3	WA0006	DC97-16991B	ASSY FILTER; DRUM W/M,CLICK HANDLE-FILTER	SA	1
11-4-1	4		DC61-03589A	SPRING ETC; YUKON-2K,STAINLESS-ST304	SA	1
12	2		DC97-00920S	ASSY LEG; WM PW01 FWM MODEL,K4	SA	2
13	2		DC97-14293D	ASSY LEG; WM PW01 FWM MODEL,K4	SNA	2
14	2	WJ5006	DC97-14489A	ASSY FIXER TUB; PURPLE-PJT,WF438AAC/XAA,-	SA	3
15	2	WW0026	DC93-00251G	ASSY M.GUIDE WIRE HARNESS; YUKON-GLOBAL,W	SA	1
16	2	WH5029	DC97-12534D	ASSY HOSE DRAIN(I); -,WF448AAW,BLOW-SPIRA	SA	1
16-1	3	WJ5075	DC61-01679A	CLAMPER HOSE; SEW-HFR177AR,SK5,-,T1.6/ID3	SA	1
17	2		DC61-02084A	GUIDE HOSE; PURPLE,PP,T2.0,-,RM60BK,BLACK	SA	1
18	2	WE0016	DC90-11229B	ASSY POWER CORD; BSI,BF3,250V13A,H05VV-F,	SA	1
19	2	WE0145	DC26-00009D	TRANS-REACTORV; SEW-3HR105,220V-240V,3A,2	SA	1
20	2	WO0067	DC72-00012L	ABSORBER SPONGE; PURPLE-PJT,PE-FOAM,T33,W	SA	1

3. Assy Tub&Drum

Exploded View



Parts List

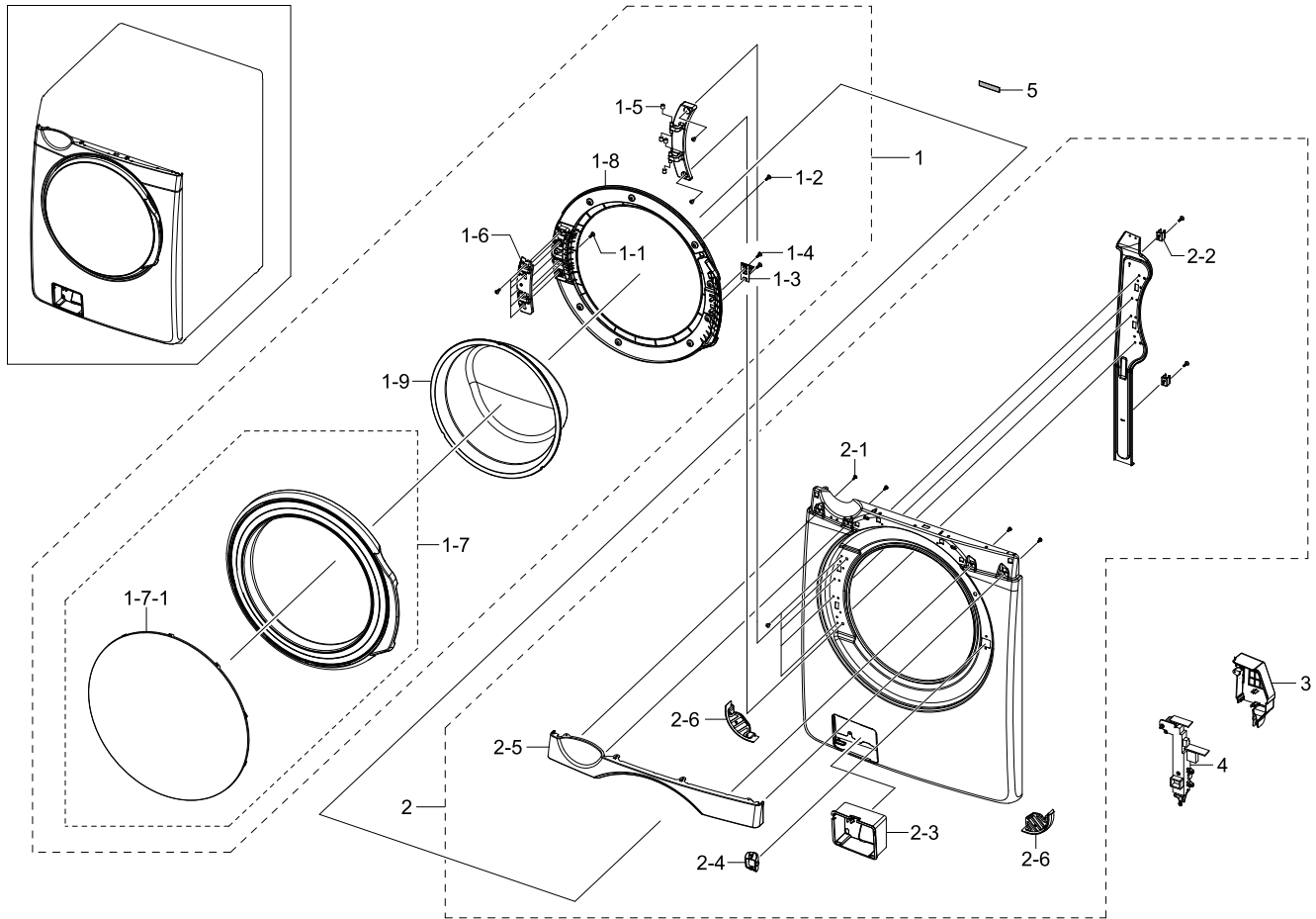
No.	Lvl.	Loc.	Material Code	Description & Specification	SNA	Qty.
0	1	WM0006	DC90-09359A	ASSY PAINT; YUKON-GLOBAL,WF431ABP/XEU	SNA	1
1	2		DC67-00597A	WEIGHT BALANCER; WF461,CONCRETE,BLACK,PP+	SA	1
2	2		DC67-00621A	WEIGHT BALANCER; -,PP+CONCRETE,T46,L580,N	SA	1
3	2	WJ5042	DC97-02412A	ASSY BOLT; SWF-P12,MOTOR/ M8*L62,-,-,-,-	SA	5
4	2	WS0004	DC93-00168A	ASSY DD BLDC MOTOR; BIG-BANG(U.S),COM1500	SA	1
4-1	3	WS0085	DC31-00112A	MOTOR BLDC-ASSY ROTOR; COM1500P,1200,220-	SA	1
4-2	3	WS0086	DC31-00111A	MOTOR BLDC-ASSY STATOR; COM1500P,1200,220	SA	1
4-3	3	WE0111	DC31-00098A	MOTOR BLDC-ASSY HALL SENSOR; COM1300,1200	SA	1

No.	Lvl.	Loc.	Material Code	Description & Specification	SNA	Qty.
5	2	WE0010	DC96-01417H	ASSY HEATER; WD0150VDX/XSG,NORMAL HEATER	SNA	1
5-1	3	WE0092	DC47-00006V	HEATER; SU8E6547-V,-,SUS 316L,2000W,8.26~	SA	1
6	2	WE0020	DC96-01703B	ASSY SENSOR PRESSURE; PURPLE PJT,PURPLE P	SA	1
7	2	WJ0008	DC97-04973B	ASSY WIRE DIAPHRAGM; SEW-HFR167AR,STS304(SA	1
8	2	WG0004	DC97-14380C	ASSY DRUM; PURPLE-PJT,WF448	SA	1
8-1	3	WJ5081	DC60-40137A	BOLT HEX; MARS-PJT,STAINLESS-STS430,M8,P1	SA	6
8-2	3	WT5011	DC97-12135A	ASSY BALANCER; ZEUS-PJT,-,-,-,-	SA	2
8-3	3	WS0006	DC97-16509B	ASSY FLANGE SHAFT; Purple-PJT,WF448	SA	1
8-4	3	WG0007	DC97-14575C	ASSY DRUM WRAPPER; PURPLE,WF448AAW	SA	1
8-4-1	4	WG0057	DC66-00505B	DRUM WRAPPER; WF448AAW,STAINLESS-STS430J1	SNA	1
8-4-2	4	WG0054	DC66-00506A	DRUM FRONT; PURPLE PJT,STAINLESS-STS430,T	SNA	1
8-4-3	4	WG0053	DC66-00507A	DRUM BACK; PURPLE-PJT,STAINLESS-STS430,T	SNA	1
8-4-4	4	WG0055	DC66-00508A	DRUM LIFTER; PURPLE- PJT,PP,-,-,-,CP,-	SA	3
9	2	WT0008	DC97-17099L	ASSY TUB FRONT; YUKON-GLOBAL,WF431ABP/XEU	SNA	1
9-1	3	WJ5079	DC60-40141A	BOLT HEX; SM10C,HEX,L66,ZPC2(YEL),M8,ZPC2	SA	2
9-2	3	WJ0083	DC60-60044A	WASHER PLAIN; SWRCH18A,ID10.5,OD30,T3	SNA	2
9-3	3	WB5199	DC66-00343F	DAMPER SHOCK; GW-PJT,STEEL+PP+RUBBER,WHT	SA	2
9-4	3	WJ0002	DC97-04981F	ASSY CLAMP DIAPHRAGM; PURPLE,WF448AAW,-,-	SA	1
9-5	3	WT0004	DC97-14541R	ASSY SEMI TUB FRONT; YUKON-GLOBAL,-	SA	1
9-6	3	WH0003	DC97-14545F	ASSY HOSE PRESSURE; PURPLE	SA	1
9-6-1	4	WP0165	DC61-70029C	CLIP RING; SEW-HW125,HSWR,WHITE	SA	2
9-7	3	WJ0004	DC97-14560T	ASSY DIAPHRAGM; YUKON-GLOBAL,WF431ABP/XEU	SA	1
9-7-1	4	WI0106	DC67-00318A	CAP DIAPHRAGM; -,FRPP,T2.5,W161.1,-,H81,N	SA	1
9-7-2	4		DC97-15411F	ASSY HOSE AIR; PURPLE COMBO,WD0150VDX/XSG	SA	1
9-7-2-1	5	WH5201	DC67-00373A	HOSE AIR TUB; SEW-HPR189ATS,EPDM,ID25,OD3	SA	1
9-7-2-2	5	WH5207	DC67-00353A	HOSE CONNECTOR; SEW-HAR149AUA,FRPP,NTR	SA	1
9-7-3	4		DC47-00027E	LAMP; SW5315E-G,OD6.10.5mm,H8.60.2mm,	SA	1
9-7-4	4	WD0067	DC64-01810D	DOOR DIAPHRAGM; WF431ABP/XEU,EPDM,GRAY	SA	1
9-8	3	WH5386	DC97-15314B	ASSY HOSE AIR; PURPLE K-PJT,WR-PA179UR	SA	1

No.	Lvl.	Loc.	Material Code	Description & Specification	SNA	Qty.
9-8-1	4	WH0011	DC67-00413A	HOSE AIR PUMP; WR-PA179UR,EPDM,ID19.7,OD2	SA	1
9-8-2	4	WH5193	DC67-00412A	HOSE AIR TUB; WR-PA179UR,EPDM,ID19,OD25,T	SA	1
10	2	WT0007	DC97-14540Y	ASSY TUB BACK; PURPLE-K,WW-/WASH/HCH BEAR	SNA	1
10-1	3	WJ5079	DC60-40141A	BOLT HEX; SM10C,HEX,L66,ZPC2(YEL),M8,ZPC2	SA	2
10-2	3	WH0023	DC97-15298A	ASSY HOSE DRAIN; PURPLE,-,-,-,-	SA	1
10-2-1	4	WJ5057	DC65-00014A	CLAMPER HOSE-JOINT; GW-PJT,HSWR-SWRH,-,ZP	SA	1
10-2-2	4	WJ0027	DC65-60125B	CLIP RING; HSWR-SWRH,PI2.4,ID25,-	SNA	2
10-2-3	4	WH5212	DC67-00312A	HOSE FILTER TUB; WF438AAG,EPDM,T2.0,BLACK	SNA	1
10-3	3		DC61-00219D	CLAMPER HOSE; SW-50A1S,SK5,-,MFZNT	SNA	1
10-4	3	WP0099	DC61-01482A	BRACKET HEATER; GW-PJT,STAINLESS-ST5430,T	SNA	1
10-5	3	WP0040	DC97-16510A	ASSY BRACKET TUB; GRACE-PJT,WF520ABP	SNA	1
10-5-1	4	WP0146	DC61-02006A	BRACKET-TUB; PURPLE,GI-SGCC,T0.35	SA	1
10-6	3	WB5199	DC66-00343F	DAMPER SHOCK; GW-PJT,STEEL+PP+RUBBER,WHT	SA	2
10-7	3	WE5044	DC90-10128N	ASSY THERMISTOR; 5V	SA	1
10-8	3	WT0002	DC97-14604T	ASSY S.TUB BACK; PURPLE-K,WW-,WASH,HCH BE	SA	1
10-8-1	4	WS0119	DC62-00156A	SEAL OIL; TS85-PJT,NBR(OD84),BLK,-,-,-,JI	SA	1
11	2	WX0558	6011-001644	BOLT-HEX; M10,L35,ZPC2,SM10C,DAMPER	SA	4
12	2	WJ0109	6031-001640	WASHER-SPRING; STS,-,ID35.2,OD39.0,T0.3,-	SNA	1

4. Assy Frame Front&Door

Exploded View



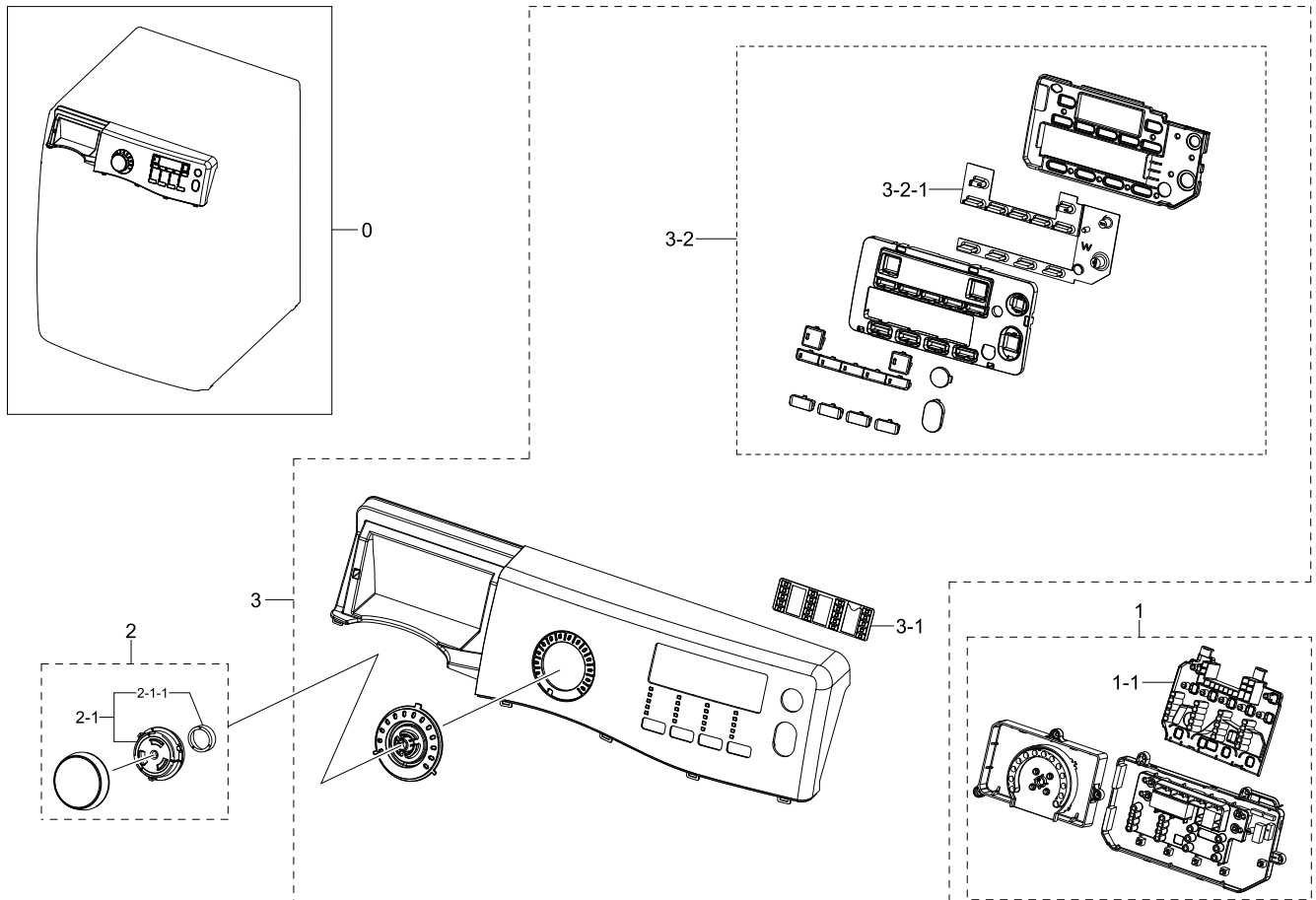
Parts List

No.	Lvl.	Loc.	Material Code	Description & Specification	SNA	Qty.
1	2	WD0003	DC97-16099Q	ASSY DOOR; YUKON-K,WR-PP179CS,EP HINGE,CR	SA	1
1-1	3	WX0403	6001-001668	SCREW-MACHINE; TH,+,M5,L16,PASS,STS430,FP	SA	1
1-2	3	WX0621	6002-000444	SCREW-TAPPING; TH,+,2,M4,L14,PASS,STS430	SA	15
1-3	3	WD0114	DC66-00375A	LEVER DOOR; 10KG DRUM,ZNDC,T2.5,-,-,-,N	SC	1
1-4	3	WX0465	6002-001279	SCREW-TAPPING; PWH,+, -,1,M4,L12,PASS,STS3	SA	2
1-5	3	WD0090	DC61-00891A	GUIDE HINGE; HAUZEN(DOM),POM,-,-,-,WHT,HI	SA	4
1-6	3	WD0134	DC61-01576A	SUPPORT HINGE; FRONTIER-PJT,GI-SGCC,T1.4,	SA	1
1-7	3	WD0001	DC97-16100A	ASSY COVER DOOR; SQUALL,WF350ANW/XAA	SA	1

No.	Lvl.	Loc.	Material Code	Description & Specification	SNA	Qty.
1-7-1	4	WD0079	DC64-02215A	DOOR SAFETY; WF350ANW,PCTG,W491,SQUALL	SA	1
1-8	3	WD0104	DC61-01972A	HOLDER GLASS; PURPLE-PJT,PP,T2.8,GRY,FC23	SA	1
1-9	3	WD0070	DC64-00504C	DOOR GLASS; ALL MODEL,GLASS,ARC/SODALIME	SA	1
2	2	WF0005	DC97-15331R	ASSY FRAME FRONT; YUKON-GLOBAL,WD1142*,IN	SA	1
2-1	3	WX0419	6002-000239	SCREW-TAPPING; TH,+,NO,2S,M4,L8,ZPC(WHT),	SA	7
2-2	3	WH0010	DC61-01081A	HOLDER HOSE; Q1636,PA,T1.5,NTR,TS-2 PJT	SA	2
2-3	3	WI0241	DC61-02198A	GUIDE COVER FILTER; WF448AAP,PP,T2.5,W151	SA	1
2-4	3	WE0064	DC63-00960A	COVER-SWITCH(O); WF218,POM,T3,NATURAL,DOO	SA	1
2-5	3	WF0053	DC64-02628A	DECORATION-FRONT; WF431ANW,ABS,W684,L72.8	SA	1
2-6	3	WI0171	DC63-00959A	COVER FRONT; WF448AAP,PP,-,W18.7,L36.7,-,	SA	2
3	2	WE0059	DC63-01356A	COVER DOOR SWITCH; WR-DA157UW,PP,-,-,-,-,	SA	1
4	2	WE0165	DC34-00024A	SWITCH DOOR-LOCK; AC250V,16A	SA	1
5	2	WO0062	DC72-00015L	ABSORBER SPONGE; WF448AAW,PE-FOAM,T9.0,W7	SA	1

5. Assy Panel Control

Exploded View



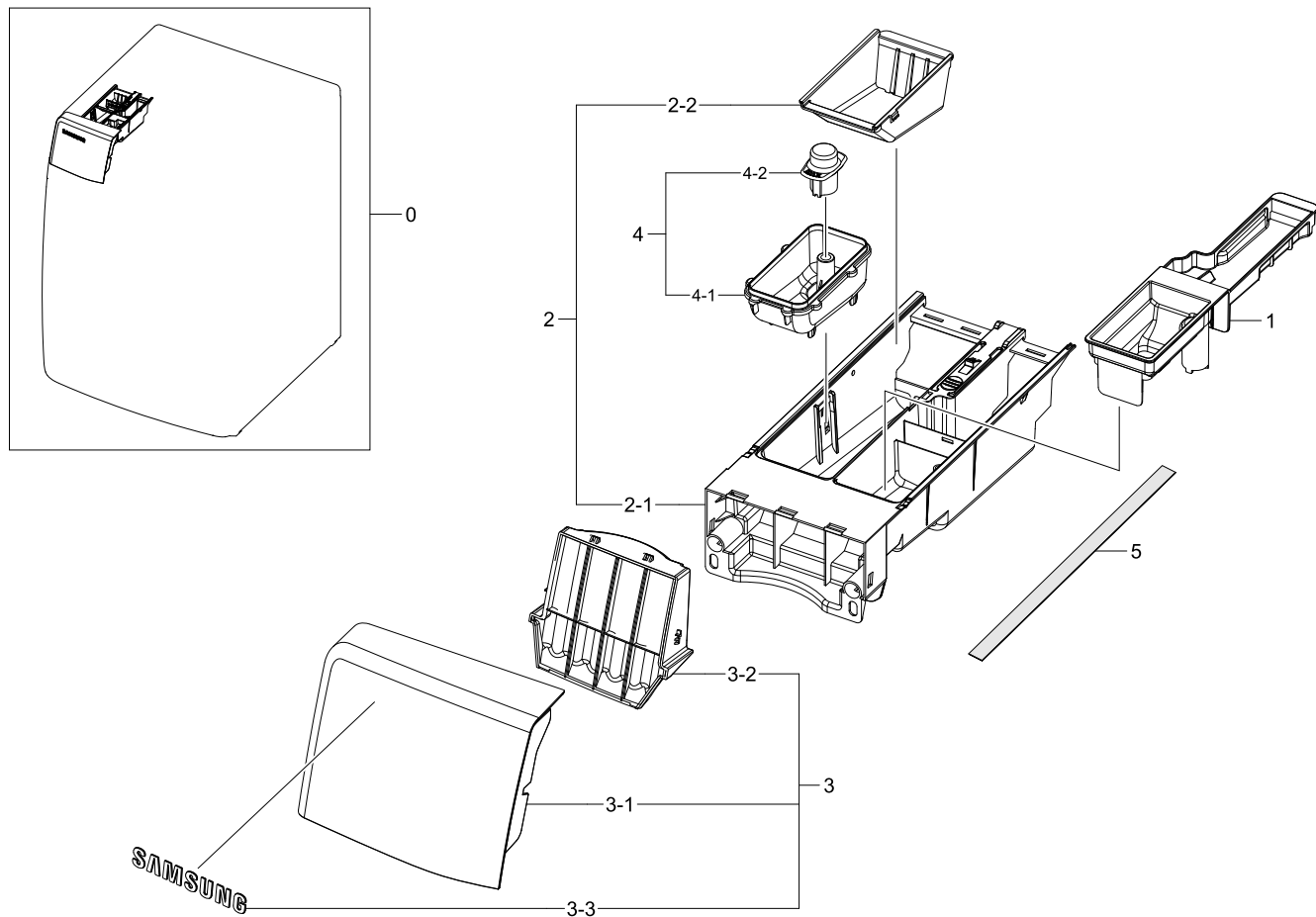
Parts List

No.	Lvl.	Loc.	Material Code	Description & Specification	SNA	Qty.
0	2	WC0016	DC97-16615K	ASSY PANEL CONTROL; YUKON GLOBAL,WF431ABP	SNA	1
1	3	WZ0025	DC92-00773G	ASSY PCB SUB; YUKON GLOBAL SUB,Washer,220	SA	1
1-1	6	WC0088	DC61-03195A	GUIDE LED; WF431,HIPS,W158.7,L122.3,H22.7	SA	1
2	3	WC0009	DC97-17292A	ASSY KNOB ENCODER; YUKON,WD175ACYKSU	SNA	1
2-1	4	WC0101	DC64-02768C	KNOB ENCODER; SQUALL Jr,ABS,GRAY	SNA	1
2-1-1	5		DC67-00680A	WEIGHT-KNOB; WD175ACYKSU,HGI/SM20C	SA	1
3	3	WC0018	DC97-17695B	ASSY S.PANEL CONTROL; WF431ABP/XEU,ENGLIS	SNA	1
3-1	4	WC0154	DC64-02631A	DECORATION-LED(S); WF431,ABS+PMMA,-,HB,GR	SA	1

No.	Lvl.	Loc.	Material Code	Description & Specification	SNA	Qty.
3-2	4	WC0001	DC97-16617H	ASSY BUTTON; YUKON GLOBAL,WF431ABP/XEU,IN	SA	1
3-2-1	5	WC0059	DC64-02671A	BUTTON RUBBER; WF431,SILICON,Transparency	SA	1

6. Assy Drawer

Exploded View



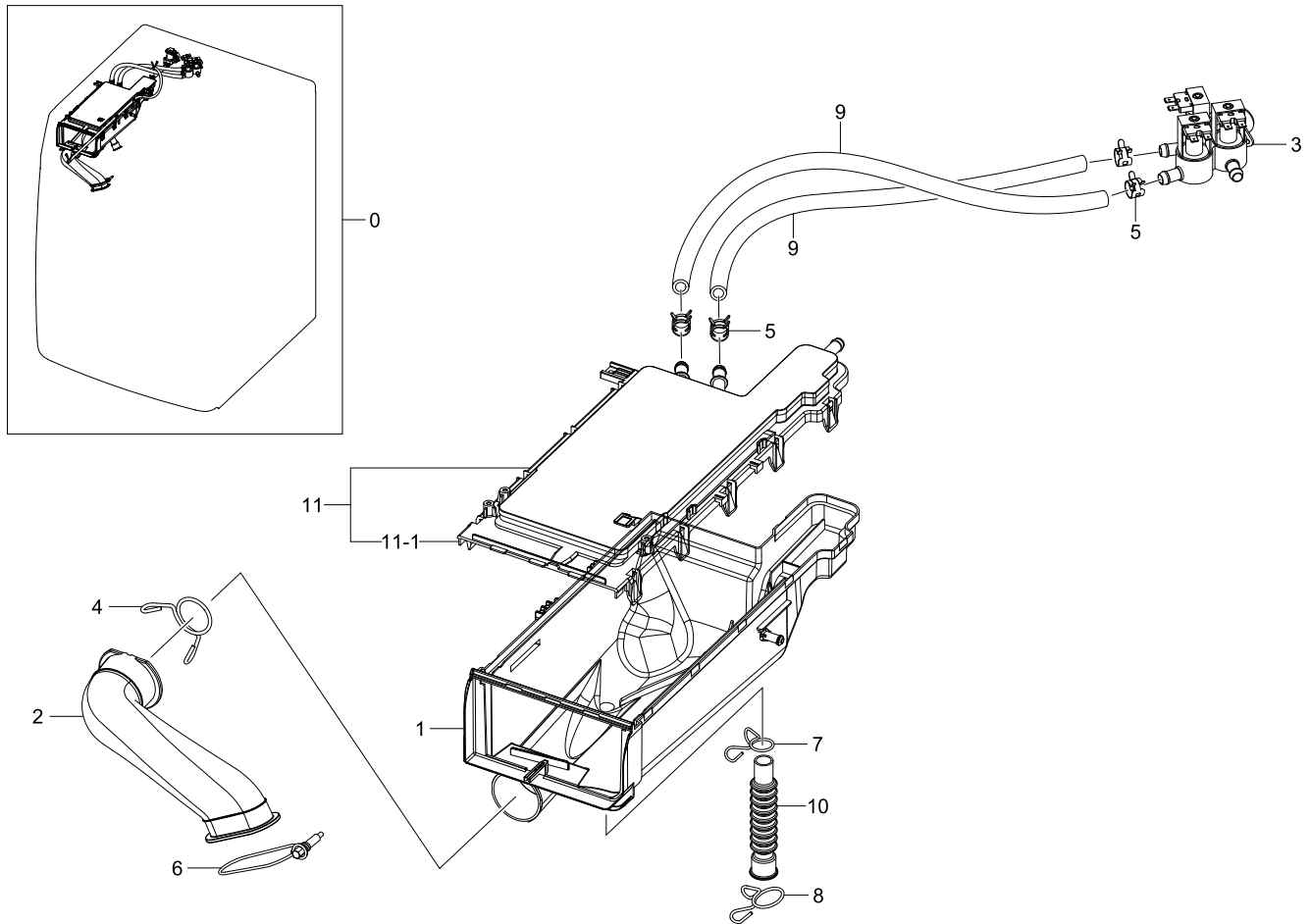
Parts List

No.	Lvl.	Loc.	Material Code	Description & Specification	SNA	Qty.
0	2	WR0005	DC97-16619D	ASSY DRAWER; YUKON-GLOBAL,WD1102XVM/XSA	SA	1
1	3	WI0125	DC67-00370C	CAP RINSE; WD1102XVM/XSA,PP,T2.0,W60.5,L2	SA	1
2	3	WR0011	DC97-16898A	ASSY S.DRAWER; YUKON-GLOBAL,WD1102XVM/XSA	SA	1
2-1	4	WR0029	DC61-01992F	BODY DRAWER; PP,T2.0,L327.5,W149.4,WHITE,	SA	1
2-2	4	WI0144	DC61-02445A	CASE PRE WASH; ACE-PJT,PP,T1.8,WHT,TB53	SA	1
3	3	WC0017	DC97-16620F	ASSY PANEL DRAWER; YUKON-GLOBAL,WD1102XVM	SA	1
3-1	4	WC0120	DC64-02632A	PANEL DRAWER; WF393BTPAWR,ABS,W225.4,L162	SA	1
3-2	4	WC0080	DC64-02633A	DECORATION PANEL DRAWER; WF431,ABS,W140.3	SA	1

No.	Lvl.	Loc.	Material Code	Description & Specification	SNA	Qty.
3-3	4	WC0114	DC64-02707A	MASCOT; WF431 / DV431,NICKEL,T0.06,W80,L1	SC	1
4	3	WR0004	DC97-17022B	ASSY DETERGENT; YUKON,WD1102XVM/XSA,PP,EN	SA	1
4-1	4	WI0353	DC61-02427D	GUIDE LIQUID-MIDDLE; WD1102XVM/XSA,PP,T2.	SA	1
4-2	4	WI0108	DC67-00420A	CAP DRAWER; WF419HAW,PP,T2.0,W43,L38,WHT,	SC	1
5	2	WO0067	DC72-00012P	ABSORBER SPONGE; WF448AAP,PU-FOAM,T3,W80,	SA	1

7. Assy Housing Drawer

Exploded View




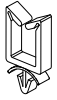

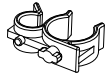



Parts List

No.	Lvl.	Loc.	Material Code	Description & Specification	SNA	Qty.
0	2	WR0008	DC97-14522R	ASSY HOUSING DRAWER; YUKON-GLOBAL,WF431AB	SNA	1
1	3	WR0039	DC61-01987B	HOUSING DRAWER-LOW; WF438AAW,PP,T1.8,WHT,	SA	1
2	3	WH5211	DC67-00317A	HOSE DRAWER TUB; WF448AAW,EPDM,ID49,OD58,	SA	1
3	3	WE5155	DC62-00024F	VALVE WATER; 220-240,10,D-2	SC	1
4	3	WJ0027	DC72-00001A	CLIP RING; DRUM-MODEL,HSWR-SWRH,YEL,ID49.	SA	1
5	3		DC65-00008A	CLAMPER HOSE; SEW-DR605,SK5,-,ID14.2/T0.9	SNA	4
6	3		DC65-00020A	CLAMPER HOSE-JOINT; WF448AAW,HSWR-SWRH,-,	SNA	1
7	3	WJ0027	DC65-60118N	CLIP RING; SEW-5HW116,HSWR-SWRH,T2.0,ZPC2	SNA	1

No.	Lvl.	Loc.	Material Code	Description & Specification	SNA	Qty.
8	3	WJ0027	DC65-60125B	CLIP RING; HSWR-SWRH,PI2.4,ID25,-	SNA	1
9	3	WH5267	DC67-00051B	HOSE DRAWER; Q1636GW/XEU,EPDM,ID9.0,OD14.	SA	1
10	3	WH5217	DC67-00275A	HOSE AIR; SEW-HTR122L,EPDM,ID21,BLACK	SA	1
11	3	WR0012	DC97-16597C	ASSY S.HOUSING DRAWER; YUKON-GLOBAL,WF431	SA	1
11-1	4	WR0040	DC61-03026C	HOUSING DRAWER-MIDDLE; WF431ABP/XEU,PP,NT	SA	1

8. Small Parts

Exploded View

						
1	2	3	4	5	6	7

Parts List

No.	Lvl.	Loc.	Material Code	Description & Specification	SNA	Qty.
1	4	WI0293	DC61-01736B	HOLDER WIRE; WF337AAW,PA,T2.3,NATURAL,-	SA	2
2	2	WI0294	DC61-00553B	HOLDER-WIRE SADDLE; PA,NTR,NYLON66	SA	3
3	2	WI0293	DC61-40081A	HOLDER WIRE; DAWH-2NC,PA,-,NATURAL,-	SA	2
4	2		DC61-00133A	CLAMPER HOSE-FIX; P1291,PP,-,HOSE+PLUG,BJ	SNA	1
5	2		6502-000127	CABLE CLAMP; DAWH-18NB,ID15,-,NYLON66,NTR	SNA	2
6	2		DC61-00118A	CLAMPER HOSE-FIX; P1291,PA66,ID27,OD30	SNA	1
7	3	WI0294	DC61-00553C	HOLDER-WIRE SADDLE; PA,NTR,NYLON66	SA	1