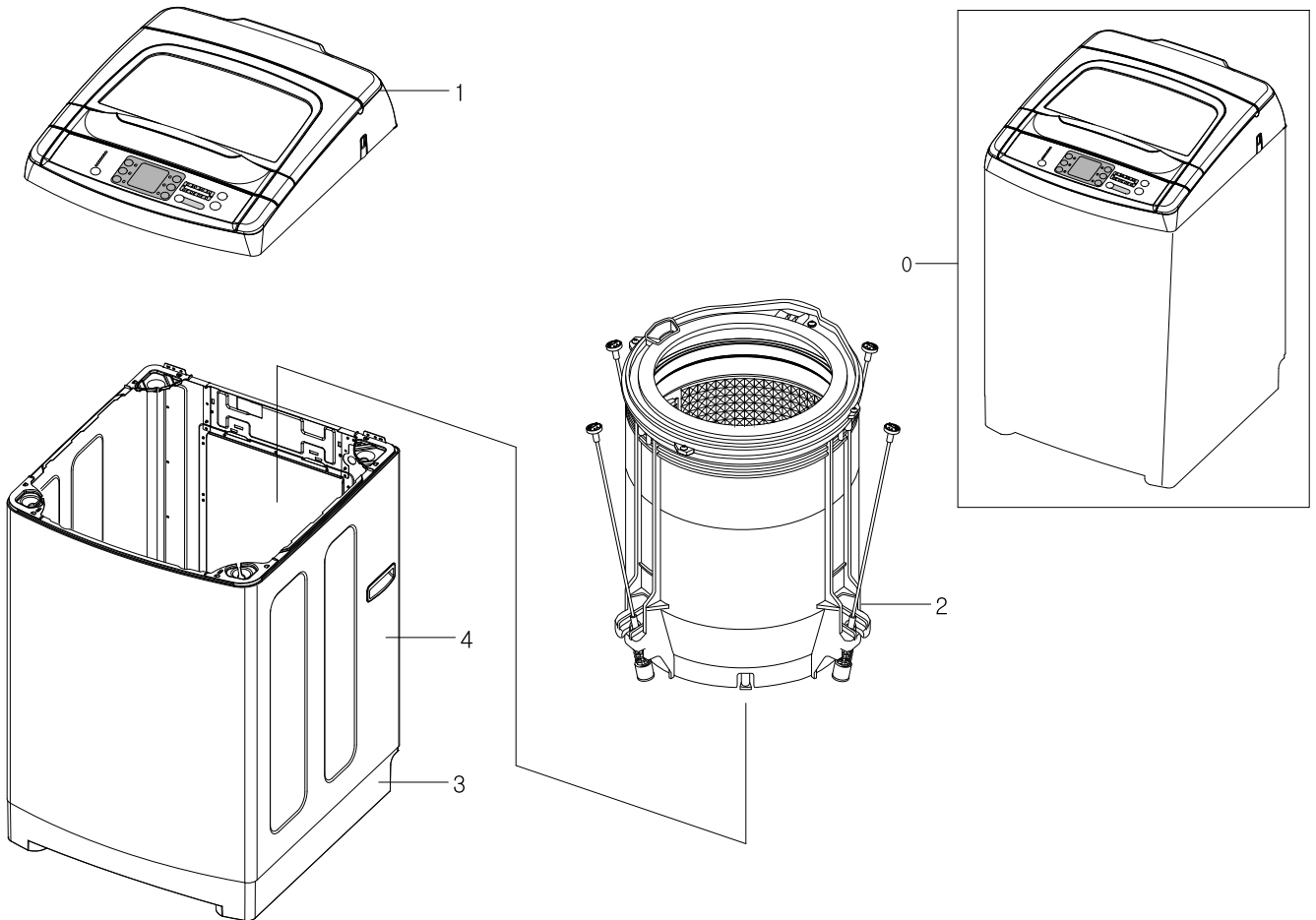


1. Main

Exploded View

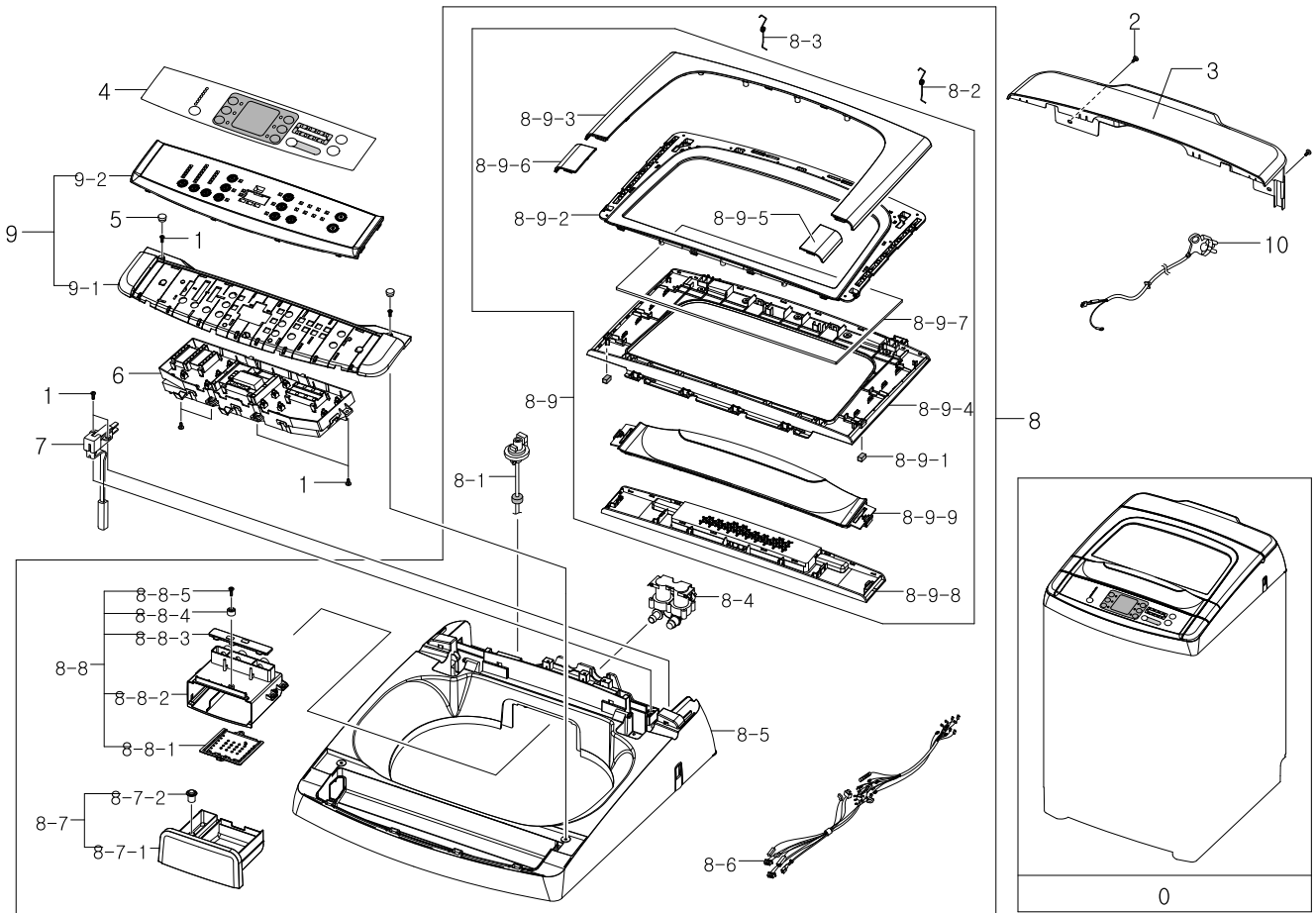


Parts List

No.	Lvl.	Loc.	Material Code	Description & Specification	SNA	Qty.
1	1	P0001	DC90-12418A	ASSY COVER TOP; PACIFIC-PJT,BTT 8 KG,WA10	SNA	1
2	1	U0011	DC90-12420A	ASSY TUB; PACIFIC 8 KG./BTT,230V~50HZ,PUM	SNA	1
3	1	B0012	DC90-06206B	ASSY BASE; PSD 8~10 KG/LOW BASE,PUMP/PP-C	SA	1
4	1	F0028	DC97-12769K	ASSY FRAME; POSEIDON 8-10 KG,PUMP,-,-,-,D	SA	1

1.1. Assy Cover Top

Exploded View



Parts List

No.	Lvl.	Loc.	Material Code	Description & Specification	SNA	Qty.
0	1	P0001	DC90-12418A	ASSY COVER TOP; PACIFIC-PJT,BTT 8 KG,WA10	SNA	1
1	2	Z0062	6002-001306	SCREW-TAPPING; TH,+,1,M4,L14,ZPC(WHT),SWR	SA	4
2	2	Z0062	6002-001308	SCREW-TAPPING; TH,+,-,1,M5,L20,ZPC(WHT),S	SA	4
3	2	P0051	DC63-01520E	COVER-T.C; PACIFIC-PJT,8~10 KG.,ABS,DA-WH	SA	1
4	2	A0242	DC64-02751X	INLAY-PANEL; WA10(13)W9DIP/YGG,PET,T0.25,	SNA	1
5	2	D0117	DC67-00347C	CAP-SCREW; POSEIDON2-PJT,SILICON,W13.3,L1	SNA	2
6	2	Y0178	DC92-00818Q	ASSY PCB MAIN; PACIFIC,BTT 8 KG./H+C,230-	SA	1
7	2	M0011	DC96-00156E	ASSY CHECKER S/W; DC 5V,NO COVER/PUSH-18T	SA	1

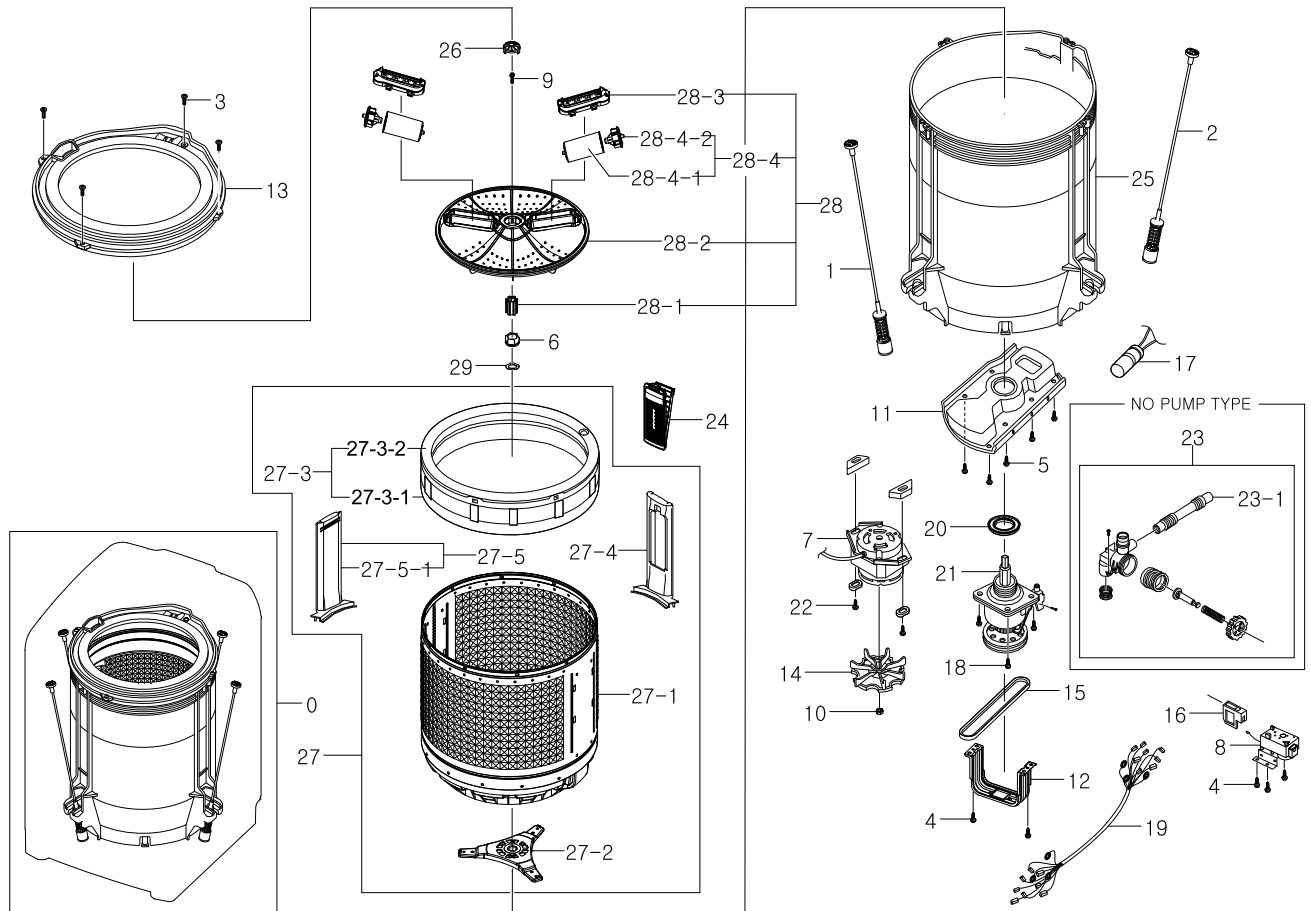
No.	Lvl.	Loc.	Material Code	Description & Specification	SNA	Qty.
8	2	P0010	DC97-16592B	ASSY SEMI COVER TOP; GAIA-PJT,BTT 8KG/H+C	SA	1
8-1	2	Q0005	DC32-30006V	SENSOR PRESSURE; DN-S23,BP8-PJT,8KG,5,5,D	SA	1
8-2	3	A0348	DC61-00146G	SPRING ETC-Q(L); POSEIDON2-PJT,HSWR-SWRH,	SNA	1
8-3	3	A0349	DC61-00146F	SPRING ETC-Q(R); POSEIDON2-PJT,HSWR-SWRH,	SNA	1
8-4	3	W0032	DC62-00024A	VALVE-WATER; SEW-GF100C,PP,-,-,GRY,3-WAY	SA	1
8-5	3	P0053	DC63-01268A	COVER-TOP; GAIA 8~10kg,ABS,W602.5,DA-WHIT	SNA	1
8-6	3	W0004	DC93-00240G	ASSY M. WIRE HARNESS; GAIA-PJT,BTT 8~10 K	SA	1
8-7	3	P0032	DC97-16561B	ASSY CASE DETERGENT; GAIA-PJT,BETTER 8KG,	SA	1
8-7-1	4	P0038	DC61-02882A	CASE-DETERGENT; GAIA 8~10kg,ABS,DA-WHITE	SA	1
8-7-2	4	R0157	DC67-00080J	CAP-RINSE; SEW-3G100A,ABS,PEACOCK/GRN,STA	SA	1
8-8	3	P0026	DC97-16562B	ASSY BODY DETERGENT; GAIA-PJT,BEST 10KG/H	SA	1
8-8-1	4	P0148	DC61-02880A	GUIDE-WATER; GAIA 8~10kg,ABS,NTR	SNA	1
8-8-2	4	P0022	DC61-02881B	BODY-DETERGENT; GAIA-PJT/8-10KG/H+C,ABS,N	SNA	1
8-8-3	4	R0048	DC67-00527A	CAP-GUIDE WATER; GAIA 8~10kg,ABS,NTR	SNA	1
8-8-4	4	R0161	DC62-00048A	SEAL-WATER; -,NBR,PINK,-,-,L6,PI4/T1.0	SNA	1
8-8-5	4	Z0062	6002-000445	SCREW-TAPPING; TH,+2,M4,L18,PASS,STS304	SNA	1
8-9	3	P0041	DC97-16591B	ASSY LID T.C; GAIA-PJT,BTT 8KG,ABS+GLASS,	SA	1
8-9-1	4	P0058	DC61-60044J	CUSHION-LID; SW-46J1,SILICON,T5.5,W8.0,L1	SA	2
8-9-2	4	P0066	DC64-02507A	DOOR LID-T.C(U); GAIA 8~10kg,ABS,DA-WHITE	SNA	1
8-9-3	4		DC64-02508A	DECORATION-LID(U); GAIA 8~10kg,ABS,DA-WHI	SNA	1
8-9-4	4		DC64-02509A	DOOR LID-COVER(U); GAIA 8~10kg,ABS,DA-WHI	SNA	1
8-9-5	4	R0071	DC64-02512A	DECORATION-LID(L); GAIA 8~10kg,ABS,DA-WHI	SNA	1
8-9-6	4	R0070	DC64-02510A	DECORATION-LID(R); GAIA 8~10kg,ABS,DA-WHI	SNA	1
8-9-7	4	D0061	DC64-02541A	DOOR-GLASS; GAIA 8/10kg,GLASS,T4.0,W472,L	SNA	1
8-9-8	4		DC64-02543A	DOOR LID-COVER(L); GAIA 8,10kg,ABS,DA-WHI	SNA	1
8-9-9	4	P0063	DC64-02545A	DOOR LID-T.C(L); GAIA 8kg,ABS,DA-WHITE	SA	1

Exploded Views and Parts List

No.	Lvl.	Loc.	Material Code	Description & Specification	SNA	Qty.
9	2	C0002	DC97-16593C	ASSY PANEL CONTROL; GAIA-PJT,BTT 8KG,DA-W	SA	1
9-1	3	C0082	DC64-02547A	PANEL-CONTROL; GAIA 8kg,ABS,DA-WHITE	SA	1
9-2	3	P0169	DC63-01284A	COVER-PANEL; GAIA 8kg,ABS,T2.5,W510,DA-WH	SA	1
10	2	W0002	DC90-10065B	ASSY POWER CORD; UCP2,250V/7A,-,L182/ONE	SA	1

1.2. Assy Tub

Exploded View



Parts List

No.	Lvl.	Loc.	Material Code	Description & Specification	SNA	Qty.
0	1	U0011	DC90-12420A	ASSY TUB; PACIFIC 8 KG./BTT,230V~50HZ,PUM	SNA	1
1	2	U0141	DC97-05280Q	ASSY DAMPER; GAIA-PJT,8-10KG[RIGHT]/NTR,L	SA	2
2	2	U0141	DC97-05280R	ASSY DAMPER; GAIA-PJT,8-10KG[LEFT]/RED,L5	SA	2
3	2	Z0062	6002-001305	SCREW-TAPPING; TH,+,-,2S,M5,L14.5(9),ZPC(SNA	4
4	2	Z0062	6002-001311	SCREW-TAPPING; HWH,+,-,M6.5,L20,ZPC(WHT),	SA	4
5	2	Z0060	6002-001313	SCREW-HEX; HWH,+,-,M6.5,L25,ZPC(WHT),SWRC	SA	9
6	2	B0076	6021-001222	NUT-HEXAGON FLANGE; 1C,M24,ALDC8,CW,T14	SA	1
7	2	U0334	DC31-00132B	MOTOR INDUCTION-WASHING; POSEIDON 10,WAS2	SA	1

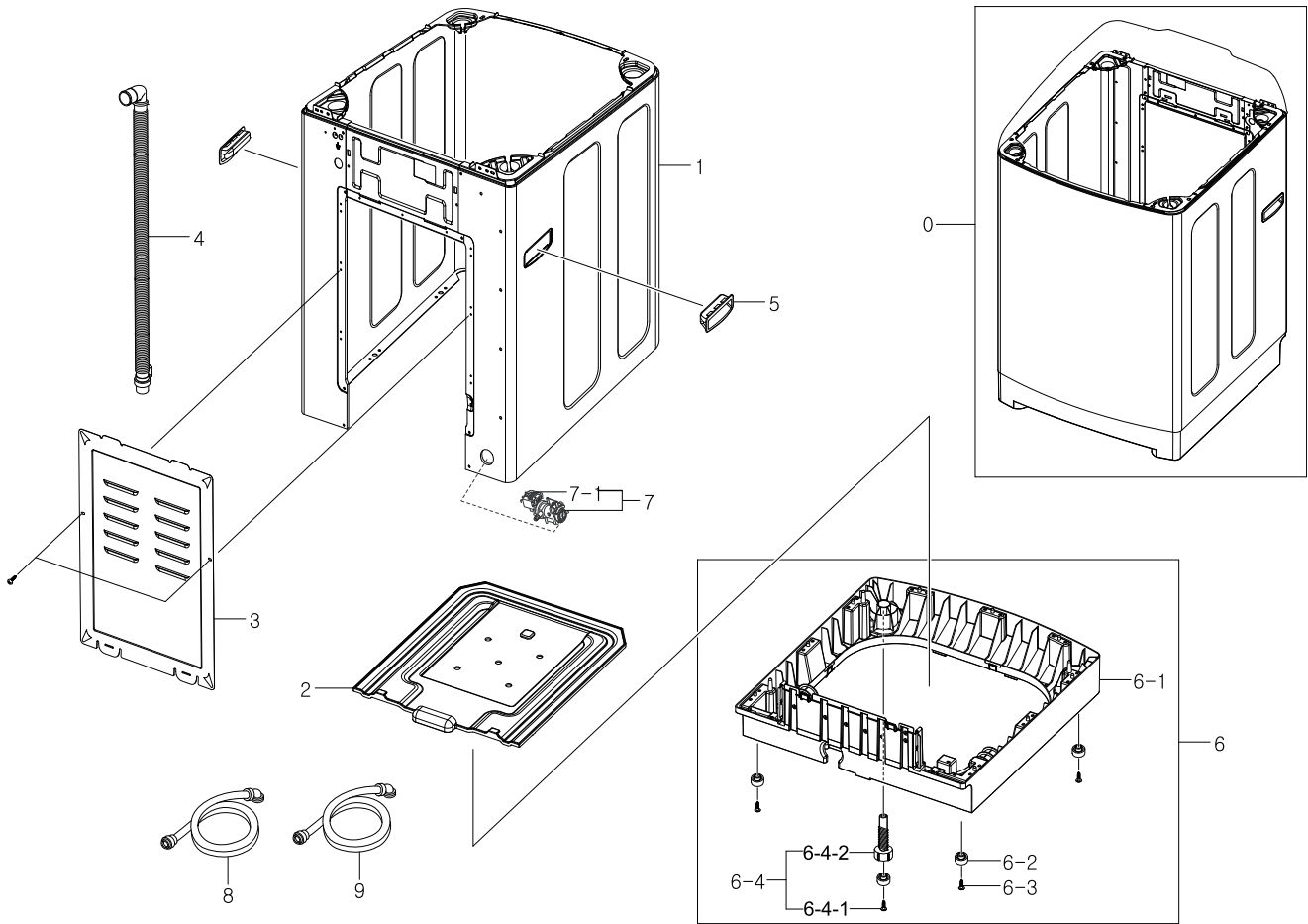
Exploded Views and Parts List

No.	Lvl.	Loc.	Material Code	Description & Specification	SNA	Qty.
8	2	U0344	DC31-20014A	MOTOR DRAIN; KD-SM22TA,220~240V,50Hz~60Hz	SA	1
9	2	U0100	DC60-40133A	BOLT-PULSATOR; AUTOMATIC 8-10kg,STAINLESS	SA	1
10	2	Z0004	DC60-50153A	NUT-HEX; EGI-SECC,M8,FZY	SA	1
11	2	U0136	DC61-01703A	DIE-MOTOR; POSEIDON-PJT,GI-SGCC,T1.8	SA	1
12	2	U0319	DC61-40054B	SUPPORT-SADDLE; SEW-PB10,GI-SGCC,T1.2,357	SA	1
13	2	U0131	DC63-00762A	COVER-TUB; POSEIDON-PJT(8kg),PP,-,-,-,-	SA	1
14	2	U0221	DC66-00480A	PULLEY-MOTOR; POSEIDON-PJT,ALDC,50Hz	SA	1
15	2	U0343	DC66-10142A	BELT-V; STATIC,M22,-,SEW-60FX,-	SA	1
16	2	U0195	DC66-30024A	LINK-DRAIN; PP,L69.5,SEW-PB10	SA	1
17	2	U0342	DC75-00010L	CONDENSER-M.F; 11uF,-25 to 85,BK,450V,5%,	SA	1
18	2	Z0040	DC91-11258E	ASSY SCREW; -, -,SHAFT+DIE-MOTO(COAT),-,M8	SA	4
19	2	W0001	DC96-01369D	ASSY WIRE HARNESS; PSD-PJT/8-10KG,PUMP,UL	SA	1
20	2	U0301	DC97-00623A	ASSY WASHER PLAIN; SEW-524,SEM-NEW,-,-,-,	SA	1
21	2	U0080	DC97-00663D	ASSY SHAFT; TD8-PJT,SEM-10TH/TSE,-,-,-,-	SA	1
22	2	Z0040	DC97-04458D	ASSY SCREW; -,5-6 KG MODEL,-,-,M8*30/FE/F	SNA	2
24	2	U0310	DC97-12773A	ASSY FILTER; POSEIDON-PJT,SAVOY-BLUE,-,-	SA	1
25	3	U0262	DC61-01690B	TUB-OUTER; (PP842J/EP549T)PSD 8-10 Kg,PP,	SA	1
26	2	U0225	DC66-00342F	PULSATOR-CAP; PACIFIC-PJT,ABS,LIGHT SAVOY	SA	1
27	2	S0011	DC97-16566B	ASSY BASKET SPIN; GAIA-PJT,BETTER 8KG/DIA	SA	1
27-1	3	S0042	DC61-02152C	BASKET-WRAPPER; CT PJT/8 KG,STAINLESS-ST5	SNA	1
27-2	4	R0009	DC60-00045A	FLANGE-SHAFT; POSEIDON-PJT(8kg),ALDC12	SNA	1
27-3	3	S0058	DC97-16563A	ASSY BALANCER; GAIA-PJT,BEST 10KG,PP/KTL-	SA	1
27-3-1	4	S0038	DC63-01272A	BALANCER-LOWER; GAIA 8~10kg,PP,T4.0,KTL G	SNA	1
27-3-2	4	S0039	DC63-01273A	BALANCER-UPPER; GAIA 8~10kg,PP,T 4.0,KTL	SNA	1
27-4	3	S0021	DC97-16594A	ASSY GUIDE W.F; GAIA-PJT,BETTER 8KG/FILTE	SA	1
27-5	3	S0021	DC97-16595A	ASSY GUIDE W.F; GAIA-PJT,BETTER 8KG/FALL,	SA	1
27-5-1	4	S0048	DC61-02942A	GUIDE-W.F; GAIA 8kg,PP,T2.0,W140,GLAY	SA	1
28	2	U0151	DC97-16816A	ASSY PULSATOR; PACIFIC,WOBBLE 10KG,398.6*	SA	1

No.	Lvl.	Loc.	Material Code	Description & Specification	SNA	Qty.
28-1	3	U0117	DC66-00024A	BUSH-PULSATOR; STAINLESS-ST304,SERRATION	SNA	1
28-2	3	U0224	DC66-00698A	PULSATOR; PACIFIC-WOBBLE,PP,L/Savoy Blue,	SA	1
28-3	3	Z1127	DC63-01399A	COVER-PULSATOR; PACIFIC-WOBBLE,PP,T2.5,W7	SA	2
28-4	3	B0018	DC97-16819A	ASSY ROLLER; PACIFIC,WOBBLE 10KG,T2.5,50*	SNA	2
28-4-1	4		DC61-03221A	BODY-ROLLER; PACIFIC-WOBBLE,POM,T2.5,L117	SA	2
28-4-2	4		DC67-00613A	CAP-ROLLER; PACIFIC-WOBBLE,POM,T2.5,W45.5	SA	2
29	2	U0354	DC60-00006A	WASHER-WAVE; STAINLESS-ST301,ID24.7,OD40	SA	1

1.3. Assy Frame & Base

Exploded View



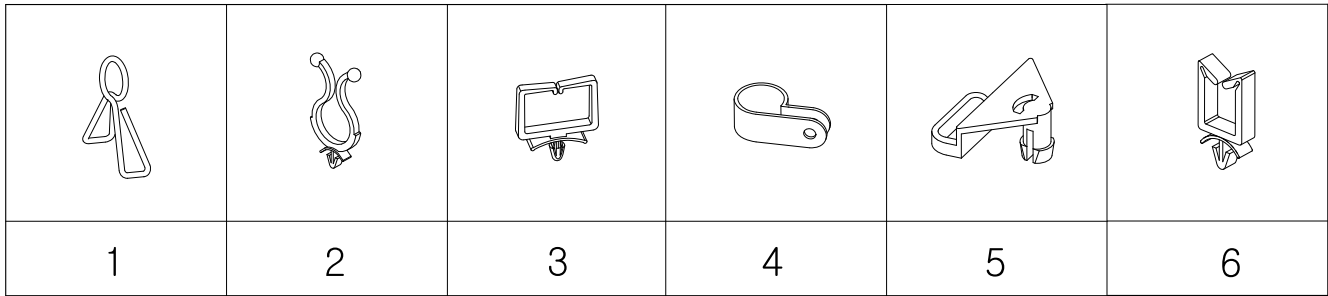
Parts List

No.	Lvl.	Loc.	Material Code	Description & Specification	SNA	Qty.
1	1	F0028	DC97-12769K	ASSY FRAME; POSEIDON 8-10 KG,PUMP,-,-,-,D	SA	1
3	2	A0282	DC61-10571A	COVER-BACK; GI-SGCC,T0.4,SEW-E851	SC	1
4	3	I0043	DC62-10292A	HOSE-DRAIN; AUTOMATIC,EPDM,ID 19.5(CASE P	SC	1
5	2	A0086	DC64-01082D	HANDLE; POSEIDON2-PJT,PP,-,-,-,DA-WHITE	SA	2
6	1	B0012	DC90-06206B	ASSY BASE; PSD 8~10 KG/LOW BASE,PUMP/PP-C	SA	1
6-1	2	B0072	DC61-03190B	BASE; PSD 8~10 KG,PP,W598,L635.2,BLACK,LO	SNA	1
6-2	2	B0073	DC61-50015B	LEG-RUBBER; SW70A1,BUTYL,BLK/HRS70	SNA	2
6-3	2	Z0062	6002-001306	SCREW-TAPPING; TH,+,1,M4,L14,ZPC(WHT),SWR	SA	4
6-4	2	B0070	DC97-12754A	ASSY LEG; POSEIDON-PJT(8KG),BLK/PP-COPO	SNA	2

No.	Lvl.	Loc.	Material Code	Description & Specification	SNA	Qty.
6-4-1	3	Z0062	6002-001306	SCREW-TAPPING; TH,+,1,M4,L14,ZPC(WHT),SWR	SA	3
6-4-2	3	Z1129	DC61-01721A	LEG-ADJUST; POSEIDON-PJT,PP,NTR,PP-COPO	SNA	2
7	2	J0013	DC96-01550A	ASSY PUMP DRAIN; AUTO 8 KG,270/BLK/A TYPE	SA	1
7-1	3	J0025	DC31-00030A	PUMP-DRAIN; B20-6,220V,50Hz,85*77*96.7,30	SA	1
8	2	I0040	DC97-16921A	ASSY HOSE WATER; HEBA,WF8804,REFLEX,L1450	SA	1
9	2	I0040	DC97-16921B	ASSY HOSE WATER; HEBA,WF8804,REFLEX,L1450	SA	1

1.4. Small Parts

Exploded View



Parts List

No.	Lvl.	Loc.	Material Code	Description & Specification	SNA	Qty.
1	2	S0055	DC61-70029A	SPRING-CLIP; HSWR-SWRH,ID7.5,D1.2,ZPC3 /	SA	1
2	2	A0125	6046-000311	STAND OFF; ID15,L5,NTR,NYLON66,DAWH-5NB	SNA	2
3	2	M0047	DC61-60074A	HOLDER-WIRE; PA,NTR,NYLON#66(DAWS-6NB)	SA	2
4	2	U0363	DC65-20008C	CABLE CLAMP; DA-8N,ID13.2/T1.0,NYLON#66,N	SNA	1
5	2	U0132	DC63-00579A	COVER-WIRE; SEW-4G105A,PP,NTR,RECYCLE PP(SNA	1
6	2	M0048	DC61-00553B	HOLDER-WIRE SADDLE; PA,NTR,NYLON66,DAWS-3	SA	1