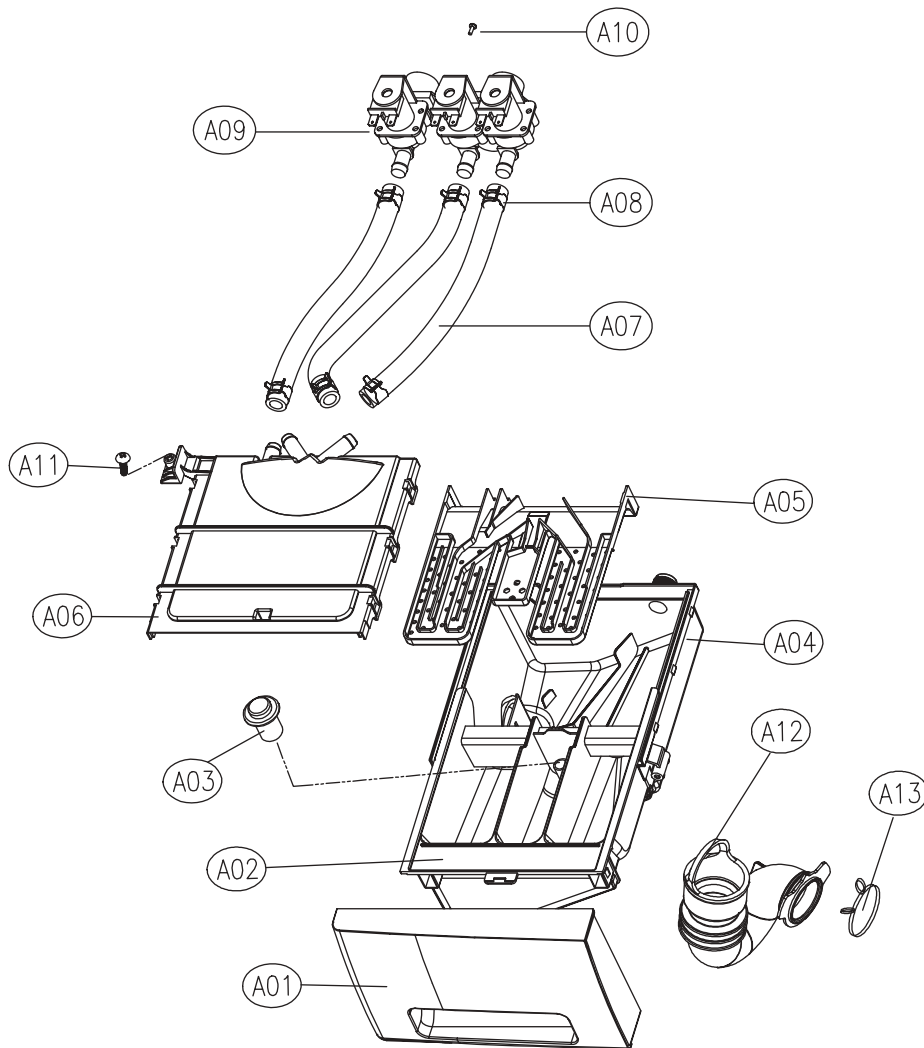


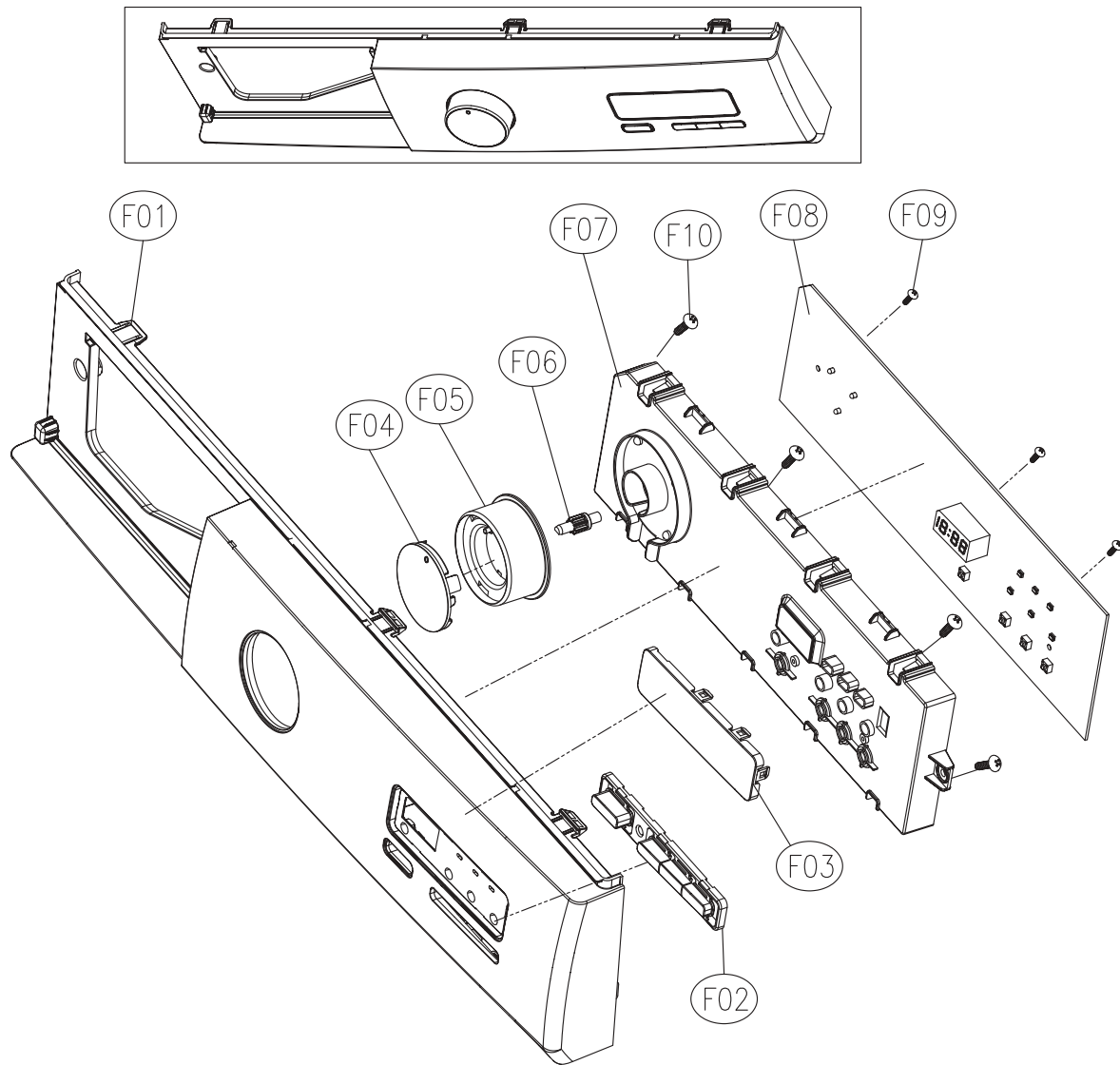
## 5. EXPLODE VIEW AND PARTS LIST

### ■ BOX INLET AS



No.	PART NAME	PART CODE	SPECIFICATION	Q'TY	REMARK
A01	CASE HANDLE	36111T2W00	HIPS, FT1081	1	
		-	ABS + SPRAY, FT1081	1	
A02	CASE DETERGENT	3611145800	PP	1	
A03	CAP SOFTENER	3610907800	PP	1	
A04	INLET BOX	3617511800	PP, D-FU1081	1	
A05	NOZZLE UNDER	3618103410	PP	1	M'S
A06	NOZZLE TOP	3618112200	PP, Cold only	1	
		3618112210	PP, Cold + Hot	1	
A07	HOSE WATER SUPPLY	3613270900	EPDM, ID9.5, OD14.5, L=310	2(3)	COLD(+HOT)
A08	CLAMP HOSE	3611205800	100H, ID=13.8, W=10, 0.9T	4(6)	COLD(+HOT)
A09	VALVE INLET	3615414900	220~240V, 2-WAY, PP/BRACKET	1	COLD
		3615416821	220~240V, VDE, 2-WAY+DR TECH INSPECTION COST		COLD(EU)
		3615414800	220~240V, 1-WAY, HOT PP/BRACKET	1	HOT(OPTION)
A10	SCREW TAPTITE	7272400811	TT3, TRS 4X8 MFZN	2(4)	COLD(+HOT)
A11	SCREW TAPPING	7122401411	T2S, TRS, 4X14 MFZN	1	
A12	HOSE INLET	3613276600	EPDM, FT1081	1	
A13	CLAMP HOSE	3611201401	HSW3, YW, D2.6, ID36, W44.5	1	

## ■ PANEL FRONT AS

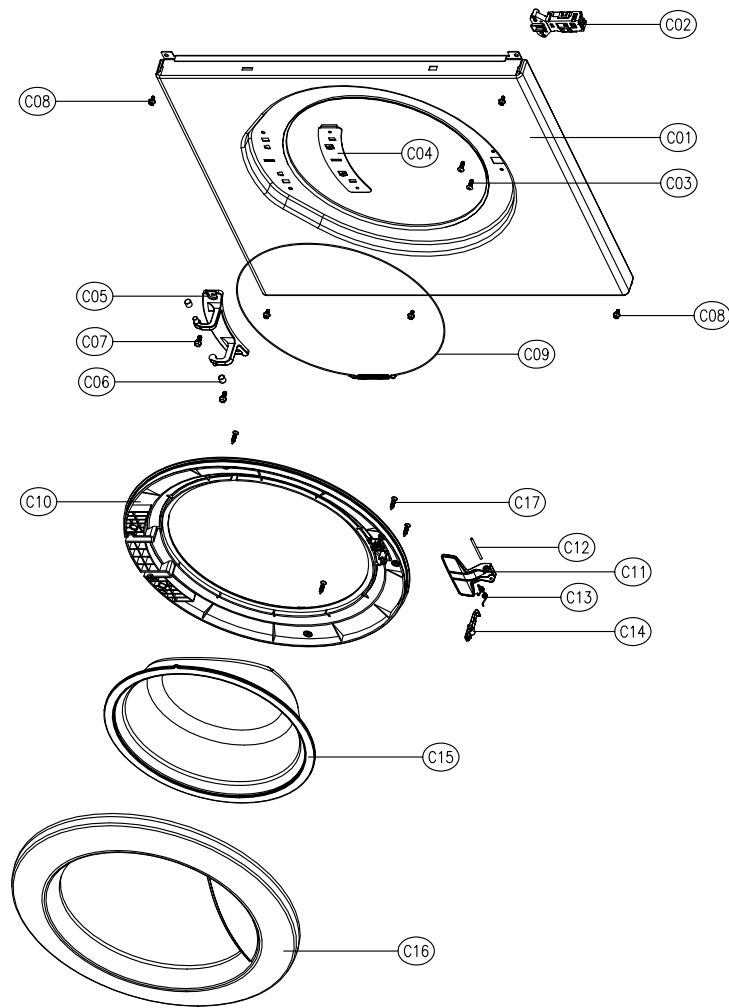


No.	PART NAME	PART CODE	SPECIFICATION	Q'TY	REMARK
F01	PANEL F	36142T3A00	HIPS, FT1081	1	
F02	BUTTON P.S	3616647600	ABS, FT1081	1	
F03	WINDOW DISPLAY	3615511700	ABS(TR), FT1081	1	
F04	DECO DIAL	36166DGQ00	ABS, FT1081	1	
F05	KNOB DIAL	3616647700	ABS, FT1081	1	
F06	SHAFT KNOB	3614905700	POM, MU802'S	1	
F07	CASE PCB F	36111T2X00	HIPS, FT1081	1	
F08	PCB DEFAULT AS	PRPSSWB---	DWD-F1XXX SERIES	1	Refer to Detailed Part Code of PCB AS
F09	SCREW TAPPING	7122300811	T2S TRS 3X8	3	
F10	SCREW TAPPING	7122401411	T2S TRS 4X14	4	

## ■ Detailed Part Code of PCB AS

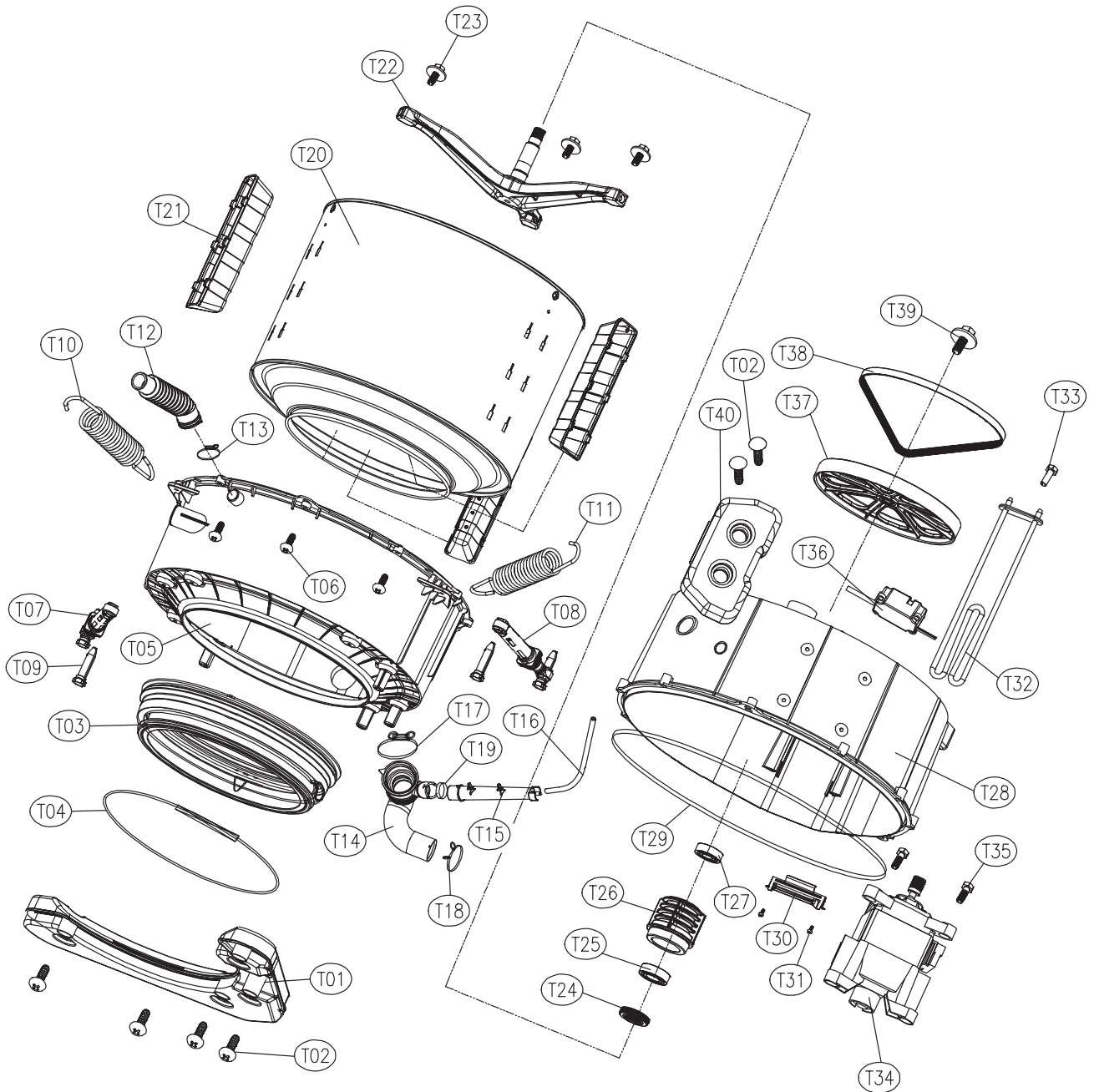
No.	PART NAME	PART CODE	SPECIFICATION	Q'TY	REMARK
F08	PCB DEFAULT AS	PRPSSWB700	D-FU1081 MAIN PCB AS, VE+NON-VDE, BB, HOT+COLD	1	8th PANEL DWD-FT1X8X SERIES
		PRPSSWB701	D-FU1081 MAIN PCB AS, VE+NON-VDE, NON-BB, COLD		
		PRPSSWB702	D-FU1081 MAIN PCB AS, VE+NON-VDE, BB, COLD		
		PRPSSWB703	D-FU1081 MAIN PCB AS, VE+NON-VDE, NON-BB, HOT+COLD		
		PRPSSWB705	D-FU1081 MAIN PCB AS, VE+VDE, BB, HOT+COLD		
		PRPSSWB706	D-FU1081 MAIN PCB AS, VE+VDE, NON-BB, COLD		
		PRPSSWB707	D-FU1081 MAIN PCB AS, VE+VDE, BB, COLD		
		PRPSSWB708	D-FU1081 MAIN PCB AS, VE+VDE, NON-BB, HOT+COLD		

## ■ CABINET FRONT AS



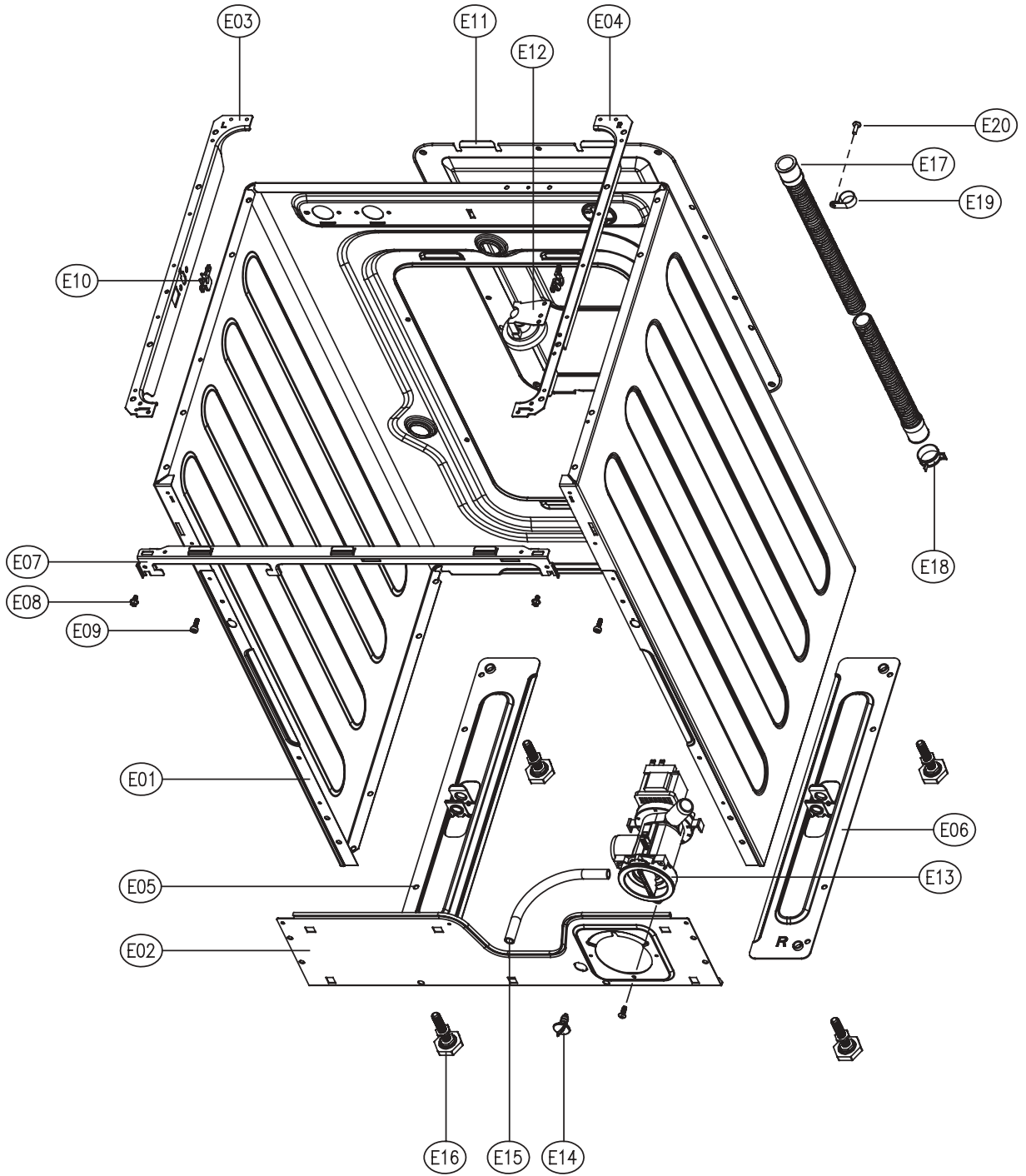
No.	PART NAME	PART CODE	SPECIFICATION	Q'TY	REMARK
C01	CABINET FRONT	3610811210	PCM, SGCC 0.8T, SILVER	1	DWD-F1XX3
		3610811220	SECD 0.7T		DWD-F1XX1(2)
C02	SWITCH DOOR LOCK	3619047100	DL-LC.BITRON_3P.250V16A.BI-METAL	1	
C03	SCREW TAPPING	7122401208	T2S TRS 4X12 SUS	2	
C04	PLATE HINGE SUPPORT	3614531900	SGCC T1.6	0	No use
C05	HINGE DOOR	3612902800	ALDC	1	
C06	CAP HINGE DOOR	3610916500	POM	2	
C07	SCREW TAPPING	3616030000	F/L BOLT(SE) 5*12 SUS	2	
C08	SCREW TAPPING	3616029950	TTS"S" HEX F/L 4*8	6	
C09	CLAMP DOOR AS	3611204810	HSW3, D=1.4 GS	1	
C10	FRAME DOOR I	3612205200	PP	1	
C11	HANDLE DOOR	3612608600	ABS	1	
C12	PIN HANDLE	3618200200	SUS304, D3, L48	1	
C13	SPRING HOOK	3615114600	SUS D1.4	1	
C14	HOOK DOOR	3613100700	ZNDC	1	
C15	DOOR GLASS	361A110700	GLASS PI300	1	
C16	FRAME DOOR O	3612205102	HIPS D-F'S	1	DWD-F1XX1
		3612205120	CR3		DWD-F1XX2(3)
C17	SCREW TAPPING	7115402008	T1S FLT 4*20 SUS	6	

■ TUB ASS'Y



No.	PART NAME	PART CODE	SPECIFICATION	Q'TY	REMARK
T01	BALANCER WEIGHT F AS	3616111800	D-FT1081's, 8kg	1	
T02	SPECIAL SCREW	3616029400	SWCH 8.5X30	6	
T03	GASKET	3612327300	EPDM, D-FT1081	1	
T04	CLAMP GASKET AS	3611204520	HSW3, GS	1	
T05	TUB *F	3618831000	FRPP, FT1081	1	
T06	SPECIAL SCREW	3616062700	SWRCH 18A 5.6X30	12	
T07	DAMPER FRICTION	361A700140	70N CIMA ST=170-260 DL=202	1	
T08	DAMPER FRICTION	361A700140	70N CIMA ST=170-260 DL=202	1	
T09	DAMPER PIN	361A700200	AKS D=14.5	2	
T10	SPRING SUSPENSION *L	3615118700	FU1081,D=3.2 L=173,K=0.664 YELLOW COATING	1	
T11	SPRING SUSPENSION *R	3615118750	FU1081,D=3.2 L=167,K=0.455 SILVER COATING	1	
T12	HOSE VENT	3613267100	EPDM	1	
T13	CLAMP HOSE	3611204700	D26	1	
T14	HOSE DRAIN	3613267300	EPDM	1	
T15	AIR TRAP	361A500101	PP	1	
T16	HOSE AIR	3613268600	ID=4,OD=8, L=580	1	
T17	CLAMP AS	3611203210	ID=61, WIRE+GUIDE+BOLT, GS	1	
T18	CLAMP HOSE	3611201401	HSW3,YW,D2.6,ID36,W44.5	1	
T19	CLAMP HOSE	3611204700	D26	1	
T20	DRUM SUB AS	3617004002	D-F 0.4T(CENTER, REAR), 0.5(FRONT)	1	
T21	LIFTER WASH	361A400410	PP D-F'S NANO	3	
T22	SPIDER AS	361A301500	D-FT1081	1	
T23	SPECIAL SCREW	3616029500	SUS430 8*25	3	
T24	WATER SEAL	361A600100	NBR	1	1 piece SVC part
T25	BEARING INNER	3616303100	F,L,E,U,6206Z	1	
T26	BEARING HOUSING	3616305600	ALDC, FT1081	1	
T27	BEARING OUTER	3616303200	F,L,E,U,6205Z	1	
T28	TUB REAR	3618831100	FRPP, FT1081	1	
T29	SEALING TUB	3612321601	EPDM L1600(-0~ +10)	1	
T30	FIXTURE HEATER	3612007300	SUS 0.7T 440X45	1	
T31	SCREW TAPPING	7122401408	T2S TRS 4*14 SUS,STS	2	
T32	HEATER WASH	3612803600	230V 2000W.1R5A721001.IRCA FUSE 2EA	1	CE, CB Standard
		3612803700	230V 2000W.1R5A721002.IRCA FUSE 2EA	1	
		3612803800	240V 2000W.1R5A721003.IRCA FUSE 2EA	1	
		3612802400	220V 2KW.1R0A721001.RW8TF.IRCA	1	
		3612802420	240V 2KW.1R0A721003.RW8TF.IRCA	1	
T33	THERMISTOR WASH	361AAAAB10	R25=1.704_ R80=11.981_	1	
T34	UNIT MOTOR UNIVERSAL	36189L4H30	DC220V 50HZ 2P PI340 45T DUM-66 TONLON	1	
		36189L4H10	AC220~240/50 G&J GJ-2UA005A 2P PI340 45T(CCA)	1	option
		36189L4H20	DC220/50 C&M 2P PI340 45T(AL)	1	option
T35	SPECIAL SCREW	3616007400	T2S TRS 4X10+24	2	
T36	UNIT BUBBLE PUMP AS	36189L4120	220-240V DBK-240DB RP CHSHION	1	
T37	PULLEY	3618433200	ALDC, D-FU		
T38	BELT V	3616591110	GATES 4PJ1120 BUTADIENE RUBBER	1	
T39	SPECIAL BOLT AS	3616029600	SWCH 10*30,F/L BOLT S.P/W SEAL LOCK	1	
T40	BALANCER WEIGHT *T AS	3616110700	PP, D-LU1011, 2.48KG	1	

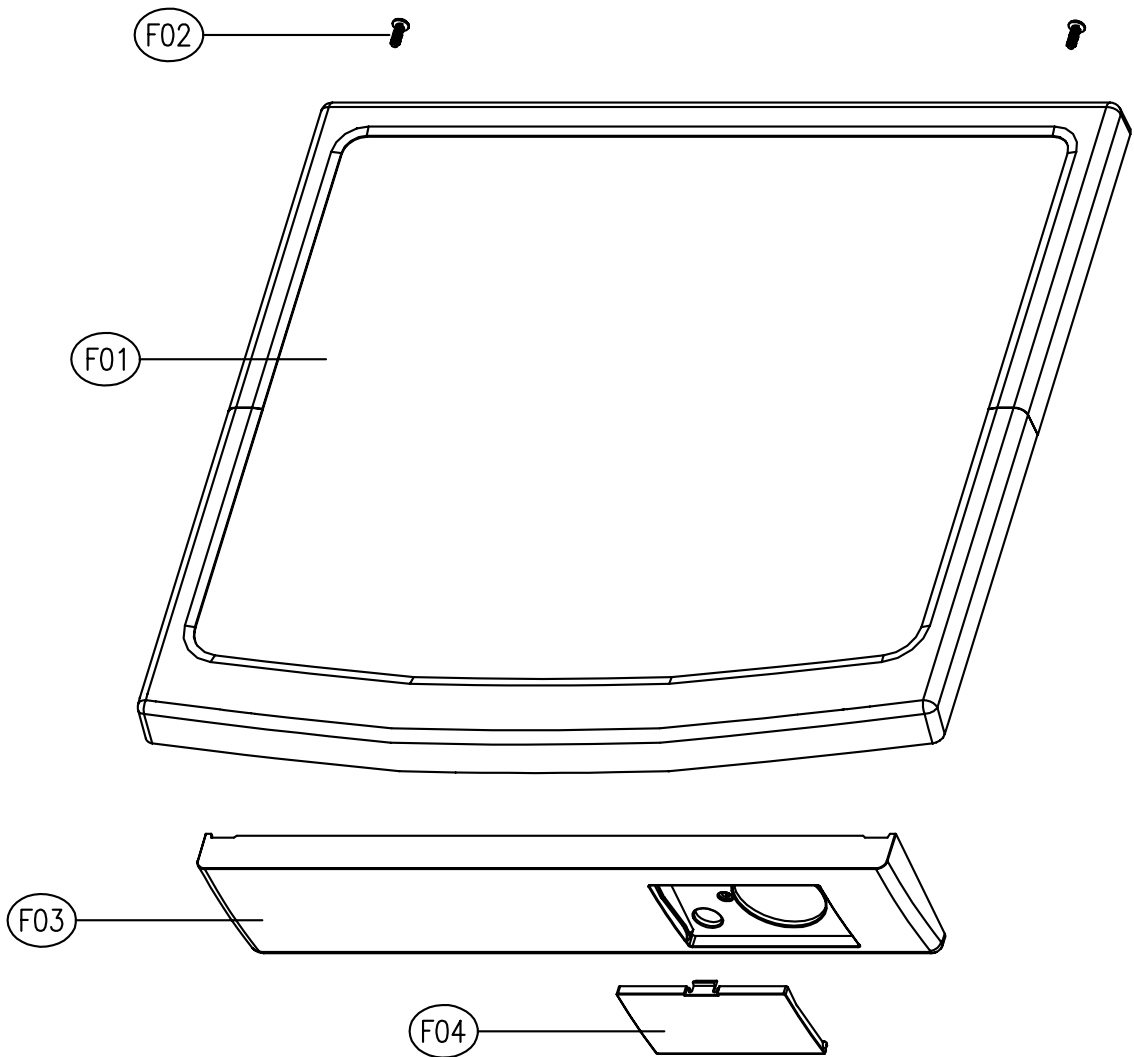
# ■ CABINET AS



No.	PART NAME	PART CODE	SPECIFICATION	Q'TY	REMARK
E01	CABINET	3610811101	SGCC(GI), 0.7TX825.7X1630.8	1	1 piece SVC part
E02	FRAME LOWER	3612205501	SGCC T1.0 160X580	1	
E03	FRAME TOP *L	36122UDY00	SGCC T=1.2, FT1081	1	
E04	FRAME TOP *R	36122UDZ00	SGCC T=1.2, FT1081	1	
E05	BASE UNDER *L	3610392201	SGCC T1.4 100x500	1	
E06	BASE UNDER *R	3610392301	SGCC T1.4 100x500	1	
E07	FRAME UPPER	36122UE000	SGCC 1.0T, FT1081	1	
E08	SCREW TAPPING	3616029950	TTS"S" HEX F/L 4X8	4	
E09	SPECIAL BOLT	3616029100	M4x12.5, MACHINE	2	
E10	STOPPER SPRING	3615202200	POM	2	
E11	COVER BACK AS	3611425520	COVER BACK+CUSHION	1	
E12	SENSOR PRESSURE	3614825330	DL-DW11-H AIR INLET 90 HOOK TYPE	1	
E13	UNIT DRAIN PUMP AS	36189L5K20	AL.220-240/50 B20-6 30W 6KG	1	220-240V 50Hz
		36189L5J20	AL.220/60 B20-5 35W 6KG	1	220V 60Hz
E14	CAP WATER REMAIN	3610916800	PP	1	
E15	HOSE WATER REMAIN	3613268700	EPDM, ID8.5, L200	1	
E16	LEG ADJUST AS	3617703811	CHINA PARTS, DWD-900W	4	
E17	HOSE DRAIN OUTER AS	3613274920	D-F'S L1960, EXPORT GENERAL	1	
E18	CLAMP HOSE	3611204701	DI=26	1	
E19	CLAMP HOSE	3611206410	NYLON, DA-16N, ID21.9 D-MU80	1	
E20	SCREW TAPPING	7122401411	T2S TRS 4*14 MFZN	1	



■ PLATE T AS + PANEL LOWER AS



No.	PART NAME	PART CODE	SPECIFICATION	Q'TY	REMARK
F01	PLATE TOP AS	3614533300	FX1X31~2, 41~2(HIPS, MFC, WH)	1	
		3614533310	F3~F4'S, SPRAY(ABS, MFC, SILVER)	1	
F02	SCREW TAPPING	7122401411	T2S TRS 4x14 MFZN	2	
F03	PANEL LOWER	3614282801	HIPS	1	
F04	COVER PUMP FILTER	3611425801	HIPS	1	

# 10. WIRING DIAGRAM

