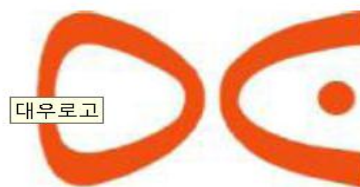
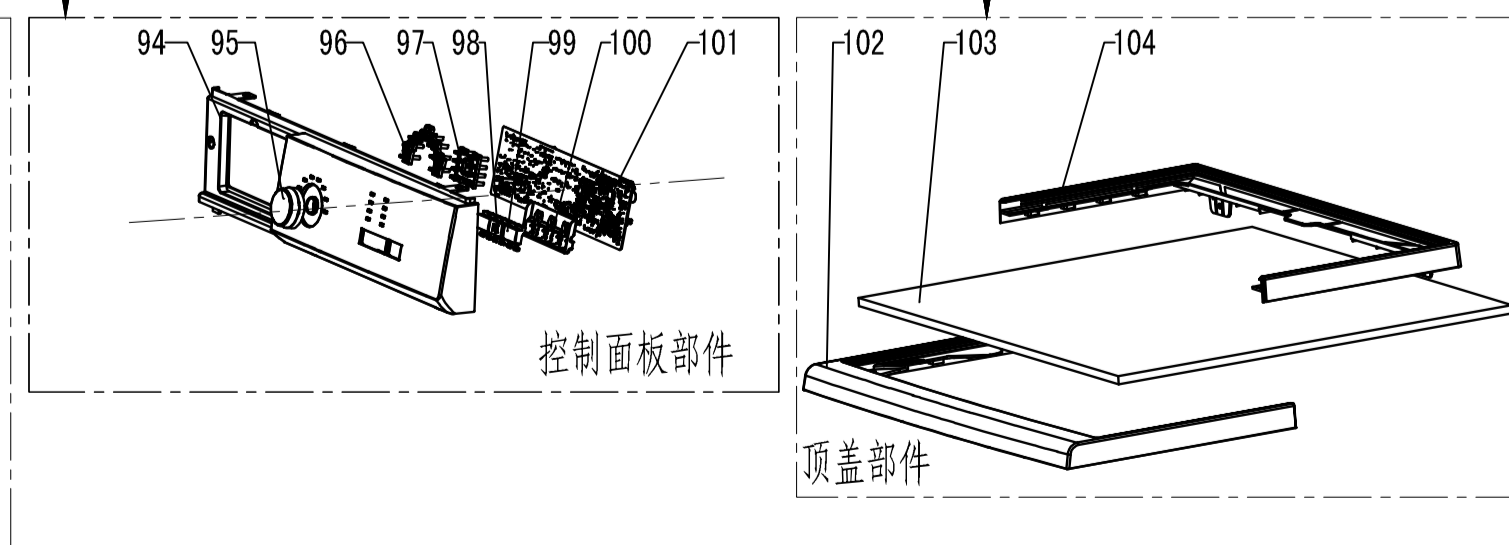
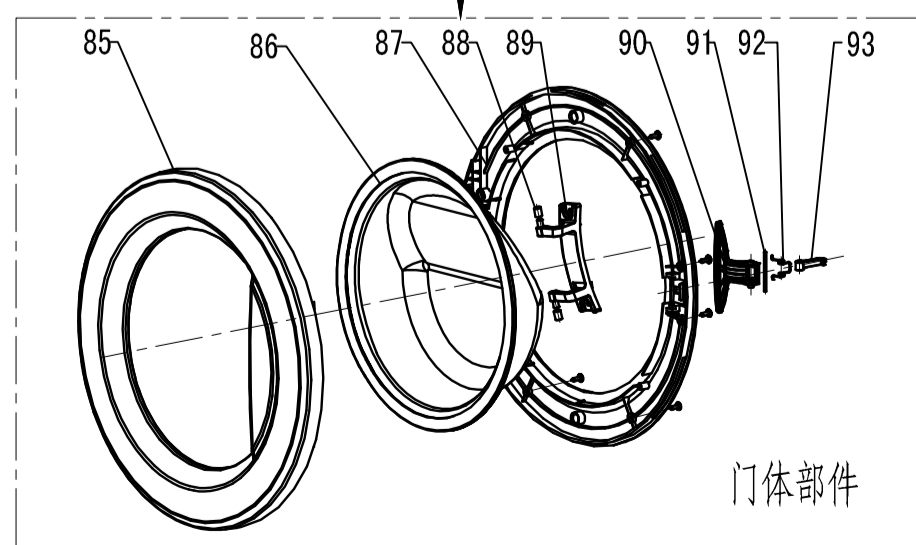
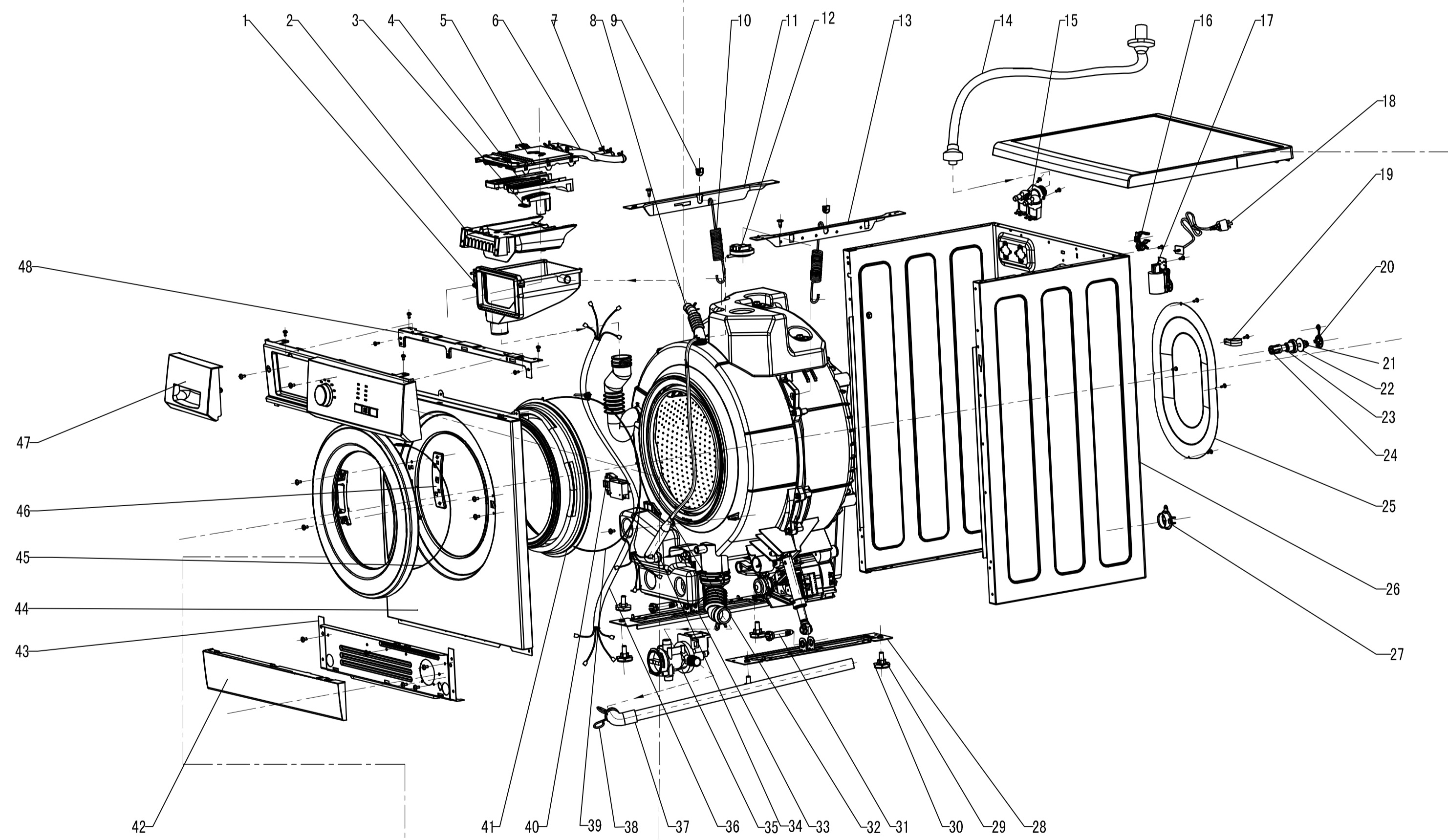
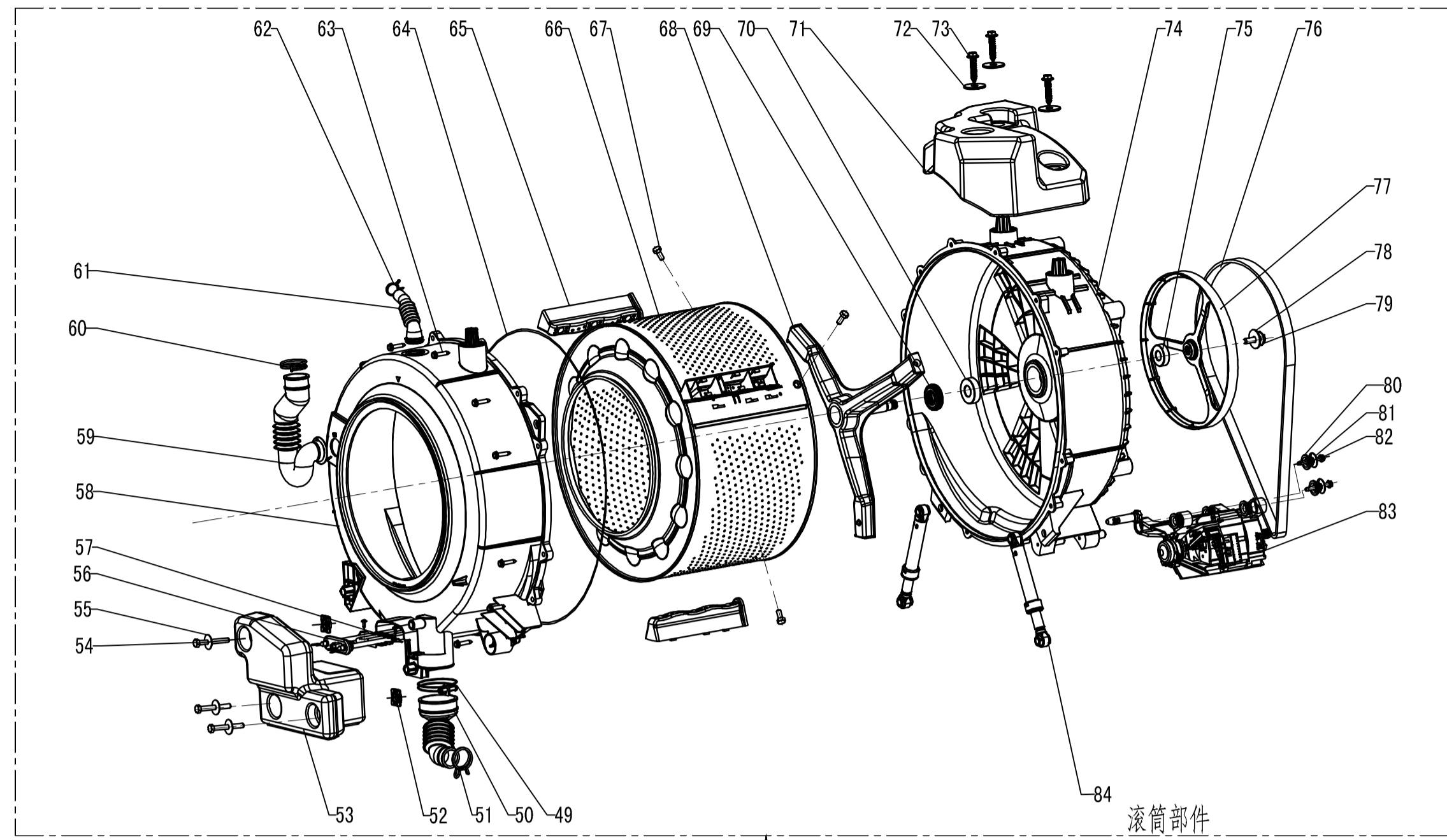


DAEWOO
ELECTRONICS



SERVICE MANUAL

MODEL: DWD-MG1011



112					56	XA7QG60.8-2(263)	heater	1	AS
111					55	GB/T96.2-2002	washer	3	Q235-A
110					54	XLD02-05	lower balancer bolt	3	Q235-A
109					53	XA2QG60.7-8(167)	lower balancer	1	Coocrete+Iron sand
108					52	XA1QG72D.7.2-3	Fixer	3	SGCC
107					51	XRJ01-03	hose clamp 36	1	65Mn
106					50	XA2QG60.7-4(167)	drain tube	1	DPDM
105					49	XRJ01-09	hose clamp 70	1	65Mn
104	XA2QG60.2-2(167)	rear frame	1	ABS	48	XA2QG70E.1-1(044)	upper frame	1	SGCC
103	XA2QG60.2-1(167)	top board	1	LIBER BOARD	47	XA1QG72DR.6.1-3	drawer	1	ABS
102	XA2QG60.2-3(167)	front frame	1	ABS	46	XA2QG60.5-2(167)	hinge support plate	1	SGCC
101	XA7QG60.3-8(287)	pcb	1	ABS	45	XA1QG72D.7-10	Outer door seal clamp	1	65Mn
100	XA7QG60.3-7(263)	button support	1	POM	44	XA2QG60.5-1(167)	front panel	1	SPCD
99	XA7QG60.3-5(263)	button 1	2	ABS	43	XA2QG60.1.1-6(167)	lower frame	1	SPCD
98	XA7QG60.3-6(263)	button 2	1	ABS	42	XA7QG60.4-1(263)	lower panel	1	ABS
97	XA7QG60.3-3(263)	light guide1	1	PC	41	XA2QG60.7-7(167)	door seal	1	EPDM
96	XA7QG60.3-4(263)	light guide2	1	PC	40	XA1QG72D.9-5	door lock	1	AS
95	XA7QG60.3-2(263)	knob	1	ABS	39	XA1QG72D.7-11	Inner door seal clamp	1	65Mn
94	XA7QG60.3-1(263)	control panel	1	ABS	38	XRJ01-07	hose clamp27	1	65Mn
93	XA1QG72D.5-7	door hook	1	Zinc base alloy	37	XA1QG72D.9.2-4	drain hose	1	EPDM
92	XA1QG72D.5-9	door handle spring	1	SUS304	36	XA7QG60.8-1(263)	wiring harness	1	AS
91	XA1QG72D.5-10	door handle pin	1	45#	35	XA1QG72E.9.2-1	drain pump	1	AS
90	XA1QG72D.5-8	door handle	1	PP	34	XRJ01-15	hose clamp 20	1	65Mn
89	XA2QG60.5-3(167)	door hinge	1	Zinc base alloy	33	XA2QG60.1.1-4(167)	cabinet left bottom frame	1	SPCD
88	XA1QG72D.5-2	hinge cap	2	POM	32	XA2QG60.7-5(167)	air chamber	1	EPDM
87	XA1QG72D.5-3	door frame	1	PP	31	XA2QG60.7-13(167)	absorber pin	4	PA66
86	XA1QG72D.5-5	door glass	1	GALSS	30	XXJ01-01	adjustable feet	4	Q235-A
85	XA7QG60.5-1(263)	door decorated ring	1	ABS	29	GB/T6170-2000	M10 nut	4	Q235-A
84	XA2QG60.7-12(167)	absorber	2	AS	28	XA2QG60.1.1-5(167)	cabinet right bottom frame	1	SPCD
83	XDQ04-17	series motor	1	AS	27	XA1QG72D.1-5	drain hose frame	1	PP
82	GB/T16824.2-1997	bolt	2	POLYESTER FIBRE	26	XA2QG60.1.1-1(167)	cabinet	1	SPCD
81	XLD01-02	transportation washer 1	2	Q235-A	25	XA2QG60.1-1(167)	back cover	1	SPCD
80	X1QG60.7.3-6	rubber ring 1	5	DPDM	24	XA2QG60.9-5(167)	transportation plastic pillar	4	
79	GB/T 5789-1986	bolt M10	1	Q235-A	23	XA2QG60.9-6(167)	transportation rubber ring	4	DPDM
78	GB/T5287 10	washer	1	Q235-A	22	XLD01-03	transportation washer 2	4	Q235-A
77	XA2QG60.7-6(168)	Fulley	1	AL(ADC12)	21	XLD02-08	transportation bolt	4	Q235-A
76	XA1QG72D.7-2	belt	1	POLYESTER FIBRE	20	XA2QG60.9-7(167)	hole cap	4	PP
75	6205-2RZ/C3	BALL BEARING 6205	1		19	XSL07-01	hose clamp 24	1	PP
74	XA2QG60.7.3.1(168)	BACK TUB ASSEMBLY	1	AS	18	XDQ05-51	power cord	1	AS
73	XLD03-11	BOLT	3	Q235-A	17	XA2QG60.8-2(168)	filter	1	AS
72	XLD01-09	balancer washer	3	Q235-A	16	XA1QG72D.12-7	PLASTIC HOSE CLAMP	1	PP
71	XA2QG60.7-1(167)	upper balancer	1	Coocrete+Iron sand	15	XDQ02-01	inlet valve	1	AS
70	6206-2RZ/C3	BALL BEARING 6206	1		14	XSL03-05	INLET HOSE	1	AS
69	XA2QG60.7.3-1(168)	shaft seal	1	AS	13	XA2QG60.1.1-3(167)	cabinet right top frame	1	SPCD
68	XA2QG60.7.1.2(168)	drum spider	1	AL(ADC12)	12	XDQ10-05	pressure sensor	1	AS
67	XLD03-10	BOLT	3	SUS304	11	XA2QG60.1.1-2(167)	cabinet left top frame	1	SPCD
66	XA2QG60.7.1.1(167)	INNER DRUM ASSM	1	AS	10	XA2QG60.1-2(167)	suspension spring	2	65Mn
65	XA2QG60.7.1-1(167)	lifter	3	PP	9	X1QG60.1-8	suspension spring stopper	2	POM
64	XA2QG60.7-14(167)	tub seal	1	DPDM	8	XRJ01-08	hose clamp 7	1	65Mn
63	GB/T16824.2-1997	bolt	12	POLYESTER FIBRE	7	XRJ01-14	hose clamp 15	4	65Mn
62	XRJ01-15	hose clamp 20	1	65Mn	6	XA2QG60.6-1(167)	hose	2	DPDM
61	XA2QG60.7-2(167)	exhaust hose	1	DPDM	5	XA2QG60.6.2-3(167)	distributory box cover	1	PP
60	XRJ01-16	hose clamp 43	1	65Mn	4	XA2QG60.6.2-2(167)	distributory box	1	PP
59	XA2QG60.7-3(167)	inlet tube	1	DPDM	3	XA2QG60.6.1-2(167)	siphon	1	PP
58	XA2QG60.7.2-1(168)	front tub	1	HG43	2	XA2QG60.6.1-1(167)	detergent dispenser	1	PP
57	XA1QG72D.7.2-2	heater support	1	SUS304	1	XA2QG60.6.2-1(167)	detergent dispenser housing	1	PP
No.	Code	Name	Quantity	Material	No.	Code	Name	Quantity	Material

XQG60-A710E(289)
Exploded View

Code: XA7QG60E.0(289)

Mark	Design	Check	Review
LinJinxiong	Standard	Approver	Date
			Mar-27 2012

Mark	Quantity	Weight	Scale
S	1		1:1
One Page		Page One	

Material:
Zhongshan Galanz Consumer Electric Appliances Co.,Ltd

	A7 10E spare parts list		
Part Drawing	PARTS CODE	PART NAME	Qty
1	XA2QG60. 6. 2-1(167)	detergent dispenser housing	1
2	XA2QG60. 6. 1-1(167)	detergent dispenser	1
3	XA2QG60. 6. 1-2(167)	siphon	1
4	XA2QG60. 6. 2-2(167)	distributary box	1
5	XA2QG60. 6. 2-3(167)	distributary box cover	1
6	XA2QG60. 6-1(167)	hose	1
7	XBJ01-14	hose clamp 15	1
8	XBJ01-08	hose clamp 7	1
9	X1QG60. 1-8	suspension spring stopper	1
10	XA2QG60. 1-2(167)	suspension spring	1
11	XA2QG60. 1. 1-2(167)	cabinet left top frame	1
12	XDQ10-05	pressure sensor	1
13	XA2QG60. 1. 1-3(167)	cabinet right top frame	1
14	XSL03-05	INLET HOSE	1
15	XDQ02-01	inlet valve	1
16	XA1QG72D. 12-7	PLASTIC HOSE CLAMP	1
17	XA2QG60. 8-2(168)	filter	1
18	XDQ05-51	power cord	1
19	XSL07-01	hose clamp 24	1
20	XA2QG60. 9-7(167)	hole cap	1
21	XLD02-08	transportation bolt	1
22	XLD01-03	transportation washer 2	1
23	XA2QG60. 9-6(167)	transportation rubber ring	1
24	XA2QG60. 9-5(167)	transportation plastic pillar	1
25	XA2QG60. 1-1(167)	back cover	1
26	XA2QG60. 1. 1-1(167)	cabinet	1
27	XA1QG72D. 1-5	drain hose frame	1
28	XA2QG60. 1. 1-5(167)	cabinet right bottom frame	1
29	GB/T6170-2000	M10 nut	1
30	XXJ01-01	adjustable feet	1
31	XA2QG60. 7-13(167)	absorber pin	1
32	XA2QG60. 7-5(167)	air chamber	1
33	XA2QG60. 1. 1-4(167)	cabinet left bottom frame	1
34	XBJ01-15	hose clamp 20	1
35	XA1QG72E. 9. 2-1	drain pump	1
36	XA7QG60. 8-1(263)	wiring harness	1
37	XA1QG72D. 9. 2-4	drain hose	1
38	XBJ01-07	hose clamp27	1
39	XA1QG72D. 7-11	Inner door seal clamp	1
40	XA1QG72D. 9-5	door lock	1
41	XA2QG60. 7-7(167)	door seal	1
42	XA7QG60. 4-1(263)	lower panel	1

43	XA2QG60. 1. 1-6 (167)	lower frame	1
44	XA2QG60. 5-1 (167)	front panel	1
45	XA1QG72D. 7-10	Outer door seal clamp	1
46	XA2QG60. 5-2 (167)	hinge support plate	1
47	XA1QG72DR. 6. 1-3	drawer	1
48	XA2QG70E. 1-1 (044)	upper frame	1
49	XBJ01-09	hose clamp 70	1
50	XA2QG60. 7-4 (167)	drain tube	1
51	XBJ01-03	hose clamp 36	1
52	XA1QG72D. 7. 2-3	Fixer	1
53	XA2QG60. 7-8 (167)	lower balancer	1
54	XLD02-05	lower balancer bolt	1
55	GB/T96. 2-2002	washer	1
56	XA7QG60. 8-2 (263)	heater	1
57	XA1QG72D. 7. 2-2	heater support	1
58	XA2QG60. 7. 2-1 (168)	front tub	1
59	XA2QG60. 7-3 (167)	inlet tube	1
60	XBJ01-16	hose clamp 43	1
61	XA2QG60. 7-2 (167)	exhaust hose	1
62	XBJ01-15	hose clamp 20	1
63	GB/T16824. 2-1997	bolt	1
64	XA2QG60. 7-14 (167)	tub seal	1
65	XA2QG60. 7. 1-1 (167)	lifter	1
66	XA2QG60. 7. 1. 1 (167)	INNER DRUM ASSM	1
67	XLD03-10	BOLT	1
68	XA2QG60. 7. 1. 2 (168)	drum spider	1
69	XA2QG60. 7. 3-1 (168)	shaft seal	1
70	6206-2RZ/C3	BALL BEARING 6206	1
71	XA2QG60. 7-1 (167)	upper balancer	1
72	XLD01-09	balancer washer	1
73	XLD03-11	BOLT	1
74	XA2QG60. 7. 3. 1 (168)	BACK TUB ASSEMBLY	1
75	6205-2RZ/C3	BALL BEARING 6205	1
76	XA1QG72D. 7-2	belt	1
77	XA2QG60. 7-6 (168)	Pulley	1
78	GB/T5287 10	washer	1
79	GB/T 5789-1986	bolt M10	1
80	X1QG60. 7. 3-6	rubber ring 1	1
81	XLD01-02	transportation washer 1	1
82	GB/T16824. 2-1997	bolt	1
83	XDQ04-17	series motor	1
84	XA2QG60. 7-12 (167)	absorber	1
85	XA7QG60. 5-1 (263)	door decorated ring	1
86	XA1QG72D. 5-5	door glass	1
87	XA1QG72D. 5-3	door frame	1

88	XA1QG72D. 5-2	hinge cap	1
89	XA2QG60. 5-3 (167)	door hinge	1
90	XA1QG72D. 5-8	door handle	1
91	XA1QG72D. 5-10	door handle pin	1
92	XA1QG72D. 5-9	door handle spring	1
93	XA1QG72D. 5-7	door hook	1
94	XA7QG60. 3-1 (263)	control panel	1
95	XA7QG60. 3-2 (263)	knob	1
96	XA7QG60. 3-4 (263)	light guide2	1
97	XA7QG60. 3-3 (263)	light guide1	1
98	XA7QG60. 3-6 (263)	button 2	1
99	XA7QG60. 3-5 (263)	button 1	1
100	XA7QG60. 3-7 (263)	button support	1
101	XA7QG60. 3-8 (384)	pcb	1
102	XA2QG60. 2-3 (167)	front frame	1
103	XA2QG60. 2-1 (167)	top board	1
104	XA2QG60. 2-2 (167)	rear frame	1
105			
106			
107			
108			
109			
110			
111			
112			
113			
114			