

S/M No. : WDF1011001

DESPIECE

Model: DWD-F1012S

Caution

: In this Manual, some parts can be changed for improving, their performance without notice in the parts list. So, if you need the latest parts information, please refer to PPL(Parts Price List) in Service Information Center

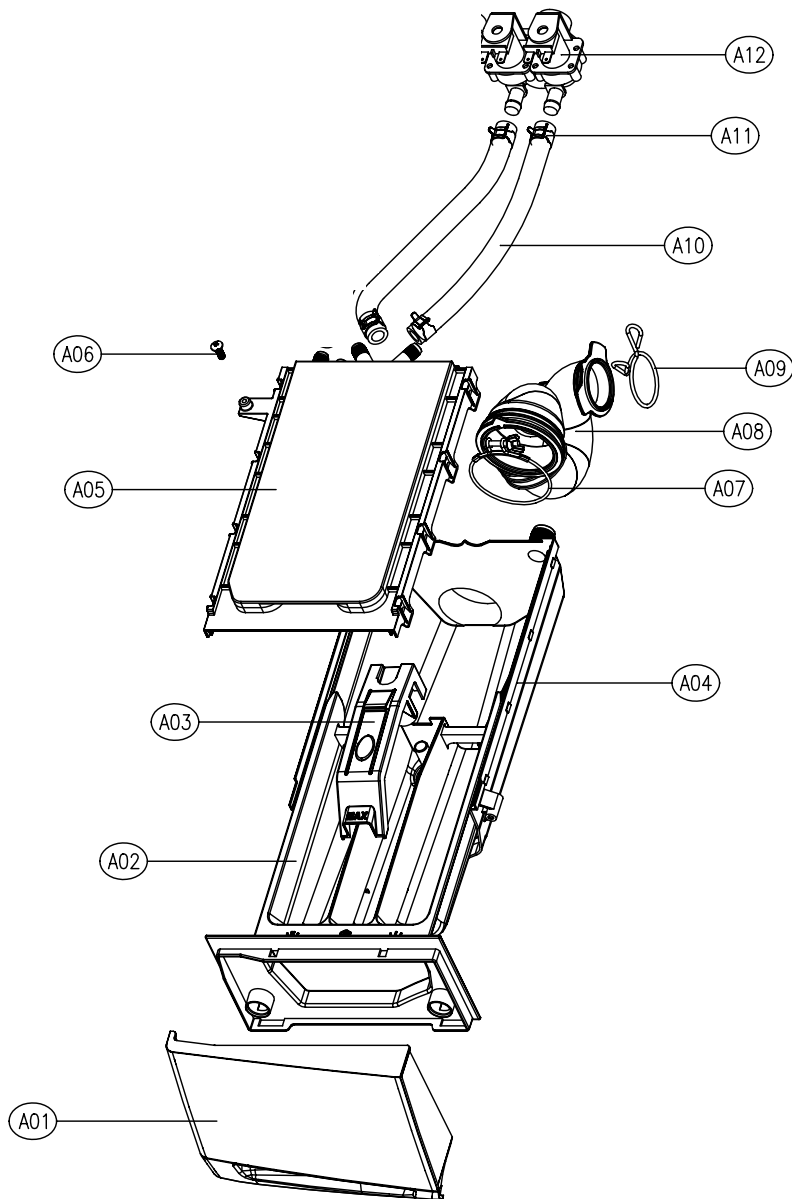
DAEWOO
ELECTRONICS

May. 2005

DAEWOO

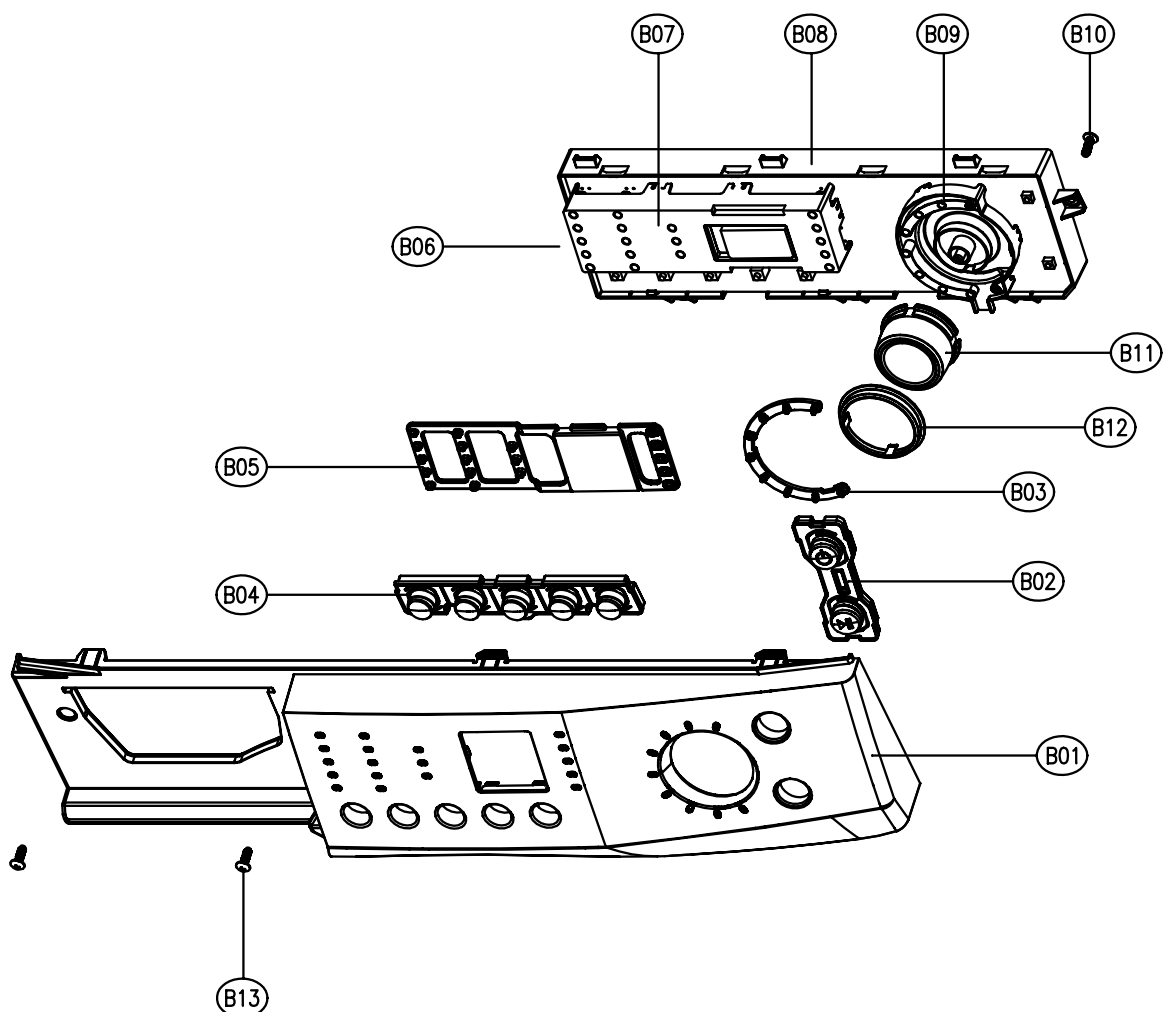
5. EXPLODE VIEW AND PARTS LIST

■ BOX INLET AS



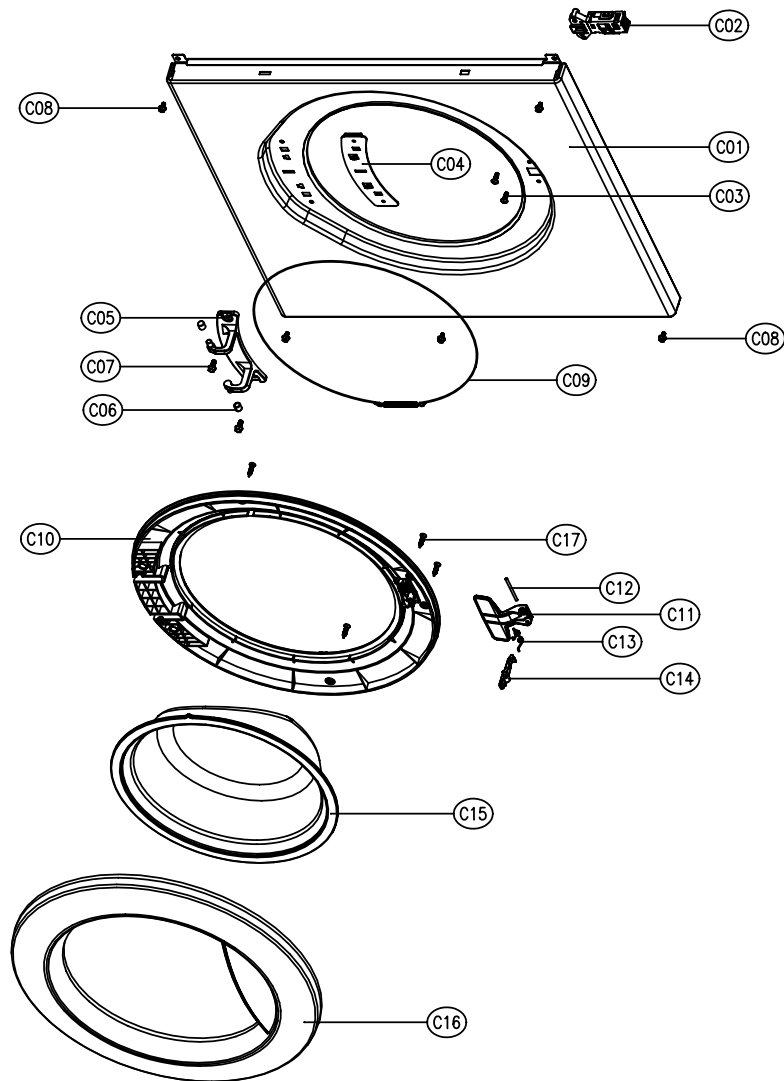
No.	PART NAME	PART CODE	SPECIFICATION	Q'TY	REMARK
A01	HANDLE CASE	PEDIR COMPLETA	ABS	1	JABONERA COMPLETA: 3611140800
A02	CASE DETERGENT	PEDIR COMPLETA	PP	1	
A03	CAP SOFTENER	PEDIR COMPLETA	PP	1	
A04	BOX INLET	3610526500	PP	1	
A05	NOZZLE AS	3618103500	NOZZLE TOP + UNDER	1	
A06	SCREW TAPPING	NO DISPON	T2S TRS 4X14 MFZN	1	
A07	CLAMP AS	3611203200	ID=60,WIRE+BOLT+NUT	1	
A08	HOSE INLET	3613267200	EPDM	1	
A09	CLAMP HOSE I	3611201400	HSW3, D2.6, MFZN, ID=38	1	
A10	HOSE INLET	3613268900	EPDM,ID=10,OD=16,L=225	2	
A11	CLAMP SPRING	3611203800	ID=15.5, T=0.6	4	
A12	VALVE INLET	3615414910	220~240V 2WAY NYLON VDE	1	COLD

■ PANEL F ASS'Y



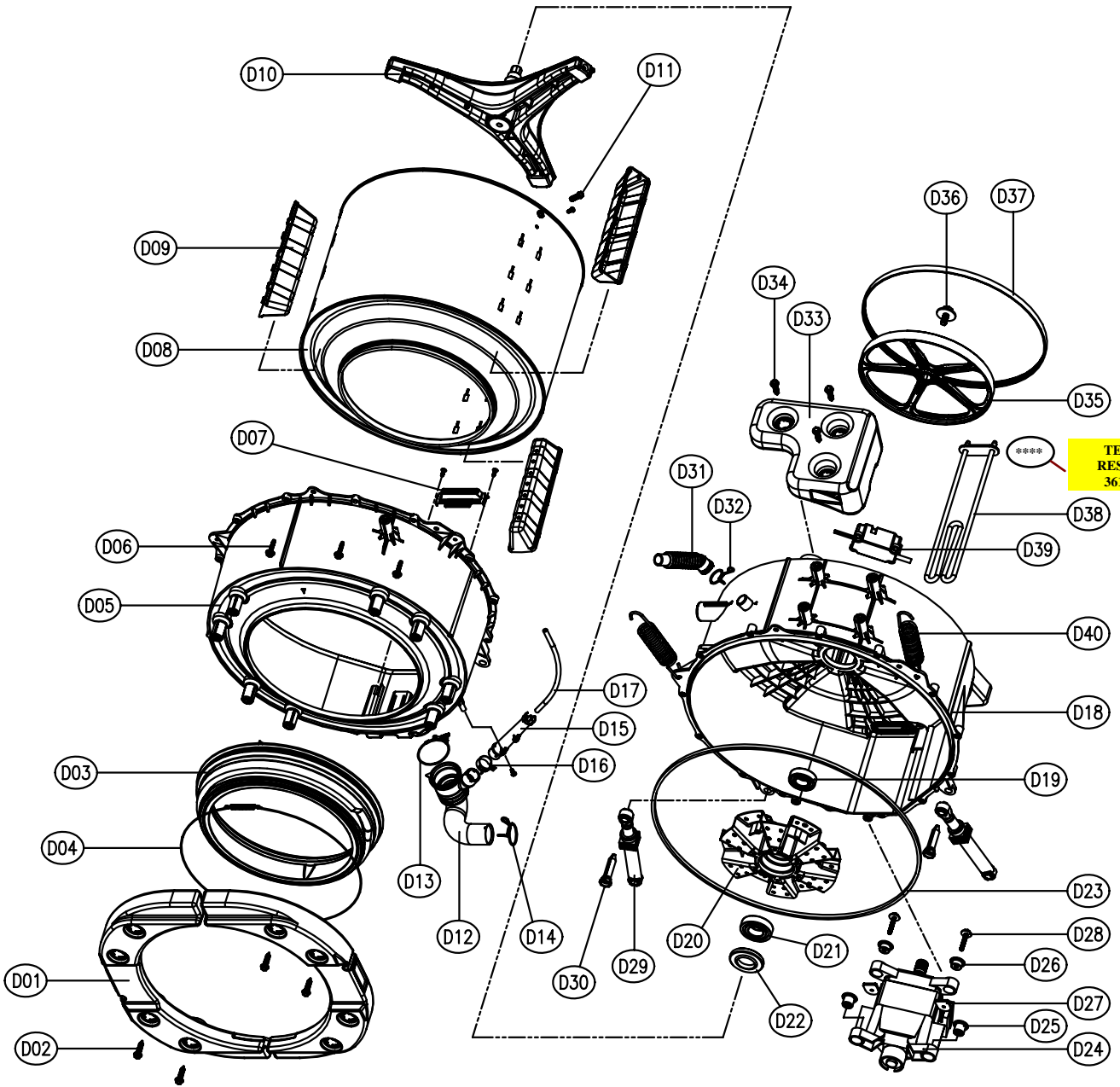
No.	PART NAME	PART CODE	SPECIFICATION	Q'TY	REMARK
B01	PANEL F	3614282700	ASB	1	
B02	BUTTON POWER	3616603601	ABS	1	
B03	WINDOW DIAL	NO DISPON	ABS-TR	1	
B04	BUTTON SELECT	3616603501	ABS	1	
B05	WINDOW LED	NO DISPON	ABS-TR	1	
B06	PCB ASS'Y	PRPSSW4D10	DWD-F1011~3N,M,L	1	COMPATIBLE: PRPSSW5D70
B07	HOLDER LED	NO DISPON	ABS	1	
B08	CASE PCB	NO DISPON	HIPS	1	
B09	HOLDER DIAL	NO DISPON	ABS	1	
B10	SCREW TAPPING	NO DISPON	T2S TRS 4X14 MFZN	4	
B11	KNOB DIAL	3613404800	ABS	1	
B12	RING KNOB	NO DISPON	ABS	1	
B13	SCREW TAPPING	NO DISPON	T2S TRS 4X16 SUS	2	

■ CABINET FRONT ASS'Y



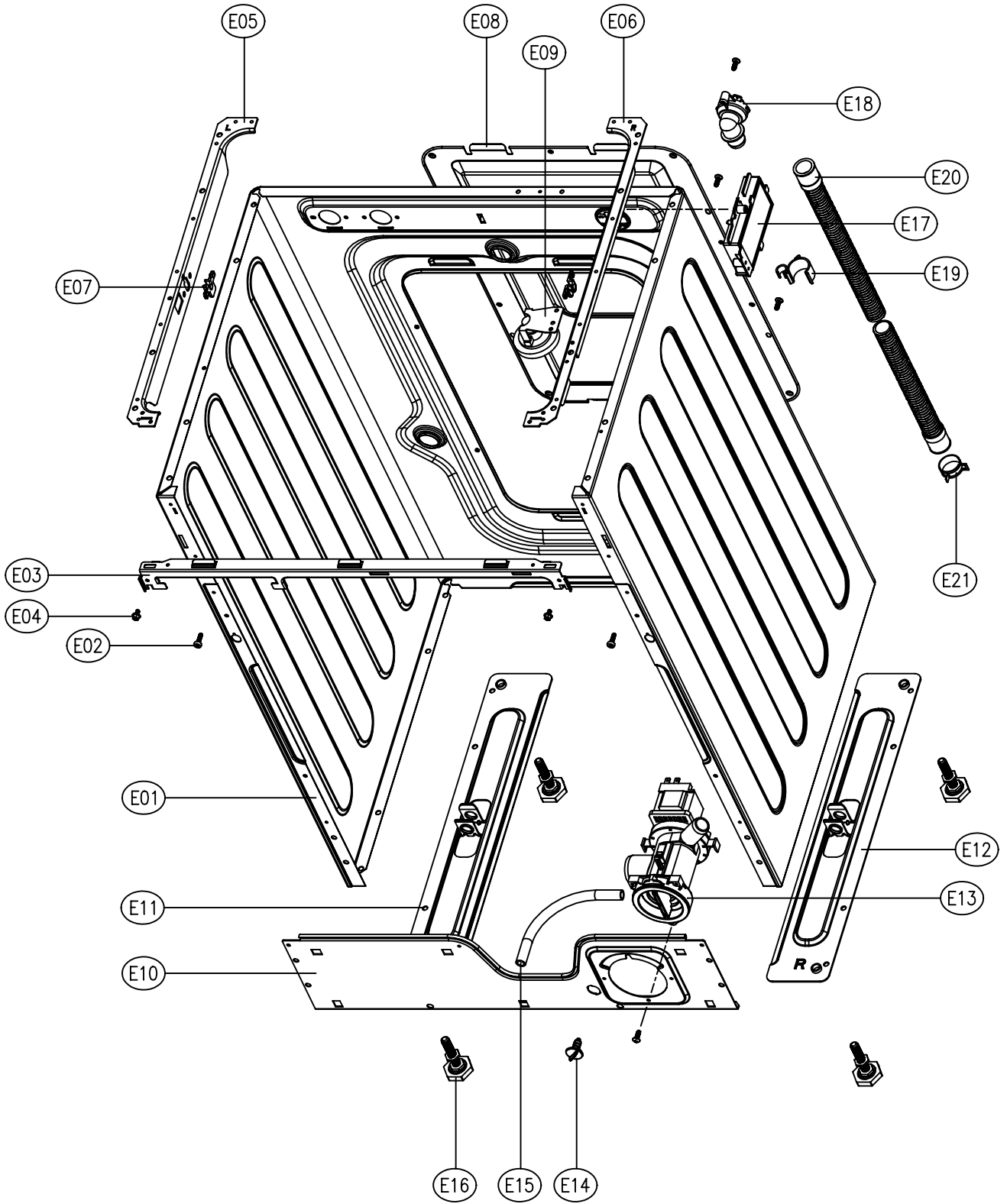
No.	PART NAME	PART CODE	SPECIFICATION	Q'TY	REMARK
C01	CABINET FRONT	NO DISPON	SECD(EGI)-2 0.8t	1	
C02	SWITCH DOOR LOCK	3619046800	BM(BI-METAL,ROLD,ITALY)	1	
C03	SCREW TAPPING	NO DISPON	T2S TRS 4X16 SUS	2	
C04	PLATE HINGE SUPPORT	3614531900	SGCC(GI) 1.6t	1	
C05	HINGE DOOR	3612902800	ZnDC, Zn COATING	1	
C06	CAP HINGE DOOR	NO DISPON	POM	2	
C07	SCREW TAPPING	NO DISPON	F/L BOLT(SE) 5X12 SUS	2	
C08	SCREW TAPPING	NO DISPON	TTS"S" HEX F/L 4X8	5	
C09	CLAMP DOOR AS	3611204800	HSW3 D=1.4 L=936	1	
C10	FRAME DOOR I	3612205200	PP,TB53	1	
C11	HANDLE DOOR	3612608600	ABS	1	
C12	PIN HANDLE	NO DISPON	SUS D3.0,L38	1	
C13	SPRING HOOK	3615114600	SUS D1.4	1	
C14	HOOK DOOR	3613100700	ZnDC, Zn COATING	1	
C15	DOOR GLASS	361A110700	GLASS	1	
C16	FRAME DOOR O	3612205110	ABS	1	
C17	SCREW TAPPING	NO DISPON	T1S FLT 4X20 SUS	6	

■ TUB ASS'Y



No.	PART NAME	PART CODE	SPECIFICATION	Q'TY	REMARK
D01	BALANCER WEIGHT AS-F	NO DISPON	FRONT, 6.0kg	2	
D02	SPECIAL SCREW	3616029400	SWCH 8.5X30	8	
D03	GASKET	3612321400	EPDM	1	
D04	CLAMP GASKET AS	3611204500	HSW3 D=1.8 L=1072	1	
D05	TUB FRONT	3618821000	FRPP	1	
D06	SPECIAL SCREW	NO DISPON	SWCH 6.5X30	14	
D07	FIXTURE HEATER	NO DISPON	SUS T0.7 45x110	1	
D08	DRUM SUS AS	3617004000	SUS T0.6	1	
D09	LIFTER WASH	361A400400	PP	3	
D10	SPIDER AS	361A300500	AL+SM45C	1	
D11	SPECIAL SCREW	NO DISPON	SUS430 8X25	3	
D12	HOSE DRAIN	3613267300	EPDM	1	
D13	CLAMP AS	3611203200	ID=60,WIRE+BOLT+NUT	1	
D14	CLAMP HOSE I	3611201400	HSW3, D2.6, MFZN, ID=38	1	
D15	AIR TRAP	361A500100	FRPP	1	
D16	CLAMP HOSE	3611203900	ID=26, T=1.2	1	
D17	HOSE AIR	3613268600	ID=4, OD=8	1	
D18	TUB REAR	3618821100	FRPP	1	
D19	BEARING O	3616303200	6205Z KBC	1	
D20	BEARING HOUSING	3616303300	ALDC	1	
D21	BEARING I	3616303100	6206Z KBC	1	
D22	WATER SEAL	361A600100	NBR	1	
D23	GASKET TUB	3612321600	EPDM L=1675	1	
D24	UNIT MOTOR UNIVERSAL	36189L4H00	220VDC50HZ 2POLES PI340	1	
D25	CUSHION MOTOR A	NO DISPON	BUTYLE	2	
D26	CUSHION MOTOR B	NO DISPON	BUTYLE	2	
D27	SPECIAL WASHER	NO DISPON	T=4.0 M6	2	
D28	SPECIAL BOLT	NO DISPON	M6X43	2	
D29	DAMPER FRICTION	361A700120	120N, AKS, DL=197.5	2	
D30	DAMPER PIN	361A700210	AKS, D=14.5 EASY FIXING	2	
D31	HOSE VENT	3613267100	EPDM	1	
D32	CLAMP HOSE	3611204700	ID=27	1	
D33	BALANCER WEIGHT AS-T	NO DISPON	TOP, 6.0kg	1	
D34	SPECIAL SCREW	3616029400	SWCH 8.5X30	3	
D35	PULLEY	3618433200	ALDC	1	
D36	SPECIAL BOLT AS	3616029600	SWCH 10X30,F/L BOLT	1	
D37	BELT	3616591100	MEGADTNE 5RIB	1	
D38	HEATER WASH	3612800800	220V 2KW 24.2Ω	1	COMPATIBLE: 3612801500
D39	UNIT BUBBLE PUMP	36189L4120	220-240V DBK-204DB	1	
D40	SPRING SUSPENSION	3615114500	D3.2, L155	2	
****	TERMISTOR RESISTENCIA	361AAAAB00		1	

■ CABINET ASS'Y



No.	PART NAME	PART CODE	SPECIFICATION	Q'TY	REMARK
E01	CABINET	NO DISPON	SGCC, T0.8, PAINTING	1	
E02	SPECIAL SCREW	NO DISPON		2	
E03	FRAME UPPER	NO DISPON	SECC T1.2 55X580	1	
E04	SCREW TAPPING	NO DISPON	TTS"S" HEX F/L 4X8	4	
E05	FRAME TOP-L	NO DISPON	SECC T1.6 52x500	1	
E06	FRAME TOP-R	NO DISPON	SECC T1.6 52x500	1	
E07	STOPPER SPRING	3615202200	POM	2	
E08	COVER BACK	3611425500	0.4T, SGCC	1	
E09	SENSOR PRESSURE	3614825300	5V DRUM DL-DW11 INLET 90	1	
E10	FRAME LOWER	NO DISPON	SECC T1.2 160X580	1	
E11	BASE U L	3610392200	SECC T1.6 100x500	1	
E12	BASE U R	3610392300	SECC T1.6 100x500	1	
E13	UNIT DRAIN PUMP AS	36189L4F10	220-240V/50Hz B20-6 DRUM	1	
E14	CAP WATER REMAIN	3610916800	PP	1	
E15	HOSE WATER REMAIN	3613267800	EPDM, ID8.5, L200	1	
E16	LEG ADJUST AS	3617703800	MFZN M10x1 + BUTYLE	4	
E17	FILTER EMI	3611908300	NOISE FILTER	1	
E18	CUFF DRAIN HOSE	3616802500	PP	1	
E19	GUIDE DRAIN HOSE	NO DISPON	PP	1	
E20	HOSE DRAIN I AS	3613268400	L=870	1	
E21	CLAMP HOSE	3611204700	ID=27	1	

■ PLATE T AS + PANEL LOWER AS

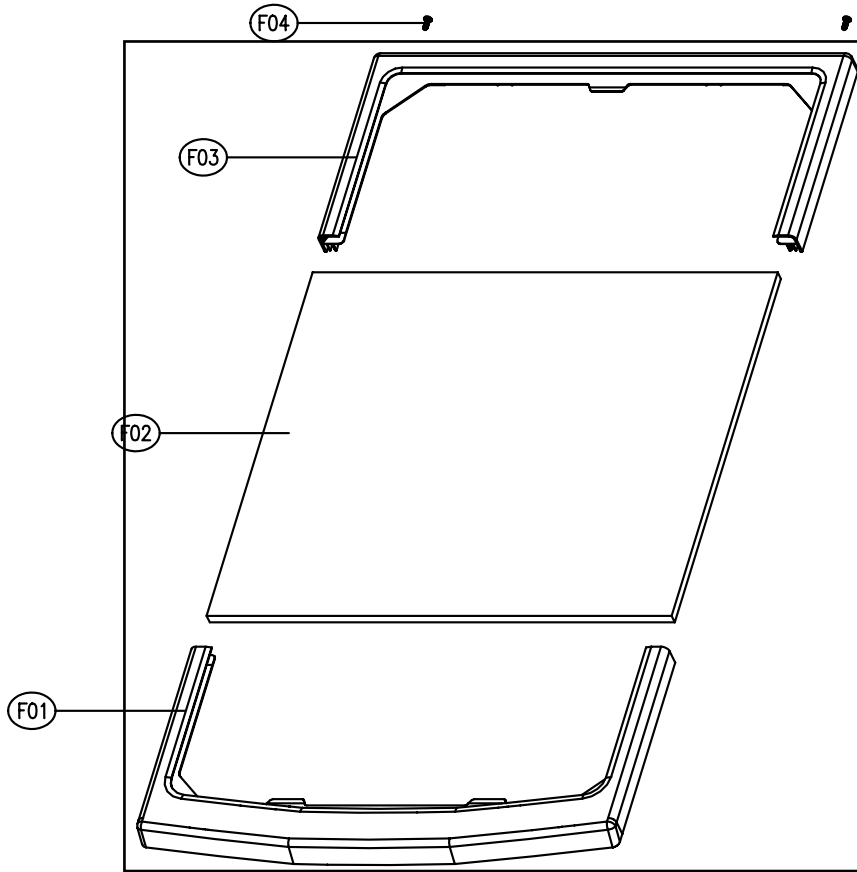
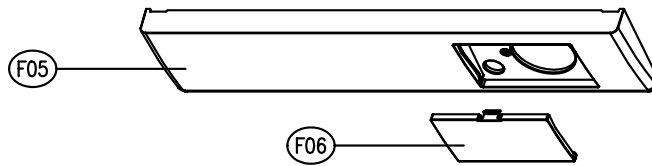


PLATE T AS
TAPA SUPERIOR
COMPLETA:
3614532900



No.	PART NAME	PART CODE	SPECIFICATION	Q'TY	REMARK
F01	FRAME PLATE F	3612205300	ABS	1	COMPLETO PLATE T AS: 3614532900
F02	PLATE T	NO DISPON	WOOD	1	
F03	FRAME PLATE R	3612205400	ABS	1	
F04	SCREW TAPPING	NO DISPON	T2S TRS 4X14 MFZN	2	
F05	PANEL LOWER	3614282800	ABS	1	
F06	COVER PUMP FILTER	3611425800	ABS	1	

DAEWOO

DAEWOO ELECTRONICS CORP.
686, AHYEON-DONG MAPO-GU SEOUL, KOREA
C.P.O. BOX 8003 SEOUL, KOREA
TELEX: DWELEC K28177-8
CABLE: "DAEWOOELEC"

PRINTED DATE: Mar. 2005

S/M No. :