

11. EXPLODED VIEW AND PARTS LIST

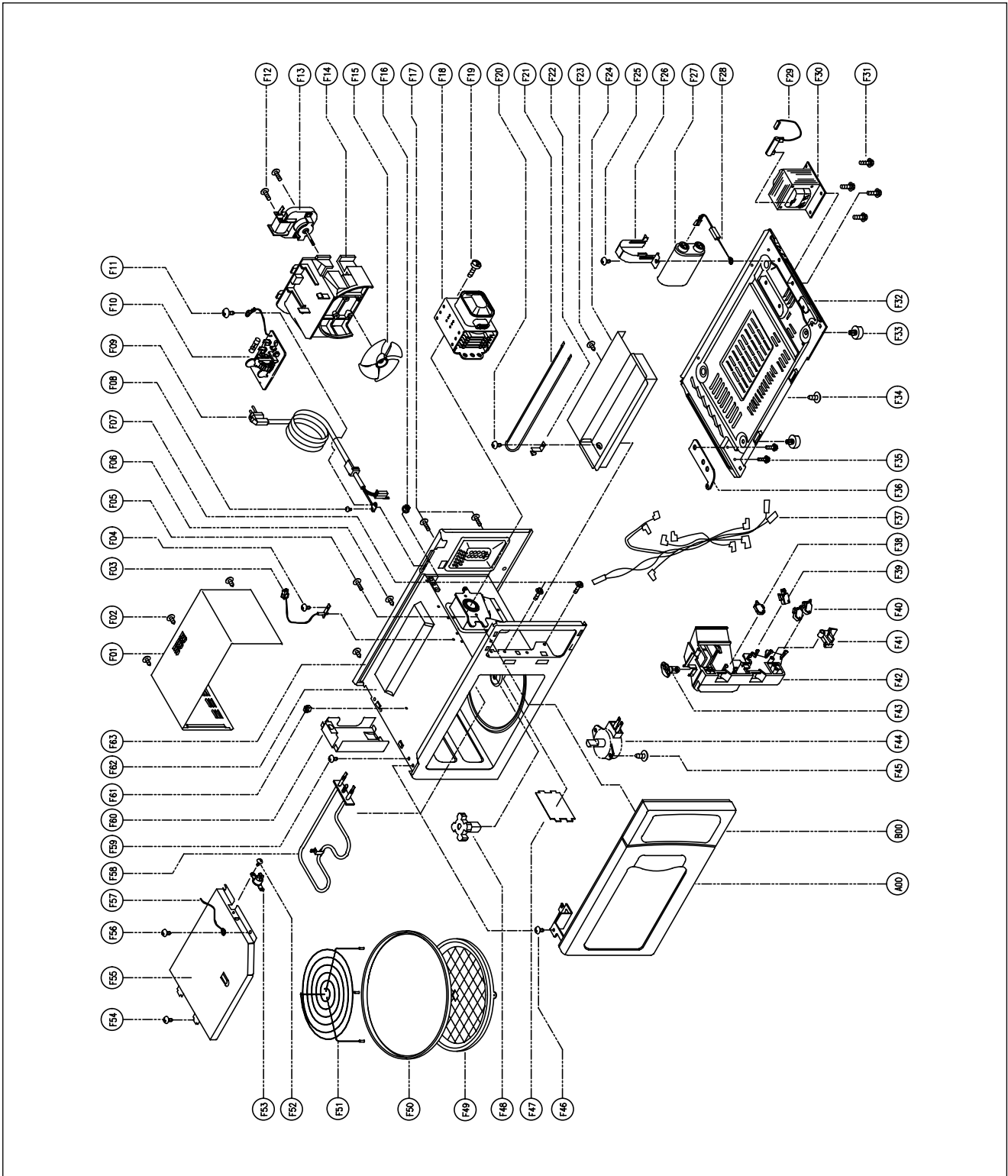
1. DOOR ASSEMBLY

Refer to 6. Disassembly and assembly.

2. CONTROL PANEL ASSEMBLY

Refer to 6. Disassembly and assembly.

3. TOTAL ASSEMBLY



✓ **Caution:** In this Service Manual, some parts can be changed for improving, their performance without notice in the parts list. So, if you need the latest parts information, please refer to PPL(Parts Price List) in Service information Center(<http://svc.dwe.co.kr>)

NO	PART NAME	DESCRIPTION	PART CORD	Q'TY
A00	DOOR AS	KOG-624Q	3511709230	1
B00	CONTROL-PANEL AS	KOG-624Q	PKCPSWEQ30	1
F01	CABINET AS	KOC-621Q0S	3510806710	1
F02	SCREW TAPPING	T1 TRS 4*10 MFZN	7112401011	3
F03	SENSOR TEMPERATURE	PTM-K312-D7	3514801400	1
F04	SCREW TAPPING	T1 TRS 4*10 MFZN	7112401011	1
F05	SCREW TAPPING	T2S TRS 4*12 MFZN	7122401211	1
F06	SCREW TAPPING	T1 TRS 4*10 MFZN	7112401011	4
F07	SCREW TAPPING	T2S TRS 4*12 MFZN	7122401211	2
F08	SCREW TAPPING	T1 TRS 4*10 MFZN	7112401011	1
F09	CORD POWER AS	3X1.5 80X80 120-RTML 1.4M	35113A5QJ5	1
F10	NOISE-FILTER	DWLF-M02	3518603710	1
F11	SCREW TAPPING	T1 TRS 4*10 MFZN	7112401011	1
F12	SCREW TAPPING	T2S PAN 4X30 MFZN	7121403011	2
F13	MOTOR SHADED POLE	230V 25W MW15CA-K01	3963512910	1
F14	GUIDE WIND	PP 5113MF6 A353B	3512513700	1
F15	FAN	P.P GF20	3511800100	1
F16	NUT HEX	6N-2-5 MFZN	7392500011	1
F17	SCREW TAPPING	T2S TRS 4*12 MFZN	7122401211	2
F18	MAGNETRON	2M218H(F)	3518002200	1
F19	SPECIAL SCREW	T2 FLANGE 4X13 PW SE M	3516002700	1
F20	SCREW TAPPING	T1 BIN 4*8 MFNI	7113400814	1
F21	HEATER *U	230V 400W R18374001	3512802000	1
F22	SUPPORTER HEATER *U	STS430 T0.5	3515304000	1
F23	SCREW TAPPING	T2S TRS 4*8 MFZN	7122400811	1
F24	COVER HEATER *U	STS430-2B/HL T0.6	3511404410	1
F25	SCREW TAPTITE	TT3 TRS 4X8 MFZN	7272400811	1
F26	HOLDER HV CAPACITOR	SECC T0.6	3513003200	1
F27	CAPACITOR HV	2100VAC 0.98UF #187	3518302200	1
F28	DIODE HV	"HVR-1X-3AB 12KV #187"	3518400400	1
F29	FUSE HV	5KV 0.7A HV-41A70-1 #187	3518700230	1
F30	TRANS HV	DW-R80S0-62T	3518118710	1
F31	SPECIAL SCREW	TT3 HEX 4X8 FLG MFZN	3516003700	4
F32	BASE	SBHG T0.8	3510310800	1
F33	FOOT	DASF-310	3512101400	4
F34	SCREW TAPPING	T1 TRS 4*10 MFZN	7112401011	5
F35	SCREW TAPTITE	TT3 TRS 4X8 MFZN	7272400811	2
F36	STOPPER HINGE *U AS	KOR-121M0A	3515202800	1
F37	HARNESS MAIN	KOC-621Q0S	3512718900	1
F38	SW MICRO	VP-533A-OF SPNO #187 200G	4415A17352	1
F39	SW MICRO	VP-531A-OF/SZM-V16-FA-61	4415A66910	1
F40	SW MICRO	VP-533A-OF SPNO #187 200G	4415A17352	2
F41	LEVER LOCK	POM	3513701300	1
F42	LOCK	POM	3513807900	1
F43	LAMP	BL 240V 25W T25 C7A H187	3513601600	1
F44	MOTOR SYNCRO	100/240V 4W GM-16-24FD16	3966030500	1
F45	SCREW TAPPING	T2S PAN 4X10 MFZN	7121401011	1
F46	SCREW TAPTITE	TT3 TRS 4X8 MFZN	7272400811	2
F47	COVER WAVE GUIDE	MICA T0.35	3511404710	1
F48	COUPLER	PTFE	3517401900	1
F49	GUIDE TRAY	SPP T1.0	3512512810	1
F50	TRAY METAL	SPP T0.6	3517205500	1
F51	TRAY RACK AS	KOC-621Q0S	3517208400	1
F52	SCREW TAPPING	T2S PAN 3X6 MFZN	7121300611	1
F53	THERMOSTAT	OFF:145 ON:135 V #187	3518903200	1
F54	SCREW TAPPING	T1 TRS 4*10 MFZN	7112401011	1
F55	COVER INSULATOR *T	SECC T0.5	3511404500	1
F56	SCREW TAPPING	T1 TRS 4*10 MFZN	7112401011	1
F57	CLAMP WIRE	SBHG	3511200400	1
F58	HEATER	230V 1150W 1B08965001	3512803300	1
F59	SCREW TAPTITE	TT3 TRS 4X8 MFZN	7272400811	2
F60	GUIDE AIR OUTLET	SA1D-80 T0.5	3512513110	1
F61	NUT HEX	6N-2-5 MFZN	7392500011	1
F62	CAVITY JOINT AS	KOC-621Q0S	3516107530	1
F63	REAR-PLATE *O	SBHG T0.6	3516503700	1