

1. DOOR ASSEMBLY

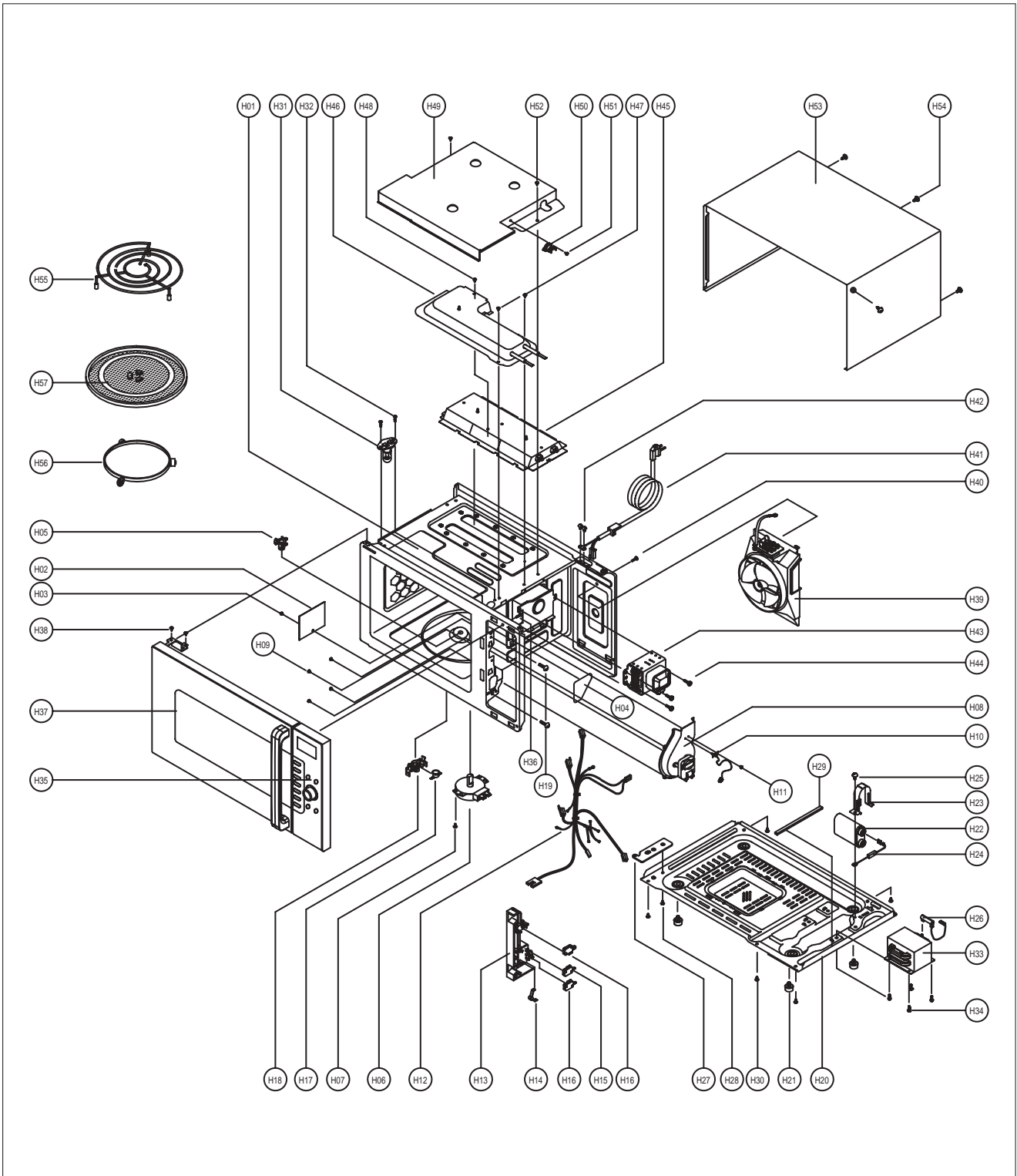
Refer to 6. Disassembly and assembly.

2. CONTROL PANEL ASSEMBLY

Refer to 6. Disassembly and assembly.

3. TOTAL ASSEMBLY

2) KOC-9Q4T



✓ **Caution** : In this Manual, some parts can be changed for improving, their performance without notice in the parts list. So, if you need the latest parts information, please refer to PPL(Parts Price List) in Service Information Center (<http://svc.dwe.co.kr>).

REF. NO	PART CODE	PART NAME	DESCRIPTION	Q'TY
H01	3516119900	CAVITY AS	KOC-9Q0T7S	1
H02	3511403800	COVER WAVE GUIDE	MICA T0.35	1
H03	7113400810	SCREW TAPPING	T1 BIN 4X8 STS430 MFZN	1
H04	3511414800	COVER LAMP	PE 0.1T	1
H05	3517413410	COUPLER	TEFLON	1
H06	3966031800	MOTOR SYNCRO	49TYD -5C	1
H07	7122400611	SCREW TAPPING	T2S TRS 4X6 MFZN	1
H08	3511801400	FAN CONVECTION AS	KOC-9Q0T7S	1
H09	7113400810	SCREW TAPPING	T1 BIN 4X8 STS430 MFZN	4
H10	3514801400	SENSOR TEMPERATURE	PTM-K312-D7	1
H11	7S432X4081	SPECIAL SCREW	TT3 TRS 4X8 SE MFZN	1
H12	3512783520	HARNESS MAIN	KOC-9Q0T7S	1
H13	3513820520	LOCK	PP	1
H14	3513702630	LEVER LOCK	POM	1
H15	4415A17352	SW MICRO	VP-533A-OF SPNO #187 200G	1
H16	4415A66910	SW MICRO	VP-531A-OF/SZM-V16-FA-61	2
H17	3518907020	THERMOSTAT	OFF:120 ON:60 H #187 NB	1
H18	3513003410	HOLDER THERMOSTAT	PP(BK)	1
H19	7122401211	SCREW TAPPING	T2S TRS 4X12 MFZN	2
H20	3510317520	BASE	SBHG T0.5	1
H21	3512101400	FOOT	DASF-310	2
H22	3518303100	CAPACITOR HV	2100VAC 0.98UF #187 +3 -0	1
H23	3513003200	HOLDER HV CAPACITOR	SECC T0.5	1
H24	3518400400	DIODE HV	HVR-1X-3AB 12KV #187	1
H25	7S432X4081	SPECIAL SCREW	TT3 TRS 4X8 SE MFZN	1
H26	3518702100	FUSE HV	5KV 0.7A T.H.V.060T	1
H27	3515201101	STOPPER HINGE *U	SCP-1 T2.5	1
H28	7272400811	SCREW TAPTITE	TT3 TRS 4X8 MFZN	1
H29	3517304300	FOAM	CR 15TX150X15	1
H30	7S312X40A1	SCREW SPECIAL	T1 TRS 4X10 SE MFZN	6
H31	3513601600	LAMP	BL 240V 25W T25 C7A H187	1
H32	4414H50000	FIXTURE AS	KOG-36150S	2
H33	3518124400	TRANS HV	R1S59E ES00	1
H34	3516003700	SPECIAL SCREW	TT3 HEX 4X8 FLG MFZN	4
H35	3516738700	CONTROL-PANEL AS	KOC-9Q4T7S	1
H36	7122401211	SCREW TAPPING	T2S TRS 4X12 MFZN	1
H37	3511728330	DOOR AS	KOC-9Q4T7S	1
H38	7272400811	SCREW TAPTITE	TT3 TRS 4X8 MFZN	2

✓ **Caution** : In this Manual, some parts can be changed for improving, their performance without notice in the parts list. So, if you need the latest parts information, please refer to PPL(Parts Price List) in Service Information Center (<http://svc.dwe.co.kr>).

REF. NO	PART CODE	PART NAME	DESCRIPTION	Q'TY
H39	3512529400	GUIDE WIND AS	KOC-9Q0T7S	1
H40	7122401211	SCREW TAPPING	T2S TRS 4X12 MFZN	1
H41	35113A5QJ5	CORD POWER AS	3X1.5 80X80 120-RTML 1.4M	1
H42	7S312X40A1	SCREW SPECIAL	T1 TRS 4X10 SE MFZN	2
H43	3518003700	MAGNETRON	2M218JFL 6CF	1
H44	3516003700	SPECIAL SCREW	TT3 HEX 4X8 FLG MFZN	3
H45	3512807530	HEATER *T AS	KOC-9Q0T7S	1
H46	3512525510	GUIDE AIR AS	KOC-9Q0T7S	1
H47	7112401011	SCREW TAPPING	T1 TRS 4*10 MFZN	2
H48	7113400810	SCREW TAPPING	T1 BIN 4X8 STS430 MFZN	1
H49	3513304400	INSULATOR HEATER *T	SBHG T0.4	1
H50	3518903800	THERMOSTAT	OFF:160 ON:115 V #187	1
H51	7121400611	SCREW TAPPING	T2S PAN 4X6 MFZN	1
H52	7S312X40A1	SCREW SPECIAL	T1 TRS 4X10 SE MFZN	2
H53	3510810800	CABINET AS	KOC-9Q0T7S	1
H54	7S312X40A1	SCREW SPECIAL	T1 TRS 4X10 SE MFZN	5
H55	3517212000	TRAY RACK AS	KOC-9Q0T7S 35MM	1
H56	3512512930	GUIDE ROLLER AS	KOR-121Q3A XAREC	1
H57	441CD35011	TRAY	GLASS DIA:325 1320G	1