

Refrigerators (Combis)

MODEL : * **ERF-415MIV**

ATENCIÓN:

MODELO DE FÁBRICA: ERF-414MNL

ETIQUETA DE N° SERIE:

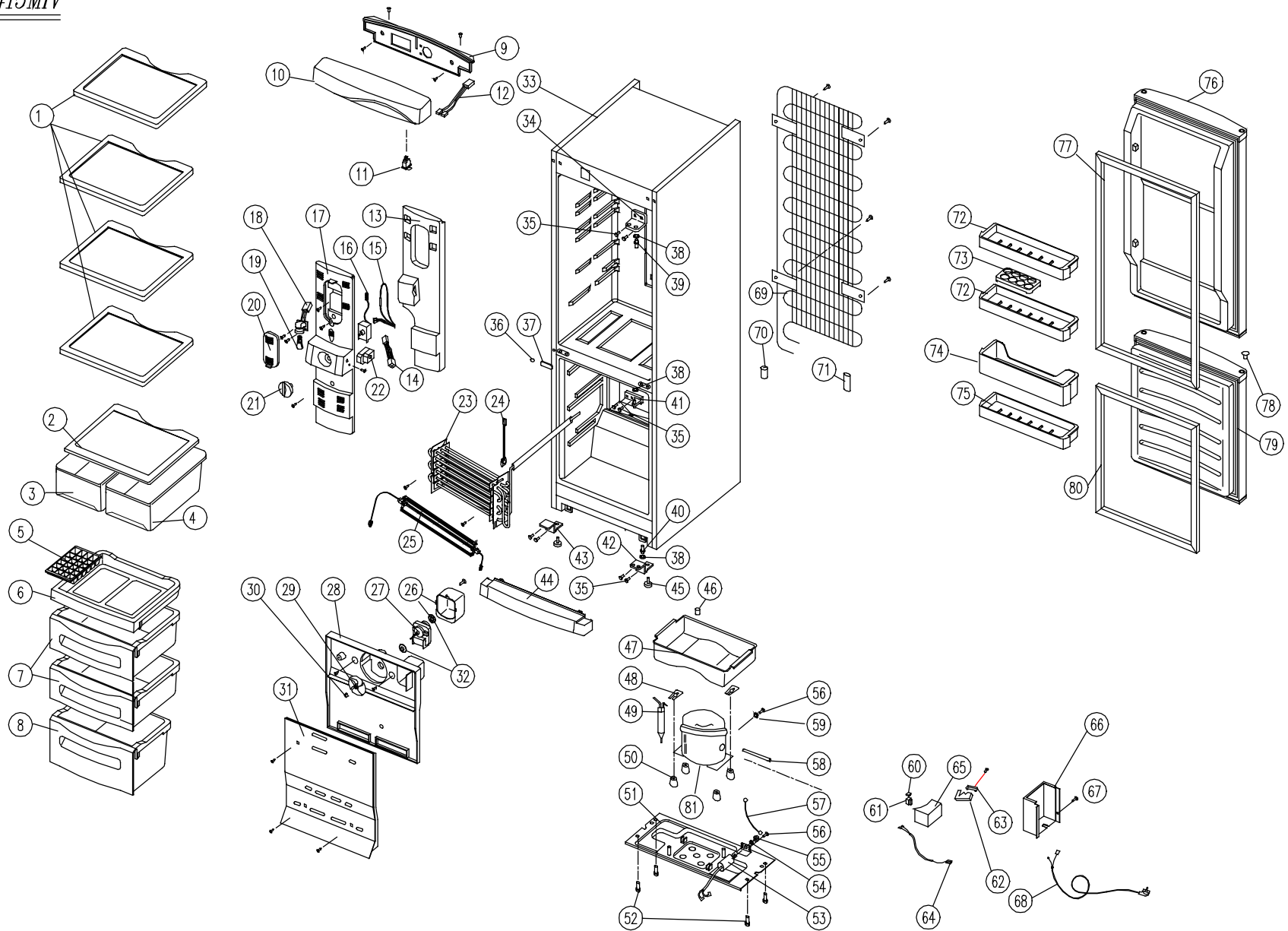
DOOR COLOR: N/G INOX 04

HANDLE TYPE: HIDDEN HANDLE (ASA TIPO UÑERA)

✓ Caution

: In this Manual, some parts can be changed for improving, their performance without notice in the parts list. So, if you need the latest parts information, please refer to PPL(Parts Price List) in Service Information Center(<http://svc.dwe.co.kr>).

ERF-415MIV



PART LIST:

04/05/2007

0

A261

MODEL NAME:	415M IV
TECHNICAL NAME:	414MNL

EXPLODE DRAWING N°	PART CODE	PART NAME	COLOUR	HANDLE TYPE	ERF-414MNL	REMARKS
1	3017839400	GLASS SHELF (INSERT TYPE) '04			4	
2	3001402200	COVER GLASS V/CASE (INSERT TYPE) '04			1	
3	DMS1181980	CASE VEGETABLE *L '04 TRANSPARENT DAEWOO 2006			1	
4	DMS1182080	CASE VEGETABLE *R '04 TRANSPARENT DAEWOO 2006			1	
5	3011163200	CASE ICING			1	
6	3011115940	CASE FD NO SILKPRINTING			1	
7	3011115410	CASE FC WITHOUT PRINTING			2	
8	3011115230	CASE FA WITHOUT PRINTING			1	
9	DMS0312920	BASE CONTROL PANEL36,38,41 NOBLE GREY	NOBLE GREY		1	
10	DMS4240220	PANEL CONTROL M **4 SERIES DAEWOO NG 2007	NOBLE GREY		1	
11	3018111500	SWITCH LAMP (EXCEPT 33.)			1	
12	NO DISPON	HARNESS LAMP S/W (mech models only)			1	
13	3013337300	INSULATOR MULTI DUCT M 39../41,,			1	
14	3012756600	HARNESS THERMO-TIMER A			1	
15	3012756610	HARNESS THERMO-TIMER B			1	
16	3018120910	THERMOSTAT 176DB, "OFF OPTION"			1	
17	3011452340	COVER MULTI DUCT 39../41.. (COOLING OFF)			1	
18	3017903900	SOCKET LAMP AS			1	
19	3013600700	LAMP 220V 15W			1	
20	3015503300	WINDOW LAMP MILKY COMMON			1	
21	3013401410	KNOB R			1	
22	3018128310	SWITCH D TIMER (INVENSYS) CF-3001-21			1	
23	3017045600	EVAPORATOR AS			1	
24	3012702400	SWITCH BI-METAL-FUSE			1	
25	3012806752	HEATER D AS MECH			1	
26	3010615600	BRACKET FAN MOTOR			1	
27	3011804710	MOTOR FAN AS A CLASS			1	
28	3018905601	LOUVER F B 38../41..			1	
29	3011801410	FAN GRADO A			1	
30	NO DISPON	FIXTURE FAN RING (SPRING) DAEWOO 2005			1	
31	3018913900	LOUVER F A 38../41..			1	
32	3010107100	ABSORBER FAN MOTOR			2	
33	-	ASSY CAB URT 41..			1	
34	3012908100	HINGE TOP L/R 36/34/38/39/41/40			1	
35	3016004900	SPECIAL BOLT C (WITH +)			8	
36	DMS0920210	CAP SCREW ((DARK GRAY)	DARK GREY		1	
37	3010920300	CAP SCREW HOLE			1	
38	3016005500	SPECIAL WASHER HINGE			3	
39	3014903200	SHAFT HINGE KOREA			1	
40	3014909100	SHAFT HINGE UNDER MODIFIED 2005			1	
41	3012924800	HINGE* M MODIFIED 2005 COMMON			1	
42	3012925510	HINGE UNDER R 36/34/38/39/41/40			1	
43	3012925500	HINGE UNDER L 36/34/38/39/41/40			1	
44	DMS1494920	COVER CAB BRACKET L (NOBLE GREY)	NOBLE GREY		1	
45	3012104600	FOOT ADJUSTING INJECTION			2	
46	3010919700	CAP DRAIN HOSE			1	
47	3011162700	CASE VAPORI (FOR SANYO COMPRESSOR)			1	
48	3012005300	FIXTURE COMP			2	
49	3016802200	DRYER ASSY 2005			1	
50	3010103400	ABSORBER COMP (SANYO COMPRESSOR)			4	

EXPLODE DRAWING N°	PART CODE	PART NAME	COLOUR	HANDLE TYPE	ERF-414MINL	REMARKS
51	NO DISPON	BASE COMP (SANYO COMPRESSOR)			1	
52	NO DISPON	SPECIAL SCREW A			4	
53	DMS6402129	CAPACITOR RUNNIING FINISH 4uF			1	
54	NO DISPON	SPECIAL WASHER R/C			1	
55	NO DISPON	SPECIAL NUT R/C			1	
56	NO DISPON	SCREW MACHINE (EARTH SANYO)			2	
57	NO DISPON	HARNESS EARTH (SANYO)			1	
58	NO DISPON	PIPE CHARGE (SANYO)			1	
59	NO DISPON	SPECIAL WASHER EARTH			2	
60	DMS1A00100	SWITCH OL 4TM232RHBYY-53 (SANYO)			1	
61	DMS1C00100	SWITCH PTC PTH7M330MD2 (SANYO)			1	
62	NO DISPON	CLAMP CORD A (SANYO)			1	
63	NO DISPON	CLAMP CORD B (SANYO)			1	
64	NO DISPON	HARNESS RELAY			1	
65	NO DISPON	RELAY BOX COVER (SANYO)			1	
66	NO DISPON	COVER MECH HOUSING			1	
67	NO DISPON	SCREW TAPPING 4*10			1	
68	3011343340	CORD POWER AS SCHUK 2 PIN			1	
69	3014434500	WI-CON ASSY			1	
70	NO DISPON	ABSORBER PIPE C EXTRUSION 20gr			1	
71	NO DISPON	SEALING DIVISION			1	
72	DMS9008740	POCKET EGG WITHOUT PRINTING			2	
73	3011163600	CASE EGG 2000			1	
74	3019008600	POCKET BOTTLE A			1	
75	3019013600	POCKET R DOOR			1	
76	DMS0085770	R DOOR HIDDEN CAPS S/S (N/G INOX 04) 394, 414	N/G INOX 04	HIDDEN	1	
77	3012306800	GASKET R DOOR AS 39../41.. WHITE			1	
78	NO DISPON	CAP DOOR BUSHING D/G	DARK GREY		1	
79	DMS0085760	F DOOR HIDDEN CAPS S/S (N/G INOX 04) 384, 414	N/G INOX 04	HIDDEN	1	
80	3012306700	GASKET F DOOR AS 38../41.. WHITE			1	
81	DMS0A00100	COMPRESSOR C-BE 140L5Z (SANYO)			1	