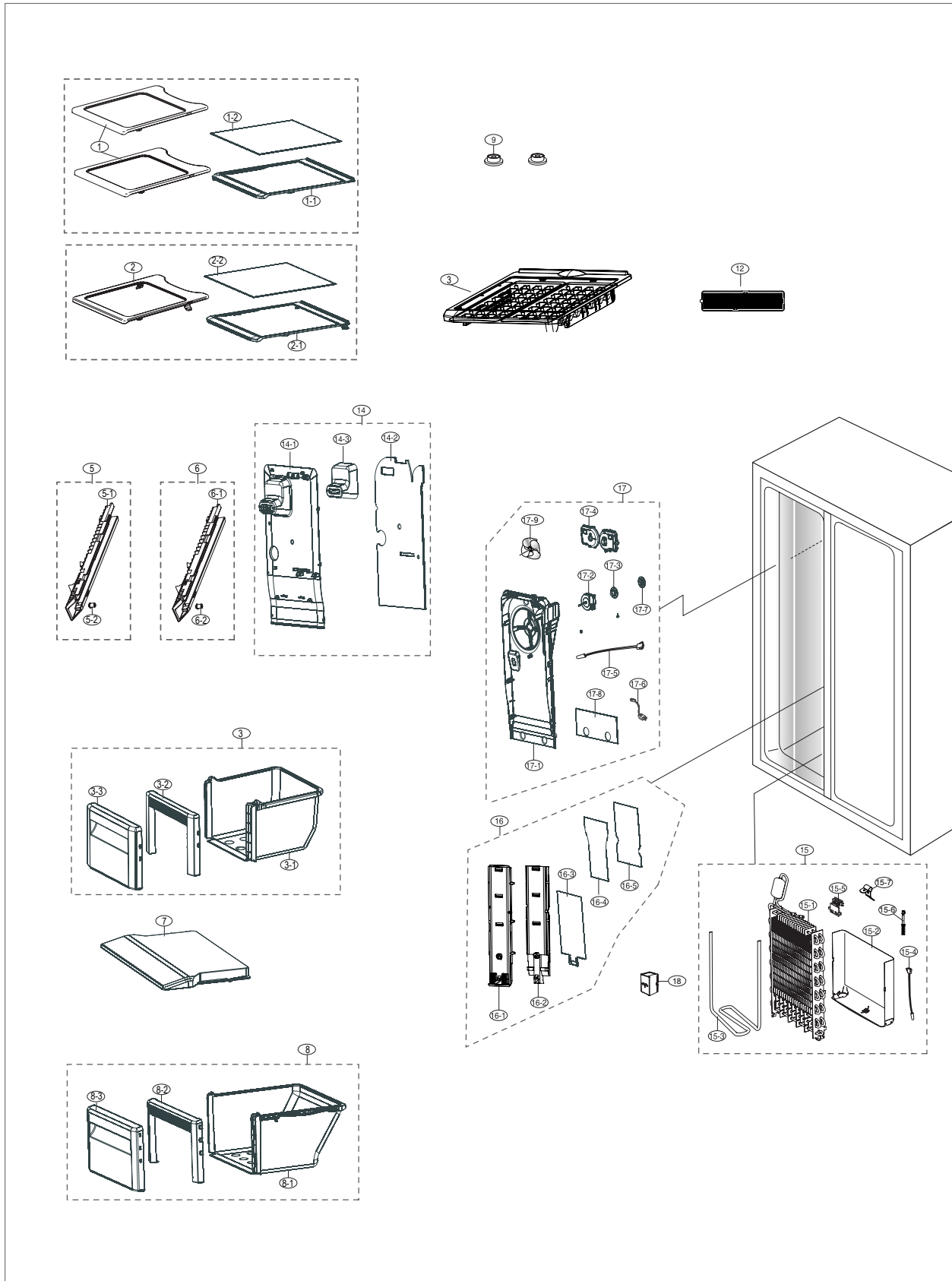


# EXPLODED VIEW PART LIST

## Freezer



# EXPLODED VIEW PART LIST

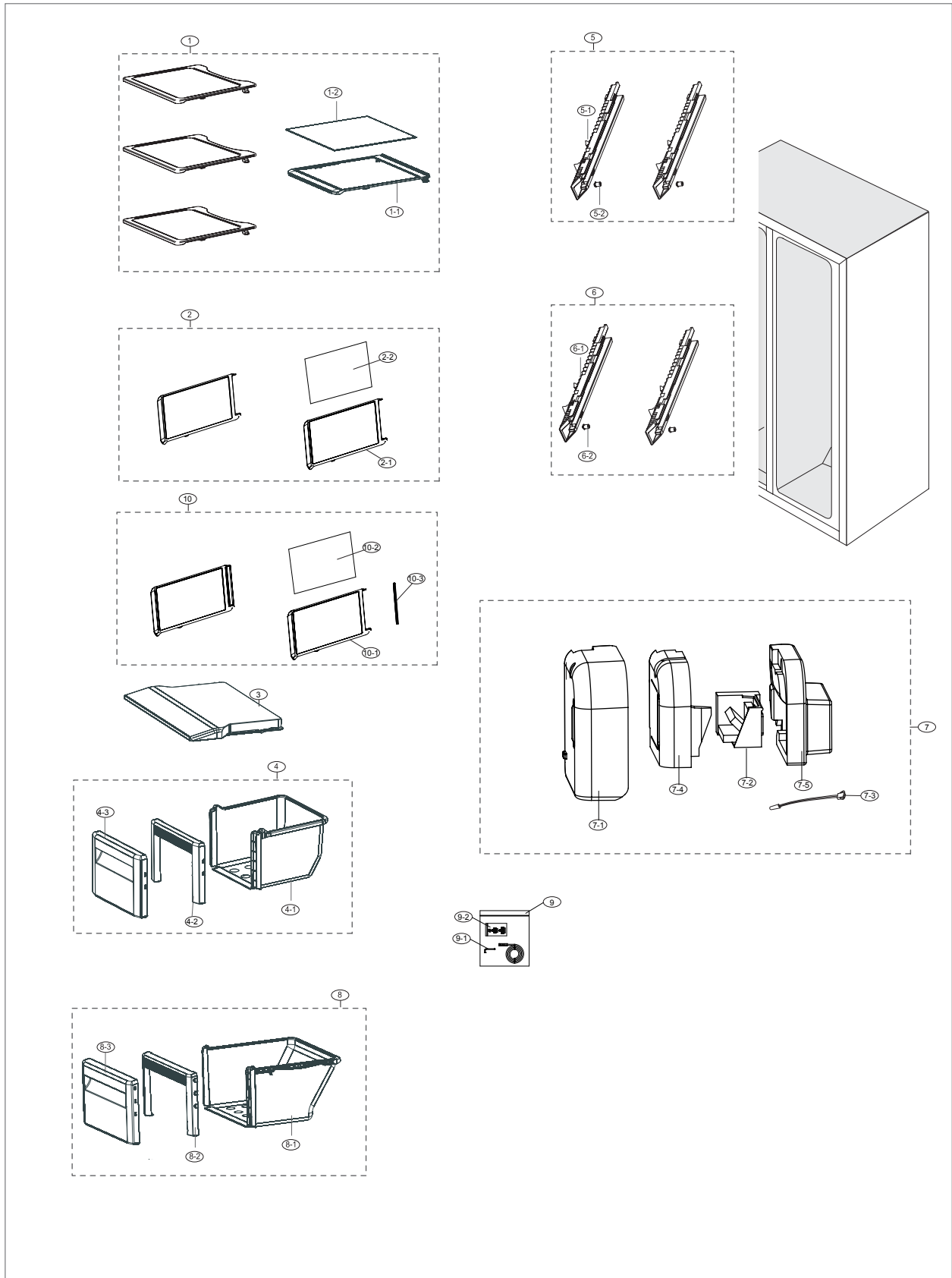
## • Parts List of Freezer

NO	CODE NO	PART NAME	Specification	Quantity	SA/SNA	SVC NO
1	DA97-06012B	ASSY SHELF FRE-HIGH	ES-PJT,SSEC,ABS+GLAS	2	SA	A1204
1-1	DA67-01907B	SHELF FRE-HIGH	ES-PJT,SSEC,ABS,-,-,-,COO	2	SNA	-
1-2	DA64-02458A	GLASS-SHELF FRE HIGH	ES-PJT,SSEC,GLASS	2	SNA	-
2	DA97-06013B	ASSY SHELF FRE-LOW	ES-PJT,SSEC,ABS+GLASS	1	SA	M0310
2-1	DA67-01904B	SHELF FRE-LOW	ES-PJT,SSEC,ABS,-,-,-,COOL	1	SNA	Z1179
2-2	DA64-02459A	GLASS-SHELF FRE LOW	ES-PJT,SSEC,GLASS	1	SNA	-
3	DA97-06014B	ASSY SHELF-ICE MAKER	ES-PJT,SSEC,08	1	SA	-
4	DA97-14362A	ASSY CASE BASKET-UP	ES-PJT,SSEC	1	SA	-
4-1	DA61-04009A	CASE-BASKET HIGH	ES-PJT,SSEC,PP,-,-,-,-,	1	SNA	-
4-2	DA63-04045A	COVER-BASKET FORNT HIGH B	ES-PJT,SSEC,HI	1	SNA	-
4-3	DA63-04044B	COVER AIR	ES-PJT,SSEC,GPPS,HB,-,PG383M,t	1	SNA	-
5	DA97-01291B	ASSY RAIL-BASKET L(ET)	ET-PJT,Cool-white	1	SA	-
5-1	DA61-00044C	RAIL-BASKET L(ET)	ET-PJT,HIPS,-,-,-,COOL	1	SNA	-
5-2	DA63-05275A	GROMMET-RAIL	ES-PJT,SSEC,NY-6,SC-93437R	1	SNA	-
6	DA97-01292B	ASSY RAIL-BASKET R(ET)	ET-PJT,Cool-white	1	SA	-
6-1	DA61-00045C	RAIL-BASKET R(ET)	ET-PJT,HIPS,-,-,-,COOL	1	SNA	-
6-2	DA63-05275A	GROMMET-RAIL	ES-PJT,SSEC,NY-6,SC-93437R	1	SNA	0
7	DA63-03960A	COVER-BASKET HIGH	ES-PJT,SSEC,HIPS,-,-,-	1	SA	A1182
8	DA97-14363A	ASSY CASE BASKET-LOW	ES-PJT,SSEC	1	SA	A1186
8-1	DA61-04046A	CASE-BASKET LOW	ES-PJT,SSEC,PP,-,-,-,-,-	1	SNA	-
8-2	DA63-04042A	COVER-BASKET FRONT LOW B	ES-PJT,SSEC,HIP	1	SNA	-
8-3	DA63-04044B	COVER AIR	ES-PJT,SSEC,GPPS,HB,-,PG383M,t	1	SNA	0
9	DA61-03916A	FIXER GROMMET-DOOR	ES-PJT,SSEC,ABS,-,COO	2	SNA	G0200
12	DA63-05460B	COVER LAMP	SUPER STAR,GPPS,W35,L145,tran	2	SA	A0280
14	DA97-12130A	ASSY COVER-MULTI FRE FRONT	ES-PJT,ASSY	1	SA	A1216
14-1	DA63-06673A	COVER-MULTI FRE FRONT	ES-PJT,SSEC,PP,COO	1	SNA	-
14-2	DA62-03436A	INSULATION-COVER MULTI FRE FRONT	ES-PJT,	1	SNA	-
15	DA96-00442E	ASSY EVAP FRE	ES-PJT,09,AL,230V,50HZ,300	1	SA	-
15-1	DA59-00372C	EVAP FRE	ES-PJT,09,FIN PIPE,AL,50HZ,300W	1	SNA	-
15-2	DA61-04026A	PLATE-DRAIN	ES-PJT,SSEC,GALVA,-,-,-,-,-	1	SA	-
15-3	DA47-00279C	HEATER-METAL SHEATH	-,ES-PJT,SSEC,-,300W	1	SA	-
15-4	DA32-00024L	SENSOR TEMP	502AT,ES-PJT,SSEC,-,5V,-,-,P	1	SA	-
15-5	DA61-00603A	FIXER-SENSOR	n-PJT,PP,-,-,-	1	SNA	-
15-6	DA47-10148U	THERMO FUSE-ASSY	ES-PJT,250V,10A,110□,G4	1	SA	-
15-7	DA61-07451A	PLATE-EVAP HEATER	NW2,AL,T0.7	1	SA	-
16	DA97-12129A	ASSY COVER EVAP-FRONT	ES-PJT,SSEC	1	SA	-
16-1	DA63-06674A	COVER EVAP-FRONT	ES-PJT,SSEC,PP,COOL WHI	1	SNA	-
16-2	DA62-03432A	INSULATION-COVER EVAP	ES-PJT,SSEC,FOAM-P	1	SNA	-
16-3	DA61-04022A	PLATE-HEATER EVAP	ES-PJT,SSEC,GALVA,-,-,-	1	SNA	0
16-4	DA61-04024A	PLATE-INS EVAP	ES-PJT,SSEC,HIPS,T1.0,-,-	1	SNA	0



# EXPLODED VIEW PART LIST

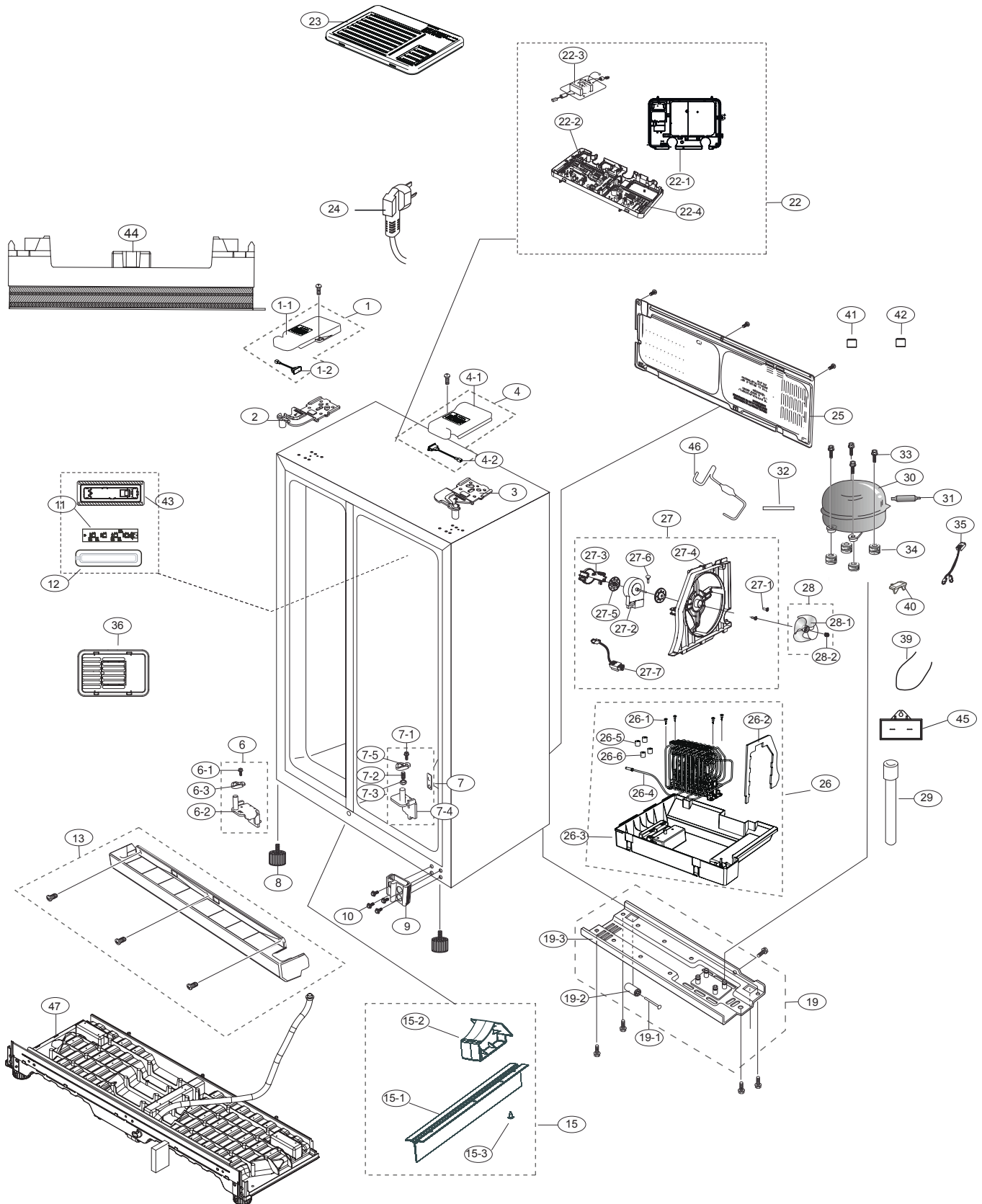
## Fridge





# EXPLODED VIEW PART LIST

## Cabinet



# EXPLODED VIEW PART LIST

## • Parts List of Cabinet

NO	CODE NO	PART NAME	Specification	Quantity	SA/SNA	SVC NO
1	DA97-14174H	ASSY COVER HINGE-UP LEFT	ES,NOBLE GRAY	1	SA	0
1-1	DA63-03958P	COVER HINGE-UPP L	ES,HIPS,NobleGray(GY00	1	SA	-
1-2	DA34-00046B	SWITCH-REED	KYESH,JST,200V,0.5A,DC,L90	1	SA	Z1142
2	DA61-03933C	HINGE-UPP L	ES-PJT,SSEC,10,SHP1,T3.0,ZPC	1	SA	M0286
3	DA61-03932C	HINGE-UPP R	ES-PJT,SSEC,10,SHP1,T3.0,ZPC	1	SA	A0813
4	DA97-14175H	ASSY COVER HINGE-UP RIGHT	ES,NOBLE GRAY	1	SA	0
4-1	DA63-03959P	COVER HINGE-UPP R	ES,HIPS,NobleGray(GY00	1	SA	-
4-2	DA34-00046B	SWITCH-REED	KYESH,JST,200V,0.5A,DC,L90	1	SA	Z1142
6	DA97-05765B	ASSY HINGE LOW-L	ES-PJT,SSEC	1	SA	M0245
6-1	6003-001435	SCREW-TAPTYPE	HWH,+ ,S,M5,L12.7,ZPC2(WHT)	1	SNA	M0210
6-2	DA66-00343A	CAM-RISER	USP05(ATOP,ET),NY-66(2110R),BL	1	SNA	M0266
6-3	DA61-03941C	HINGE-LOW L	ES-PJT,SSEC,SCP1+SM45C	1	SNA	A0947
7	DA97-01763F	ASSY HINGE LOW-R	N-PJT,SSEC,ASSY,10.5 GA	1	SA	M0246
7-1	6003-001435	SCREW-TAPTYPE	HWH,+ ,S,M5,L12.7,ZPC2(WHT)	1	SNA	M0210
7-2	6011-001442	BOLT-SOCKET	M8,L15,ZPC(BLK),SCM435,4mm,F	1	SNA	0
7-3	6021-001125	NUT-HEXAGON	3,M8,ZPC(WHT),SWCH10A	1	SNA	-
7-4	DA61-01608E	HINGE-LOW R	N-PJT,SSEC,10,SHP1,T4.5,ZPC(	1	SA	0
7-5	DA66-00343A	CAM-RISER	USP05(ATOP,ET),NY-66(2110R),BL	1	SNA	-
8	DA61-30102A	FOOT-FRONT	SR-F5670,PP,NTR,ZPC2-Y	2	SNA	A0577
9	DA61-03151C	BRACKET HINGE-LOW	N07-PJT,2008GVE,AL-606	1	SNA	0
10	DA60-10124A	SCREW-HEX	HWH,-,-,M6,L16,ZPC(WHT,YEL),SW	4	SNA	-
11	DA92-00150C	ASSY PCB KIT	110*20mm	2	SA	Z1144
12	DA63-05460B	COVER LAMP	SUPER STAR,GPPS,W35,L145,tran	2	SA	A0280
13	DA63-04907K	COVER LEG-FRONT	ES-PJT,PP,2.5,NobleGray(	1	SA	A0807
15	DA97-05776A	ASSY TRIM-BLADE	ES-PJT,SSEC,-,-,-,NTR,	1	SA	A1202
15-1	DA64-02382A	TRIM-BLADE	ES-PJT,SSEC,PVC,-,T1.5,-,-,-	1	SNA	M0296
15-2	DA61-03908A	SUPPORT-TRIM BLADE	ES-PJT,SSEC,PP,T2.0,N	1	SNA	0
15-3	6001-001122	SCREW-MACHINE	TH,+,-,M5,L16,ZPC(WHT),SWR	1	SNA	A0848
19	DA97-05772C	ASSY CHASSIS-COMP	ES-PJT,SSEC,GVE,-,T1.2	1	SA	-
19-1	DA60-90146A	PIN-CASTER	SR-289-429,MSWR10,OD6.0,L38,Z	2	SNA	0
19-2	DA61-00190A	CASTER	SR-32,PP,-,-,-,WHIRLPOOL	2	SNA	-
19-3	DA64-02381C	CHASSIS COMP	ES-PJT,SSEC,SGCC,T1.2,-,-,-	1	SNA	A0739
22	DA97-06024W	ASSY CASE-PBA MAIN	ES-PJT,SSEC,R600A,ADD	1	SNA	-
22-1	DA61-03917A	CASE PCB-PANEL	ES-PJT,SSEC,N-PP,-,-,-,MA	1	SA	A0927
22-2	DA92-00286Q	ASSY PCB MAIN	ES-PJT,SSEC,T1.6,L247,FRE	1	SA	-
22-3	DA27-00027D	COIL FILTER	ES,8mH,24,82*60,-25 ~ +85 □	1	SA	-
22-4	DA92-00279B	ASSY PCB SUB INVERTER	200~240V,50Hz/60Hz	1	SA	M0309
23	DA63-03963A	COVER PCB-PANEL	ES-PJT,SSEC,SBHG1,T0.4,W	1	SA	-
24	DA96-00929A	ASSY POWER CORD	UCP-2,EUROPE,16A,H05VV-F	1	SA	Z1187
25	DA97-06758F	ASSY COVER COMP	ES10-PJT,SSEC,T0.4,INVER	1	SA	-

# EXPLODED VIEW PART LIST

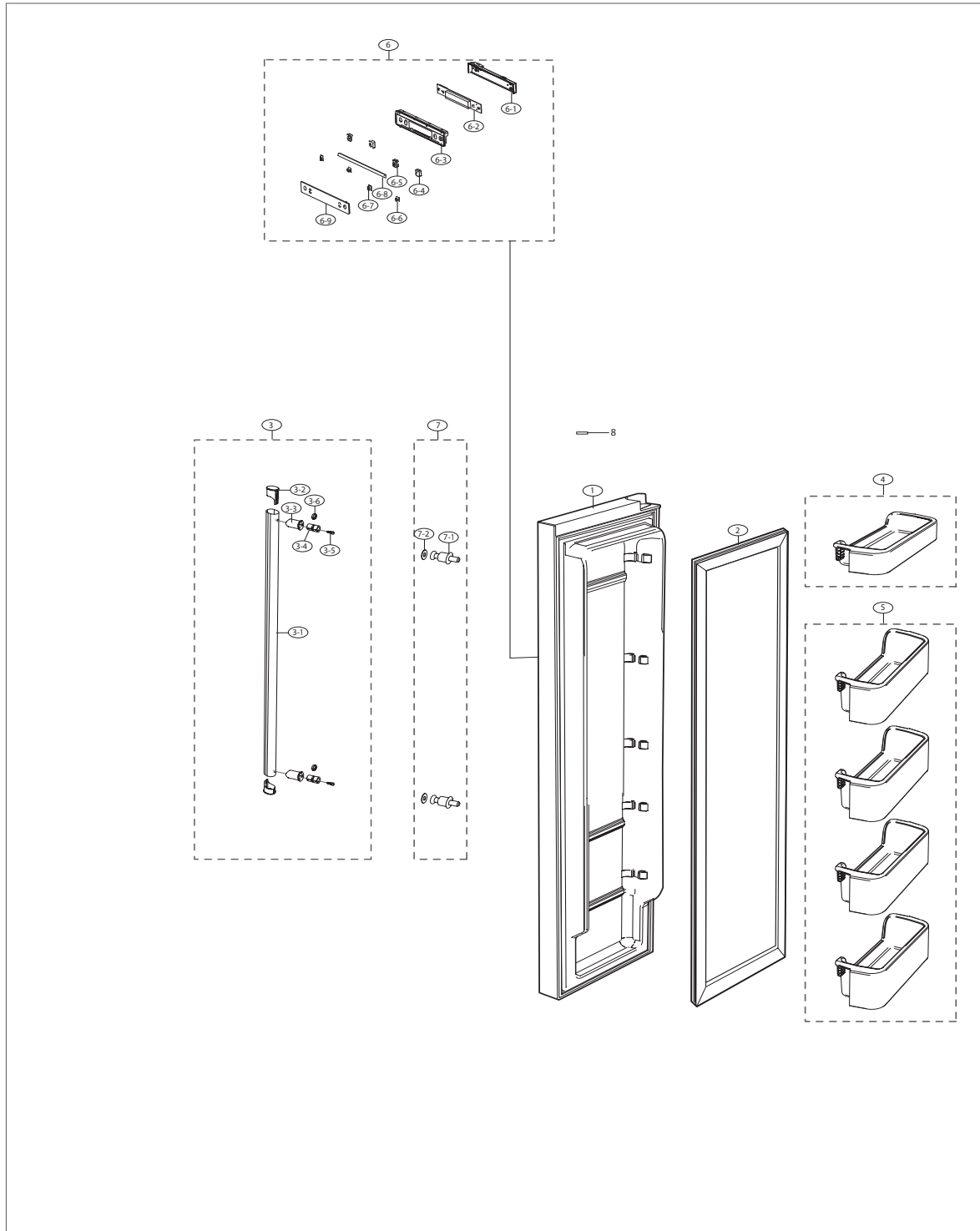
## • Parts List of Cabinet

NO	CODE NO	PART NAME	Specification	Quantity	SA/SNA	SVC NO
26	DA94-00213D	ASSY TRAY DRAIN-WATER	-, -, -, -, -, ES-PJT	1	SA	-
26-1	6009-001252	SCREW-SPECIAL	PH, +, -, M4.0, L20(12), ZPC(WH	4	SNA	-
26-2	DA62-03062E	SEAL CUTT-SPONGE	CC, FOAM-PE, WHT, T1, W20, L	1	SNA	-
26-3	DA63-03936B	TRAY DRAIN-WATER	ES-PJT, PP, BLK, SCRAP	1	SNA	Z1023
26-4	DA97-05807B	ASSY PIPE-SIPRAL CONDENSER	ES-PJT, SSEC, G	1	SA	-
26-5	DA63-40128A	GROMMET-SUB COND	-, NBR, -, -, -, -, -, DARK-	2	SNA	-
26-6	DA63-40171B	GROMMET-SUCT PIPE A	-, NBR, OD20, ID4, L20, -	2	SNA	-
27	DA97-05808A	ASSY SUPPORT-CIRCUIT MOTOR	ES-PJT, SSEC, -	1	SA	M0116
27-1	DA60-10130G	SCREW-TAPPING	TH, -, -, M4.2, L13, ZPC(WHT), S	2	SNA	G0412
27-2	DA31-00146B	MOTOR BLDC	DRCP5030LA, 1550, DC12V, 230mA, -	1	SA	A0998
27-3	DA61-03870A	BRACKET-CIRCUIT MOTOR	ES-PJT, SSEC, ABS, -, -	1	SNA	A0908
27-4	DA61-03871C	SUPPORT-CIRCUIT MOTOR	ES-PJT, SSEC, ABS, T2	1	SNA	A0907
27-5	DA63-01146A	GROMMET-MOTOR, REAR	A-TOP, NBR, BLACK, BLDC	2	SNA	M0179
27-6	DA63-40167A	GROMMET-COVER CHIL	SILICON, L16, WHITE	1	SNA	M2002
27-7	DA96-00042M	ASSY W/HARNESS-MOTOR	ES-PJT, SSEC, C-FAN	1	SNA	G0088
28	DA31-00010D	FAN-ASSY	ET, ZIPEL, ABS+GF, UNIT, Ø150	1	SNA	A0905
28-1	DA31-00015C	FAN-TURBO	ET-PJT, ABS+GF, GR-4010	1	SNA	0
28-2	DA61-20128A	SPRING ETC-FAN	STS304, PI8.8, ID7.8, OD9.8,	1	SNA	A0768
29	DA97-00359A	ASSY TUBE-DRAIN	ET-PJT, -	1	SNA	A1100
30	ENV4A5GL2J/SJ1	COMPRESSOR, BLDC IPM, 15.32CC, 220-240V, FAN	0	1	SA	Z1180
31	DA62-01469H	DRYER	W07, CU, OD18.8, T0.46, L115	1	SA	A0669
32	DA73-00050G	PIPE-CONN	TP2(M), ID5.15, OD6.35, T0.6	1	SA	0
33	DA60-20008A	BOLT-HEX	SWCH45K, WHITE, ZPC	4	SA	A0564
34	DA63-02617A	GROMMET COMP	USP05, EPDM, OD27.0, BLACK	4	SA	Z1112
35	DA39-00154H	WIRE HARNESS-COMP	35151-061*, 2005820-1, F	2	SA	A0035
36	DA63-01077C	COVER-PURIFIER	ES, 2008GVE, HIPS, NTR	1	SA	A0985
39	DA39-20389C	WIRE HARNESS-EARTH	1, YELLOW/GREEN, ST 710	1	SA	A0562
40	DA34-00004C	RELAY PROTECTOR O/L	4TM319SFBYY-82, BK190	1	SC	A0575
41	DA60-00280A	FITTING-LOKRING 33	GRAND/SAM/HERMES, 11SM	1	SA	0
42	DA60-00281A	FITTING-LOKRING 43	GRAND/SAM/HERMES, 11SM	1	SA	0
43	DA97-08671B	ASSY CASE LAMP	CC-PJT, ASSY NTR	2	SA	A0189
44	DA99-03667A	ASSY CUSHION LOW	ES-PJT, L958, W761, H172.5	1	SA	A0804
45	2301-001899	C-FILM, LEAD	100nF, 5%, 630V, TP, 18x8x15.5mm	1	SNA	-
46	DA97-06571B	ASSY PIPE CONNECT-SUCT	ES-PJT, SSEC, INVER	1	SNA	0
47	DA97-05759F	ASSY CABINET BOTTOM-FRONT	-, ES-PJT, SSEC,	1	SA	0



# EXPLODED VIEW PART LIST

## Freezer Door





# EXPLODED VIEW PART LIST

## Fridge Door

