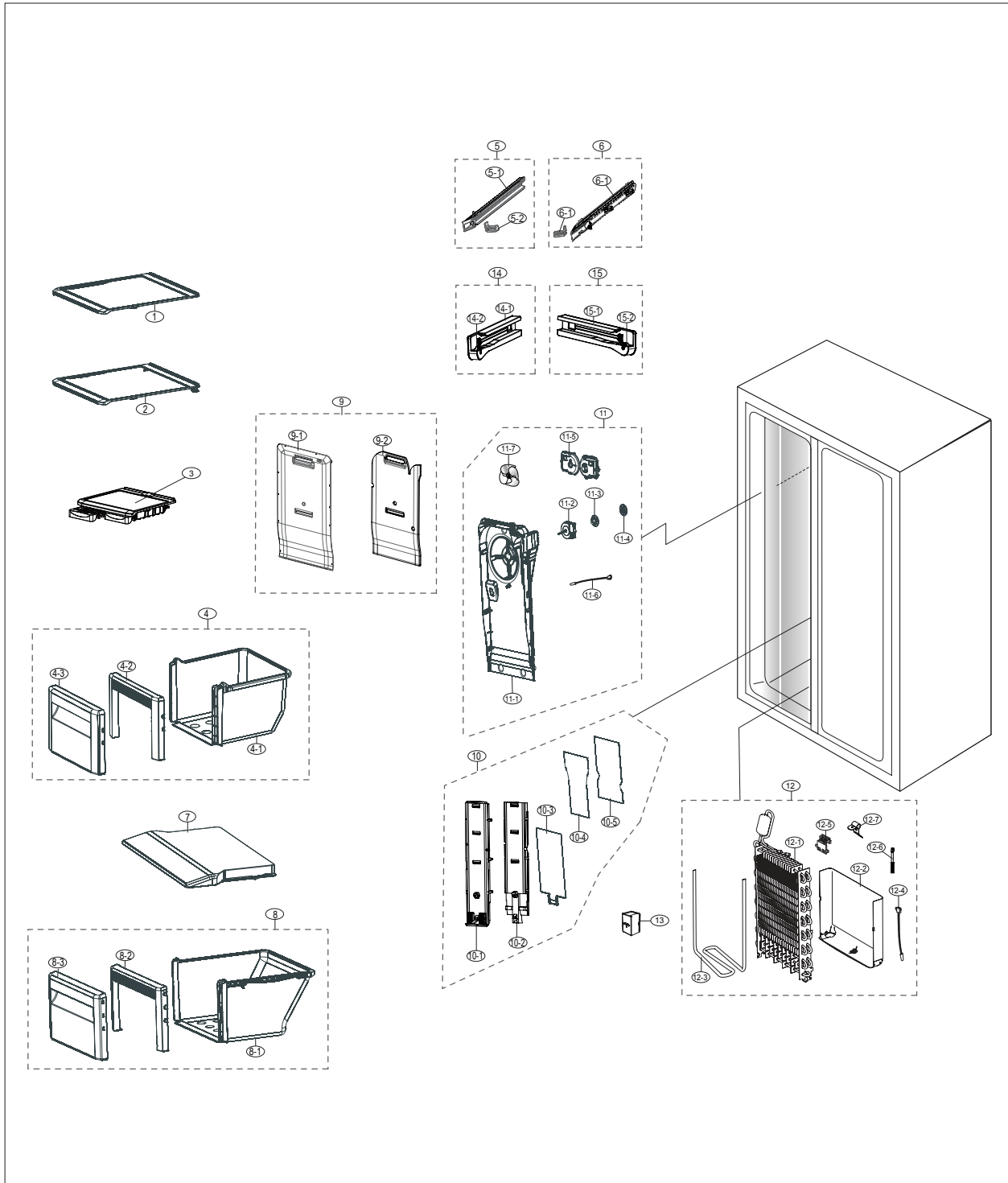


EXPLODED VIEW PART LIST

Freezer



EXPLODED VIEW PART LIST

• Parts List of Freezer

NO	CODE NO	PART NAME	Specification	Quantity	SA/SNA
1	DA67-03362A	SHELF FRE-HIGH	ES-PJT,SSEC,PP+GLASS,COOL WHITE	2	SA
2	DA67-03363A	SHELF FRE-LOW	ES-PJT,SSEC,PP+GLASS,COOL WHITE	2	SA
3	DA97-13305A	ASSY SHELF-ICE MAKER	ES-PJT,SSEC,,Assy	1	SA
4	DA97-14362A	ASSY CASE BASKET-UP	ES-PJT,SSEC	1	SA
4-1	DA61-04009A	CASE-BASKET HIGH	ES-PJT,SSEC,PP,-,-,-,-	1	SNA
4-2	DA63-04045A	COVER-BASKET FORNT HIGH B	ES-PJT,SSEC,HIPS,COOL WHT	1	SNA
4-3	DA63-04044B	COVER AIR	ES-PJT,SSEC,GPPS,HB,-,PG383M,transparency,BLUE	1	SA
5	DA97-01291B	ASSY RAIL-BASKET L(ET)	ET-PJT,Cool-white,SC-02740R,-,-,-	1	SA
5-1	DA61-00044C	RAIL-BASKET L(ET)	ET-PJT,HIPS,-,-,-,COOL-WHITE,SC-02740R	1	SNA
5-2	DA63-05275A	GROMMET-RAIL	ES-PJT,SSEC,PA6,SC-93437R	1	SNA
6	DA97-01292B	ASSY RAIL-BASKET R(ET)	ET-PJT,Cool-white,SC-02740R,-,-,-	1	SA
6-1	DA61-00045C	RAIL-BASKET R(ET)	ET-PJT,HIPS,COOL WHITE,S834S1,SC-02740R	1	SNA
6-2	DA63-05275A	GROMMET-RAIL	ES-PJT,SSEC,PA6,SC-93437R	1	SNA
7	DA63-03960A	COVER-BASKET HIGH	ES-PJT,SSEC,HIPS,-,-,-,-,COOL WHT,-	1	SA
8	DA97-14363A	ASSY CASE BASKET-LOW	ES-PJT,SSEC	1	SA
8-1	DA61-04046A	CASE-BASKET LOW	ES-PJT,SSEC,PP,-,-,-,-	1	SNA
8-2	DA63-04042A	COVER-BASKET FRONT LOW B	ES-PJT,SSEC,HIPS,-,-,L298,-,-,COOL WHT,-	1	SNA
8-3	DA63-04044B	COVER AIR	ES-PJT,SSEC,GPPS,HB,-,PG383M,transparency,BLUE	1	SA
9	DA97-12130A	ASSY COVER-MULTI FRE FRONT	ES-PJT,ASSY	1	SA
9-1	DA63-06673A	COVER-MULTI FRE FRONT	ES-PJT,SSEC,PP,COOL WHITE,BASIC	1	SNA
9-2	DA62-03436A	INSULATION-COVER MULTI FRE FRONT	ES-PJT,SSEC,N,W,S,PS FOAM,BASIC	1	SNA
10	DA97-12129A	ASSY COVER EVAP-FRONT	ES-PJT,SSEC	1	SA
10-1	DA63-06674A	COVER EVAP-FRONT	ES-PJT,SSEC,PP,COOL WHITE	1	SNA
10-2	DA62-03432A	INSULATION-COVER EVAP	ES-PJT,SSEC,PS FOAM	1	SNA
10-3	DA61-04022A	PLATE-HEATER EVAP	ES-PJT,SSEC,GALVA,-,-,-,-	1	SNA
10-4	DA61-04024A	PLATE-INS EVAP	ES-PJT,SSEC,HIPS,T1.0,-,-,-,-	1	SNA
10-5	DA02-10005A	TAPE-MASKING	FF Models,PAPER,NTR,W25	1	SNA
11	DA97-06067G	ASSY COVER-MULTI FRE REAR	ES-PJT,SSEC,GVE,-,-,-,-,-,BASIC	1	SA
11-1	DA63-04020B	COVER-MULTI FRE REAR	ES-PJT,SSEC,PP,-,-,-,-,-,BASIC	1	SNA
11-2	DA31-00020M	MOTOR BLDC	DREP3030LA,1375 RPM,-,DC12V,-,-,DC SOURCE,3.5W,N-PJT(F),NEW-MODEC,-,-,-,-,30~40 C	1	SA
11-3	DA63-01808A	GROMMET MOTOR	BLDC,NBR,BLACK,H20	1	SA
11-4	DA63-01146A	GROMMET-MOTOR,REAR	A-TOP,NBR,BLACK,BLDC	1	SA
11-5	DA63-01809A	COVER MOTOR-BLDC	BLDC-NEW,PP,NTR,-,-,-,-,BJ-730	1	SA
11-6	DA32-00024F	SENSOR TEMP	502AT/PX-41C/DKST1329GW,F-SENSOR,L100	1	SA
11-7	DA31-00052A	FAN PROPELLER	-,N-PJT,ABS,5 WING,φ145	1	SA
12	DA96-00442E	ASSY EVAP FRE	ES-PJT,09,AL,230V,50HZ,300W	1	SA
12-1	DA59-00372C	EVAP FRE	ES-PJT,09,FIN PIPE,AL,50HZ,300W	1	SNA
12-2	DA61-04026A	PLATE DRAIN	ES-PJT,SSEC,GI	1	SA
12-3	DA47-00279C	HEATER-METAL SHEATH	AC230V,ES, 176.3ohm,300W,INCOLOY840,1645mm,-,Bimetal,35965-9210,MgO	1	SA
12-4	DA32-00024L	SENSOR TEMP	502AT,PX-41C,DKST1329GW,ES-PJT,SSEC,5V,WHT,L250,PVC	1	SA

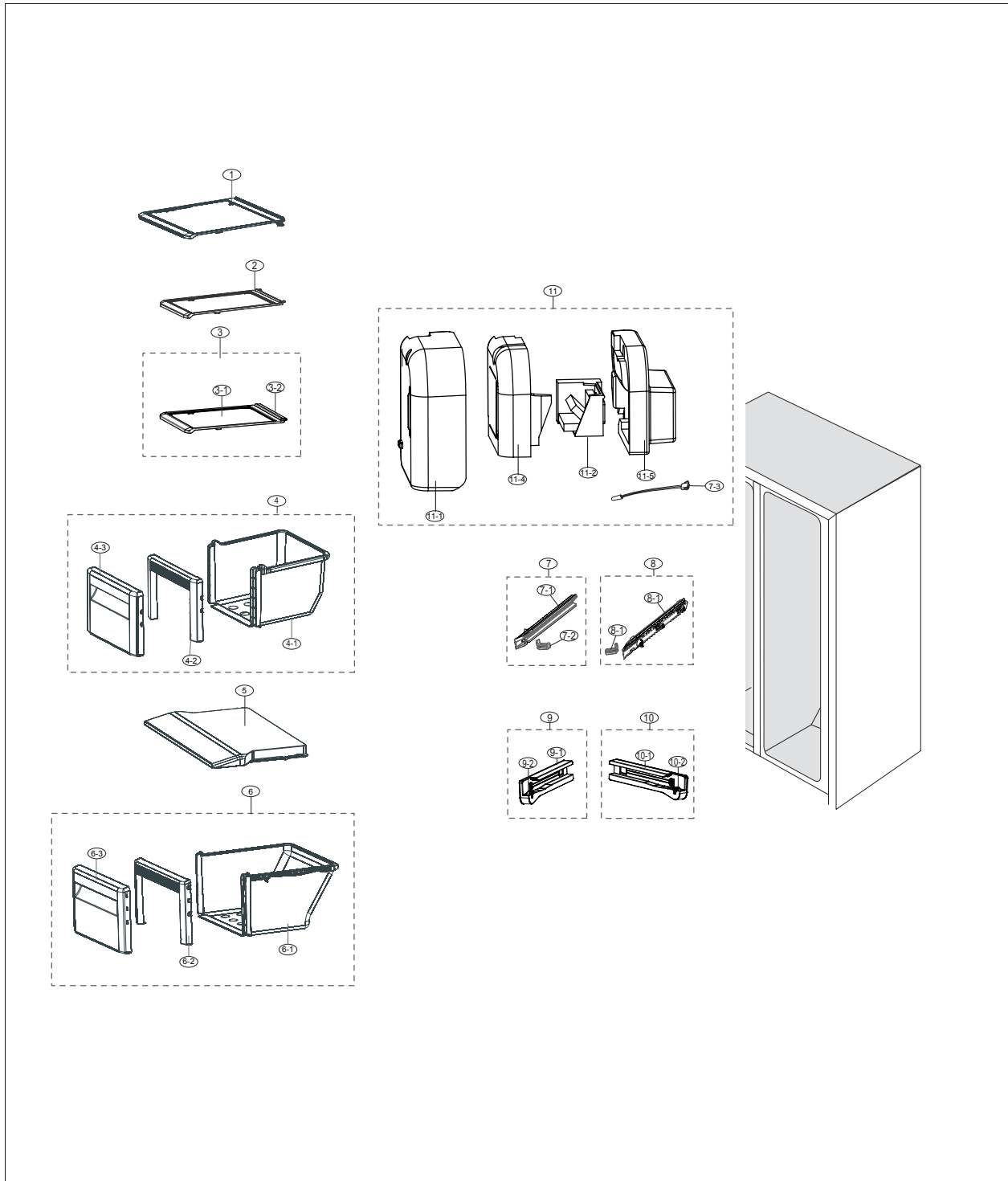
EXPLODED VIEW PART LIST

• Parts List of Freezer

NO	CODE NO	PART NAME	Specification	Quantity	SA/SNA
12-5	DA61-00603A	FIXER SENSOR	n-PJT,PP,T2.0,NATURAL,HB,BJ750, EP542RS	1	SA
12-6	DA47-10148U	THERMO FUSE-ASSY	AC250V,10A,109~110□,S.O.D,ETC(WIRE)	1	SA
12-7	DA61-07451A	PLATE-EVAP HEATER	NW2,AL,T0.7	1	SA
13	DA63-03788B	COVER-FIXER HOUSING	W07,SGCC,T0.4	1	SA
14	DA97-04793B	ASSY RAIL-LOW L	N07-PJT,SSEC,L220,NTR	1	SA
14-1	DA61-03078C	RAIL-LOW LEFT	SSEC,HIPS,NTR	1	SNA
14-2	DA66-00420A	ROLLER-RAIL LOW	N07-PJT,SSEC,POM,NTR	1	SA
15	DA97-04794B	ASSY RAIL-LOW R	N07-PJT,SSEC,L220,NTR	1	SA
15-1	DA61-03079C	RAIL-LOW RIGHT	SSEC,HIPS,NTR	1	SNA
15-2	DA66-00420A	ROLLER-RAIL LOW	N07-PJT,SSEC,POM,NTR	1	SA

EXPLODED VIEW PART LIST

Fridge



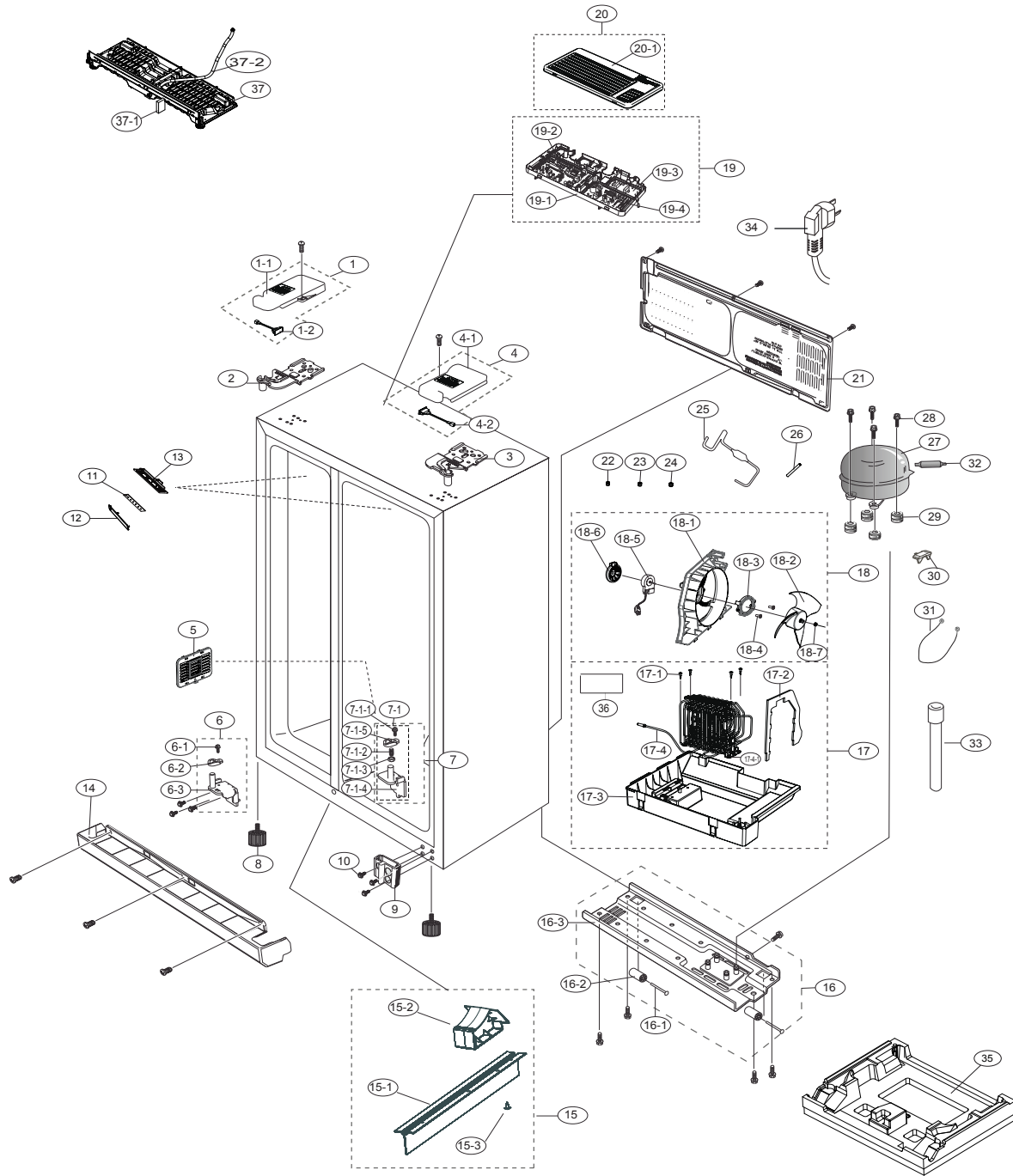
EXPLODED VIEW PART LIST

• Parts List of Fridge

NO	CODE NO	PART NAME	Specification	Quantity	SA/SNA
1	DA67-03366A	SHELF REF-HIGH	ES-PJT,SSEC,PP+GLASS,COOL WHITE	3	SA
2	DA67-03365A	SHELF REF-LOW	ES-PJT,SSEC,PP+GLASS,COOL WHITE	1	SA
3	DA97-12318A	ASSY SHELF REF-LOW	ES-PJT,SSEC,PP+GLASS	1	SA
3-1	DA67-03365A	SHELF REF-LOW	ES-PJT,SSEC,PP+GLASS,COOL WHITE	1	SA
3-2	DA67-03196B	SHELF-TRIM	ES-PJT,SSEC,PVC,COOL WHITE,PVC	1	SNA
4	DA97-06063B	ASSY CASE VEG-UP	ES-PJT,SSEC	1	SA
4-1	DA61-04037A	CASE-VEG HIGH	ES-PJT,SSEC,PP,COOL WHITE,W380.3,L440.8	1	SNA
4-2	DA63-04036A	COVER VEG-FRONT HIGH B	ES-PJT,SSEC,HIPS,-,W187,L434,-,-,COOL WHT,-	1	SNA
4-3	DA63-04037C	COVER VEG-FRONT UP A	ES-PJT,SSEC,GPPS,HB,-,PG383M,Transparency,BLUE	1	SNA
5	DA63-04053A	COVER VEG-HIGH	ES-PJT,SSEC,HIPS,W343,L439.8,COOL WHT	1	SA
6	DA97-06064B	ASSY CASE VEG-LOW	ES-PJT,SSEC	1	SA
6-1	DA61-04036A	CASE-VEG LOW	ES-PJT,SSEC,PP,-,W366,L429,COOL WHT,-	1	SNA
6-2	DA63-04029A	COVER VEG-FRONT LOW B	ES,HIPS,COOL WHITE	1	SNA
6-3	DA63-04031B	COVER VEG-FRONT LOW A	ES-PJT,SSEC,GPPS,HB,-,PG383M,Transparency,BLUE	1	SNA
7	DA97-01291B	ASSY RAIL-BASKET L(ET)	ET-PJT,Cool-white,SC-02740R,-,-,-	1	SA
7-1	DA61-00044C	RAIL-BASKET L(ET)	ET-PJT,HIPS,-,-,-,COOL-WHITE,SC-02740R	1	SNA
7-2	DA63-05275A	GROMMET-RAIL	ES-PJT,SSEC,PA6,SC-93437R	1	SNA
8	DA97-01292B	ASSY RAIL-BASKET R(ET)	ET-PJT,Cool-white,SC-02740R,-,-,-	1	SA
8-1	DA61-00045C	RAIL-BASKET R(ET)	ET-PJT,HIPS,COOL WHITE,S834S1,SC-02740R	1	SNA
8-2	DA63-05275A	GROMMET-RAIL	ES-PJT,SSEC,PA6,SC-93437R	1	SNA
9	DA97-04793B	ASSY RAIL-LOW L	N07-PJT,SSEC,L220,NTR	1	SA
9-1	DA61-03078C	RAIL-LOW LEFT	SSEC,HIPS,NTR	1	SNA
9-2	DA66-00420A	ROLLER-RAIL LOW	N07-PJT,SSEC,POM,NTR	1	SA
10	DA97-04794B	ASSY RAIL-LOW R	N07-PJT,SSEC,L220,NTR	1	SA
10-1	DA61-03079C	RAIL-LOW RIGHT	SSEC,HIPS,NTR	1	SNA
10-2	DA66-00420A	ROLLER-RAIL LOW	N07-PJT,SSEC,POM,NTR	1	SA
11	DA97-12132B	ASSY COVER DAMPER-REF	ES-PJT,COOL WHITE	1	SA
11-1	DA63-06675A	COVER DAMPER-REF	ES-PJT,SSEC,11,PP,COOL WHT	1	SNA
11-2	DA31-00071C	MOTOR DC-DAMPER	NSBY001TD1/FBZA-1750-15A,DC 12V,MAX 60mA,-W	1	SC
11-3	DA32-00024E	SENSOR TEMP	502AT/PX-41C/DKST1329GW,R-SENSOR,L300	1	SA
11-4	DA62-03433A	INSULATION-DAMPER REF UP	ES-PJT,SSEC,PS FOAM	1	SNA
11-5	DA62-03434A	INSULATION-DAMPER REF LOW	ES-PJT,SSEC,PS FOAM	1	SA

EXPLODED VIEW PART LIST

Cabinet



EXPLODED VIEW PART LIST

• Parts List of Cabinet

NO	CODE NO	PART NAME	Specification	Quantity	SA/SNA
1	DA97-14174K	ASSY COVER HINGE-UP LEFT	ES-PJT,HIPS,TAPE-AL FOIL,INOX GRAY(GY0034)	1	SA
1-1	DA63-03958K	COVER HINGE-UPP L	ES,HIPS,INOX 2008(DY0034)	1	SNA
1-2	DA34-00046B	SWITCH-REED	DC200V,0.5A	1	SA
2	DA61-03933C	HINGE-UPP L	ES-PJT,SSEC,10,SHP1,T3.0,ZPC,WHT	1	SA
3	DA61-03932C	HINGE-UPP R	ES-PJT,SSEC,10,SHP1,T3.0,ZPC,WHT	1	SA
4	DA97-14175K	ASSY COVER HINGE-UP RIGHT	ES-PJT,HIPS,TAPE-AL FOIL,INOX GRAY(GY0034)	1	SA
4-1	DA63-03959K	COVER HINGE-UPP R	ES-PJT,SSEC,HIPS,INOX 2008(DY0034)	1	SNA
4-2	DA34-00046B	SWITCH-REED	DC200V,0.5A	1	SA
5	DA63-01077C	COVER-PURIFIER	ES,2008GVE,HIPS,NTR	1	SA
6	DA97-05765B	ASSY HINGE LOW-L	ES-PJT,SSEC	1	SA
6-1	6003-001435	SCREW-TAPTYPE	HWH,+,S,M5,L12.7,ZPC2(WHT),SWCH22AKILLED STEEL(1018K)	1	SNA
6-2	DA66-00343A	CAM-RISER	USP05(ATOP,ET),PA66,BLACK	1	SNA
6-3	DA61-03941C	HINGE-LOW L	ES-PJT,SSEC,SCP1+SM45C	1	SNA
7	DA97-01763G	ASSY HINGE-LOW RIGHT	ES,ASSY,HINGE,SHAFT,LABEL	1	SA
7-1	DA97-01763F	ASSY HINGE LOW-R	N-PJT,SSEC,ASSY,10.5 GASKET	1	SA
7-1-1	6003-001435	SCREW-TAPTYPE	HWH,+,S,M5,L12.7,ZPC2(WHT),SWCH22AKILLED STEEL(1018K)	1	SNA
7-1-2	6011-001442	BOLT-SOCKET	M8,L13.4,ZPC(BLK),SCM435,4mm,FE-FZB	1	SNA
7-1-3	6021-001125	NUT-HEXAGON	3,M8,ZPC(WHT),SWCH10A	1	SNA
7-1-4	DA61-01608E	HINGE-LOW R	N-PJT,SSEC,10,PO-SPHC,T4.5,ZPC(WHT)	1	SA
7-1-5	DA66-00343A	CAM-RISER	USP05(ATOP,ET),PA66,BLACK	1	SNA
8	DA61-30102A	FOOT-FRONT	SR-F5670,PP,NATURAL,ZPC2-Y	2	SNA
9	DA61-03151C	BRACKET HINGE-LOW	ES-PJT,AI	1	SNA
10	DA60-10123C	BOLT-HEX	M6,L24,ZPC(WHT),SWRCH22A,HWH Head, 1018K	6	SA
11	DA41-00675J	ASSY LAMP LED	2,CEM-1,110*20,WHITE,SMW250-03G,120mA~160mA,DC12V,MIN 45lx	2	SA
12	DA63-05460B	COVER LAMP	SUPER STAR,GPPS,W35,L145,transparent	2	SA
13	DA97-08671B	ASSY CASE LAMP	CC-PJT,ASSY NTR	2	SA
14	DA63-04907E	COVER LEG-FRONT	ES-PJT,SSEC,PP,INOX GRAY	1	SA
15	DA97-05776A	ASSY TRIM-BLADE	ES-PJT,SSEC,-,-,-,NTR,-	1	SA
15-1	DA64-02382A	TRIM-BLADE	ES-PJT,SSEC,PVC,-,T1.5,-,-	1	SNA
15-2	DA61-03908A	SUPPORT-TRIM BLADE	ES-PJT,SSEC,PP,T2.0,NTR	1	SNA
15-3	6001-001122	SCREW-MACHINE	PH,+,M4,L10,ZPC(WHT),SWRCH18A,FLANGE,-	1	SNA
16	DA97-05772C	ASSY CHASSIS-COMP	ES-PJT,SSEC,GVE,-,T1.2,-,-,-	1	SA
16-1	DA60-90146A	PIN-CASTER	SR-289-429,MSWR10,OD6.0,L38,ZPC2	2	SNA
16-2	DA61-00190A	CASTER	SR-32,PP,-,-,-,WHIRLPOOL	2	SNA
16-3	DA64-02381C	CHASSIS COMP	ES-PJT,SSEC,SGCC,T1.0,GVE,HGI	1	SNA
17	DA97-15913A	ASSY TRAY DRAIN WATER	ES,ASSY	1	SNA
17-1	6009-001252	SCREW-SPECIAL	PH,+,M4.0,L20(12),ZPC(WHT),SWRCH18A,TAPP 1,-	4	SNA
17-2	DA62-03531A	SEAL-SUB-COND	AW-PJT,PE FOAM,T7,W178,L238	1	SNA
17-3	DA63-08125A	TRAY DRAIN-WATER	ES,PP,T2.0,BLACK,SCRAP	1	SA
17-4	DA97-11678B	ASSY CONDENSER-SUB	STEEL,WIRE	1	SA

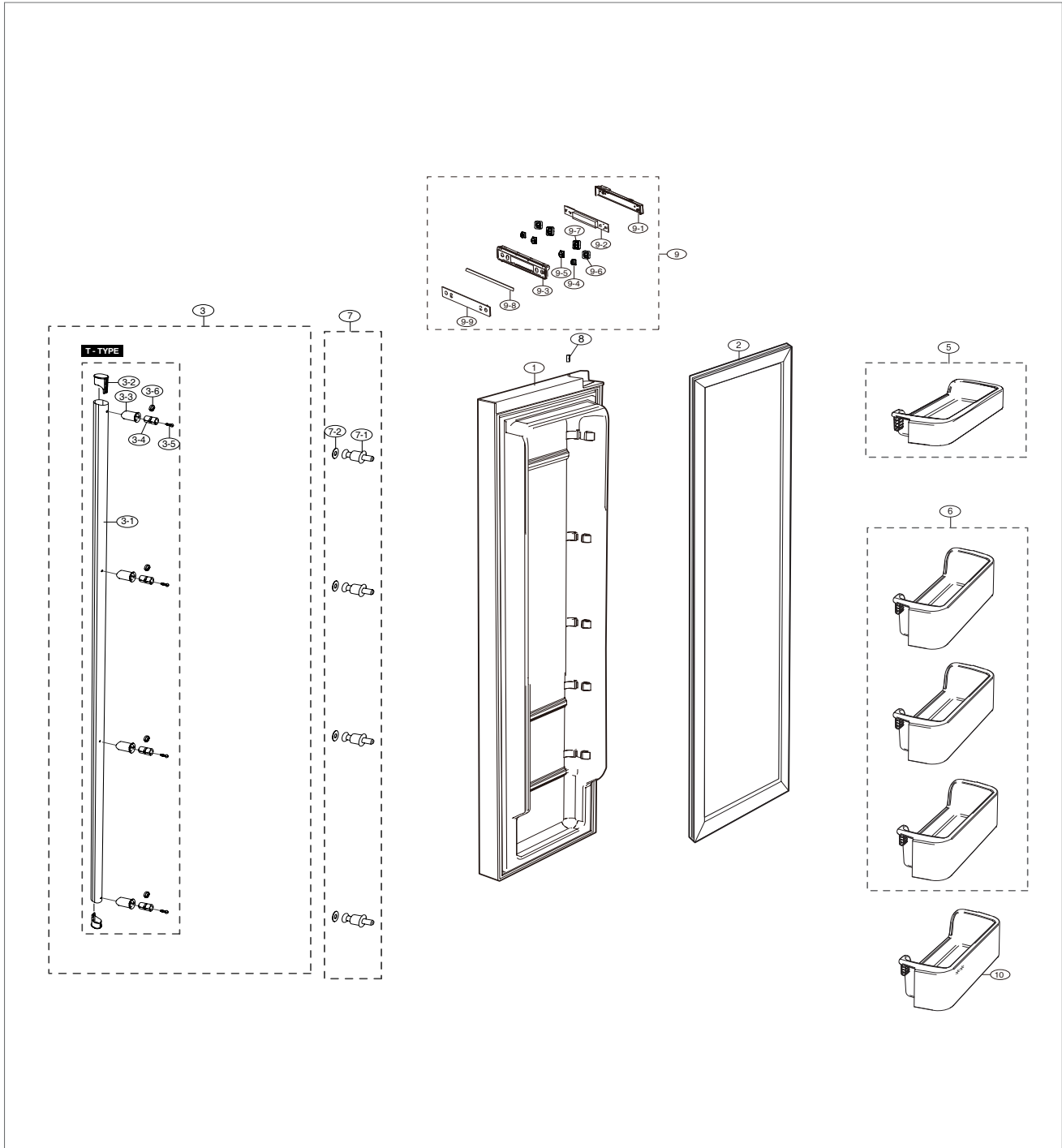
EXPLODED VIEW PART LIST

• Parts List of Cabinet

NO	CODE NO	PART NAME	Specification	Quantity	SA/SNA
17-4-1	DA63-40128A	GROMMET-SUB COND	-,NBR,-,-,-,-,-,-,-,DARK-GRAY	2	SA
18	DA97-15813A	ASSY SUPPORT-CIRCUIT MOTOR	ES	1	SNA
18-1	DA61-03063B	SUPPORT	NW2,PP,-	1	SNA
18-2	DA31-00320A	FAN	HM12,ABS+GLASSFIBER,GR-4010/NTR	1	SNA
18-3	DA61-08428A	BRACKET-CIRCUIT MOTOR	HM12,ABS,GRAY,ABS_S	1	SNA
18-4	6002-000213	SCREW-TAPPING	TH,+,1,M4,L12,ZPC(WHT),SWRCH18A	2	SNA
18-5	DA31-00305C	MOTOR BLDC	DRCP8020LA,1120±6%,12V,1.7W,SENSORLESS	1	SA
18-6	DA63-07065A	GROMMET-MOTOR	HM12,NBR,BLACK	1	SNA
18-7	DA61-20128A	SPRING ETC-FAN	STS304,PI8.8,ID7.8,OD9.8,L5.0,FD	1	SA
19	DA97-06024W	ASSY CASE-PBA MAIN	ES-PJT,SSEC,R600A,ADD FUSE,INVERTER,FRE DISPENSER,230V	1	SNA
19-1	DA61-03917A	CASE PCB-PANEL	ES-PJT,SSEC,PP,MANHATTAN SILVER,V0,INVERTER	1	SA
19-2	DA92-00647E	ASSY PCB MAIN	R/S OPTION,R600a,INV,ES-PJT,197*197mm,110-240V,SMPS doesn't exit,SMPS doesn't exit,FR-1	1	SA
19-3	DA27-00027D	COIL FILTER	ES,8mH,24,82*60,-25 ~ +85 □	1	SA
19-4	DA92-00279B	ASSY PCB INVERTER	ASSY PCB INVERTER,SUPER STAR,197*98.5,220-240V,13.2V,5V15V,5V,40W,ESSE3 AL	1	SA
20	DA97-15326A	ASSY COVER PCB-PANEL	super star,ASSY	1	SA
20-1	DA63-03963A	COVER PCB-PANEL	ES-PJT,SSEC,SBHG1,T0.4,W264.1,L520.1,-,-,-,-	1	SA
21	DA97-06758F	ASSY COVER COMP	ES10-PJT,SSEC,T0.4,INVERTER	1	SA
22	DA60-00279A	FITTING-LOKRING 16	GRAND/SAM/HERMES,11SMnPb30k,16	1	SA
23	DA60-00280A	FITTING-LOKRING 33	SUM23,33	1	SA
24	DA60-00281A	FITTING-LOKRING 43	GRAND/SAM/HERMES,11SMnPb30k,43	1	SNA
25	DA97-06571B	ASSY PIPE CONNECT-SUCT	ES-PJT,SSEC,INVERTER,C1220T	1	SNA
26	DA73-00050G	PIPE-CONN	TP2(M),ID5.15,OD6.35,T0.6	1	SA
27	ENV4A5GL2J/SJ1	COMPRESSOR	BLDC IPM,15.32CC,220-240V,FAN	1	-
28	DA60-20008A	BOLT-HEX	M6,L42.6(28.1),ZPC(SILVER), D9.0, FLANGE,SWRCH10A	4	SC
29	DA63-02617A	GROMMET COMP	USP05,EPDM,OD27.0,BLACK	4	SA
30	DA34-00004C	RELAY PROTECTOR O/L	4TM319SFBYY-82,BK190HL2X,S/T_13.0A, U/ T_3.10A,135,61	1	SC
31	DA39-20389C	ASSY WIRE HARNESS-EARTH	ALL,FREE VOLT,UL+IEC,UL,ALL,EARTH,200mm,1, ST710489-3*2	1	SA
32	DA62-01469H	DRYER	C1220T-H,115,SINGLE MOUTH	1	SA
33	DA97-11608A	ASSY CAP-DRAIN	NW2,-,-,SOFT-PVC	1	SA
34	DA96-00929A	CBF-POWER CORD	Black,2000	1	SA
35	DA99-03667A	ASSY CUSHION BOTTOM	ES-PJT,L958,W761,H161	1	SA
36	DA72-00218A	SEAL BUTYL RUBBER	RUBBER,BLACK,T3,W50,L80,-	1	SA
37	DA97-05759F	ASSY CABI BOTTOM-FRONT	-,ES-PJT,SSEC,GVE,BASIC,N,W,S	2	SNA
37-1	DA60-10124A	BOLT-HEX	M6,L16,ZPC(WHT),SWRCH18A,HWH Head	3	SA
37-2	DA60-90124A	RIVET	MSWR10,OD6.0,L56	4	SA

EXPLODED VIEW PART LIST

Freezer Door



EXPLODED VIEW PART LIST

• Parts List of Freezer Door

NO	CODE NO	PART NAME	Specification	Quantity	SA/SNA
1	DA94-01799G	ASSY DOOR FOAM FRE	ES,MG,N,V,S, LONG HANDLE	1	SA
2	DA63-07738A	GASKET DOOR-FRE	ES-PJT,PVC,GRAY	1	SA
3	DA97-06256P	ASSY HANDLE-BAR	ES-PJT,SSEC,SPRAY,Metal Graphite	1	SA
3-1	DA64-02389F	HANDLE BAR	ES-PJT,SSEC,ABS,L1633,SPRAY,Metal Graphite, LONG BAR,ABS+20%GF	1	SNA
3-2	DA67-01886J	CAP-HANDLE	ES-PJT,SSEC,ABS,SD-0150,-,Lead Gray, Metal Graphite(DAC-GR1104TP) SPRAY	2	SNA
3-3	DA67-01887F	CAP-SUPPORT HANDLE	ES,ABS,-,PLATINUM SILVER, SPRAY, Metal Graphite(DAC-GR1108S)	4	SNA
3-4	DA61-03906A	SUPPORT-HANDLE	ES-PJT,SSEC,ABS+PC	4	SNA
3-5	6002-001109	SCREW-TAPPING	BH,+,M4.2,L19,ZPC(WHT),SWRCH18A	4	SNA
3-6	DA61-03951A	STOPPER-HANDLE	ES-PJT,SSEC,SK5,-,-,-,-,-	4	SNA
5	DA63-04017B	GUARD-FRE UP	ES-PJT,PP,T2.5,COOL WHITE	1	SA
6	DA63-03996A	GUARD FRE-LOW	ES-PJT,SSEC,PP,-,-,-,COOL WHT,1 PIECE	3	SA
7	DA97-05790B	ASSY BRACKET-HANDLE	ES-PJT,SSEC,SWRC10A,T1.5	4	SA
7-1	DA61-03927A	BRACKET-HANDLE	ES-PJT,SSEC,SWRC10A,-,L10,FH	4	SNA
7-2	DA63-03943B	GROMMET-HANDLE	ES-PJT,SSEC,SI,T1.5,NTR	4	SNA
8	DA61-03949A	MAGNET	ES-PJT,SSEC,FERRITE,1600Gauss	1	SA
9	DA97-06019A	ASSY COVER DISPLAY	ES-PJT,SSEC,-,-,-,FRE ONLY DISPLAY	1	SA
9-1	DA61-04101A	CASE-PBA DISPLAY	ES-PJT,SSEC,PP,-,-,-,NTR,ONLY DISPLAY	1	SNA
9-2	DA41-00535A	ASSY PCB KIT LED	ASSY PCB KIT LED,ES-PJT,EN,W32,T1.6,L217.6,ONLY DISPLAY,R600a,VOCATION,YG	1	SA
9-3	DA63-04085A	COVER DISPLAY	ES-PJT,SSEC,N,S,PP,-,-,-,-,BLACK,FRE ONLY DISPLAY	1	SA
9-4	DA64-02453A	BUTTON-CONTROL C	ES-PJT,SSEC,ABS+PMMA,L15.9,W12.7,H8.3,BLACK,FRE ONLY DISPLAY	2	SNA
9-5	DA64-02384A	BUTTON-CONTROL B	ES-PJT,SSEC,ABS+PMMA,L18.7,W12.7,H6.9,-,BLACK,K,D,N,W	2	SNA
9-6	DA63-04216A	GROMMET-BUTTON CONTROL C	ES-PJT,SSEC,SI,T1.5,W15.5,L18.7,BLK,DISP	2	SNA
9-7	DA63-03945A	GROMMET-BUTTON CONTROL B	ES-PJT,SSEC,SI,BLACK,DISP	2	SNA
9-8	DA64-02431A	TRIM-DECO DISPLAY	ES-PJT,SSEC,ABS,DA SILVER,PLATING,FRE DISPENSER	1	SNA
9-9	DA63-04214A	COVER DISPLAY-SUB	ES-PJT,SSEC,ACRYL,T3,L237.4,W39,EN,ONLY DISPLAY,VOCATION	1	SNA
10	DA63-03996B	GUARD FRE-LOW	ES-PJT,ADD FILM,PP,COOL WHT,1 PIECE	1	SA

EXPLODED VIEW PART LIST

Fridge Door

