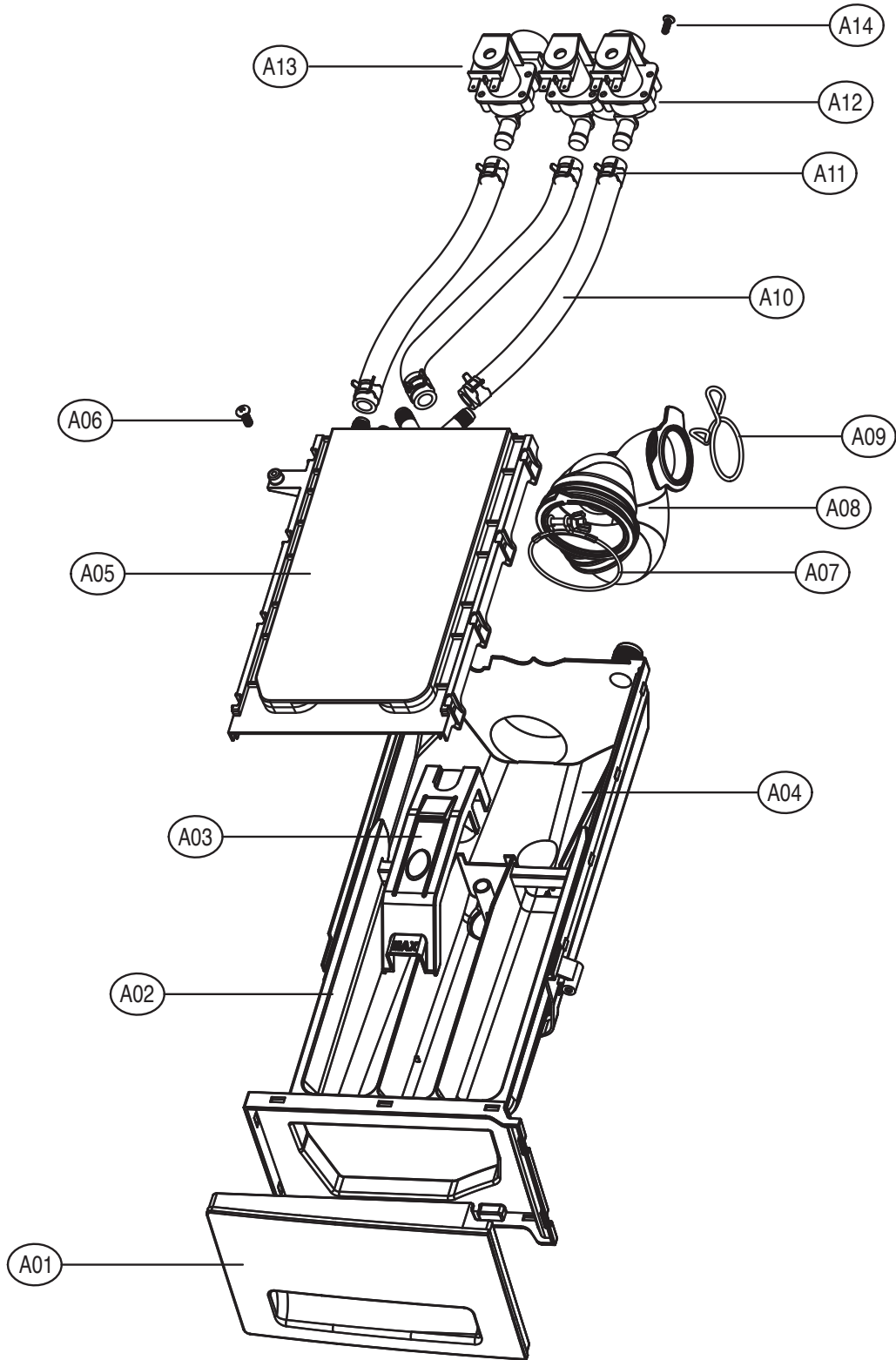


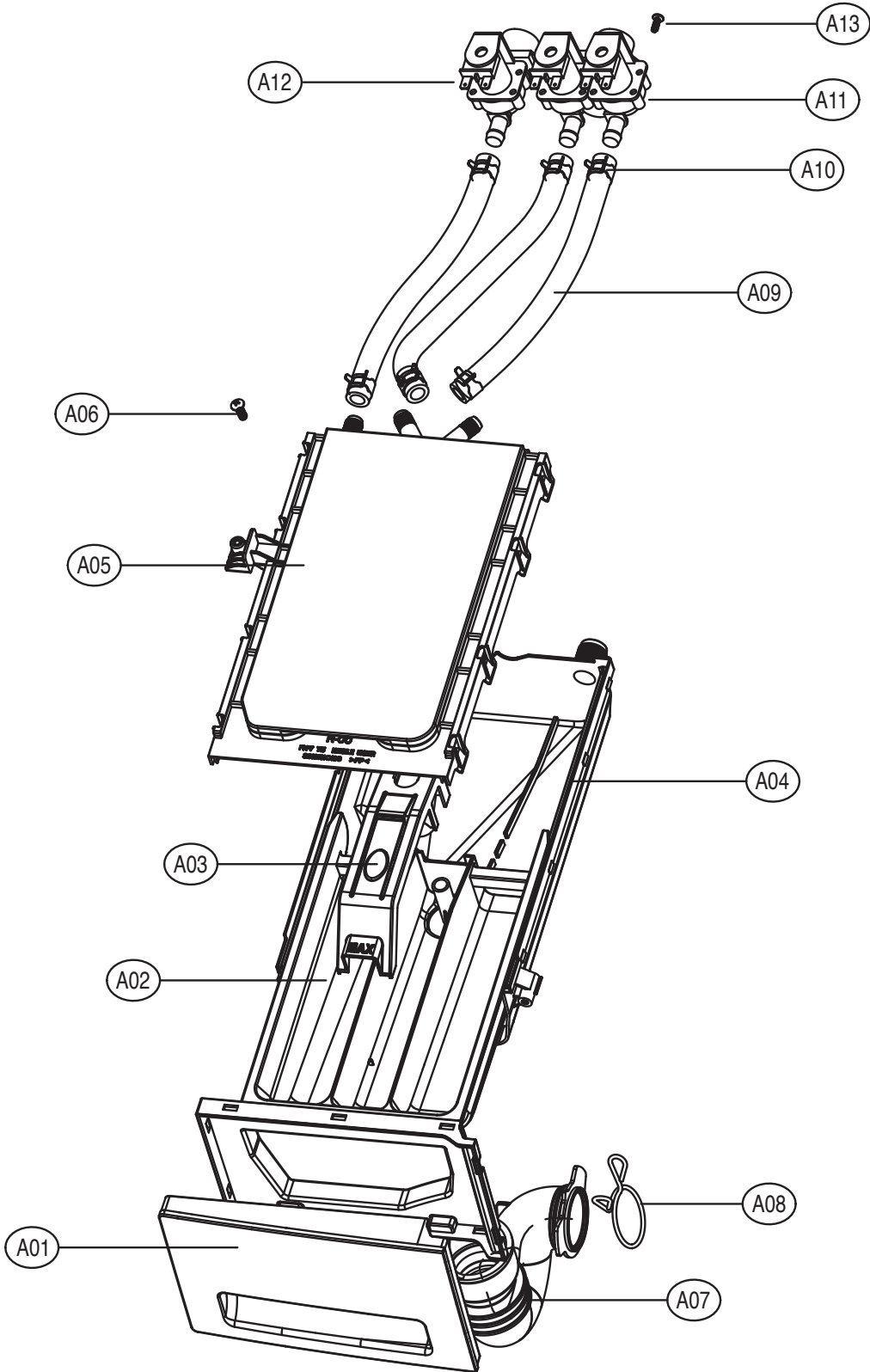
5. EXPLODE VIEW AND PARTS LIST

■ INLET BOX AS (DD MOTOR TYPE)



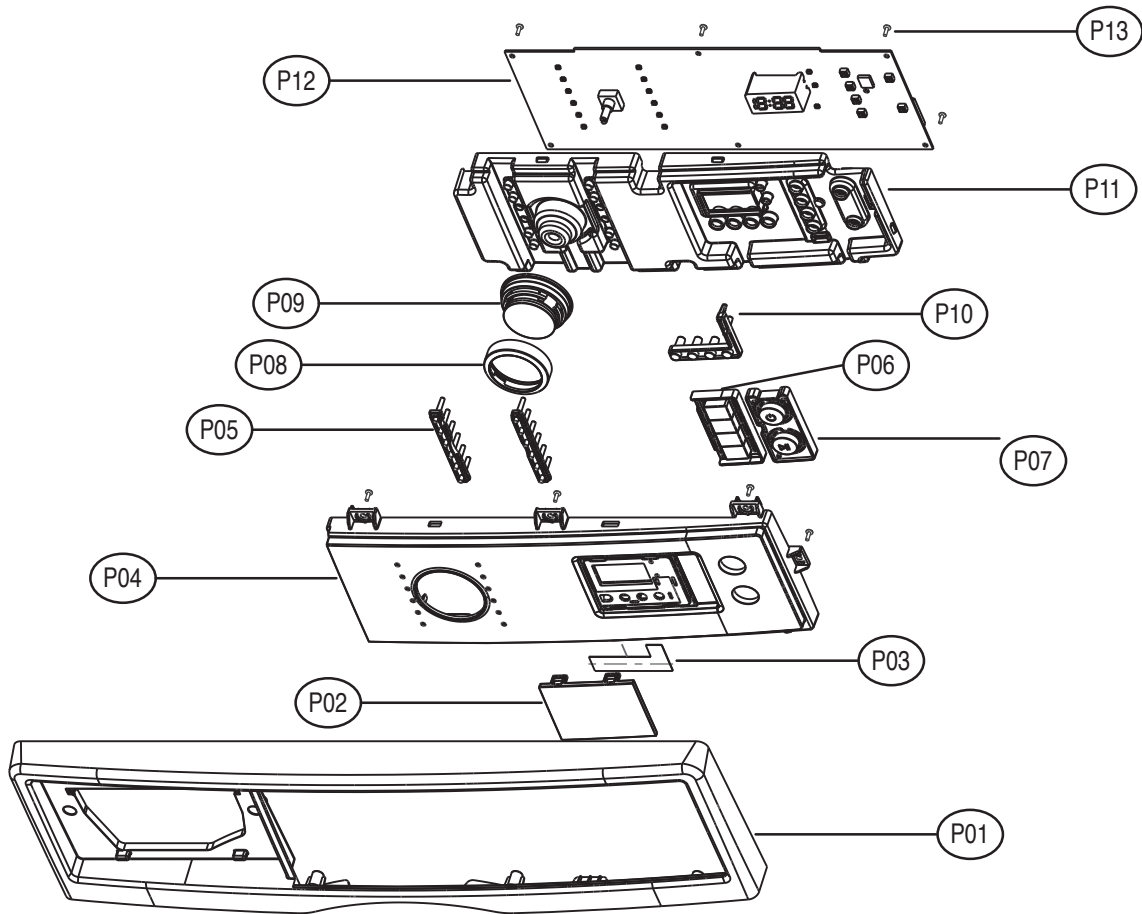
NO.	PART NAME	PART CODE	SPECIFICATION	Q'TY	REMARK
A01	CASE HANDLE	36110-0063300	HIPS, D-H'S	1	
A02	CASE DETERGENT	36110-0063400	PP, D-H'S	1	
A03	CAP SOFTENER	36109-0001800	PP	1	
A04	INLET BOX	36176-0000100	PP	1	
A05	NOZZLE AS	36183-0001001	NOZZLE AS DWD-800W, COLD ONLY	1	
A05-1	NOZZLE *T	36183-0000800	PP	1	
A05-2	NOZZLE *U	36183-0000901	PP	1	
A06	SCREW TAPPING	90007-0007400	T2S TRS 4X20 MFZN	1	
A07	CLAMP AS	36111-0000700	ID=60, WIRE+GUIDE+BOLT+NUT	1	
A08	HOSE INLET	36131-0004500	EPDM U-TRAP	1	
A09	CLAMP HOSE *I	36111-0000200	HSW3, D2.6, MFZN, ID=38	1	
A10	HOSE WATER SUPPLY	36131-0014801	EPDM, ID9.5, OD14.5, L=225	2(3)	COLD(+HOT)
A11	CLAMP HOSE	36111-0002400	100H, ID=13.8 W=10.0 0.9T	4(6)	COLD(+HOT)
A12	VALVE INLET AS	66150-0005200	220-240V 2-WAY PP/BRACKE	1	COLD
A13	VALVE INLET	66150-0005100	220-240V,50/60Hz, 1WAY	1	HOT
A14	SCREW TAPTITE	90007-0008900	TT3 TRS 4X8 MFZN	4	

■ INLET BOX AS (UNIVERSAL MOTOR TYPE)



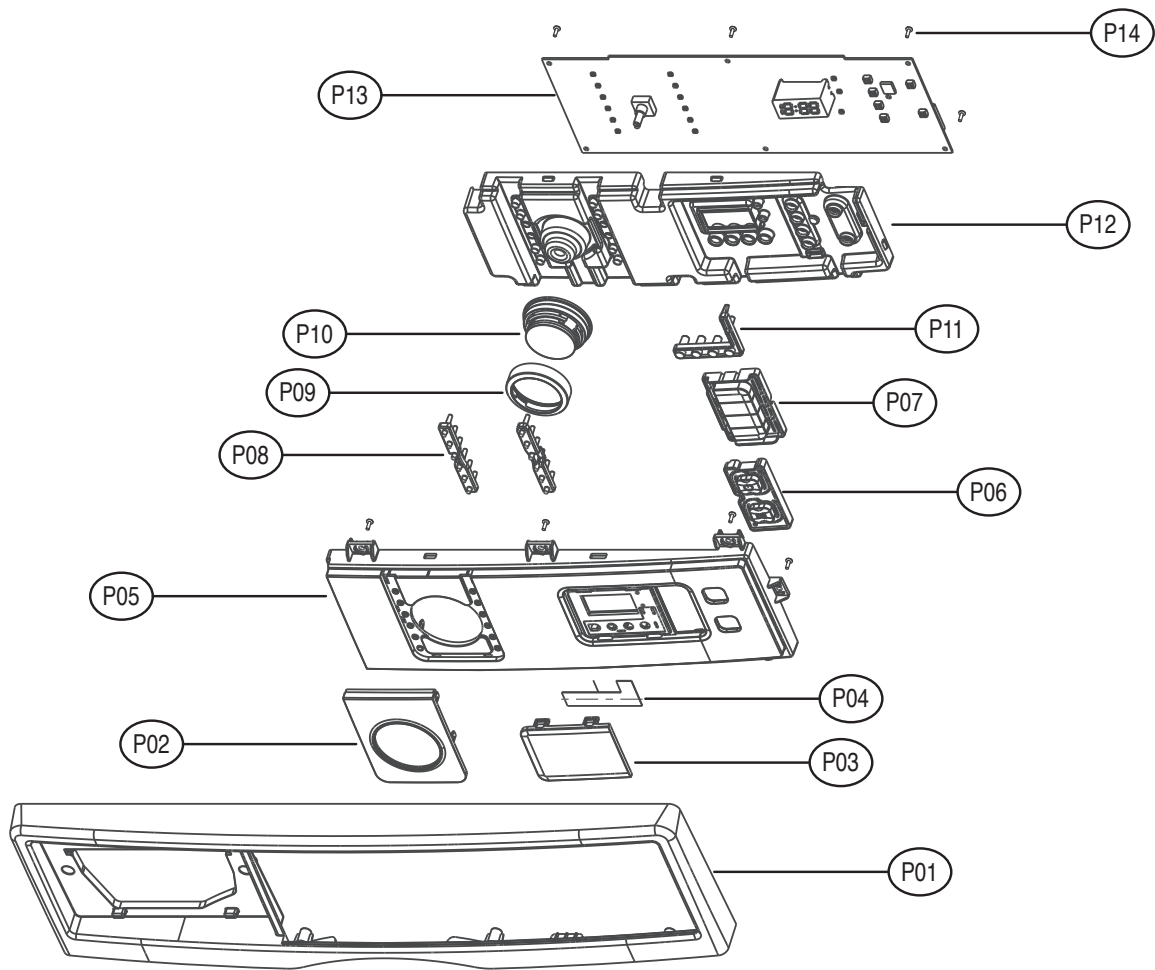
NO.	PART NAME	PART CODE	SPECIFICATION	Q'TY	REMARK
A01	CASE HANDLE	36110-0063301	HIPS, D-H'S	1	
A02	CASE DETERGENT	36110-0063400	PP, D-H'S	1	
A03	CAP SOFTENER	36109-0001800	PP	1	
A04	INLET BOX	36176-0002900	PP	1	
A05	NOZZLE AS	36183-0001001	NOZZLE AS DWD-800W, COLD ONLY	1	
A05-1	NOZZLE *T	36183-0000800	PP	1	
A05-2	NOZZLE *U	36183-0000901	PP	1	
A06	SCREW TAPPING	90007-0007400	T2S TRS 4x20 MFZN	1	
A07	HOSE INLET	36131-0009800	EPDM U-TRAP	1	
A08	CLAMP HOSE *I	36111-0000200	HSW3, D2.6, MFZN, ID=38	1	
A09	HOSE WATER SUPPLY	36131-0014801	EPDM, ID9.5, OD14.5, L=225	2(3)	COLD(+HOT)
A10	CLAMP HOSE	36111-0002400	100H, ID=13.8 W=10.0 0.9T	4(6)	COLD(+HOT)
A11	VALVE INLET AS	66150-0005200	220-240V 2-WAY PP/BRACKE	1	COLD
A12	VALVE INLET	66150-0005100	220-240V,50/60Hz, 1WAY	1	HOT
A13	SCREW TAPTITE	90007-0008900	TT3 TRS 4X8 MFZN	4	

■ PANEL FRONT AS(DWD-HC123**/HB143**/GN-123**)



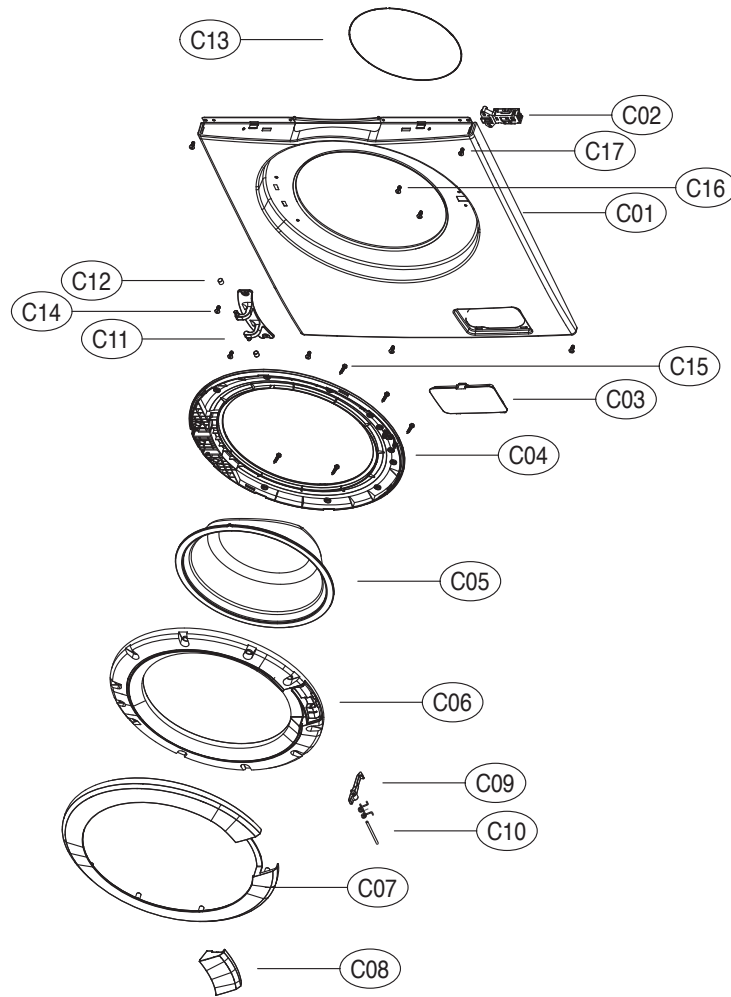
No.	PART NAME	PART CODE	SPECIFICATION	Q'TY	REMARK
P01	DECO PANEL *F	36115-0020301	ABS, HG0760/G62156/GY-349A, PERSIA	1	
P02	WINDOW DISPLAY	36151-0011100	ABS, LG/558A/8L720/GY9901AT, PERSIA 7kg, H3	1	
P03	DECORATOR FILM	36167-0070000	PE, T0.4X66.6X30.6, PERSIA, Both Tape	1	
P04	PANEL *F	36139-0056501	ABS, HG0760/G62156/GY349A, SPRAY, PRINT PERSIA, UNI, 7kg, H3	1	
P05	WINDOW COURSE LED	36151-0011200	ABS, TR558/8H323/GY-5503AT, PERSIA 7kg, H3	1	
P06	BUTTON OPTION	36159-0022300	ABS, HG0760/G62156/GY-349A, PERSIA 7kg, H3	1	
P07	BUTTON P.S	36159-0022201	ABS, HG0760/G62156/GY-349A, PERSIA, 7kg, H3	1	
P08	DECO KNOB DIAL	36115-0012401	ABS (GY-5104A) D-H2's	1	
P09	KNOB DIAL	36132-0010602	ABS, HG0760/G62156/GY-349A	1	
P10	WINDOW FUNCTION	36151-0011300	ABS, TR558/8H323/GY-5503AT, PERSIA, H3, H4	1	
P11	CASE PCB *F	36110-0063200	HIPS/HEP/F-744/1001/WHT/V0, PERSIA, H3, H4	1	
P12	PCB SET ASSY	40302-1073300	PERSIA UNI, EURO, 7K, 220V, 1200, C, BB, PP	1	
		40302-1084300	H3-H4,UNI,UAE,7K,220V,1200,C,BB,PP,CP	1	
P13	SCREW TAPPING	90007-0006600	T2S TRS 4X14 MFZN	6	

■ PANEL FRONT AS(DWD-HC124**/HB144**)



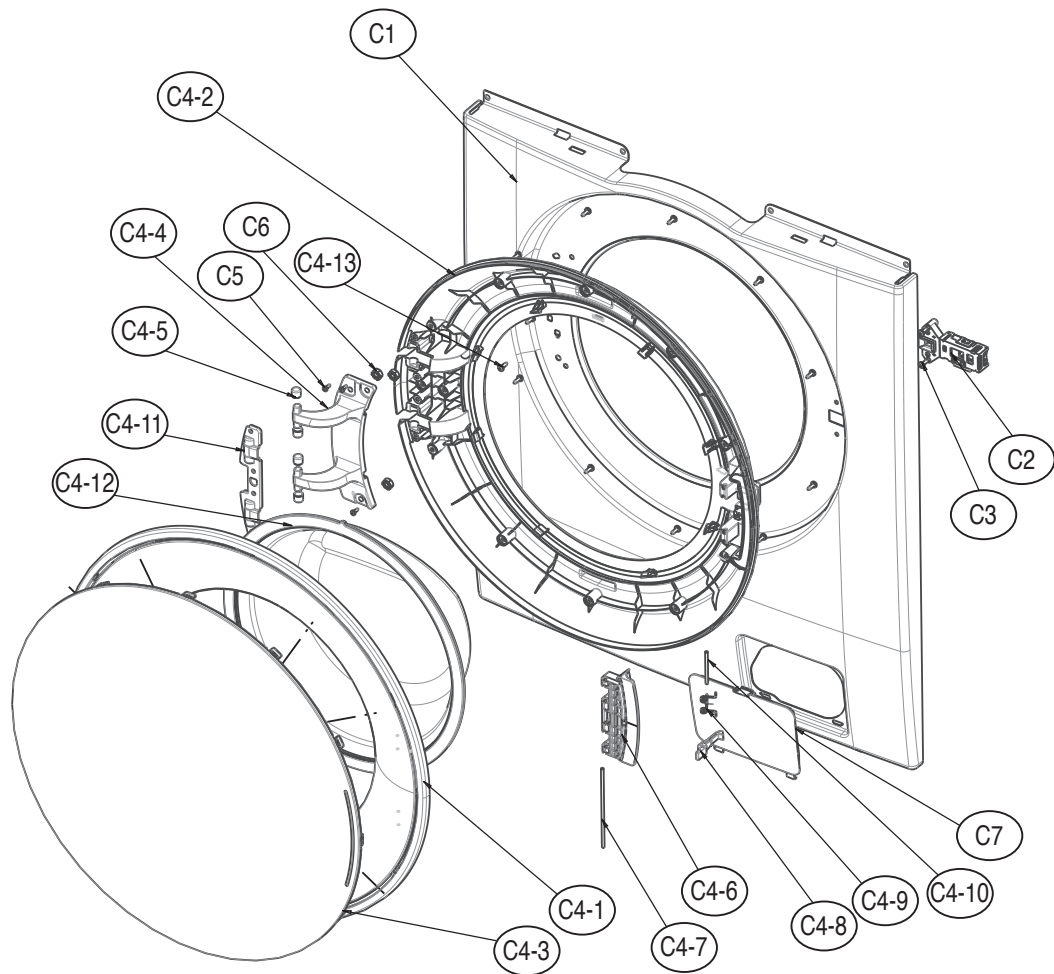
No.	PART NAME	PART CODE	SPECIFICATION	Q'TY	REMARK
P01	DECO PANEL *F	36115-0020300	ABS, HG0760/W94006/WH-1802A, PERSIA	1	
P02	WINDOW COURSE	36151-0011700	ABS, TR558A/8L720/GY-9901AT, PERSIA, 8kg, H4	1	
P03	WINDOW DISPLAY	36151-0011500	ABS, LG/558A/8L720/GY9901AT, PERSIA, 8kg, H4	1	
P04	DECORATOR FILM	36167-0070000	PE, T0.4X66.6X30.6, PERSIA, Both Tape	1	
P05	PANEL *F	36139-0056600	ABS, HG0760/W94006/WH-1802A, SILK PRINT, PERSIA, 8kg, H4	1	
P06	BUTTON P.S	36159-0022700	ABS, HG0760/W94006/WH-1802A, PERSIA, 8kg, H4	1	
P07	BUTTON OPTION	36159-0022800	ABS, HG0760/K2937/BK084A, PERSIA, 8kg, H4	1	
P08	WINDOW COURSE LED	36151-0011600	ABS, TR558/8H323/GY-5503AT, PERSIA, 8kg, H4	1	
P09	DECO KNOB DIAL	36115-0012400	ABS+AL, D-H2	1	
P10	KNOB DIAL	36132-0010600	ABS, HG0760/K2937/BK084A, PERSIA, H3,H4	1	
P11	WINDOW FUNCTION	36151-0011300	ABS, TR558/8H323/GY-5503AT, PERSIA, H3, H4	1	
P12	CASE PCB *F	36110-0063200	HIPS/HEP/F-744/1001/WHT/V0, PERSIA, H3,H4	1	
P13	PCB FRONT ASSY	40302-1074100	PERSIA DD FRONT,EURO,220V,1400,8K,C,N-CP	1	
P14	SCREW TAPPING	90007-0006600	T2S TRS 4X14 MFZN	12	

■ CABINET FRONT AS_1ST



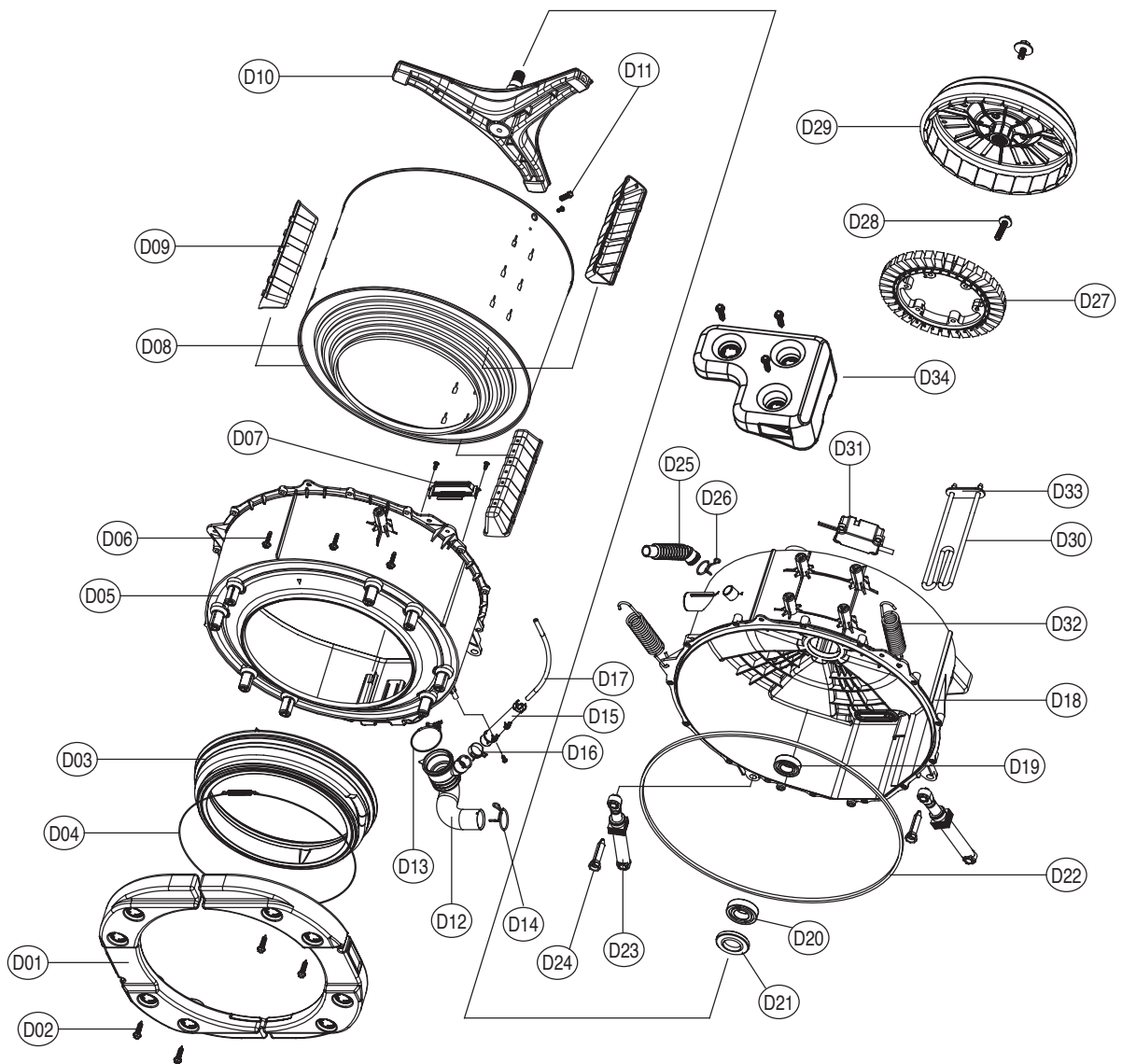
No.	PART NAME	PART CODE	SPECIFICATION	Q'TY	REMARK
C01	CABINET *F	36108-0004200	CABINET FRONT SUB BASE AS D-H'S CABINET F+BRACKET	1	
C02	SWITCH DOOR LOCK	66148-0001300	SWITCH DOOR LOCK CONCORE, KM, 3P/ 250V 16A BI-METAL	1	
C03	COVER PUMP	36113-0007004	ABS, HG0760/W94006/WH-1802A, PERSIA	1	
C04	FRAME DOOR *I	36121-0010201	PP, H's, FRAME DOOR *I	1	
C05	DOOR GLASS	36116-0018100	GLASS PI300, M,F	1	
C06	FRAME DOOR *O	36121-0010301	ABS, BK-084A, PERSIA PJT, H's 1st Door	1	
C07	DECO FRAME DOOR	36115-0009101	ABS, D-H'S,	1	
C08	HANDLE DOOR	36125-0003901	ABS, D-H'S	1	
C09	HOOK DOOR	36130-0001100	ZNDC, D-H'S	1	
C10	PIN HANDLE	36184-0000202	PIN HANDLE SUS304, D3, L53	1	
	SPRING HOOK	36145-0006400	SPRING HOOK D-H1	1	
C11	HINGE DOOR	36128-0001600	ALDC, D-H'S	1	
C12	CAP HINGE DOOR	36109-0001700	POM	2	
C13	CLAMP DOOR AS	36111-0002000	HSW3, D1.4, GS, M/F	1	
C14	SCREW TAPPING	90007-0002700	ZN-NI, F/L M/S(SE) 5*12	2	
C15	SCREW TAPPING	90007-0005100	T1S FLT 4*20 STS430 NATURAL	13	
C16	SCREW TAPPING	90007-0006400	T2S TRS 4X14 STS	2	
C17	SCREW TAPPING	90007-0006600	T2S TRS 4X14 MFZN	5	

■ CABINET FRONT AS_2ND



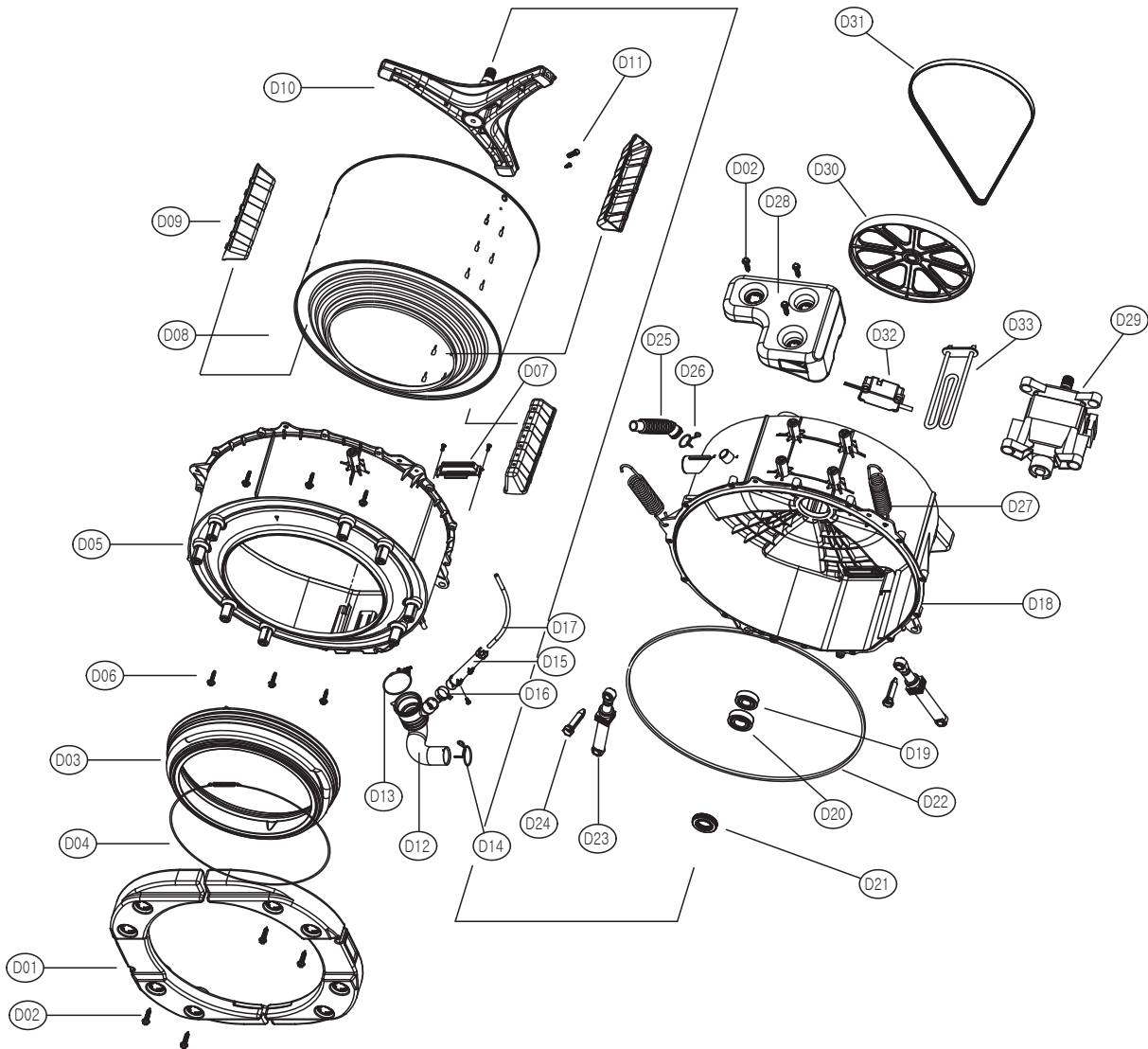
NO	PART NAME	CODE	SPECIFICATION	Q'TY	REMARK
C1	CABINET *F	36108-0004208	T0.7,H-3,H-4,BIG DOOR(D-H'S착탈)	1	
C2	SWITCH DOOR LOCK	66148-0001300	CONCORE,KM,3P/250V 16A BI-METAL	1	
C3	SCREW TAPPING	90007-0006400	T2S TRS 4X14 MFZN,SUS	2	
C4	DOOR AS	36116-0034500	BIG DOOR_BLACK	1	
C4-1	FRAME DOOR *O	36121-0021500	489.6 x 50.5	1	
C4-2	FRAME DOOR *I	36121-0021600	489.4 x 50.4	1	
C4-3	PROTECTOR GLASS	36185-0005600	469.4 x 30.1	1	
C4-4	HINGE DOOR P	36128-0003200	45.9 x 113.3	1	
C4-5	CAP HINGE	36109-0009700	10 x 8.5	4	
C4-6	HANDLE DOOR	36125-0009500	BIG DOOR_	1	
C4-7	PIN HANDLE	36184-0000900	D=3.0 L=106	1	
C4-8	HOOK DOOR	36130-0003300	15 x 43.5	1	
C4-9	SPRING HOOK	36145-0006400	D-H1	1	
C4-10	HOOK SHAFT	36130-0000500	D=3.0 L=43 TEMPERING	1	
C4-11	HINGE BRACKET P	36128-0003400	T1.2 X 175.0 X 38	1	
C4-12	DOOR GLASS	36116-0032300	PI 361 EURASIA	1	
C4-13	SCREW TAPPING	90007-0006400	T2S TRS 4X14 MFZN,SUS	16	
C5	SCREW TAPPING	90007-0002700	F/L M/S(SE) 5*12	3	
C6	NUT HEX	90003-0001700	F/L M/S(SE) 5*12	3	
C7	COVER PUMP	36113-0007001	ABS	1	

■ TUB ASS'Y (DD TYPE)



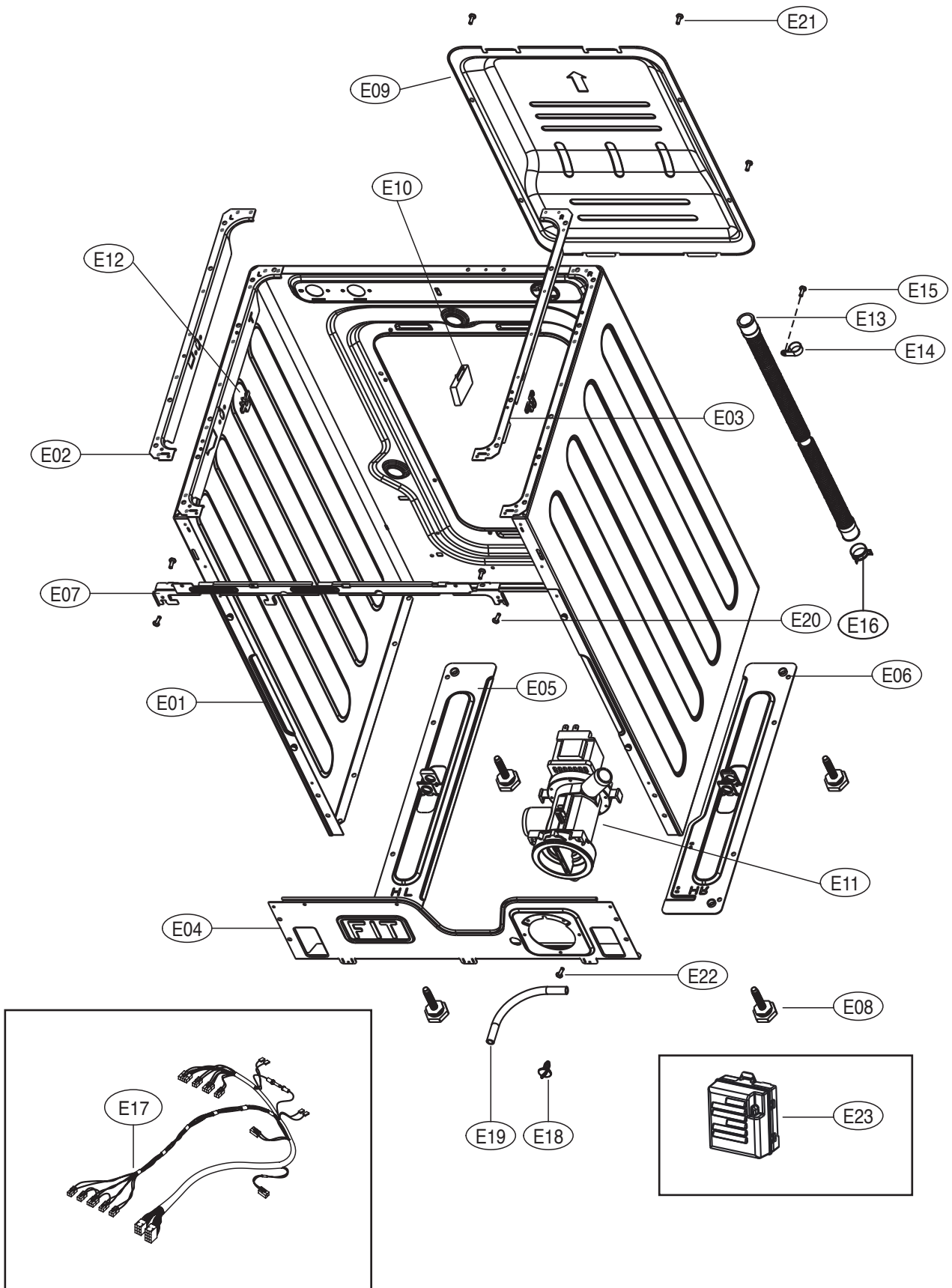
No.	PART NAME	PART CODE	SPECIFICATION	Q'TY	REMARK
D01	BALANCER WEIGHT AS	36154-0001702	BALANCER WEIGHT F L/R D-FB,FC'S 6.5KG	2	
D02	SPECIAL SCREW	36198-0002900	SPECIAL SCREW SWCH 8.5X30	11	
D03	GASKET	36123-0001300	GASKET EPDM	1	
D04	CLAMP GASKET AS	36111-0001801	CLAMP GASKET AS HSW3, F'S WIRE L1060	1	
D05	TUB *F	36196-0002501	TUB *F FRPP FH7304GM	1	
D06	SPECIAL SCREW	36198-0003200	SPECIAL SCREW SWCH 6.5X30	14	
D07	FIXTURE HEATER	36119-0000701	FIXTURE HEATER SUS 304 0.7T 440X45	1	
D08	DRUM SUB AS	36170-0003802	STAR DRUM, CENTER GS, PERSIA	1	
D09	LIFTER WASH	36179-0000502	LIFTER WASH PP D-F'S NANO	3	
D10	SPIDER AS	36190-0000403	SPIDER AS 1400RPM, SERRATION	1	
D11	SPECIAL SCREW	36198-0003000	STS 430 8X25	3	
D12	HOSE DRAIN	36131-0004600	HOSE DRAIN EPDM	1	
D13	CLAMP AS	36111-0000701	CLAMP AS ID=61, WIRE+GUIDE+BOLT, GS	1	
D14	CLAMP HOSE *1	36111-0000200	CLAMP HOSE *1 HSW3, D2.6, MFZN D38	1	
D15	AIR TRAP	36152-0000700	AIR TRAP PP	1	
D16	CLAMP HOSE	36111-0001901	CLAMP HOSE DI=26	1	
D17	HOSE AIR	36131-0005100	HOSE AIR ID=4,OD=8, L=580	1	
D18	TUB *R	36196-0002601	TUB REAR FRPP FH7304GM D-FD	1	
D19	BEARING *O	36155-0000400	BEARING OUTER F,L,E,U,6205ZZ	1	
D20	BEARING *I	36155-0000300	BEARING INNER F,L,E,U,6206ZZ	1	
D21	SEAL WATER	36189-0000800	WATER SEAL NBR	1	
D22	GASKET TUB	36123-0001500	GASKET TUB EPDM L1600	1	
D23	DAMPER FRICTION	36166-0000302	120N CIMA ST=170-260 DL=197.5 LOW NOISE	2	
D24	DAMPER PIN	36166-0000400	DAMPER PIN AKS D=14.5	2	
D25	HOSE VENT	36131-0004400	HOSE VENT EPDM	1	
D26	CLAMP HOSE	36111-0001901	CLAMP HOSE DI=26	1	
D27	MOTOR BLDC STATOR	66182-0003608	AL,DON1000W 18T 36POLE,NMT,PBT CLASS B,L/W	1	
D28	SPECIAL BOLT AS	36198-0003301	(STATOR) SWCH M8+SILOCK,35MM,DONGSEO	6	
D29	MOTOR BLDC ROTOR	66182-0003702	UNIT ROTOR BLDC DON1000W SR-FERRITE12,18T,NMT	1	
D30	HEATER WASH	66127-0001304	230V 2000W DHDH-600XY INCOLOY800 FUSE 2EA SAUDI	1	
D31	UNIT BUBBLE PUMP AS	66149-0006801	220-240V DBK-240DB RP CHSHION	1	
D32	SPRING SUSPENSION	36145-0002800	D6K FU,D=3.2 L=158,K=0.554 SILVER COATING	2	
D33	THERMISTOR WASH	66194-0000100	UL. R25=11.981K R80=1.704K	1	
D34	BALANCER *T	36154-0004800	PP, D-FB'S NEW 4KG	1	

■ TUB ASS'Y (UNIVERSAL TYPE)



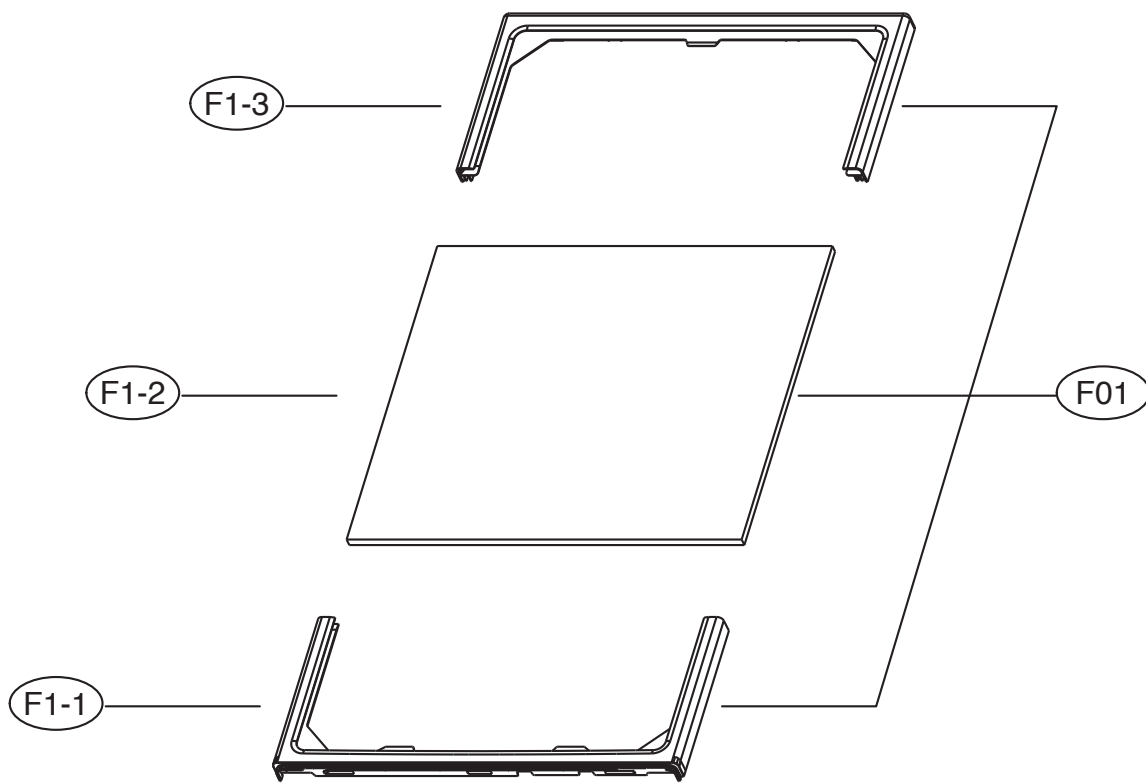
No.	PART NAME	PART CODE	SPECIFICATION	Q'TY	REMARK
D01	BALANCER WEIGHT AS	36154-0001702	BALANCER WEIGHT F L/R D-FB,FC'S 6.5KG	2	
D02	SPECIAL SCREW	36198-0002900	SPECIAL SCREW SWCH 8.5X30	11	
D03	GASKET	36123-0004700	GASKET EPDM, FT1081	1	
D04	CLAMP GASKET AS	36111-0001801	CLAMP GASKET AS HSW3, F'S WIRE L1060	1	
D05	TUB *F	36196-0004100	TUB *F FRPP, FT1081	1	
D06	SPECIAL SCREW	36198-0005300	SPECIAL SCREW SWRCH18A 5.6*30	12	
D07	FIXTURE HEATER	36119-0000701	FIXTURE HEATER SUS 304 0.7T 440X45	1	
D08	DRUM SUB AS	36170-0003802	STAR DRUM, CENTER GS, PERSIA	1	
D09	LIFTER WASH	36179-0000502	LIFTER WASH PP D-F'S NANO	3	
D10	SPIDER AS	36190-0001200	SPIDER AS D-FT1081	1	
D11	SPECIAL SCREW	36198-0003000	STS 430 8X25	3	
D12	HOSE DRAIN	36131-0004600	HOSE DRAIN EPDM	1	
D13	CLAMP AS	36111-0000701	CLAMP AS ID=61, WIRE+GUIDE+BOLT, GS	1	
D14	CLAMP HOSE	36111-0000202	CLAMP HOSE HSW3,YW,D2.6,ID36,W44.5, L35	1	
D15	AIR TRAP	36152-0000700	AIR TRAP PP	1	
D16	CLAMP HOSE	36111-0001901	CLAMP HOSE DI=26	1	
D17	HOSE AIR	36131-0005100	HOSE AIR ID=4,OD=8, L=580	1	
D18	TUB *R	36196-0004200	TUB REAR FRPP, FT1081	1	
D19	BEARING *O	36155-0000400	BEARING OUTER F,L,E,U,6205ZZ	1	
D20	BEARING *I	36155-0000300	BEARING INNER F,L,E,U,6206ZZ	1	
D21	SEAL WATER	36189-0000800	WATER SEAL NBR	1	
D22	GASKET TUB	36123-0001500	GASKET TUB EPDM L1600	1	
D23	DAMPER FRICTION	36166-0000302	120N CIMA ST=170-260 DL=197.5 LOW NOISE	2	
D24	DAMPER PIN	36166-0000400	DAMPER PIN AKS D=14.5	2	
D25	HOSE VENT	36131-0004400	HOSE VENT EPDM	1	
D26	CLAMP HOSE	36111-0001901	CLAMP HOSE DI=26	1	
D27	SPRING SUSPENSION	36145-0002800	D6K FU,D=3.2 L=158,K=0.554 SILVER COATING	1	
D28	BALANCER WEIGHT *T AS	36154-0005400	BALANCER WEIGHT *T PP , D-FC'S , 6KG	1	
D29	MOTOR UNIVERSAL	66182-0003206	TONLON 240VDC 2P PI340 PERSIA DUM66-45P	1	
D30	PULLEY	36186-0001200	PULLEY ALDC, D-FU	1	
D31	BELT V	36157-0000200	BELT V FU/4PJ1120/BUTADIENE/ GATES	1	
D32	UNIT BUBBLE PUMP AS	66149-0006801	220-240V DBK-240DB RP CHSHION	1	
D33	HEATER WASH	66127-0001304	230V 2000W DHDH-600XY INCOLOY800 FUSE 2EA SAUDI	1	

■ CABINET AS



No.	PART NAME	PART CODE	SPECIFICATION	Q'TY	REMARK
E01	CABINET	36108-0000909	PCM, WH-1802C, 0.7*825.7*1630.8, PERSIA, NON-VYNYL, DD	1	
E02	FRAME *T *L	36121-0009301	FRAME TOP *L FT, SGCC 1.2T, G/S	1	
E03	FRAME *T *R	36121-0009401	FRAME TOP *R SGCC 1.2T, FT1081, G/S	1	
E04	FRAME LOWER	36121-0010100	D-HT'S, SGCC 1.0T, G/S	1	
E05	BASE *U *L	36103-0004400	BASE UNDER *L D-HT'S, SGCC 1.6T, G/S	1	
E06	BASE *U *R	36103-0004500	BASE UNDER *R D-HT'S, SGCC 1.6T, G/S	1	
E07	FRAME UPPER	36121-0020500	SGCC, T1.2X627.0X72.0(P), PERSIA, PRO/CAM	1	
E08	LEG ADJUST AS	36178-0001900	SWCH10A 26x8.7 + BUTYL FOOT 35mm	4	
E09	COVER *B AS	36113-0030500	COVER *B + CUSHION, PERSIA	1	
E10	UNIT EMI FILTER AS	66149-0000611	K25-6 RUIKAI EURASIA 7mH, 0.47uF, 2200pF 471D, 430k	1	
E11	UNIT DRAIN PUMP AS	66149-0007601	AL.220-240/50 B20-6, BPX2-15L 6KG	1	
E12	STOPPER SPRING	36146-0000200	POM, DWD-100DR	2	
E13	HOSE DRAIN *O	36131-0008909	D-F'S, DWD-90WNB L1980	1	
E14	CLAMP HOSE	36111-0003001	CLAMP HOSE NYLON, DA-16N, ID21.9 D-MU80	1	
E15	SCREW TAPPING	90007-0006400	T2S TRS 4X14 STS	1	
E16	CLAMP HOSE	36111-0001901	DI=26	1	
E17	HARNESS AS	66126-0040101	Single PUMP, BUBBLE, EMI , UNIVERSAL Washer	1	
E18	CAP WATER REMAIN	36109-0002000	PP	1	
E19	HOSE WATER REMAIN	36131-0005200	EPDM, ID=8.5, L200	1	
E20	SCREW TAPPING	90007-0006600	T2S TRS 4X14 MFZN	4	
E21	SCREW TAPPING	90007-0006600	T2S TRS 4X14 MFZN	4	
E22	SCREW TAPPING	90007-0006600	T2S TRS 4X14 MFZN	3	
E23	WM PCB INVERTER ASSY	40302-1082100	PERSIA, INV PCB AS, 220V	1	

■ PLATE T AS



No.	PART NAME	PART CODE	SPECIFICATION	Q'TY	REMARK
F01	PLATE *T AS	36141-0005808	PERSIA PJT	1	
F1-1	FRAME PLATE *F	36121-0020401	ABS, HG0760/G62156/GY-349A	1	
F1-2	PLATE *T	36141-0003101	PLATE *T MFC, SILVER 12TX577X504	1	
F1-3	FRAME PLATE *R	36121-0001201	ABS SPRAY	1	