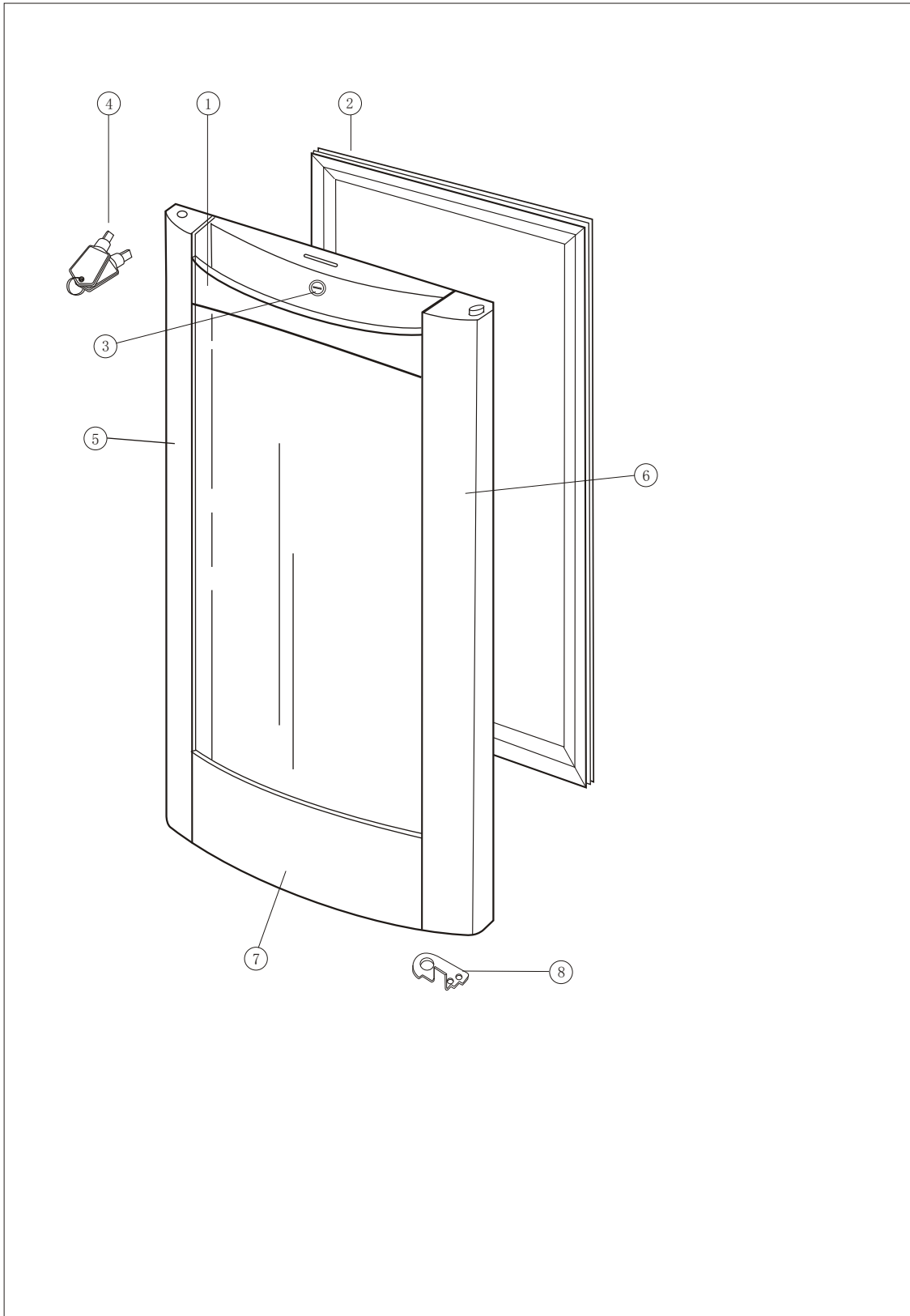

9. EXPLODED VIEW AND PARTS LIST

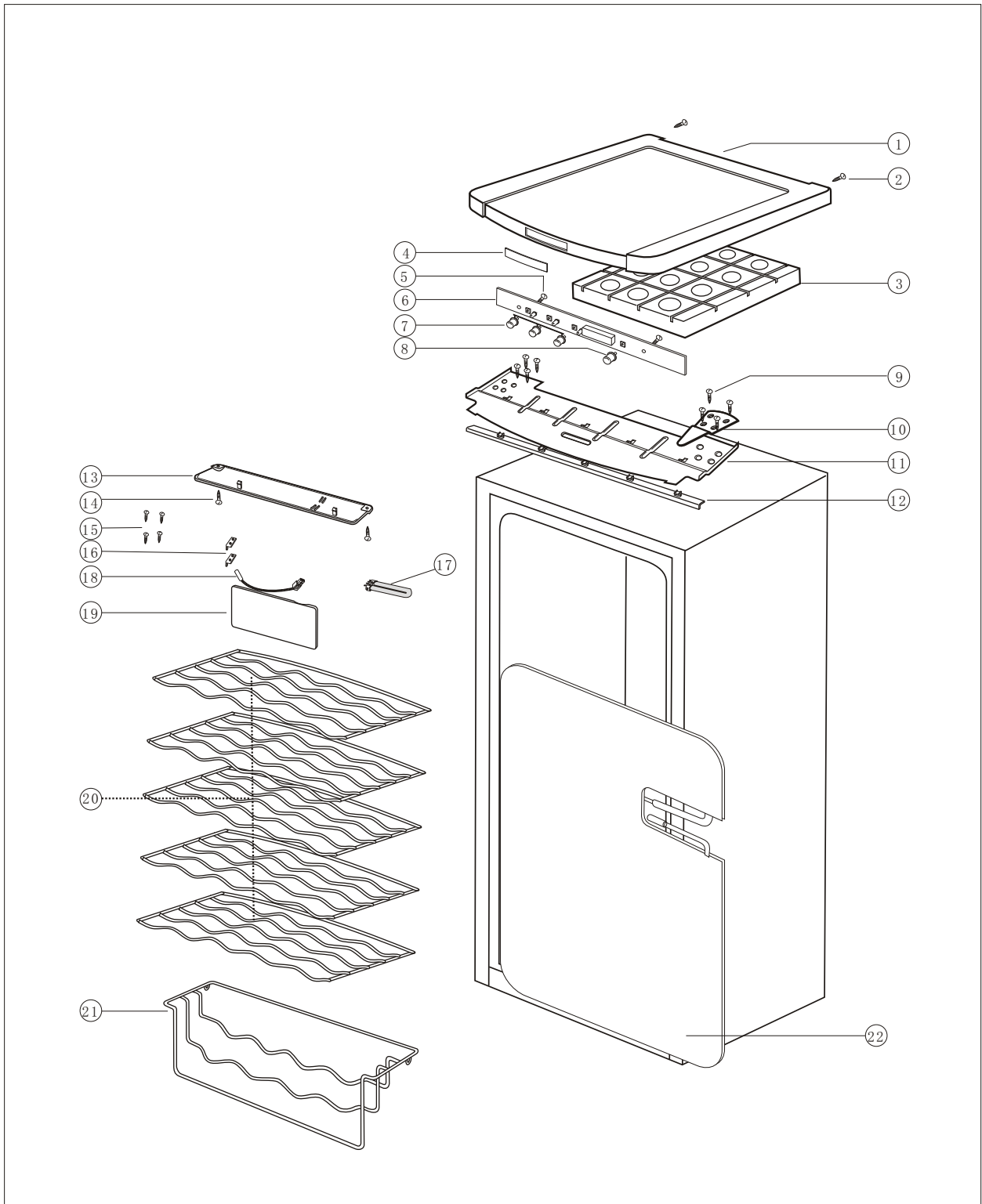
9-1. DOOR PARTS



9-1-1. PARTS LIST

| REF NO | PART NUMBER | DESCRIPTION | Q'ty | SPEC | REMARK |
|--------|-------------|---------------------|------|----------------------------------|----------|
| 1 | DA64-00368B | HANDLE | 1 | WINE CH/GE, NCFC-ABS, -, -, -, - | |
| 2 | DA63-01257B | GASKET DOOR | 1 | JC-125, SOFT-PVC, -, 482.6 | |
| 3 | DA97-00418A | ASSY-LOCK | 1 | JC-125, ZNDC2, 1CR18NI9TI, - | |
| 4 | DA64-00400B | KEY-ASSY | 1 | SMR04, -, -, -, -, -, GE | |
| 5 | DA64-00502E | CHASSIS-SIDE, LEFT | 1 | NCFC-ABS | RW13EBBB |
| | DA64-00502D | CHASSIS-SIDE, LEFT | 1 | NCFC-ABS | RW13EBSS |
| 6 | DA64-00503B | CHASSIS-SIDE, RIGHT | 1 | WINE CH/GE, NCFC- | RW13EBBB |
| | DA64-00503D | CHASSIS-SIDE, RIGHT | 1 | NCFC-AB | RW13EBSS |
| 7 | DA67-00605B | CAP DOOR | 1 | WINE CH/GE, NCFC-ABS, -, -, -, - | |
| 8 | DA71-40133A | STOPPER-DOOR, C | 1 | SCP1, T2.0, ZPC3(W) | |

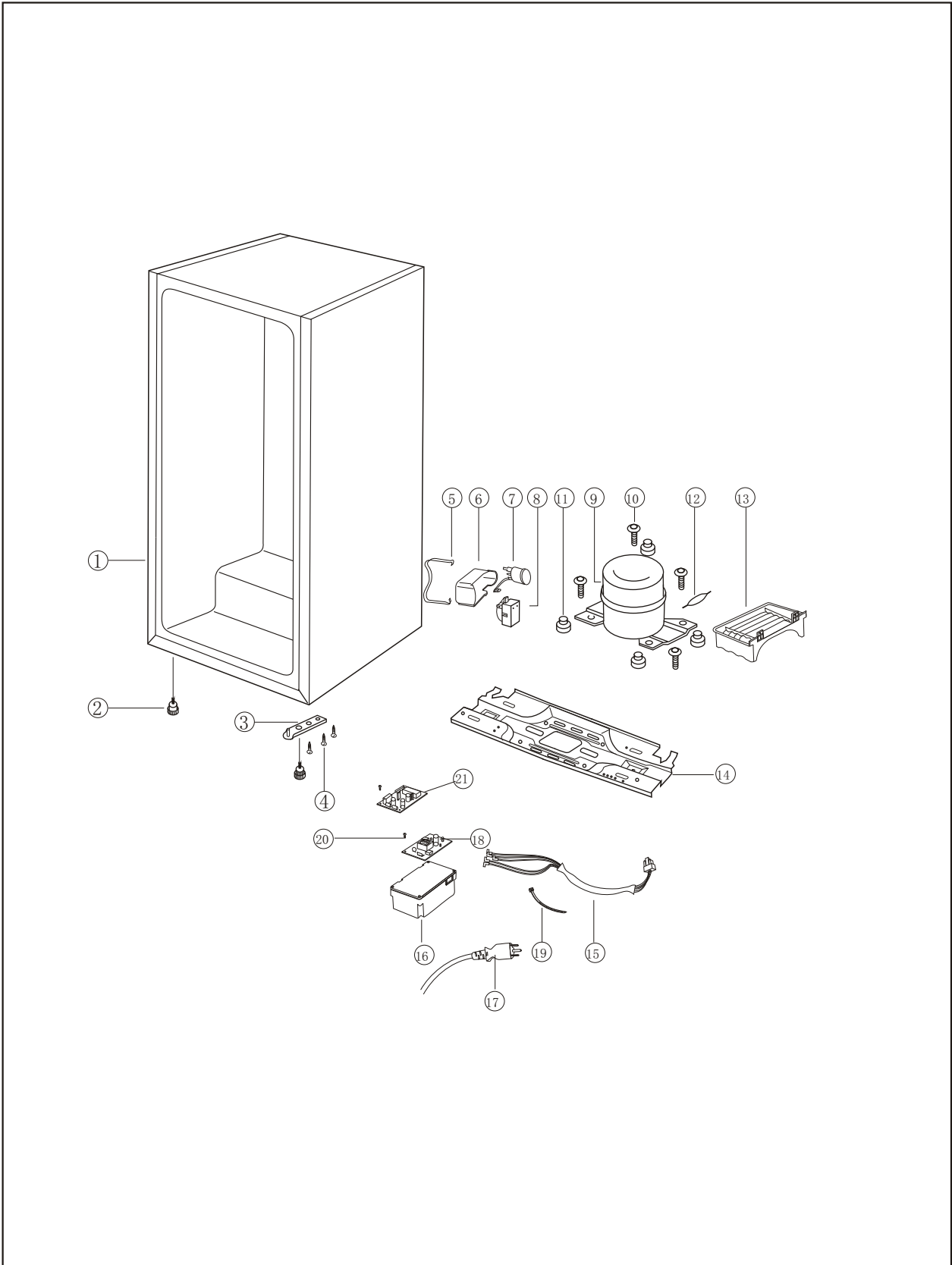
9-2. REF PARTS



9-2-1. PARTS LIST

| REF NO | PART NUMBER | DESCRIPTION | Q'ty | SPEC | REMARK |
|--------|-------------|---------------------|------|-----------------------------------|--------|
| 1 | DA64-00506B | TOP TABLE | 1 | RW13EBBB, ABS, BLACK, SAMSUN | |
| 2 | 6002-001106 | SCREW-TAPPING | 2 | TH, +, SJ2823-87, M3. 5, L | |
| 3 | DA62-00134A | INS ASSY-TOP##TABLE | 1 | JC-125, EPS, T23, | |
| 4 | DA64-00508C | INLAY-TOP TABLE | 1 | RW13EBBB, PC, T0. 45, W | |
| 5 | DA60-10130B | SCREW-TAP, TH | 2 | 1-4. 2X13, FE, FZY(1018) | |
| 6 | DA41-00124D | PCB-PANEL | 1 | RW13EBBB, 230/50, -, -, -, -, - | |
| 7 | DA64-00518A | BUTTON-L | 1 | JC-125, ABS, -, -, -, - | |
| 8 | DA64-00507A | BUTTON | 1 | JC-125, ABS, -, -, -, - | |
| 9 | DA60-10124A | SCREW-TAP TITE | 8 | ZPC2-Y 6X16 SR-53EA | |
| 10 | DA61-00447A | HINGE-UPP | 1 | JC-125, SCP1, -, -, -, -, - | |
| 11 | DA61-00445A | REINF-TOP TABLE | 1 | JC-125, SCP1, -, -, -, - | |
| 12 | DA61-00456A | GUIDE-TOP##TABLE | 1 | JC-125, ABS, T1. 5, - | |
| 13 | DA63-01045B | COVER-LAMP | 1 | WINE-CH/GE, PC, -, -, -, -, GE | |
| 14 | DA60-10130G | SCREW-TAPPING | 2 | TH 1-M4. 2*9. 5 ZN 35# | |
| 15 | DA61-00650A | FIXER-SCREW, TAPING | 4 | JC-125, ST3. 5, L13 | |
| 16 | DA47-00091A | LAMP HOLDER-CLAMP | 2 | -, -, -, -, PBT, UNFLA | |
| 17 | DA47-00100B | LAMP-FLUORESCENT | 1 | 6400K, HAITUO, JC-12 | |
| 18 | DA32-00002E | SENSOR | 1 | -, WINE CH, -, -, -, -, 502AT ADD | |
| 19 | DA63-01030A | COVER EVAP | 1 | JC-125, HIPS, T2, W73, L176, | |
| 20 | DA67-00481B | SHELF WIRE-UPP | 5 | JC-125, Q1008(Q195), 0 | |
| 21 | DA67-00480B | SHELF WIRE-LOW | 1 | JC-125, Q1008(Q195), 0 | |
| 22 | DA96-00019A | ASSY EVAP SUCT | 1 | WINE CH/GE, AL-PLATE, | |

9-3. ASS'Y CABINET PARTS



9-3-1. PARTS LIST

| REF NO | PART NUMBER | DESCRIPTION | Q'ty | SPEC | REMARK |
|--------|--------------|--------------------|------|----------------------------------|--------|
| 1 | DA70-00156B | CABI FRAME | 1 | PCM, -, SRG-148, -, -, DANBY& | |
| 2 | DA61-00912A | FOOT | 2 | WINE CH/GE, NBR, -, -, -, -, - | |
| 3 | DA61-00023C | HINGE-LOW | 1 | SRG-148, SCP1, T3. 5, -, -, SPR | |
| 4 | DA60-10130G | SCREW-TAPPING | 3 | TH 1-M4. 2*9. 5 ZN 35# | |
| 5 | DA65-20113A | CLAMP-RELAY COVER | 1 | SK-5 | |
| 6 | DA63-10722A | COVER-RELAY | 1 | P. P V451 | |
| 7 | DA34-10003Q | PROTECTOR-O/L | 1 | 4TM166SFBYY-53 | |
| 8 | DA35-10013D | PTC-RELAY | 1 | J531Q35E470M355-2 | |
| 9 | D130QL1Z/SJ2 | COMPRESSOR | 1 | 3. 04cc, RSIR, 220/240 | |
| 10 | DA60-20008A | BOLT-HEX, COMP | 4 | SM30C L42. 6 | |
| 11 | DA63-40234C | GROMMET-COMP | 4 | NBR H27. 8 | |
| 12 | DA73-30104G | DRYER | 1 | CU OD18. 85 L100 2P | |
| 13 | DA66-00134A | TRAY DRAIN-WATER | 1 | WINE CH, PP, -, -, -, N | |
| 14 | DA71-00126B | CHASSIS-COMP | 1 | SBHG1, TAX4, GE ROUND CO | |
| 15 | DA39-00223B | HARNESS RELAY-WIRE | 1 | RW13EBBB, -, UL101 | |
| 16 | DA61-00446B | CASE JUNCTION | 1 | WINE CH/GE, PP (5VA), -, | |
| 17 | DA39-10155B | POWER-CORD | 1 | 250V13A BS6500 BSI BS136 | |
| 18 | DA41-00123D | PCB MAIN | 1 | RW13EBBB, 230/50, -, -, -, -, -, | |
| 19 | 6501-000123 | CABLE-TIE | 1 | DACT-150, W4*L150, NYLON, NT | |
| 20 | 6002-001113 | SCREW-TAP, TH | 3 | 2*7 | |
| 21 | DA26-00011D | TRANS POWER-FORM | 1 | TIONG, JS-0500, -, -, | |